

# Exploded View

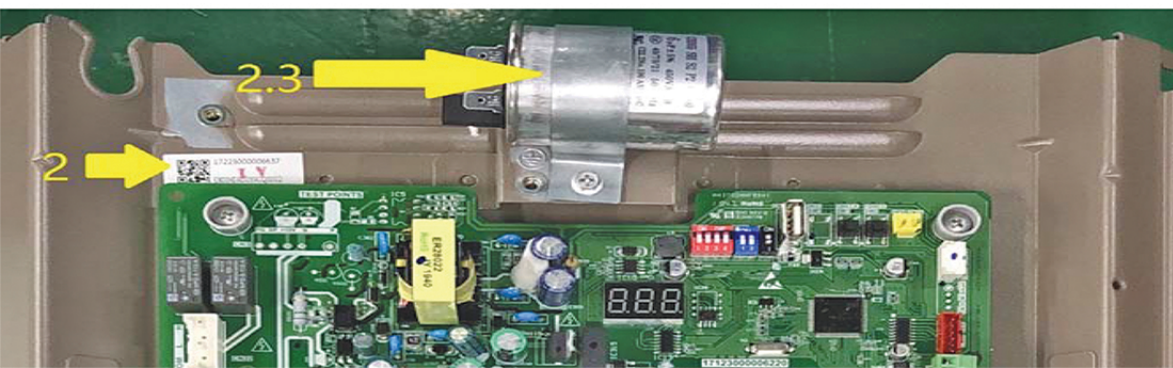
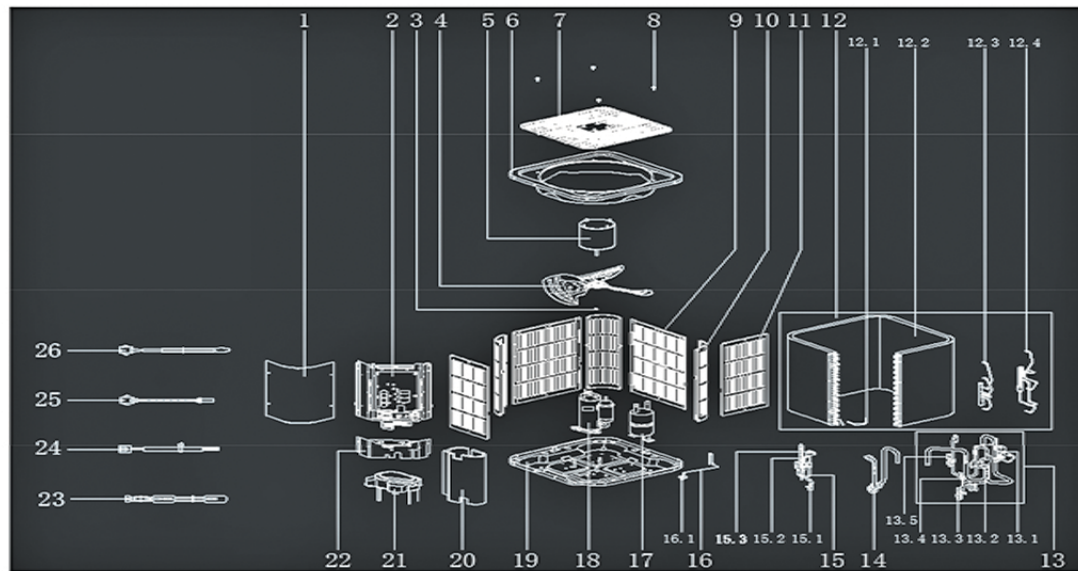
产品编码(Product model) :

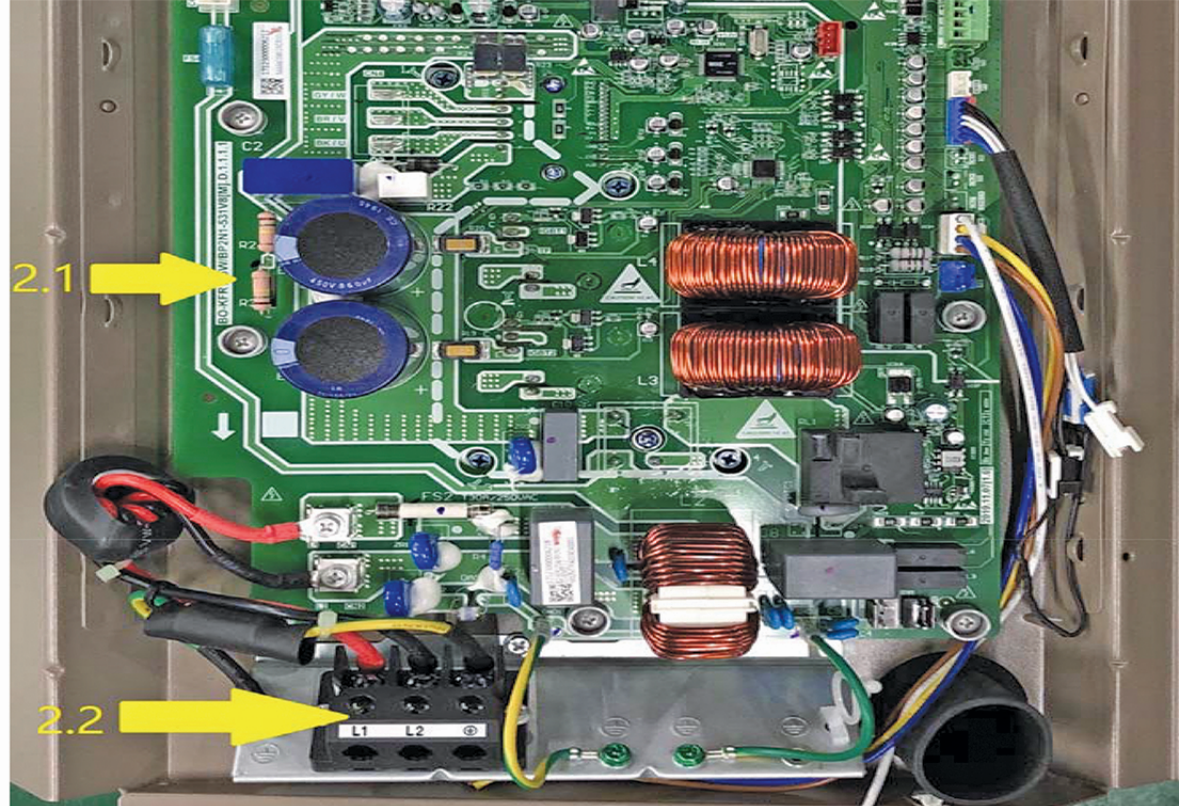
22023016002611

客户编码(Customer No) :

MOVB-36HDN1-M18M

客户型号(Customer model) :  
订单编码(Order Product Code) :





EX_ID	Spare Parts Code	Part Name(CN)	Part Name(EN)	Qty.	Remark2	Part Status	Drawing No	MIN_ORD ER_QTY	Long Term Material(Y or N)	High Rate of Replacemen t(Y or N)	SB Type	Replace Type	Remarks
1						Unknown							
2	17223000006637	室外机电控盒组件	E-part box assembly	1		In Use	BO-KFR105W/BP2N1-531V8[M].D.1	1					
2.1	17123000006217	模块板组件	Module board assembly	1		In Use	BO-KFR105W/BP2N1-531V8[M].D.1						
2.2	17400401003296	接线座	Wire joint	1		In Use	JXZ-PG3Z-90-A	1					
2.3	17400103000152	压机电容 RoHS 6uF/450V-P2(2000h)	Capacitor	1		In Use	6uF/450V-P2(2000h)			Y			
3	11301512000143	1型六角螺母	Nut	1		In Use	GBT6170						
4	12200104000038	抽流风叶	Fan	1		In Use	ZL-600*115*12.7-3N	1	N	Y			
5	11002012003819	单相异步电机	Motor	1		In Use	YKS-110-8-12		N	Y			
6	12223000003785	顶盖部件(SB3053)	Top cover ass'y	1		In Use	MAC-KF105W/N1-531V3.1	1					
7	12923000000032	顶盖网罩(SB3023)	Top cover veil	1		In Use	MAC-KF105W/N1-531V3.2	1					
8	11301002000074	六角头螺栓和弹垫圈及大垫圈组合件	Bolt and washer assembly	4		In Use	MJ16-00123						
9	12223000003979	侧板组件1(SB3053)	Side panel assembly	2		In Use	UL-KF105W/N1-531V3.3A	1					
10	12223000003961	支撑板(SB3053)	Supporting board	3		In Use	UL-KF53W/N1-411V3-1A	1					
11	12223000003986	侧板组件2(SB3053)	Side panel assembly	2		In Use	UL-KF105W/N1-531V3.4A	1					

