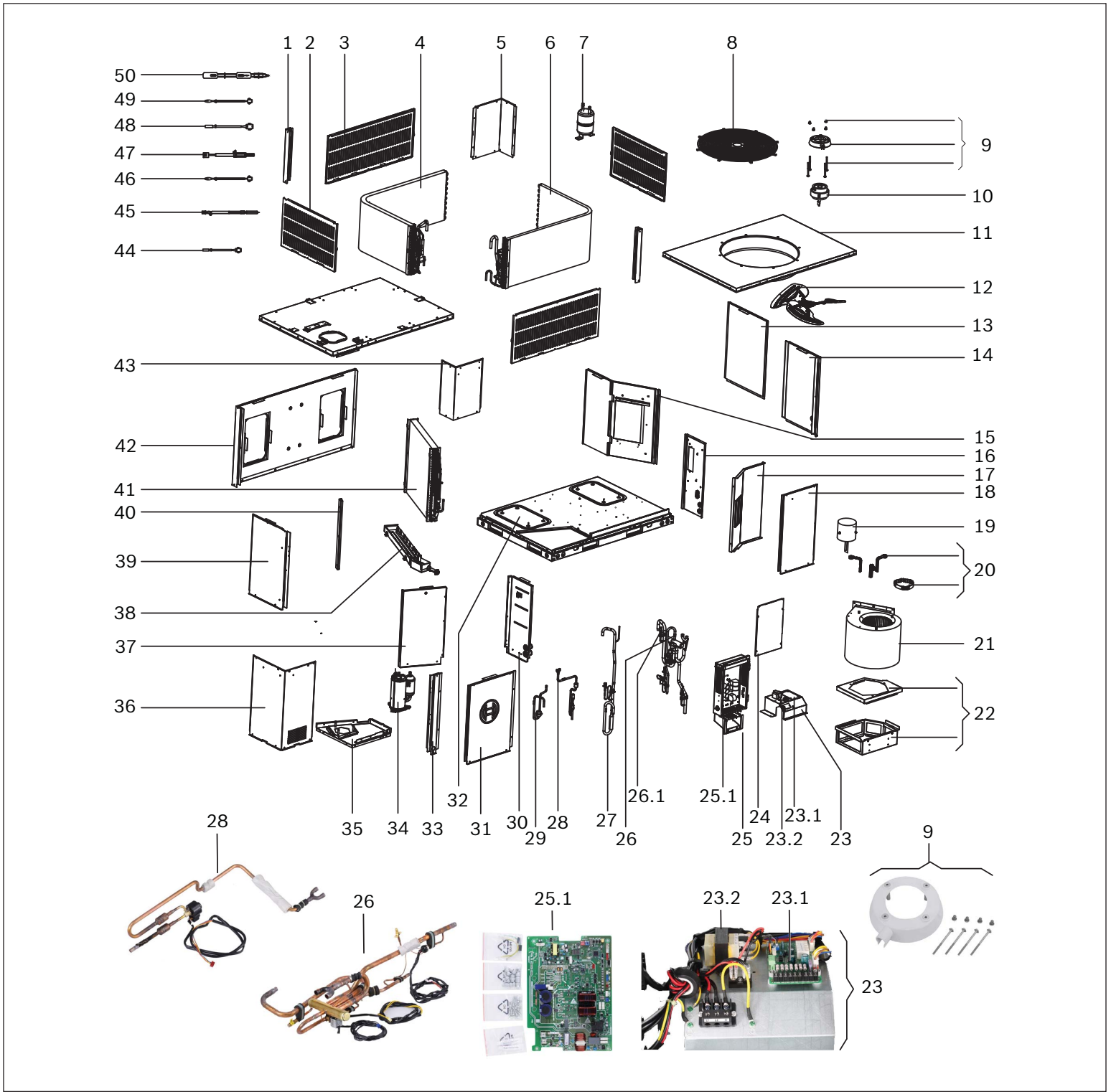


# Bosch IDP Packaged Heat Pump 3 Ton Capacity



**BOSCH**

Pos.	Description	Ordering no.	Recommended Stock	Remarks
1	Corner Post Panel 1	8733954653		
2	Louver Panel 1	8733954654		
3	Louver Panel 2	8733954655		
4	Front Condenser Coil Assembly	8733954656	✓	
5	Corner Post Panel 2	8733954657		
6	Back Condenser Coil Assembly	8733954658	✓	
7	Accumulator	8733954659	✓	
8	Outdoor Fan Guard	8733954660	✓	
9	ODU Motor mounting kit	8733954696	✓	
10	Outdoor ECM Motor	8733953312	✓	
11	Top Panel Assembly	8733954661		
12	Outdoor Fan Blade	8733941802		
13	Discharge Air Access Panel	8733954662		
14	High/Low Voltage Conduit Connection Panel	8733954663		
15	Discharge/Return Air Chamber Panel Assembly	8733954664		
16	Blower partition panel	8733954665		
17	Electric Heat Support Panel	8733954666		
18	High/Low Voltage Electrical Access Panel	8733954667		
19	Indoor Blower Motor	8733954668	✓	
20	IDU motor mounting kit	8733954697	✓	
21	Blower Assembly	8733954669	✓	
22	IDU motor support kit	8733954698	✓	
23	High/low Voltage Terminal Block Assembly	8733954672	✓	
23.1	Indoor control board	8733954673		
23.2	Transformer	8733951083		
24	ODU Electric control box cover	8733954674		
25	ODU Control Board Assembly	8733954675	✓	
25.1	ODU control board	8733954676		
26	Reversing Valve Assembly	8733954677	✓	
26.1	Pressure relief plug	8733954678		
27	Suction Pipe Assembly	8733954679		
28	Expansion Valve Assembly	8733954680	✓	
29	Discharge pipe Assembly	8733954681		
30	Evaporator partition panel	8733954682		
31	Blower access panel	8733954683		
32	Bottom Discharge/Return Access Panel	8733954684		
33	Corner Post Panel 3	8733954685		
34	DC Inverter Compressor	8733953165	✓	
35	Compressor Support Base	8733954686	✓	
36	ODU Control Board Access Panel	8733954687		

## Bosch IDP Packaged Heat Pump 3 Ton Capacity

