

GAS VENT SYSTEMS

SIMPSON

Dura-Vent

- Residential
- Industrial
- Commercial



TYPE "B" GAS VENT SYSTEMS

SIMPSON DURA-VENT

For 33 years, the Dura-Vent Company has been a leading manufacturer of Gas Vent and Chimney Products. In 1982, Dura-Vent joined the Simpson family of companies... famous for their excellence in Strong-Tie wood-to-wood metal connectors. With a new management team, two new manufacturing facilities, and state-of-the-art technology, Simpson Dura-Vent has rapidly developed a new industry-wide standard of excellence in quality, delivery and service. Our commitment is to provide you with the finest products and service to ensure your success and competitive advantage.

PRODUCT DESIGN

Designed to win jobs. Constructed to guarantee profitable, safe, trouble-free installations.



The Simpson Dura-Vent Type "B" gas vent is the most easily assembled and rugged gas vent manufactured in the United States today. Our Type "B" gas vent features a precision twist lock design that is fast and easy

to install. Our new heavy-duty design incorporates hemmed edges, inverted beads for rigidity, and a precise locking mechanism that is exceptionally tight - yet can be disassembled without damage to the product.

A unique construction design clamps the aluminum inner liner in place for rigid, vibration-free performance. Double-wall construction with contour swedging on the inner liner means condensation-free operation.

Corrosion resistance and thermal reflectivity are essential for safe, trouble-free performance. That's why we use only premium grade G90 galvanized steel (.018" min.) the outer casing, and aluminum (.012" min.) for the inner liner.

For safe, efficient, trouble-free gas venting, Simpson Dura-Vent gas vent systems offer the "no equal" advantage for a wide range of applications including: gas-fired furnaces, boilers, water heaters, and wall or space heating applications.

COMPLETE LINE OF VENT CAPS

Gas vent cap design is a key ingredient in a winning job bid. That's why Simpson Dura-Vent offers two different style caps - tailored to meet your needs.

To meet the demands of the residential market, we offer an aesthetically pleasing, low profile, competitively priced vent cap. For commercial applications, or installations demanding performance under extreme wind

and weather conditions, we offer a heavy-duty cap. Both caps are U.L. and U.L.C. listed, tested and designed to exceed "high wind" and low draft impedance standards.



QUALITY VENTING SYSTEMS (Round and Oval)

Simpson Dura-Vent offers a complete selection of gas venting systems covering all residential, commercial, and industrial applications in round sizes 3"-30" and oval in 4", 5" and 6". This high quality, fully tested and approved venting system assures complete safety and is tested to the most stringent U.L. standards 441, file MH#6357.



BY SIMPSON DURA-VENT.



CUSTOMER AND ENGINEERING SERVICES

Since 1956, specifying engineers and installing contractors have relied upon the superior technology and engineering services offered by Simpson Dura-Vent. With one of the leading test facilities in the nation, we offer a fully dedicated research and development program designed to continuously provide solutions to venting problems and offer technical advice on installations. As the nation's leader in venting and chimney fabrication, we have been actively involved in providing advice to key government code bodies, building inspectors and fire marshals.



Our customer service department's commitment to excellence is backed up with a computer system that provides immediate answers on product availability, lead-times, and shipping schedules.

INVENTORIES AND DELIVERY

Simpson Dura-Vent is committed to providing outstanding and exceptional customer service. Offering two strategic manufacturing locations, in California and Mississippi, plus over 700 stocking distributors across the nation, we can provide the most consistent delivery and service anywhere in the United States and abroad.

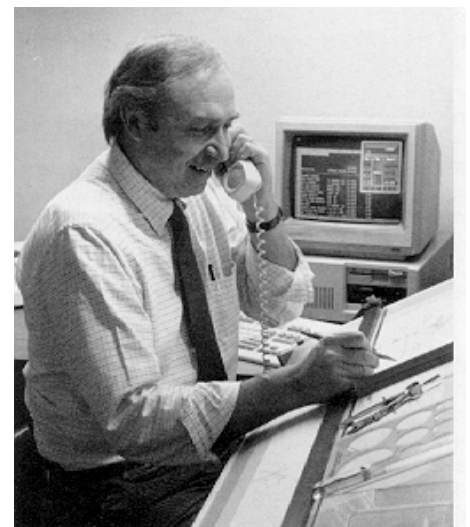


SIMPSON DURA-VENT TYPE "B" GAS VENT SPECIFICATIONS

Simpson Dura-Vent gas vents are suitable for use with low heat gas-fired appliances as outlined and listed in accordance with installation guidelines of the National Fire Protection Association (N.F.P.A.) No.54 and No.211 having a 1" clearance to combustibles in single and multi-family dwellings. The Simpson Dura-Vent Type "B" gas vent (3"-30" Round; 4", 5" and 6" Oval) is a double-wall, U.L. and U.L.C. Listed, air-insulated venting system.

Warning: Type B gas vents are not suitable for use with wood-burning or coal applications; industrial ovens, exhaust ranges and hoods; grease or pollution ducting; or as free-standing exhaust vents for high-temperature applications. Type B gas vents are listed by Underwriters Laboratories for temperature up to 400°F plus ambient and Type BW gas vents are listed up to 480°F plus ambient.

Complete sizing and system capacity information to aid installations can be readily obtained by requesting Simpson Dura-Vent Capacities Brochure #L202.



FOR QUESTIONS PLEASE CALL TOLL FREE:

800-835-4429 ALL USA & CANADA

800-227-7374

800-227-8446

800-922-1611 CA ONLY

707-446-4740 FAX





SIMPSON DURA-VENT MANUFACTURING LOCATIONS

Vacaville, California

P.O. Box 1510

Vacaville, CA 95688

(800) 227-9446

(800) 922-1611 (CA)

FAX (707) 446-4740

Vicksburg, Mississippi

P.O. Box 1253

Vicksburg, MS 39180

45° Adjustable Elbow

3" - 8"

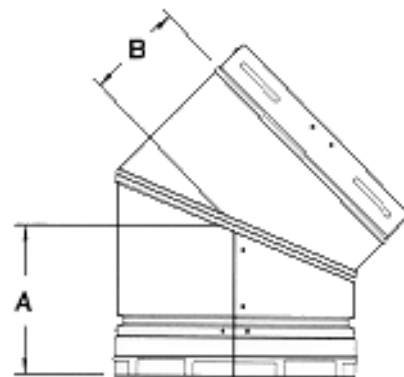
Size	Stock#	A	B
3"	3GVL45	3-1/4"	2"
4"	4GVL45	3-3/4"	2"
5"	5GVL45	3-3/8"	2-1/2"
6"	6GVL45	4"	3"
7"	7GVL45	4-3/4"	3-1/2"
8"	8GVL45	5-1/2"	4"



45° ELBOW 10" - 16"

10" - 16"

Size	Stock#	A	B
10"	10GVL45	6-1/8"	4-3/8"
12"	12GVL45	6-3/4"	4-5/8"
14"	14GVL45	6-1/2"	5"
16"	16GVL45	7-1/4"	6"

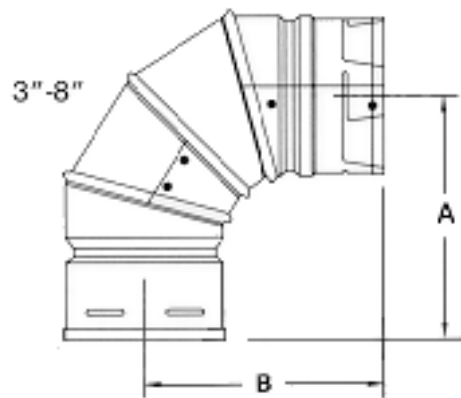


18" - 30" available upon request.
 Sizes 12" and larger are not adjustable.

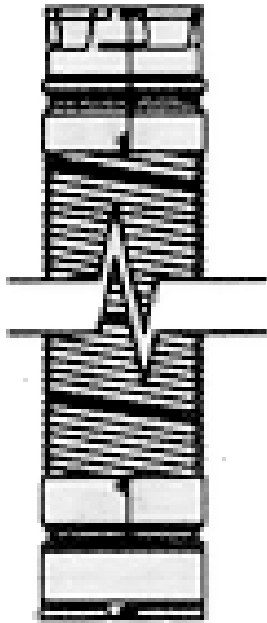
90° Adjustable Elbow

10" - 16"

Size	Stock#	A	B
3"	3GVL90	5-1/2"	5-1/2"
4"	4GVL90	6"	6"
5"	5GVL90	6-1/2"	6-1/2"
6"	6GVL90	7"	7"
7"	7GVL90	8"	6"
8"	8GVL90	9"	7"

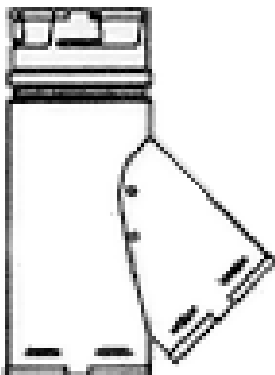


Flexible Lengths



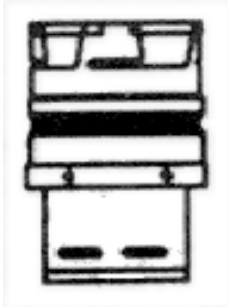
Size	Description	Stock#
3"	60" Length	3DV60
	48" Length	3DV48
	36" Length	3DV36
	24" Length	3DV24
4"	60" Length	4DV60
	48" Length	4DV48
	36" Length	4DV36
	24" Length	4DV24
	12" Length	4DV12
5"	60" Length	5DV60
	48" Length	5DV48
	36" Length	5DV36
	24" Length	5DV24
6"	60" Length	6DV60
	48" Length	6DV48
	36" Length	6DV36
	24" Length	6DV24

Standard "Y"



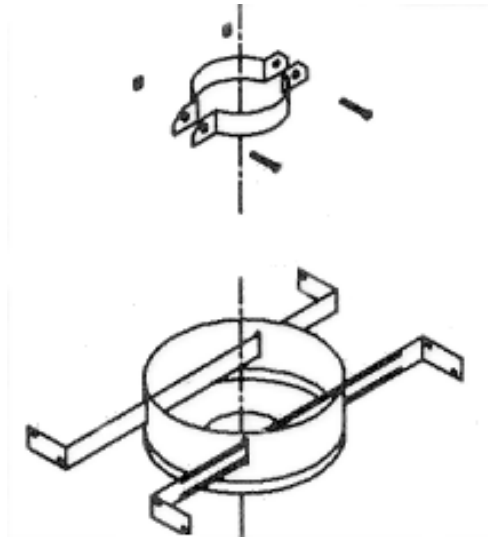
Size	Description	Stock#
3"	Y w/3" BR at 45°	3DVY
4"	Y w/3" BR at 45°	4DVY33
	Y w/4" BR at 45°	4DVY
5"	Y w/3" BR at 45°	5DVY34
	Y w/5" BR at 45°	5DVY
6"	Y w/3" BR at 45°	6DVY34
	Y w/6" BR at 45°	6DVY

Appliance Connector



Size	Description	Stock#
3"	ID	3DVC
4"	ID	4DVC
5"	ID	5DVC

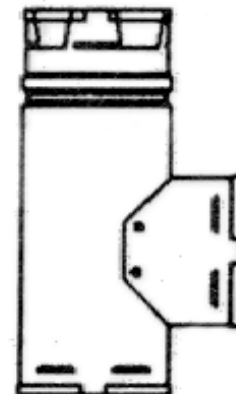
Round Support



Size	Description	Stock#
3"	Fits Pipe	3DVRS
4"	Fits Pipe	4DVRS
5"	Fits Pipe	5DVRS
6"	Fits Pipe	6 DVRS

Tee

Size	Description	Stock#
3"	TEE w/3" at 90°	3DVT
4"	TEE w/4" at 90°	4DVT
5"	TEE w/5" at 90°	5DVT
6"	TEE w/6" at 90°	6DVT



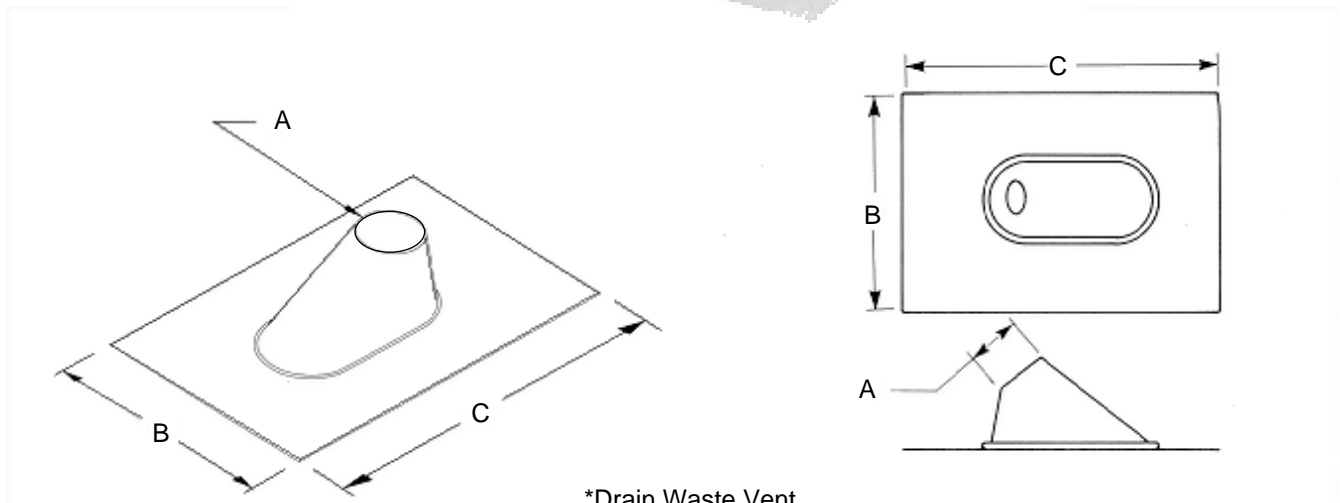


**SIMPSON
DURA-VENT**

SPECIALTY FLASHINGS

Galvanized Plumbing & Dead Soft Aluminum Flashings

Size	Stock#	A	B	C	Application
1/2"	1300	7/8"	11"	13"	1/2" Steel Pipe
3/4"	1301	1"	11"	13"	3/4" Steel Pipe
1"	1302	1-3/8"	11"	13"	*1" D.W.V. Pipe 1" Steel Pipe
1-1/4"	1303	1-5/8"	11"	13"	*1-1/2" D.W.V. Pipe 1-1/4" Steel Pipe
1-1/2"	1304	1-7/8"	11"	13"	1-1/2" Steel Pipe
2"	1305	2-5/8"	11"	13"	2" Steel Pipe



*Drain Waste Vent

Note: Steel pipe flashings fit same diameter P.V.C. Plastic and A.B.S.

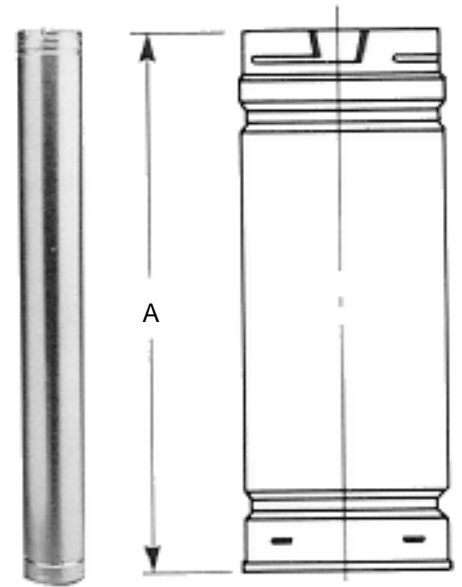


GAS VENT PIPES

Straight Lengths

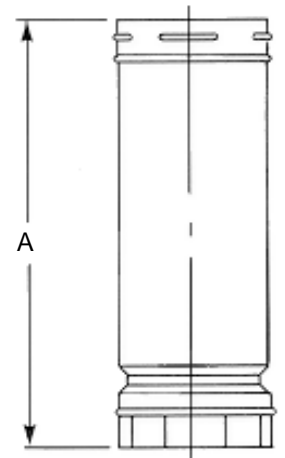
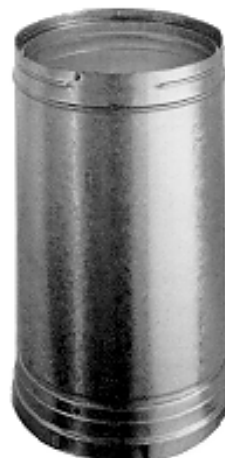
A Length	3" I.D. (3-3/4" O.D.) Stock#	4" I.D. (4-5/8" O.D.) Stock#	5" I.D. (5-5/8" O.D.) Stock#
5'	3GV60	4GV60	5GV60
4'	3GV48	4GV48	5GV48
3'	3GV36	4GV36	5GV36
2'	3GV24	4GV24	5GV24
18"	3GV18	4GV18	5GV18
12"	3GV12	4GV12	5GV12

A Length	6" I.D. (6-5/8" O.D.) Stock#	7" I.D. (7-5/8" O.D.) Stock#	8" I.D. (8-5/8" O.D.) Stock#
5'	6GV60	7GV60	8GV60
4'	6GV48	7GV48	8GV48
3'	6GV36	7GV36	8GV36
2'	6GV24	7GV24	8GV24
18"	6GV18	7GV18	8GV18
12"	6GV12	7GV12	8GV12



10" - 16" Round Diameter Pipe

I.D.	Stock#-3'(A)	Stock#-18"(A)
10"	10GV36	10GV18
12"	12GV36	12GV18
14"	14GV36	14GV18
16"	16GV36	16GV18



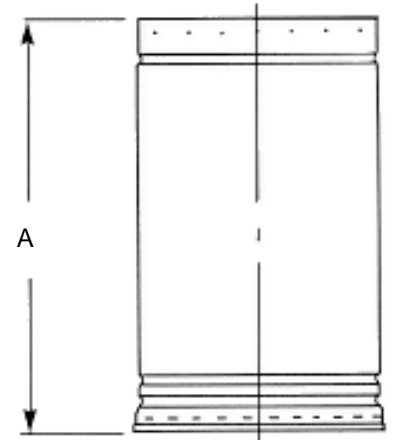
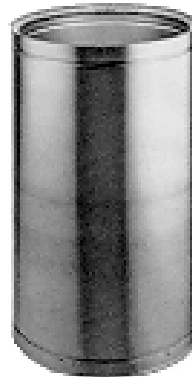


GAS VENT PIPES

Straight Lengths (cont.)

18" Round Diameter Pipe

I.D.	Stock# – 3' (A)	Stock# – 18" (A)
18"	18GV36	18GV18



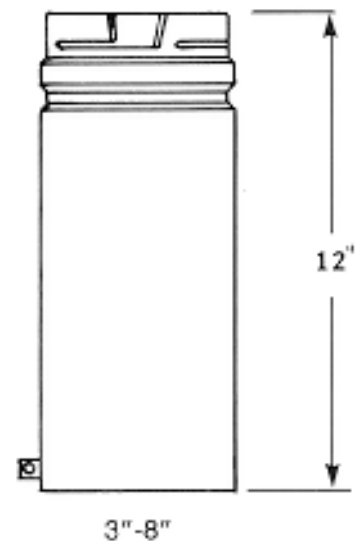
Adjustable Length

12" Length

Size	Stock#
3"	3GV12A
4"	4GV12A
5"	5GV12A
6"	6GV12A
7"	7GV12A
8"	8GV12A
10"	10GV12A
12"	12GV12A

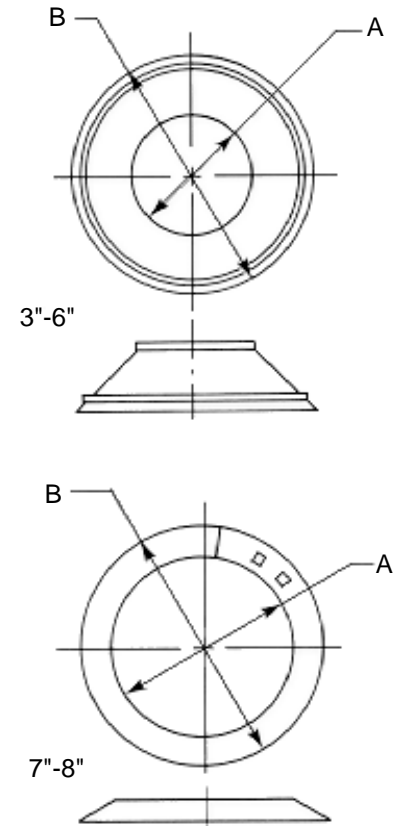
18" Length

Size	Stock#
14"	14GV18A



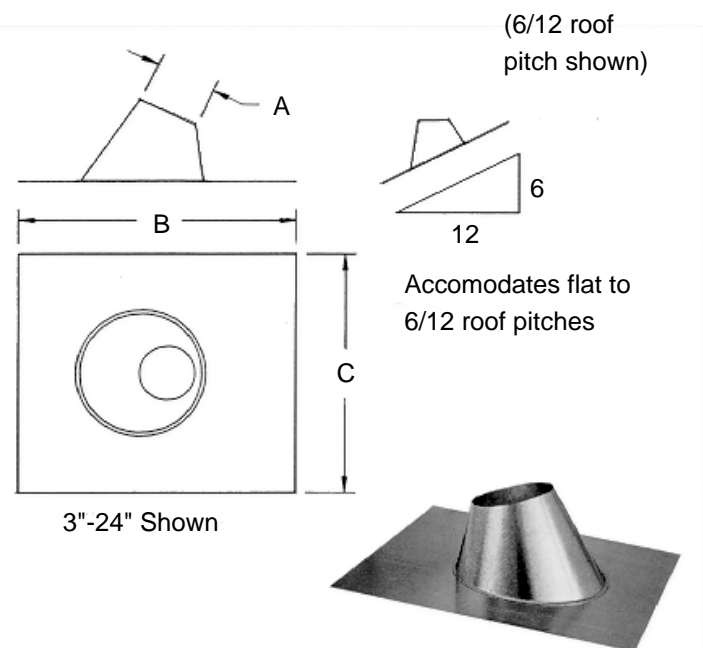
Storm Collar

Size	Stock#	A	B
3"	3GVSC	3-5/8"	7"
4"	4GVSC	4-5/8"	7-3/4"
5"	5GVSC	5-5/8"	8-3/4"
6"	6GVSC	6-5/8"	9-3/4"
7"	7GVSC	8"	11"
8"	8GVSC	9"	12"
10"	10GVSC	11"	15"
12"	12GVSC	13"	17"
14"	14GVSC	16"	21"
16"	16GVSC	18"	23"
18"	18GVSC	20"	25"



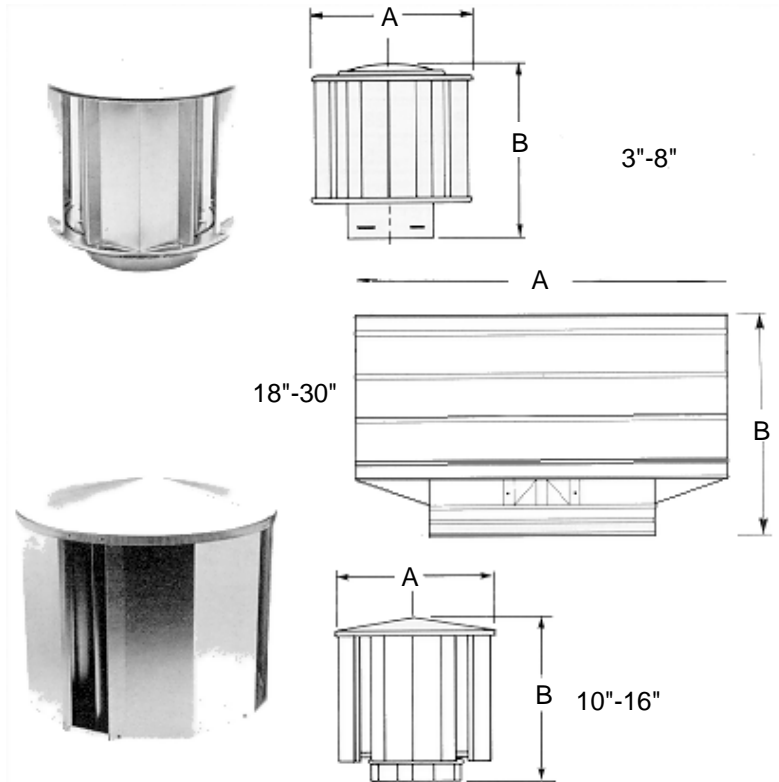
Adjustable Roof Flashing

Size	Stock#	A	B	C
3"	3GVF	3-3/4"	18-1/16"	16"
4"	4GVF	4-3/4"	18-5/16"	17"
5"	5GVF	5-3/4"	20"	18-5/16"
6"	6GVF	6-3/4"	21-7/16"	19-1/2"
7"	7GVF	7-3/4"	22-1/2"	21-7/16"
8"	8GVF	8-3/4"	23-1/2"	21-1/2"
10"	10GVF	10-3/4"	24"	24"
12"	12GVF	12-3/4"	24"	24"
14"	14GVF	15"	31-1/2"	29-1/2"
16"	16GVF	17"	36"	33-1/2"
18"	18GVF	20"	43"	40"



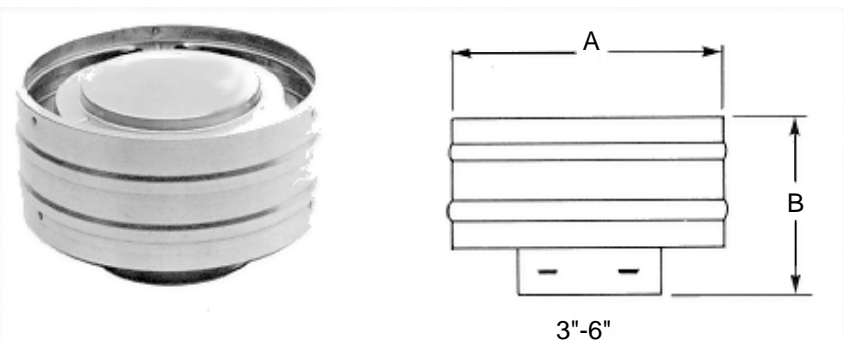
High Wind Vent Top

Size	Stock#	A	B
3"	3GVVTH	7-3/4"	7-3/4"
4"	4GVVTH	8-3/4"	9-1/8"
5"	5GVVTH	9-3/4"	10"
6"	6GVVTH	10-3/8"	10-5/8"
7"	7GVVTH	12"	12-1/4"
8"	8GVVTH	12-3/4"	13"
10"	10GVVT	17"	13-1/2"
12"	12GVVT	19-1/2"	15-1/2"
14"	14GVVT	24"	17-1/2"
16"	16GVVT	26"	19-1/2"
18"	18GVVT	30"	21-1/2"

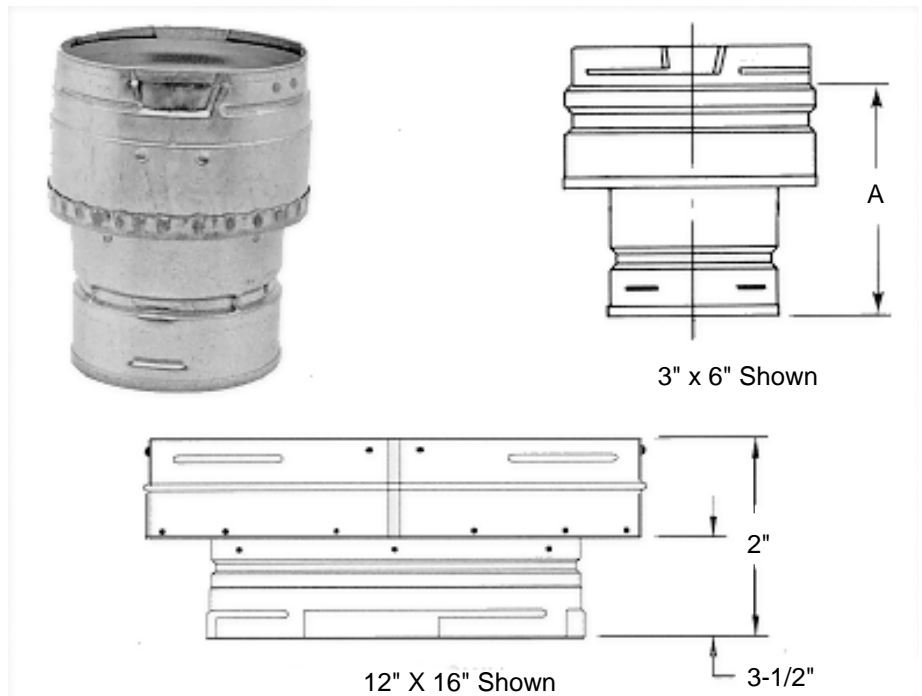


Low-Profile Vent Top

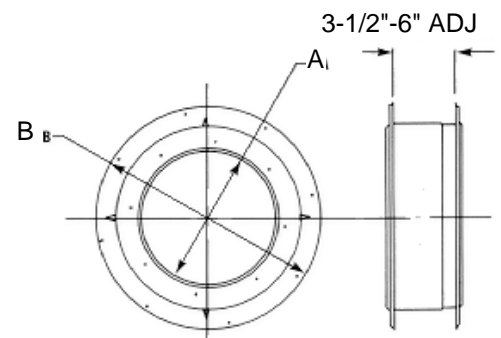
Size	Stock#	A	B
3"	3GVVT	7"	4-7/8"
4"	4GVVT	8"	4-7/8"
5"	5GVVT	9-1/2"	6-3/8"
6"	6GVVT	10-1/2"	6-3/8"



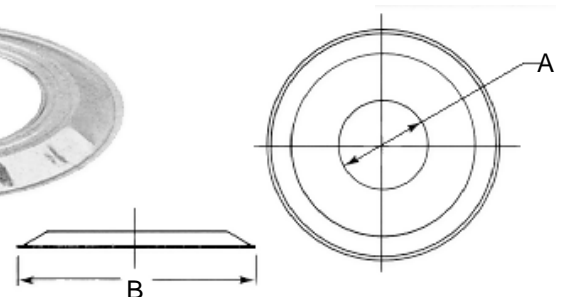
Size	Stock#	A
3" x 4"	3GVX4	5-1/4"
3" x 5"	3GVX5	5-1/4"
3" x 6"	3GVX6	5-1/4"
4" x 5"	4GVX5	5-1/4"
4" x 6"	4GVX6	5-1/4"
5" x 6"	5GVX6	5-1/4"
6" x 7"	6GVX7	6-1/4"
6" x 8"	6GVX8	6-1/4"
7" x 8"	7GVX8	6-1/4"
8" x 10"	8GVX10	6-1/4"



Size	Stock#	A	B
3"	3GVWT	3-3/4"	7-1/2"
4"	4GVWT	4-3/4"	8-1/2"
6"	6GVWT	6-3/4"	10-1/2"
8"	8GVWT	8-3/4"	12-1/2"

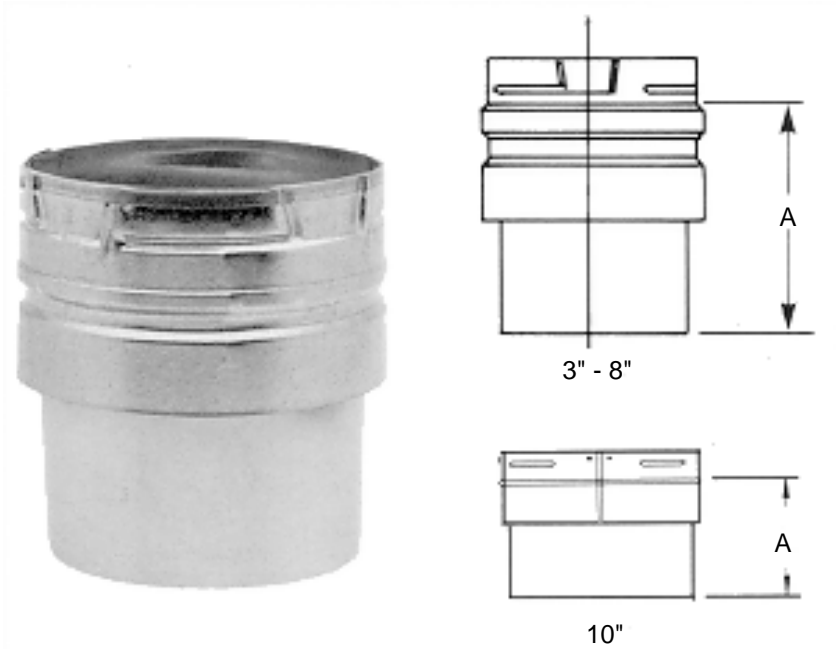

Wall Thimble


Size	Stock#	A	B
3"	3GVPC	3-3/4"	7"
4"	4GVPC	4-3/4"	7-3/4"
5"	5GVPC	5-3/4"	8-3/4"
6"	6GVPC	6-3/4"	9-3/4"


Pipe Collar


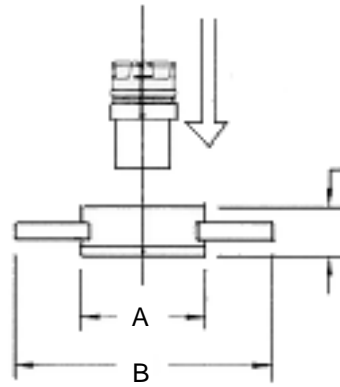
Draft Hood Connector

Size	Stock#	A
3"	3GVC	4-1/2"
4"	4GVC	4-1/2"
5"	5GVC	4-1/2"



Round Firestop Support

NEW
Now With
Adjustable Legs



Nom Size	Stock#	A	B
3" - 4"	3GVRS4	7"	14-1/4", 22-1/4"
7" - 8"	5GVRS6	8"	14-1/4", 22-1/4"

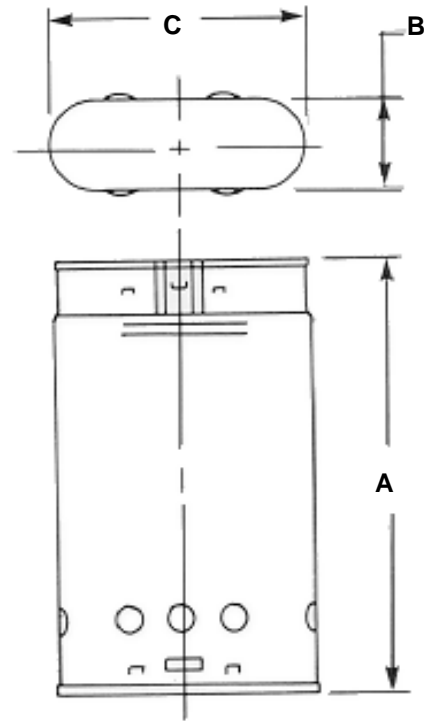


GAS VENT LENGTHS AND FITTINGS

Straight Lengths – Oval

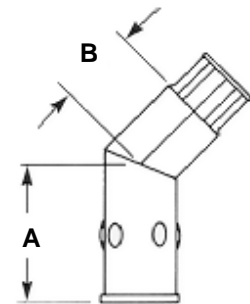
4" Oval Pipe

A Length	Stock#	B	C
5'	4GW60	2-1/2"	7-1/4"
4'	4GW48	2-1/2"	7-1/4"
3'	4GW36	2-1/2"	7-1/4"
2'	4GW24	2-1/2"	7-1/4"
18"	4GW18	2-1/2"	7-1/4"
12"	4GW12	2-1/2"	7-1/4"



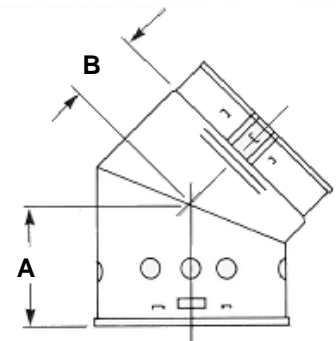
45° Standard Elbow – Oval

Size	4"
A	3-5/8"
B	2-1/8"
Stock #	4GWL45



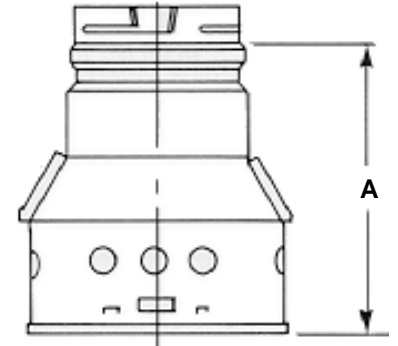
45° Flat Elbow – Oval

Size	4"
A	4-1/8"
B	3-1/8"
Stock #	4GWL45F



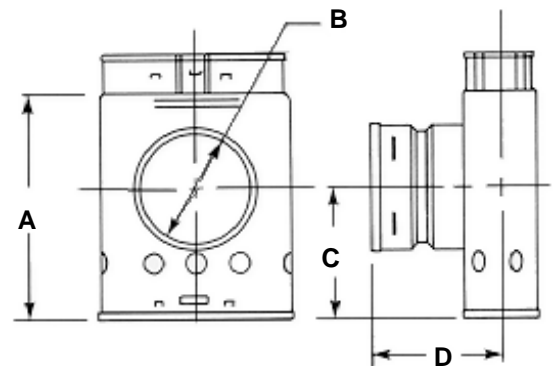
Adaptor – Oval To Round

Size	4"
A	7-3/4"
Stock #	4GWAOR



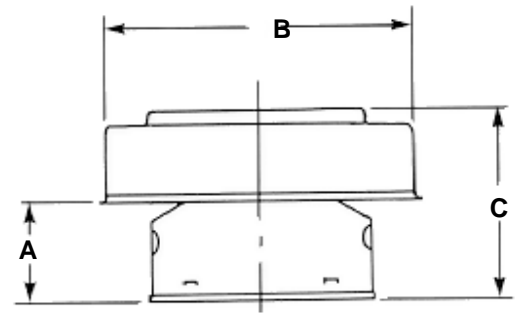
Standard Oval Tee

Size	4"
Stock #	4GWT
A	8-1/2"
B	4"
C	5"
D	4-3/4"



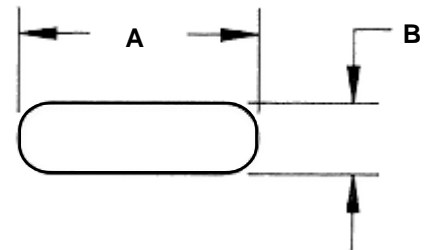
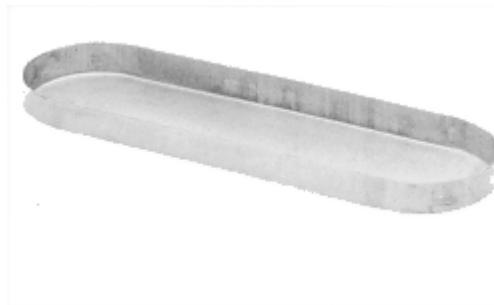
Oval Vent Top

Size	4"
Stock #	4GWVT
A	6-1/8"
B	9-3/4"
C	2-1/2"



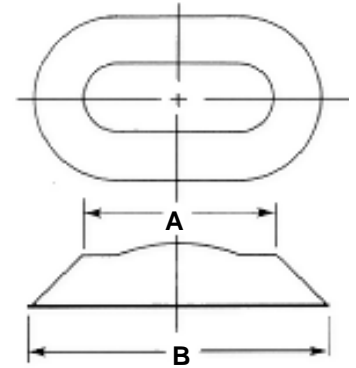
Tee Cap

Size	4"
Stock #	4GWTC
A	6-7/8"
B	2"



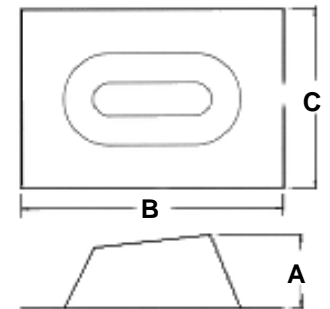
Storm Collar

Size	4"
Stock #	4GWSC
A	7-1/4"
B	10-1/4"



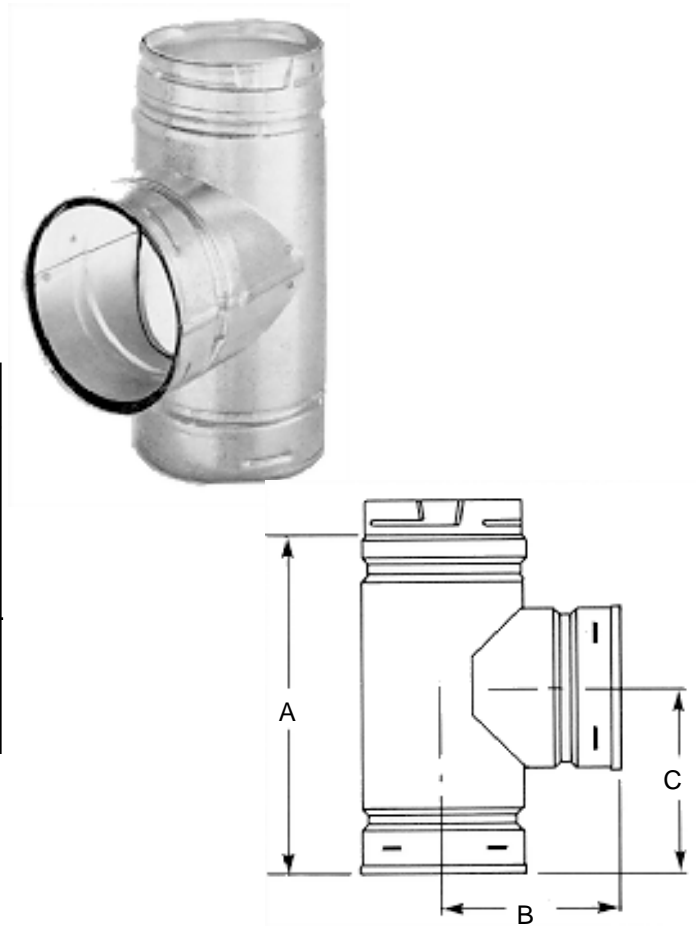
Adjustable Flashing

Size	4"
Stock #	4GWF
A	3-1/2"
B	18-1/2"
C	12-1/2"



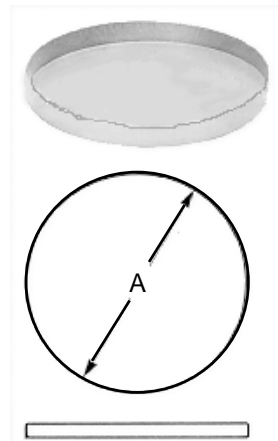
Standard Tee

Size	Stock#	A	B	C
3"	3GVT	8-1/2"	5"	5"
4"	4GVT	9-1/2"	5-1/2"	5-1/2"
5"	5GVT	10-1/2"	6"	6"
6"	6GVT	11-1/2"	6-1/2"	6-1/2"
8"	8GVT	13"	7-3/4"	7-3/4"



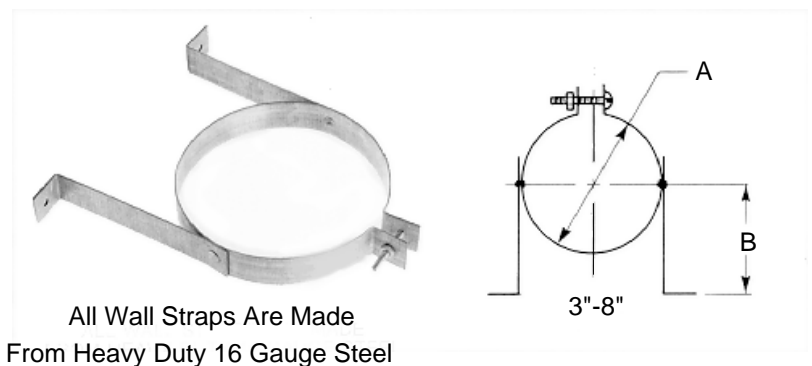
Tee Cap

A	Stock#
5"	5GVTC
6"	6GVTC

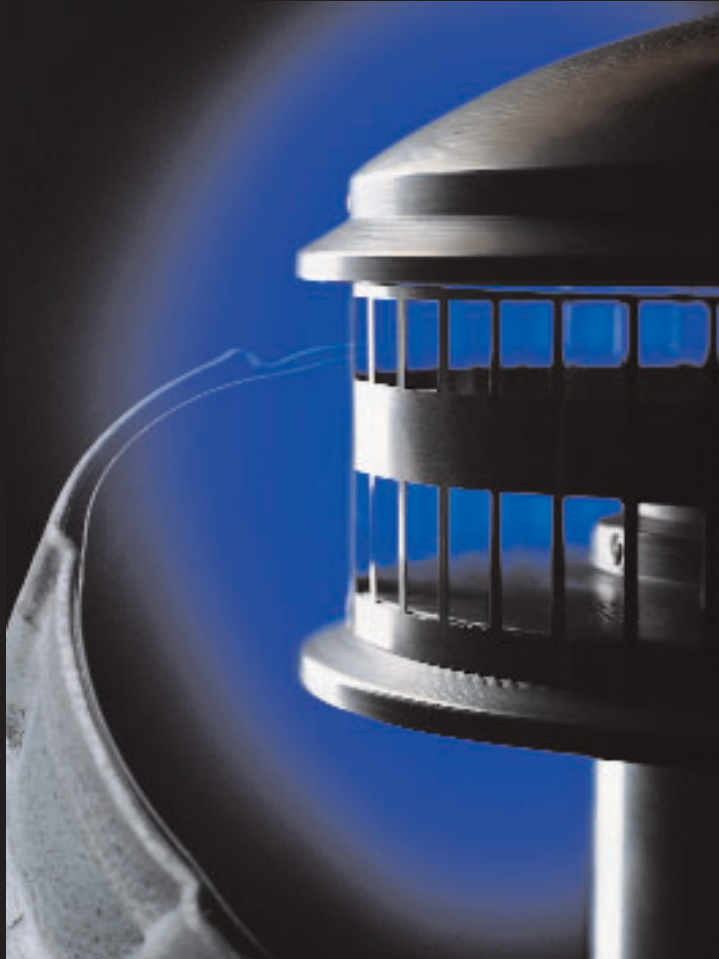


Wall Strap

Size	Stock#	A	B
3"	3GVWS	3-5/8"	2-7/8"
4"	4GVWS	4-5/8"	3-3/8"



GAS VENT



GAS VENT SYSTEMS

TYPE B GAS VENT
DURA/CONNECT®
DURAFLEX®



ENGINEERED EXCELLENCE®

SIMPSON

Dura-Vent®

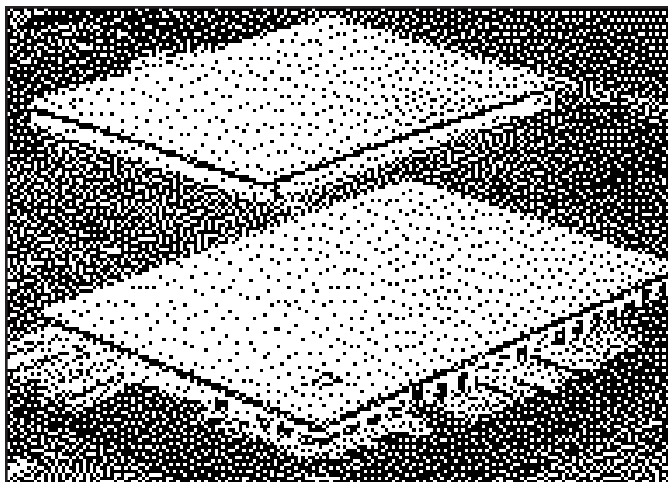
THE COMPANY

For over 40 years, the Dura-Vent Company has been a leading manufacturer of Gas Vent and Chimney products. In 1982, Dura-Vent was purchased by Simpson Manufacturing, the innovative market leader, manufacturing Simpson Strong-Tie metal connectors and joist hangers. In 1994 Simpson Manufacturing became a public company, trading on the New York Stock Exchange (Symbol: SSD).



ENGINEERED EXCELLENCE

Since 1982, Simpson Dura-Vent has become recognized as the technological leader in the venting industry. The precision twist-lock design and rugged quality of our Type B gas vent system has rapidly become the contractor's choice. Consistently, the first to market with new innovations in quality venting systems, Dura-Vent has captured a leadership position in emerging markets such as flexible vent connectors for water heaters and furnaces and venting systems for direct vent appliances. Simpson Dura-Vent is committed to providing the industry with a continuous stream of new products and refinements to existing products, that meet the demands of today's heating products market.

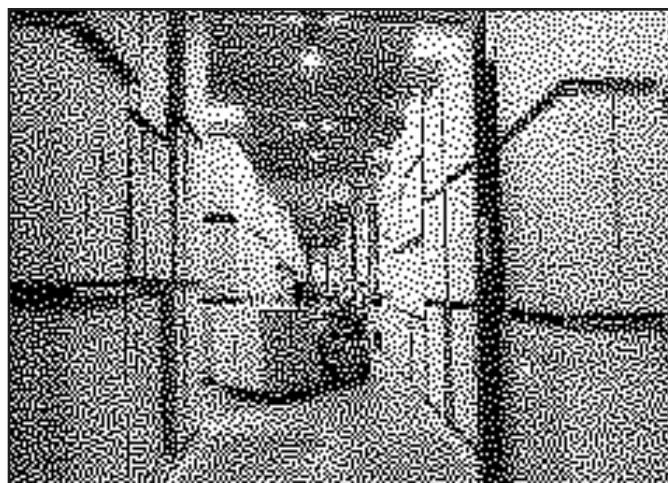


MANUFACTURING

Each year Simpson Dura-Vent invests millions of dollars in machinery, tooling, manufacturing facilities, and world-class manufacturing technology in order to provide unequaled quality and service. All of Simpson Dura-Vent's products are exclusively American made. Manufacturing facilities are located in Vacaville, California and Vicksburg, Mississippi. There is also a service warehouse in Southern California. Simpson Dura-Vent's skilled work force, combined with state-of-the-art machinery, is dedicated to providing consistent quality and service that exceeds industry standards.

CUSTOMER SERVICE

Simpson Dura-Vent's customer service department's commitment to excellence is backed up with a computer system that provides immediate answers on product availability, lead times, and shipping schedules. Our engineering staff is available to answer your technical questions, assist in proper sizing, and to provide solutions to your venting problems. At Simpson Dura-Vent, getting product to the job site complete and on time is of utmost importance. We invest heavily in finished product inventory so that our distributors will be in a position to provide their customers with superior product availability and service.



Gas Vent Systems

Round Pipe Lengths	6
Adjustable Pipe Lengths	7
Elbows	7
Tees	8
Tee Caps	8
Reduction Tees	8
Vent Tops	9
Combo Roof Caps	9
Storm Collars	9
Female Adapters	10
Male Adapters	10
Wall Straps	10
Swivel Adapters	10
Double Wall Y's with 45°	11
Roof Top Termination Kits	11
Pipe Collars	11
Flashings	12
Increasesers	13
Wall Thimbles	13
Draft Hood Connectors	13
Round Bucket Supports	14
Square Firestop Supports	14
Firestop Spacers	14
R/R Adapters	14
Oval Pipe Lengths	15
Oval Pipe Adjustable Lengths	15
Adapters Round to Oval	15
Adapters Oval to Round	15
Oval Elbows	15
Oval Increasesers	16
Oval Vent Tops	16
Oval Storm Collars	16
Oval Tees	16
Oval Flashings	17
Oval Tee Caps	17
Oval Plain Tee Supports	17
Oval Firestop Spacers	17
Oval Base Plates	17

Dura/Connect Single Wall

Dura/Connect Flexible Lengths	18
Water Heater Vent Connector Kits	19
Reduction and Standard Y's	19
Appliance Connectors	20
Standard Tees	20
Reduction Tees	20
Increasesers	21
Tee Caps	21
Round Supports	21
Wall Straps	21

DuraFlex Relinings

DuraFlex Kits	22
Extensions	23
Tees with Removable Branch	23
Cap Assembly	23
Flashing Covers	24
Universal Adapters / Flex Connectors	24
Mortar Sleeves	24
Flex Pullers	24
Flex Relinings	24
Masonry Relining Termination Kits	24
Male and Female Adapters	24

Gas Vent Product Information

Gas Vent Charts	25
-----------------------	----

SDV Company Policy

Warranties	26
Terms	26
Company Policy	26
Customer Service Center	26

These products are listed by
UNDERWRITERS
LABORATORIES INC.
and bear the mark:



ENGINEERED EXCELLENCE



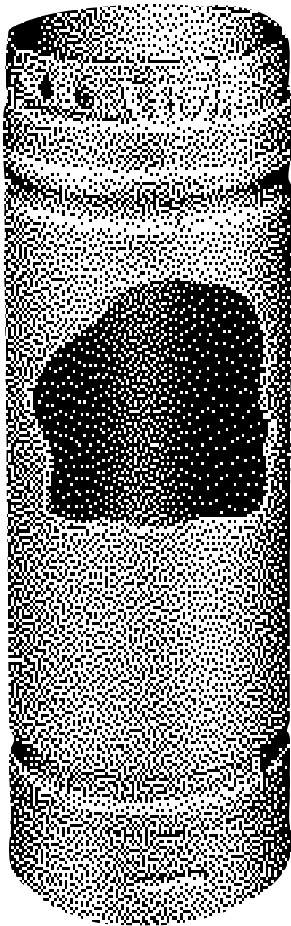
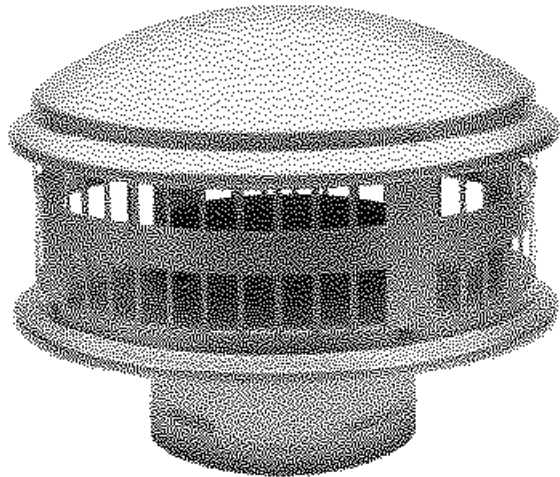
*Professional gas
venting systems and
accessories*

Gas Vent
Type B Double Wall Vent

Dura/Connect®
Gas Single Wall Connector

DuraFlex®
Gas Masonry Relining

SIMPSON DURA-VENT



TWIST-LOCK CONNECTIONS

The Simpson Dura-Vent Type B gas vent system features our “no equal” twist-lock connections. Precision swaged fittings offer the contractor a superior positive-lock connection that is fast and easy to assemble. When necessary, the system may also be disconnected without damage to the product.

HEAVY-DUTY CONSTRUCTION

Simpson Dura-Vent Type B gas vent has been designed to meet the rugged demands of the job site. To resist damage or ovalizing, inverse beads and hemmed edges have been designed into both ends of the vent pipe to provide for superior structural rigidity. Hemmed edges also serve to eliminate cuts from raw sheet metal edges. The inner liner is recessed to eliminate damage in handling.

ENGINEERED FOR PERFORMANCE

Simpson Dura-Vent Type B gas vent has been engineered for optimum vent performance. The twist-lock design eliminates the need for perforations in the outer walls, as is common with snap-lock type systems. Inverted beads on each end of the pipe seal the air space between the inner and outer walls, providing superior insulating characteristics. Engineered to heat up rapidly and remain hot during the operation of the appliance, Simpson Dura-Vent Type B gas vent is the contractor's choice for minimizing the effects of condensation on the appliance and vent system.

THE CONTRACTOR'S CHOICE!

QUALITY GAS VENT SYSTEMS



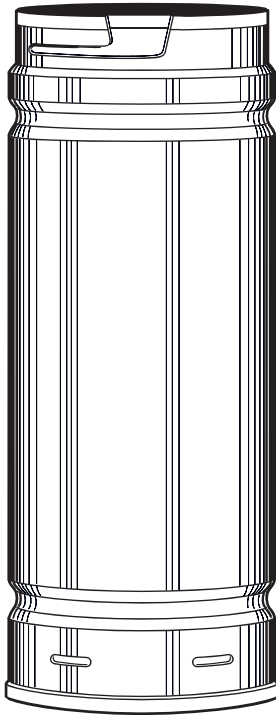
Simpson Dura-Vent offers superior quality in round, oval, and flexible gas vent systems. The Dura-Vent gas vent system supports enhanced performance of gas appliances. Many of the vent features provide installation safety and additional handling strength to create one of the highest quality gas vent products available. Pipe lengths are available in multiple lengths of 1 to 5 feet with a full complement of rigid and adjustable fittings. No cutting or special fabrication is ever necessary. Professional vent for the professional installer.

COMPLETE PRODUCT OFFERING

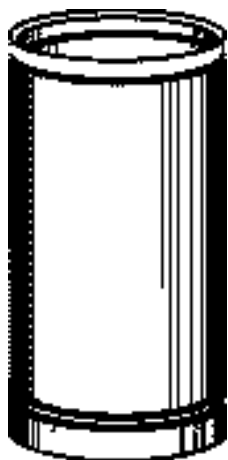
Simpson Dura-Vent Type B gas vent is available in round sizes 3 to 30 inches. Oval "BW" vent is available in sizes 4, 5, and 6 inches. Dura/Connect flexible vent connectors are available in 3, 4, 5, and 6 inch sizes. DuraFlex gas relining systems are available in 3, 4, 5, 5½, 6, and 7 inch sizes. All product lines are offered with a complete line of fittings for every conceivable application. Simpson Dura-Vent products are made in the United States and are available through a nationwide network of distributors and dealers.

Dura-Vent gas vent
pipe and accessories
assemble quickly with twist-
lock connections





3-16"



18-30"

3" Diameter - od 3 5/8"

Length	Stock #	Order #
5'	3GV60	1
4'	3GV48	400
3'	3GV36	10
2'	3GV24	385
18"	3GV18	20
12"	3GV12	30
6"	3GV06	40

4" Diameter - od 4 5/8"

Length	Stock #	Order #
5'	4GV60	2
4'	4GV48	401
3'	4GV36	11
2'	4GV24	386
18"	4GV18	21
12"	4GV12	31
6"	4GV06	41

5" Diameter - od 5 5/8"

Length	Stock #	Order #
5'	5GV60	3
4'	5GV48	402
3'	5GV36	12
2'	5GV24	387
18"	5GV18	22
12"	5GV12	32
6"	5GV06	42

6" Diameter - od 6 5/8"

Length	Stock #	Order #
5'	6GV60	4
4'	6GV48	403
3'	6GV36	13
2'	6GV24	388
18"	6GV18	23
12"	6GV12	33
6"	6GV06	43

7" Diameter - od 7 5/8"

Length	Stock #	Order #
5'	7GV60	5
4'	7GV48	404
3'	7GV36	14
2'	7GV24	389
18"	7GV18	24
12"	7GV12	34
6"	7GV06	44

8" Diameter - od 8 5/8"

Length	Stock #	Order #
5'	8GV60	6
4'	8GV48	405
3'	8GV36	15
2'	8GV24	390
18"	8GV18	25
12"	8GV12	35

10" Diameter - od 11"

Length	Stock #	Order #
3'	10GV36	16
18"	10GV18	26

12" Diameter - od 13"

Length	Stock #	Order #
3'	12GV36	17
18"	12GV18	27

14" Diameter - od 15"

Length	Stock #	Order #
3'	14GV36	200
18"	14GV18	220

16" Diameter - od 17"

Length	Stock #	Order #
3'	16GV36	201
18"	16GV18	221

18" Diameter - od 20"

Length	Stock #	Order #
3'	18GV36	202
18"	18GV18	222

20" Diameter - od 22"

Length	Stock #	Order #
3'	20GV36	203
18"	20GV18	223

22" Diameter - od 24"

Length	Stock #	Order #
3'	22GV36	204
18"	22GV18	224

24" Diameter - od 26"

Length	Stock #	Order #
3'	24GV36	205
18"	24GV18	225

26" Diameter - od 28"

Length	Stock #	Order #
3'	26GV36	206
18"	26GV18	226

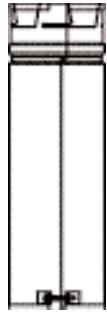
28" Diameter - od 30"

Length	Stock #	Order #
3'	28GV36	207
18"	28GV18	227

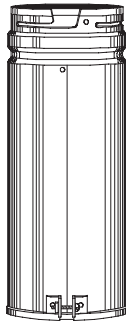
30" Diameter - od 32"

Length	Stock #	Order #
3'	30GV36	208
18"	30GV18	228

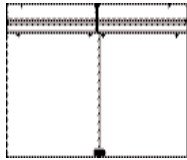
NOTE: All items 14" and larger are considered special made and as such, are non-cancelable and non-returnable.



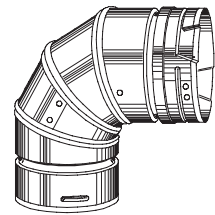
3-16"



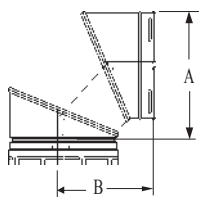
18-30"



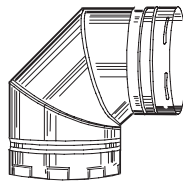
3" - 8"



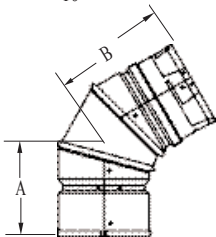
3-8"



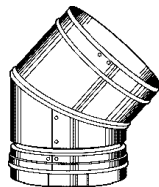
10"



3-8"



18-30"



Dimensions shown at 45° position

12" Adjustable Lengths

Size	Stock #	Order #
3"	3GV12A	50
4"	4GV12A	51
5"	5GV12A	52
6"	6GV12A	53
7"	7GV12A	54
8"	8GV12A	55
10"	10GV12A	56
12"	12GV12A	57
14"	14GV18A	370
16"	16GV18A	371

dv Adds 2 1/2 to 11 1/2" to system length.

18" Adjustable Lengths

Size	Stock #	Order #
18"	18GV18A	372
20"	20GV18A	373
22"	22GV18A	374
24"	24GV18A	375
26"	26GV18A	376
28"	28GV18A	377
30"	30GV18A	378

dv Adds 2 1/2 to 16 1/2" to system length.

90° Adjustable Elbows

Size	Stock #	Order #	A	B
3"	3GVL90	60	5 1/2"	5 1/2"
4"	4GVL90	61	6	6
5"	5GVL90	62	6 1/2	6 1/2
6"	6GVL90	63	6 7/8	6 7/8
7"	7GVL90	64	8 1/2	8 7/8
8"	8GVL90	65	8 7/8	8 5/8
10"	10GVL90	66	9 5/8	9 5/8

45/60° Adjustable Elbows

Size	Stock #	Order #	A	B
3"	3GVL45	70	4 1/4"	4"
4"	4GVL45	71	4 1/2	4 1/2
5"	5GVL45	72	4 1/2	4 1/2
6"	6GVL45	73	5	5

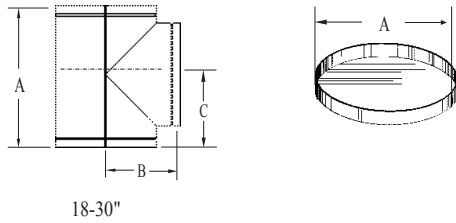
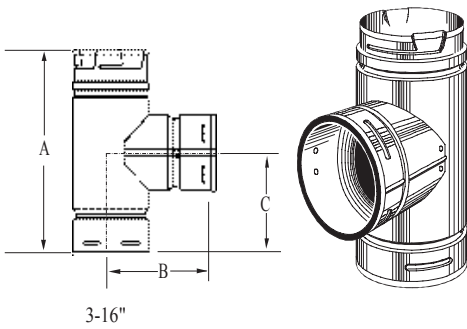
45° Elbows

Size	Stock #	Order #	A	B
7"	7GVL45	74	6 1/2"	6 1/4"
8"	8GVL45	75	6 1/2	6 1/2
10"	10GVL45	76	5 3/4	5 3/4
12"	12GVL45	77	6 1/8	6 1/4
14"	14GVL45	250	6 1/2	6 7/8
16"	16GVL45	251	7 1/4	7 1/4
18"	18GVL45	252	8 1/4	10
20"	20GVL45	253	8 3/8	9 7/8
22"	22GVL45	254	8 1/2	9 3/4
24"	24GVL45	255	8 7/8	9 3/4
26"	26GVL45	256	9	10 1/4
28"	28GVL45	257	9	10 1/4
30"	30GVL45	258	9 1/2	10 3/4

dv 45/60° 3 piece design in 3" to 8" sizes.

dv 90° 4 piece design in 3" to 8" and 3 piece design in 10".

dv Up to 10" elbows are adjustable, sizes 12" and larger are not adjustable.

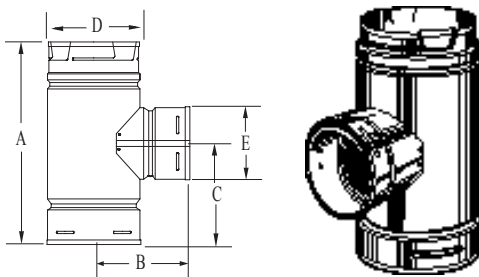


Standard Tees

Size	Stock #	Order #	A	B	C
3"	3GVT	80	9 1/4"	4 1/2"	4 5/8"
4"	4GVT	81	10 1/4"	4 7/8"	5 1/8"
5"	5GVT	82	11"	5 5/8"	5 1/2"
6"	6GVT	83	12 1/4"	5 7/8"	6 1/8"
7"	7GVT	84	13 1/4"	6 3/4"	6 5/8"
8"	8GVT	85	14 1/2"	7 3/8"	7 1/4"
10"	10GVT	86	17 1/8"	8 1/2"	8 1/2"
12"	12GVT	87	19 3/4"	10"	9 3/8"
14"	14GVT	240	20 7/8"	11"	10 1/2"
16"	16GVT	241	25"	12 1/2"	12 1/2"
18"	18GVT	242	29"	15"	15"
20"	20GVT	243	32"	16"	16"
22"	22GVT	244	33"	17"	17"
24"	24GVT	245	35"	18"	18"
26"	26GVT	246	35 1/2"	18 1/2"	17 3/4"
28"	28GVT	247	36"	19"	18 1/2"
30"	30GVT	248	41 1/2"	20 1/2"	20 3/4"

Tee Caps

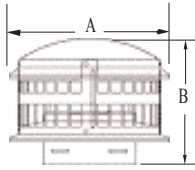
A	Stock #	Order #
3"	3GVTC	90
4"	4GVTC	91
5"	5GVTC	92
6"	6GVTC	93
7"	7GVTC	94
8"	8GVTC	95
10"	10GVTC	96
12"	12GVTC	97
14"	14GVTC	290
16"	16GVTC	291
18"	18GVTC	292
20"	20GVTC	293
22"	22GVTC	294
24"	24GVTC	295
26"	26GVTC	296
28"	28GVTC	297
30"	30GVTC	298



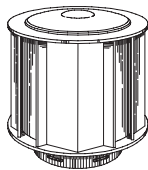
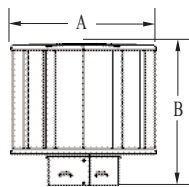
Reduction Tees

Size	Stock #	Order #	A	B	C	D	E
4"x 3"	4GVTR3	81T3	9 1/8"	5 1/4"	4 5/8"	4 5/8"	3 5/8"
5"x 4"	5GVTR4	82T4	10"	5 3/4"	5"	5 5/8"	4 5/8"
5"x 3"	5GVTR3	82T3	9 1/8"	5 9/16"	4 5/8"	5 5/8"	3 5/8"
6"x 4"	6GVTR4	83T4	9 7/8"	6 1/2"	5 1/2"	6 5/8"	4 5/8"
6"x 3"	6GVTR3	83T3	9 1/8"	6 1/2"	4 5/8"	6 5/8"	3 5/8"

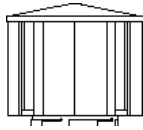
dv Other sizes available upon request.



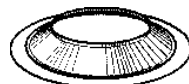
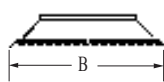
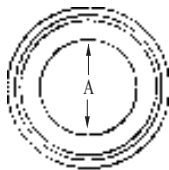
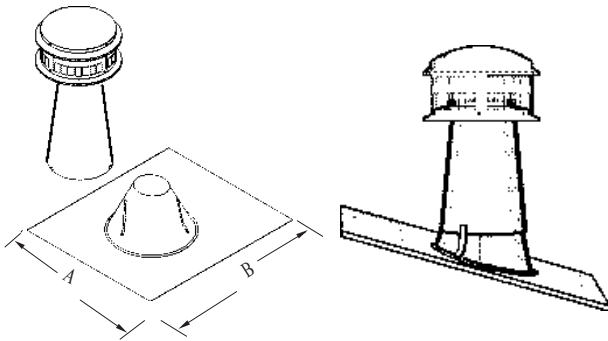
3-8" DuraCap Vent Top



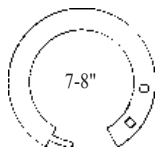
3-8" High Wind Vent Top



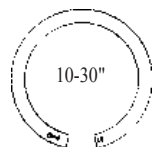
10-18" High Wind Vent Top 20-30"



3-6"



7-8"



10-30"

DuraCap Vent Tops

Size	Stock #	Order #	A	B
3"	3GVDC	630	8"	5 3/4"
4"	4GVDC	631	8	5 3/4
5"	5GVDC	632	11	7 1/4
6"	6GVDC	633	11	7 1/4
7"	7GVDC	634	15	8
8"	8GVDC	635	15	8

High Wind Vent Tops

Size	Stock #	Order #	A	B
3"	3GVVTH	130	7 1/2"	7 1/4"
4"	4GVVTH	131	8 1/2	8 1/4
5"	5GVVTH	132	9 1/2	9 3/8
6"	6GVVTH	133	10 1/2	9 1/4
7"	7GVVTH	134	11 1/2	11 3/4
8"	8GVVTH	135	12 1/2	12 3/4
10"	10GVVT	136	17 1/2	16
12"	12GVVT	137	19 1/4	18 3/4
14"	14GVVT	260	24	17 1/2

Size	Stock #	Order #	A	B
16"	16GVVT	261	26"	19 1/2"
18"	18GVVT	262	30	21 1/2
20"	20GVVT	263	34	23 1/2
22"	22GVVT	264	36	25 1/2
24"	24GVVT	265	39	27 1/2
26"	26GVVT	266	44	29 1/2
28"	28GVVT	267	48	31 1/2
30"	30GVVT	268	50	33 1/2

Combo Caps

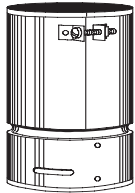
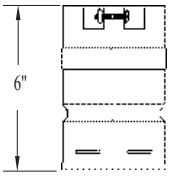
Size	Stock #	Order #	A	B
3"	3GVVTF	360	16"	18 3/8"
4"	4GVVTF	361	17	18 3/8
5"	5GVVTF	362	18 1/4	20
6"	6GVVTF	363	19 1/4	21 1/2

DV Fits 0/12 to 6/12 roof. Caps are UL Listed.

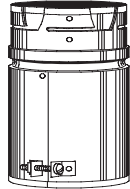
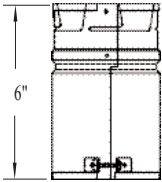
Storm Collars

Size	Stock #	Order #	A	B
3"	3GVSC	150	3 5/8"	7 3/8"
4"	4GVSC	151	4 5/8	8 1/8
5"	5GVSC	152	5 5/8	9 1/8
6"	6GVSC	153	6 5/8	10 5/8
7"	7GVSC	154	7 5/8	11 1/8
8"	8GVSC	155	8 5/8	12 5/8
10"	10GVSC	156	11	15
12"	12GVSC	157	13	17
14"	14GVSC	270	16"	21"

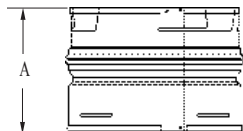
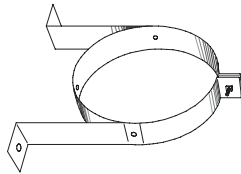
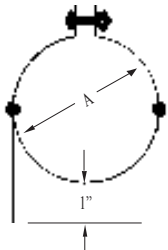
Size	Stock #	Order #	A	B
16"	16GVSC	271	18	23
18"	18GVSC	272	20	25
20"	20GVSC	273	22	27
22"	22GVSC	274	24	29
24"	24GVSC	275	26	31
26"	26GVSC	276	28	33
28"	28GVSC	277	30	35
30"	30GVSC	278	32	37



Female Adapter



Male Adapter



Female Adapters

Size	Stock #	Order #
3"	3GVAF	496
4"	4GVAF	497
5"	5GVAF	498
6"	6GVAF	499

Male Adapters

Size	Stock #	Order #
3"	3GVAM	490
4"	4GVAM	491
5"	5GVAM	492
6"	6GVAM	493

Wall Straps

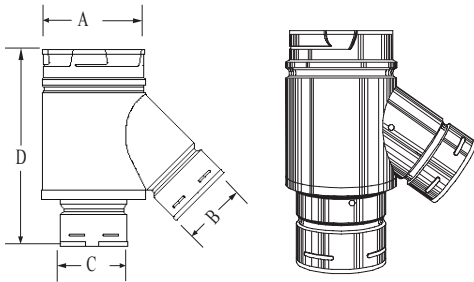
Size	Stock #	Order #	A
3"	3GVWS	1485	3 5/8"
4"	4GVWS	1486	4 5/8"
5"	5GVWS	1487	5 5/8"
6"	6GVWS	1488	6 5/8"
7"	7GVWS	1489	7 5/8"
8"	8GVWS	1490	8 5/8"

DV Wall Straps can also be used with Dura/Connect pipe. 10" B Vent (11" OD) uses 7" Dura/Plus Chimney Wall Strap, stock # 9168.

Swivel Adapters

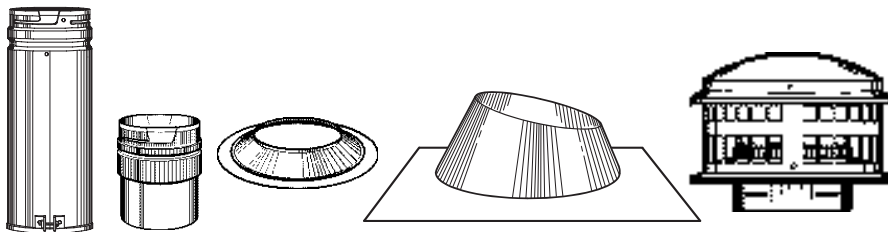
Size	Stock #	Order #	A
3"	3GVSWL	451	4 3/4"
4"	4GVSWL	452	4 3/4"
5"	5GVSWL	453	4 3/4"
6"	6GVSWL	454	4 3/4"
7"	7GVSWL	455	4 3/4"
8"	8GVSWL	456	4 3/4"

Swivel Adapter twist-lock connects to elbow or tee for a 360 degree turn to provide easy connection.



Double Wall Y's with 45° Branch

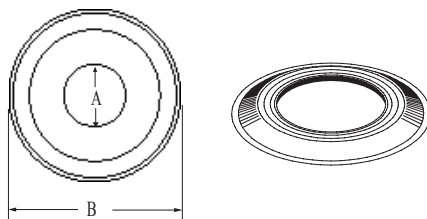
Size	Stock #	Order #	A	B	C	D
4"x4"x3"	4GVY43	425	4 5/8"	4 5/8"	3 5/8"	12 1/4"
4"x4"x4"	4GVY44	426	4 5/8"	4 5/8"	4 5/8"	13 1/4"
4"x3"x4"	4GVY34	427	4 5/8"	3 5/8"	4 5/8"	13 1/4"
5"x3"x4"	5GVY34	430	5 5/8"	3 5/8"	4 5/8"	12 1/4"
5"x4"x4"	5GVY44	431	5 5/8"	4 5/8"	4 5/8"	13 1/4"
6"x3"x4"	6GVY34	440	6 5/8"	3 5/8"	4 5/8"	12 1/4"
6"x4"x3"	6GVY43	441	6 5/8"	4 5/8"	3 5/8"	12 1/4"
6"x4"x4"	6GVY44	442	6 5/8"	4 5/8"	4 5/8"	13 1/4"
6"x4"x5"	6GVY45	443	6 5/8"	4 5/8"	5 5/8"	13 1/4"
6"x3"x5"	6GVY35	445	6 5/8"	3 5/8"	5 5/8"	13 1/4"
7"x3"x5"	7GVY35	450	7 5/8"	3 5/8"	5 5/8"	13 1/4"



Roof Top Termination Kits

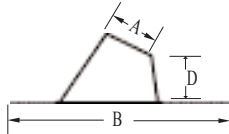
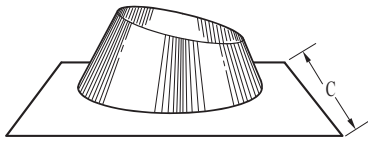
Size	Stock #	Order #
3"	3GVK	470
4"	4GVK	471
5"	5GVK	472

KIT CONTAINS: DuraCap vent top, storm collar, adjustable roof flashing, 12" adjustable length and draft-hood connector.



Pipe Collars

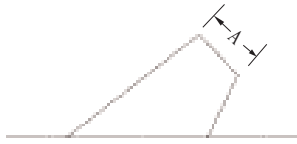
Size	Stock #	Order #	A	B
3"	3GVPC	170	3 3/4"	7"
4"	4GVPC	171	4 3/4"	7 3/4"
5"	5GVPC	172	5 3/4"	8 3/4"
6"	6GVPC	173	6 3/4"	9 3/4"



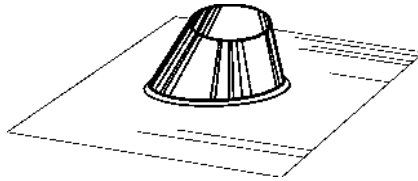
DV Accommodates flat to 6/12 roof pitches.

Adjustable Roof Flashings

Size	Stock #	Order #	A	B	C	14"	14GVF	280	15"	31 1/2"	29 1/2"
3"	3GVF	140	3 5/8"	18 3/8"	16"	16"	16GVF	281	17"	36"	33 1/2"
4"	4GVF	141	4 5/8"	18 3/8"	17"	18"	18GVF	282	20"	43"	40"
5"	5GVF	142	5 5/8"	20"	18 3/8"	20"	20GVF	283	22"	43"	40"
6"	6GVF	143	6 3/4"	21 1/2"	19 1/4"	22"	22GVF	284	24"	45"	41 9/16"
7"	7GVF	144	7 3/4"	22 1/2"	21 1/2"	24"	24GVF	285	26"	45"	44 3/4"
8"	8GVF	145	8 3/4"	23 1/2"	21 1/2"	26"	26GVF	286	28"	44 3/4"	44 3/4"
10"	10GVF	146	11 3/8"	24"	24"	28"	28GVF	287	30"	50"	50"
12"	12GVF	147	13 1/2"	24"	24"	30"	30GVF	288	32"	52"	52"



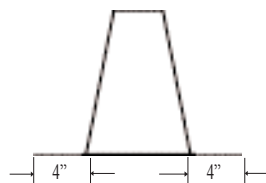
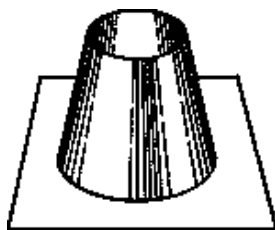
Steep Roof Flashing



DV Accommodates flat to 7/12 to 12/12 roof pitch.

Steep Roof Flashings

Size	Stock #	Order #	A
3"	3GVFSR	140S	3 3/4"
4"	4GVFSR	141S	4 3/4"
5"	5GVFSR	142S	5 3/4"
6"	6GVFSR	143S	6 3/4"
7"	7GVFSR	144S	7 3/4"
8"	8GVFSR	145S	8 3/4"

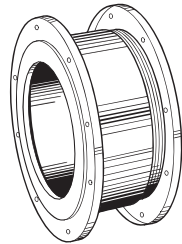
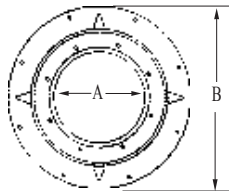
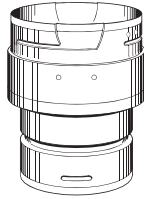
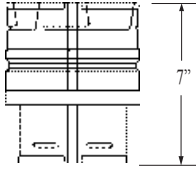


Tall Cone Flashing

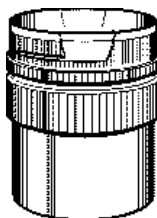
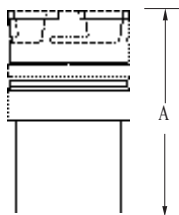
DV For flat roof tops.

Tall Cone Roof Flashings

Size	Stock #	Order #	A	14"	14GVFF	280F	12"
3"	3GVFF	140F	12"	16"	16GVFF	281F	12"
4"	4GVFF	141F	12"	18"	18GVFF	282F	12"
5"	5GVFF	142F	12"	20"	20GVFF	283F	12"
6"	6GVFF	143F	12"	22"	22GVFF	284F	12"
7"	7GVFF	144F	12"	24"	24GVFF	285F	12"
8"	8GVFF	145F	12"	26"	26GVFF	286F	12"
10"	10GVFF	146F	12"	28"	28GVFF	287F	12"
12"	12GVFF	147F	12"	30"	30GVFF	288F	12"



Adjusts out 3 1/2 to 6 inches.



Increasers

Size	Stock #	Order #	7" x 8"	7GVX8	108
3" x 4"	3GVX4	100	8" x 10"	8GVX10	109
3" x 5"	3GVX5	101	8" x 12"	8GVX12	110
3" x 6"	3GVX6	102	10" x 12"	10GVX12	111
3" x 7"	3GVX7	112	** x 14"	**GVX14	209
4" x 5"	4GVX5	103	** x 16"	**GVX16	219
4" x 6"	4GVX6	104	** x 18"	**GVX18	229
4" x 7"	4GVX7	113	** x 20"	**GVX20	239
4" x 8"	4GVX8	116	** x 22"	**GVX22	249
5" x 6"	5GVX6	105	** x 24"	**GVX24	259
5" x 7"	5GVX7	115	** x 26"	**GVX26	269
5" x 8"	5GVX8	117	** x 28"	**GVX28	279
6" x 7"	6GVX7	106	** x 30"	**GVX30	289
6" x 8"	6GVX8	107			

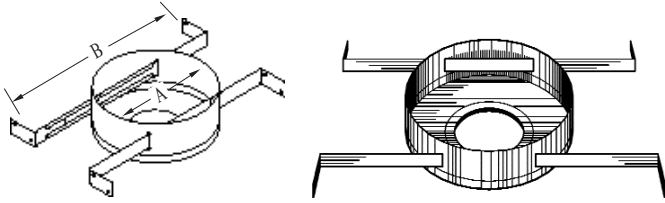
DV Additional sizes available.

Wall Thimbles

Size	Stock #	Order #	A	B
3"	3GVWT	160	3 3/4"	7 1/2"
4"	4GVWT	161	4 3/4"	8 1/2"
5"	5GVWT	162	5 3/4"	9 1/2"
6"	6GVWT	163	6 3/4"	10 1/2"
7"	7GVWT	164	7 3/4"	11 1/2"
8"	8GVWT	165	8 3/4"	12 1/2"

Draft Hood Connectors

Size	Stock #	Order #	A	14"	14GVC	190	10"
3"	3GVC	120	4 1/2"	16"	16GVC	191	10
4"	4GVC	121	4 1/2"	18"	18GVC	192	12
5"	5GVC	122	4 1/2"	20"	20GVC	193	12
6"	6GVC	123	4 1/2"	22"	22GVC	194	14
7"	7GVC	124	7	24"	24GVC	195	14
8"	8GVC	125	7	26"	26GVC	269	16 1/2
10"	10GVC	126	7	28"	28GVC	279	16 1/2
12"	12GVC	127	7	30"	30GVC	289	16 1/2



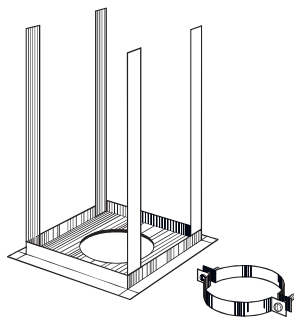
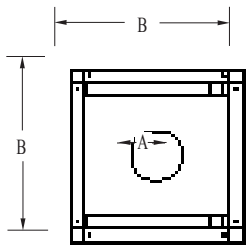
Round Bucket Supports

Size	Stock #	Order #	A	B
3"-4"	3GVRS4	340	7"	14 1/4" - 22 1/4"
5"-6"	5GVRS6	342	8"	14 1/4" - 22 1/4"
7"-8"	7GVRS8	344	10"	14 1/4" - 22 1/4"

 With adjustable legs.

Square Firestop Supports

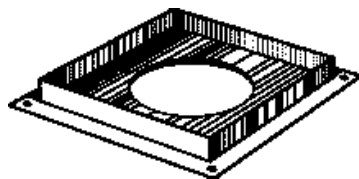
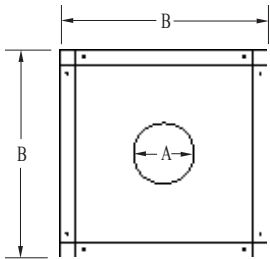
Size	Stock #	Order #	A	B
3"	3GVRS	1440	3 3/4"	9 1/4"
4"	4GVRS	1441	4 3/4"	11 7/8"
5"	5GVRS	1442	5 3/4"	11"
6"	6GVRS	1443	6 3/4"	11"
7"	7GVRS	1444	7 3/4"	13"
8"	8GVRS	1445	8 7/8"	13"
10"	10GVRS	1446	11 3/8"	15"
12"	12GVRS	1447	13"	16"



Straps extend 16 inches.

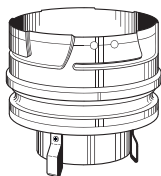
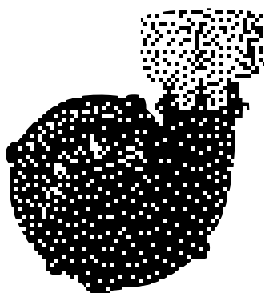
Firestop Spacers

Size	Stock #	Order #	A	B
3"	3GVFS	1460	3 3/4"	9 1/4"
4"	4GVFS	1461	4 3/4"	9 1/4"
5"	5GVFS	1462	5 3/4"	11"
6"	6GVFS	1463	6 3/4"	11"
7"	7GVFS	1464	7 3/4"	13"
8"	8GVFS	1465	8 3/4"	13"
10"	10GVFS	1466	13 3/16"	15"
12"	12GVFS	1467	13 3/16"	17 1/2"

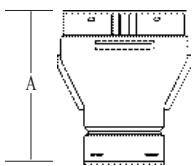
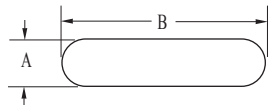
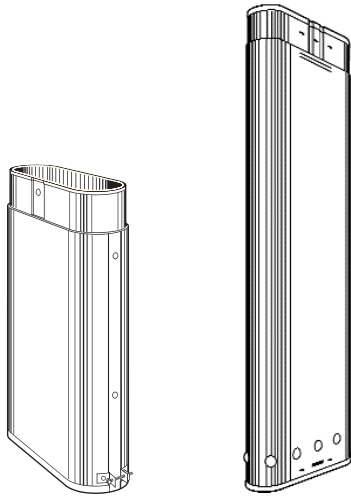


R/R Double Wall Adapters

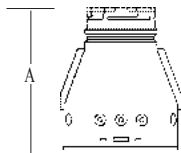
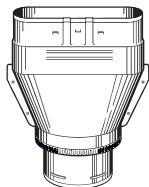
Size	Stock #	Order #
3"	3GVRRRA3	186C
3" - 4"	3GVRRRA4	187C
3" - 5"	3GVRRRA5	188C
4"	4GVRRRA4	177C
4" - 5"	4GVRRRA5	178C
4" - 6"	4GVRRRA6	179C



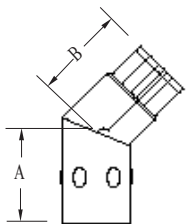
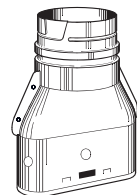
R/R Double Wall Furnace Adapter, UL approved adapter clips snugly to plastic blower housing with stainless steel clips that makes installation a SNAP! Simply twist-lock male end and quickly install Simpson Dura-Vent gas vent or Dura/Connect to complete your installation.



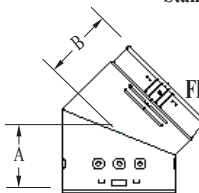
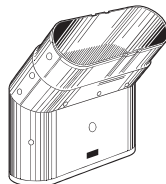
Round to Oval



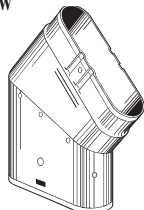
Oval to Round



Standard Elbow



Flat Elbow



4" Oval Pipes 2 x 4 Installation

Length	Stock #	Order #	A	B
5'	4GW60	300	2 5/8"	7 3/8"
4'	4GW48	301	2 5/8"	7 3/8"
3'	4GW36	302	2 5/8"	7 3/8"
2'	4GW24	307	2 1/2"	7 3/8"
18"	4GW18	303	2 3/4"	7 3/8"
12"	4GW12	304	2 3/4"	7 3/8"
6"	4GW06	305	2 3/4"	7 3/8"

5" Oval Pipes 2 x 4 Installation

Length	Stock #	Order #	A	B
5"	5GW60	500	3"	11 7/8"
4'	5GW48	501	3"	11 7/8"
3'	5GW36	502	3"	11 7/8"
2'	5GW24	507	3"	10 3/4"
18"	5GW18	503	3 1/4"	10 7/8"
12"	5GW12	504	3 1/4"	11 7/8"
6"	5GW06	505	3 1/4"	11 7/8"

6" Oval Pipes 2 x 6 Installation

Length	Stock #	Order #	A	B
5'	6GW60	600	3 1/4"	12 1/4"
4'	6GW48	601	3 1/4"	12 1/4"
3'	6GW36	602	3 1/4"	12 1/4"
2'	6GW24	607	3 1/4"	12 1/4"
18"	6GW18	603	3 1/4"	12 1/4"
12"	6GW12	604	3 1/8"	12 1/8"
6"	6GW06	605	3 1/8"	12 1/8"

12" Adjustable Oval Pipe Lengths

Size	Stock #	Order #	A	B
4"	4GW12A	306	2 3/4"	6 1/2"
5"	5GW12A	506	2 7/8"	9 3/4"
6"	6GW12A	606	3 1/2"	12"

Adapters-Round to Oval

Size	Stock #	Order #	A
3" to 4"	4GWAR3	324	9 3/8"
4"	4GWAR0	315	9 3/8"
5"	5GWAR0	515-0	9 7/8"
5" to 6"	5GWAR06	515	10"
6"	6GWAR0	615	11 1/2"

Adapters-Oval to Round

Size	Stock #	Order #	A
4"	4GWAOR	314	9 3/8"
5"	5GWAOR	514	9 7/8"
5" to 6"	5GWAOR6	514-0	10"
6"	6GWAOR	614	10"

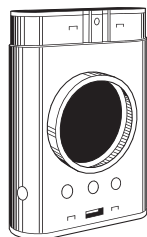
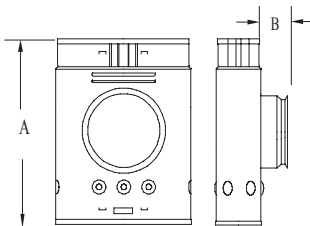
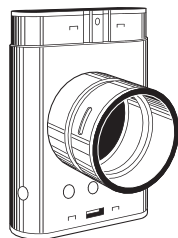
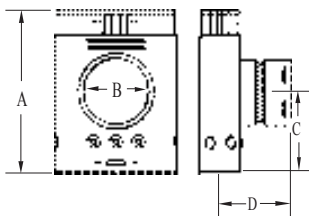
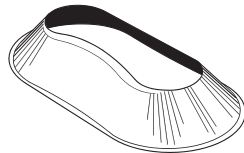
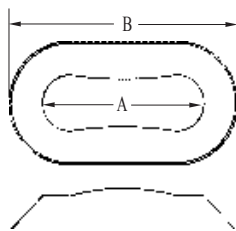
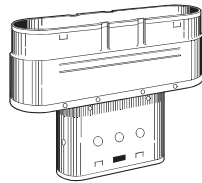
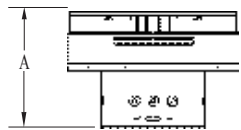
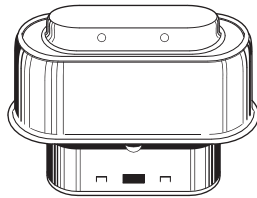
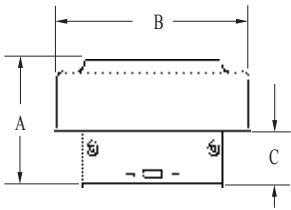
Standard and Flat Oval Elbows

45° Standard Elbows

Size	Stock #	Order #	A	B
4"	4GWL45	310	3 5/8"	3 1/2"
5"	5GWL45	510	4 1/8"	5"
6"	6GWL45	610	5"	3 1/2"

45° Flat Elbows

Size	Stock #	Order #	A	B
4"	4GWL45F	311	4 1/2"	4 1/8"
5"	5GWL45F	511	5 1/4"	5 5/8"
6"	6GWL45F	611	5 3/4"	4 1/4"



DV Additional sizes available.

Oval Vent Tops

Size	Stock #	Order #	A	B	C
4"	4GWVT	316	6 1/8"	9 3/4"	2 1/2"
5"	5GWVT	516	7 3/4"	15 1/4"	3 7/8"
6"	6GWVT	616	7 5/8"	15 1/4"	4"

Oval Increases

Size	Stock #	Order #	A
4" x 5"	4GWX5	419	8 5/8"
5" x 6"	5GWX6	519	8 5/8"
4" x 6"	6GWX6	619	8 5/8"

Oval Storm Collars

Size	Stock #	Order #	A	B
4"	4GWSC	318	7 1/4"	10 1/4"
5"	5GWSC	518	10 3/4"	13 3/8"
6"	6GWSC	618	12"	15"

Oval Tees

Standard Tees

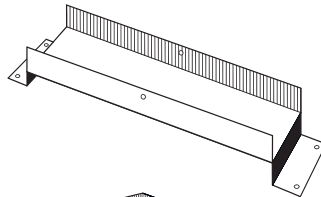
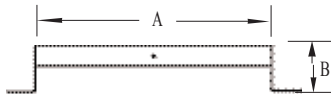
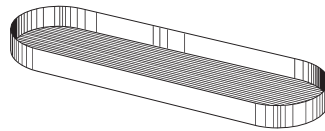
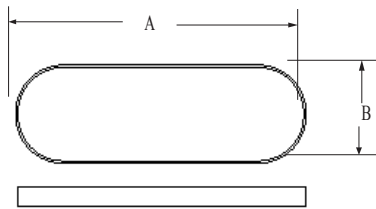
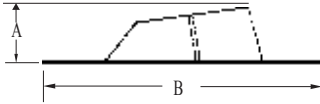
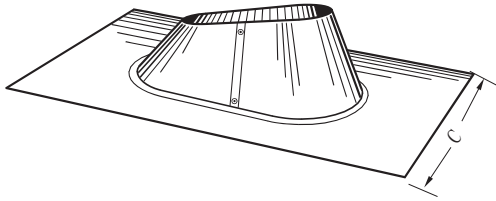
Size	Stock #	Order #	A	B	C	D
4"	4GWT	312	10 1/4"	4"	5"	4 3/4"
5"	5GWT	512	11 3/4"	5"	6 1/4"	5 3/4"
6"	6GWT	612	12 1/8"	6"	6"	5 3/8"

Short Snout Tees

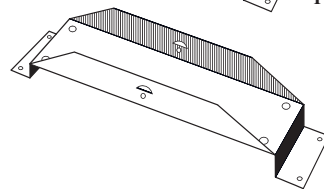
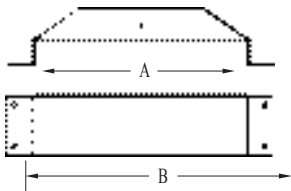
Size	Stock #	Order #	A	B
4"	4GWTST	312ST	8 1/2"	4"

Reduction Tees (not shown)

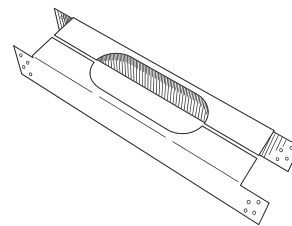
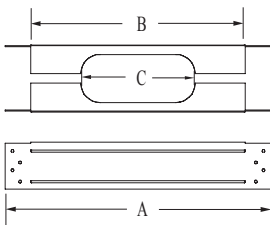
Size	Stock #	Order #	A	B	C	D
4" x 3"	4GWTR3	331	10 1/8"	3"	5"	5 1/2"
5" x 3"	5GWTR3	512T3	11 7/8"	3"	6 1/4"	5 1/4"
5" x 4"	5GWTR4	512T4	11 7/8"	4"	6 1/4"	5 1/4"
6" x 4"	6GWTR4	612T4	12"	4"	6 1/4"	5"
6" x 5"	6GWTR5	612T5	12"	5"	5 3/8"	5 1/2"



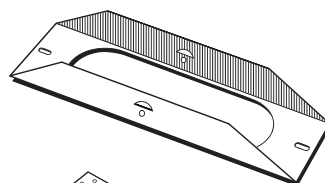
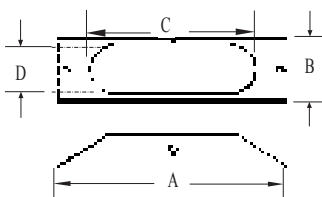
Plain Tee Support



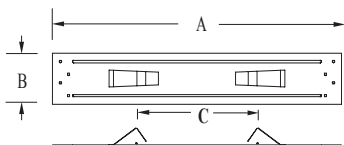
Base Plate Tee Support



Base Plate



Ceiling Plate Spacer



Oval Adjustable Flashings

Size	Stock #	Order #	A	B	C
4"	4GWF	317	3 1/2"	18"	12 1/2"
5"	5GWF	517	7 3/4"	25 1/2"	17 1/2"
6"	6GWF	617	7 3/16"	25 1/2"	17 1/2"

Oval DSA Flashings

Size	Order #	A	B	C
4"	317DS	3 3/4"	28 1/2"	23 1/2"
5"	517DS	3 1/2"	36"	27"
6"	617DS	4"	28"	25 3/4"

DV Accommodates 0/12 - 6/12 roof pitches.

Oval Tee Caps

Size	Stock #	Order #	A	B
4"	4GWTC	313	6 7/8"	2"
5"	5GWTC	513	10 3/8"	2 3/4"
6"	6GWTC	613	11 1/2"	2 3/4"

Plain Tee Supports

Size	Stock #	Order #	A	B
5"	5GWTS	521	13 7/8"	2 1/8"
6"	6GWTS	621	13 3/4"	2 1/2"

Base Plate Tee Supports

4"	4GWPS	308	9 5/8"	11 7/8"
----	-------	-----	--------	---------

Oval Firestop Spacers

Size	Stock #	Order #	A	B	C
4"	4GWFS	350	17 1/2"	14 1/4"	7 1/2"
4"	4GWFS2x6	351	17 1/2"	14 1/4"	7 1/2"
5"	5GWFS	522	17 1/2"	14 1/4"	11"
6"	6GWFS	622	17 1/2"	14 1/4"	12 1/8"

Oval Base Plates

Base Plates

Size	Stock #	Order #	A	B	C	D
4"	4GWBP	321	9 5/8"	2 3/8"	6 7/8"	2"

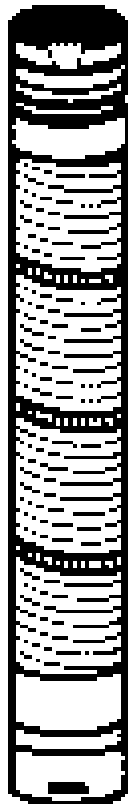
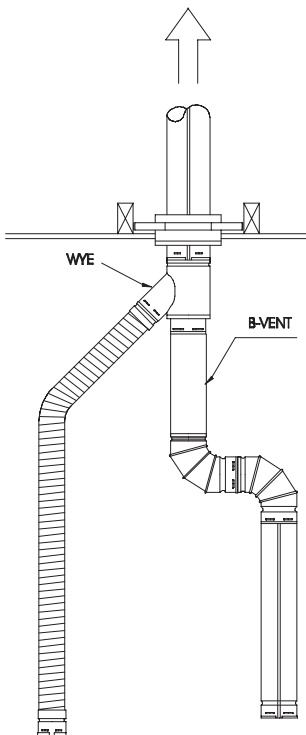
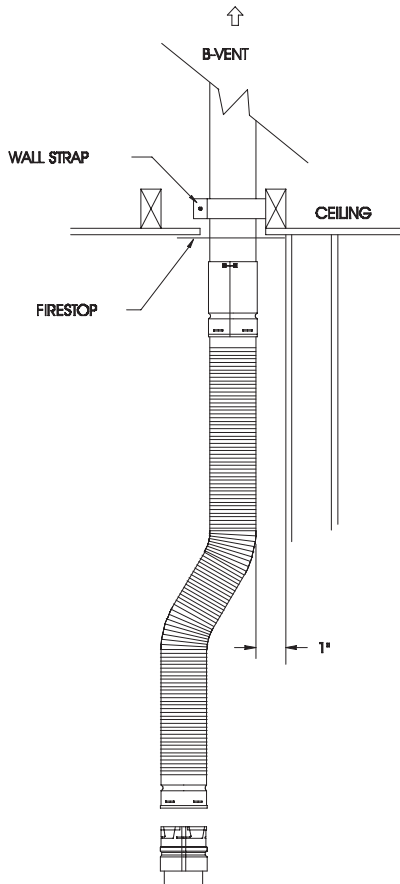
Ceiling Plate Spacers

4"	4GWCS	320	17 1/2"	3"	7"
----	-------	-----	---------	----	----

BW Installation Kits

4"	4GWK	319	2 piece kit includes number 320 and 321			
----	------	-----	---	--	--	--

Dura/Connect Single Wall Connector



Dura/Connect is a flexible heavy-duty aluminum connector that replaces single wall galvanized connectors. Dura/Connect - the fast simple connection for gas furnaces and water heaters.

Flexible vent pipe is easily installed with twist-lock connectors that can reduce labor costs up to 80%. Dura/Connect is UL listed for 1" clearance to combustibles. One to five foot lengths eliminates need for cutting, fitting and fastening that is required with galvanized connector pipe. Dura/Connect also eliminates the need for elbows.

Simpson Dura/Connect was the first single wall connector tested and listed by Underwriters Laboratories to meet all the requirements of the National Fuel Gas Code, ANSI Z223. NFPA 54, NFPA 211, and Uniform Mechanical Codes. Dura/Connect is approved by ICBO, BOCA, and SBCCI and is offered with a ten year warranty

US Patent number 5165732.

3" Diameter - od 3⁵/₈"

Length	Stock #	Order #
5'	3DV60	6001
4'	3DV48	6002
3'	3DV36	6003
2'	3DV24	6004
12"	3DV12	6006

4" Diameter - od 4⁵/₈"

Length	Stock #	Order #
5'	4DV60	6101
4'	4DV48	6102
3'	4DV36	6103
2'	4DV24	6104
12"	4DV12	6106

5" Diameter - od 5⁵/₈"

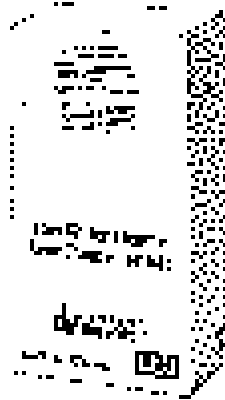
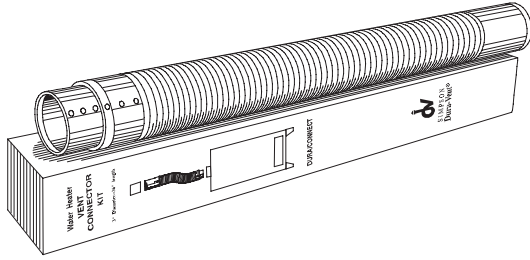
Length	Stock #	Order #
5'	5DV60	6201
4'	5DV48	6202
3'	5DV36	6203
2'	5DV24	6204
12"	5DV12	6206

6" Diameter - od 6⁵/₈"

Length	Stock #	Order #
5'	6DV60	6301
4'	6DV48	6302
3'	6DV36	6303
2'	6DV24	6304
12"	6DV12	6306

DV 4 inches per foot compression, zero stretch.



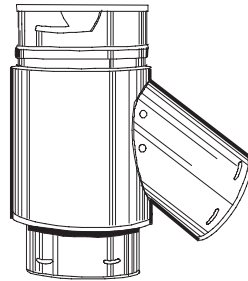
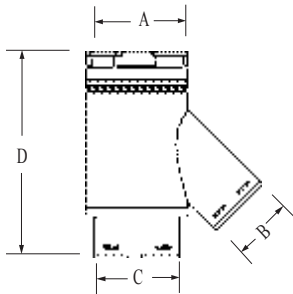


DURA/CONNECT Gas Water Heater Vent Connector Kits

3" x 24" 6061

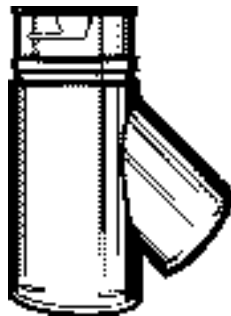
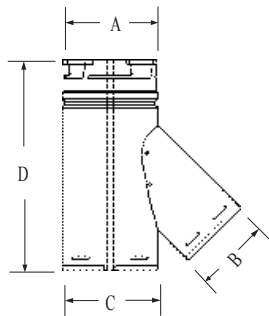
3" x 36" 6062

Water Heater Vent Connector Kits easily adapts to existing Type B gas vent. One piece unit with attached appliance connector and Type B gas vent adapter is available in self-merchandising cartons of six each.



Reduction Y's

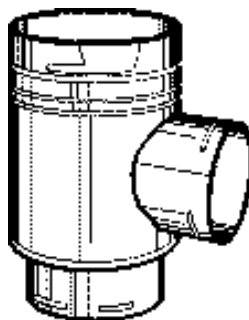
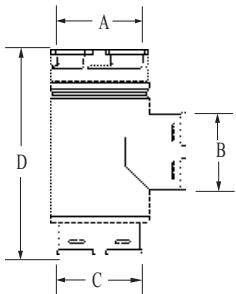
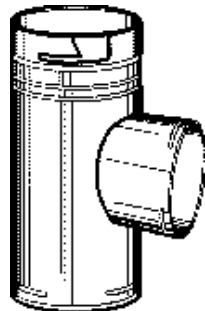
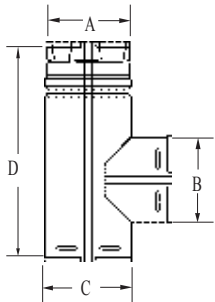
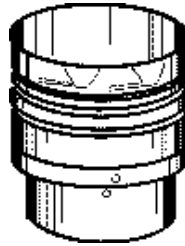
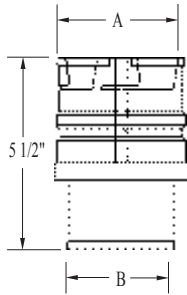
Size	Branch and Base	Stock #	Order #	A	B	C	D
4"	Y w/3" BR at 45°-3" Base	4DVY33	6143	4 5/8"	3 5/8"	3 5/8"	11 1/4"
5"	Y w/3" BR at 45°-4" Base	5DVY34	6243	5 5/8"	3 5/8"	4 5/8"	11 1/4"
	Y w/4" BR at 45°-4" Base	5DVY44	6242	5 5/8"	4 5/8"	4 5/8"	12 5/8"
	Y w/4" BR at 45°-3" Base	5DVY43	6248	5 5/8"	4 5/8"	3 5/8"	13"
6"	Y w/5" BR at 45°-3" Base	5DVY53	6241	5 5/8"	5 5/8"	3 5/8"	14 1/4"
	Y w/3" BR at 45°-4" Base	6DVY34	6344	6 5/8"	3 5/8"	4 5/8"	11 1/4"
	Y w/4" BR at 45°-3" Base	6DVY43	6341	6 5/8"	4 5/8"	3 5/8"	13"
7"	Y w/3" BR at 45°-5" Base	6DVY35	6343	6 5/8"	3 5/8"	5 5/8"	11 1/2"
	Y w/4" BR at 45°-5" Base	6DVY45	6342	6 5/8"	4 5/8"	5 5/8"	13"
	Y w/5" BR at 45°-5" Base	7DVY35	6446	7 5/8"	3 5/8"	5 5/8"	11 1/4"
7"	Y w/4" BR at 45°-5" Base	7DVY45	6447	7 5/8"	4 5/8"	5 5/8"	13"
	Y w/5" BR at 45°-5" Base	7DVY55	6448	7 5/8"	5 5/8"	5 5/8"	14 1/4"
	Y w/5" BR at 45°-3" Base	7DVY53	6445	7 5/8"	5 5/8"	3 5/8"	14 1/4"
7"	Y w/3" BR at 45°-6" Base	7DVY36	6449	7 5/8"	3 5/8"	6 5/8"	11 1/4"



Standard Y's

Size	Branch and Base	Stock #	Order #	A	B	C	D
3"	Y w/3" BR at 45°	3DVY	6045	3 1/2"	3 5/8"	3 5/8"	10 1/2"
4"	Y w/3" BR at 45°	4DVY3	6146	4 1/2"	3 5/8"	4 5/8"	10 1/2"
	Y w/4" BR at 45°	4DVY4	6145	4 1/2"	4 5/8"	4 5/8"	11 3/4"
5"	Y w/3" BR at 45°	5DVY3	6247	5 1/2"	3 5/8"	5 5/8"	10 1/2"
	Y w/5" BR at 45°	5DVY	6245	5 1/2"	5 5/8"	5 5/8"	13 1/4"
6"	Y w/3" BR at 45°	6DVY3	6348	6 1/2"	3 5/8"	6 5/8"	10 1/2"
	Y w/6" BR at 45°	6DVY	6345	6 1/2"	6 5/8"	6 5/8"	14 3/4"

Dura/Connect Single Wall Connector



Appliance Connectors

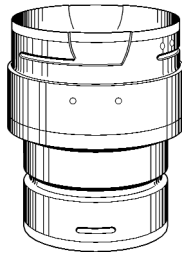
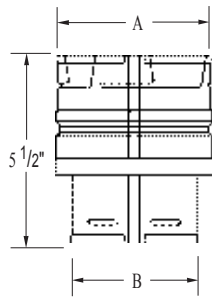
Size	Stock #	Order #	A	B
3"	3DVC	6070	3 1/2"	3"
4"	4DVC	6170	4 1/2"	4"
5"	5DVC	6270	5 1/2"	5"
6"	6DVC	6370	6 1/2"	6"

Standard Tees with 90° Branches

Size	Branch and Base	Stock #	Order #	A	B	C	D
3"	Tee w/3" BR at 90°	3DVT	6090	3 1/2"	3 5/8"	3 5/8"	9"
4"	Tee w/3" BR at 90°	4DVT3	6191	4 1/2"	3 5/8"	4 5/8"	10 1/2"
	Tee w/4" BR at 90°	4DVT	6190	4 1/2"	4 5/8"	4 5/8"	10 1/2"
5"	Tee w/3" BR at 90°	5DVT3	6292	5 1/2"	3 5/8"	5 5/8"	9"
	Tee w/4" BR at 90°	5DVT4	6291	5 1/2"	4 5/8"	5 5/8"	10"
	Tee w/5" BR at 90°	5DVT	6290	5 1/2"	5 5/8"	5 5/8"	12"
6"	Tee w/3" BR at 90°	6DVT3	6393	6 1/2"	3 5/8"	6 5/8"	9"
	Tee w/4" BR at 90°	6DVT4	6392	6 1/2"	4 5/8"	6 5/8"	10"
	Tee w/5" BR at 90°	6DVT5	6391	6 1/2"	5 5/8"	6 5/8"	11"
	Tee w/6" BR at 90°	6DVT	6390	6 1/2"	6 5/8"	6 5/8"	12"

Reduction Tees

Size	Branch and Base	Stock #	Order #	A	B	C	D
5"	Tee w/4" BR-3" Base	5DVT43	6293	5 1/2"	4 5/8"	3 5/8"	10 1/4"
	Tee w/3" BR-4" Base	5DVT34	6294	5 1/2"	3 5/8"	4 5/8"	9 1/4"
6"	Tee w/3" BR-4" Base	6DVT34	6395	6 1/2"	3 5/8"	4 5/8"	9 1/4"
	Tee w/4" BR-4" Base	6DVT44	6396	6 1/2"	4 5/8"	4 5/8"	10 1/4"
	Tee w/3" BR-5" Base	6DVT35	6397	6 1/2"	3 5/8"	5 5/8"	9 1/4"



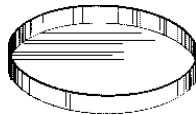
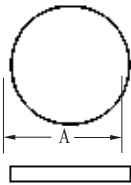
Increasers

Size	Stock #	Order #	A	B
3" x 4"	3DVX4	6010	4 1/2"	3 5/8"
3" x 5"	3DVX5	6011	5 1/2"	3 5/8"
3" x 6"	3DVX6	6012	6 1/2"	3 5/8"
4" x 5"	4DVX5	6110	5 1/2"	4 5/8"
4" x 6"	4DVX6	6111	6 1/2"	4 5/8"
4" x 7"	4DVX7	6112	7 1/2"	4 5/8"
5" x 6"	5DVX6	6210	6 1/2"	5 5/8"
5" x 7"	5DVX7	6211	7 1/2"	5 5/8"
6" x 7"	6DVX7	6310	7 1/2"	6 5/8"

To connect Dura/Connect with existing Type B gas vent use Female Adapter from page 10.

Tee Caps

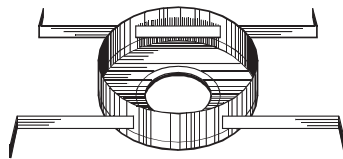
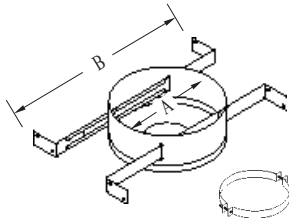
Size	Stock #	Order #	A
3"	3DVTC	6051	3 5/8"
4"	4DVTC	6151	4 5/8"
5"	5DVTC	6251	5 5/8"
6"	6DVTC	6351	6 5/8"



Round Supports

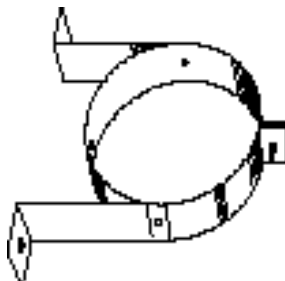
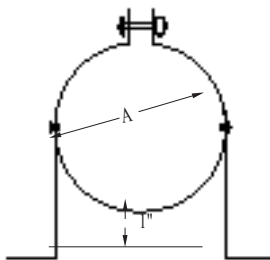
Size	Stock #	Order #	A	B
3"	3DVRS	6020	7	13 1/2" - 23*
4"	4DVRS	6120	7	13 1/2" - 23*
5"	5DVRS	6220	8	13 1/2" - 23*
6"	6DVRS	6320	8	13 1/2" - 23*
7"	7DVRS	6420	10	13 1/2" - 23*

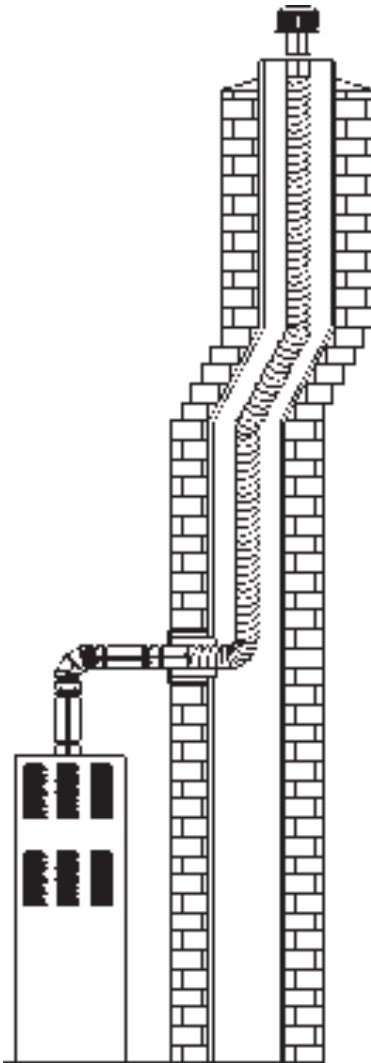
Adjustable legs.



Wall Straps

Size	Stock #	Order #	A
3"	3GVWS	1485	3 5/8"
4"	4GVWS	1486	4 5/8"
5"	5GVWS	1487	5 5/8"
6"	6GVWS	1488	6 5/8"
7"	7GVWS	1489	7 5/8"
8"	8GVWS	1490	8 5/8"



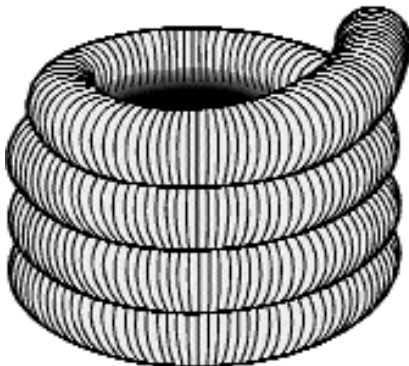


Fast, easy to install, flexible gas relining systems for safe, dependable venting of gas appliances and gas fireplace inserts

DuraFlex is a single wall flexible system that provides a properly sized masonry chimney liner. DuraFlex ensures an optimum draft and condensation-free performance when installed in warm masonry chimneys that are enclosed within the building on all four sides. Available in 5, 15, 25 and 35 foot flexible relining lengths. The light weight .010" thick aluminum flex heats up rapidly to minimize condensation, while providing a watertight conduit that protects both the masonry chimney and inside walls and ceiling from condensate damage.

For external masonry chimneys typically exposed on one or more sides to cold outdoor conditions, or for an exposed portion of the masonry chimney above the roofline, Simpson Dura-Vent provides the option of combining DuraFlex with double wall insulated Type B gas vent. This option is recommended for all near condensing Category I fan assisted furnaces.

DuraFlex Kits



KIT CONTAINS: Termination cap, universal/adaptor, flex connector, mortar sleeve, flashing and flex length

3" Diameter

Size	Order #
3" x 15'	2200
3" x 25'	2210
3" x 35'	2220

5" Diameter

Size	Order #
5" x 15'	2202
5" x 25'	2212
5" x 35'	2222

6" Diameter

Size	Order #
6" x 15'	2203
6" x 25'	2213
6" x 35'	2223

4" Diameter

Size	Order #
4" x 15'	2201
4" x 25'	2211
4" x 35'	2221

5 1/2" Diameter

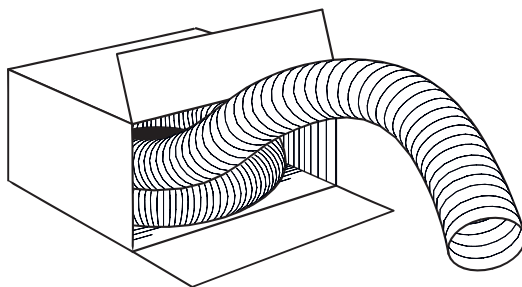
Size	Order #
5 1/2" x 15'	2206
5 1/2" x 25'	2216
5 1/2" x 35'	2226

7" Diameter

Size	Order #
7" x 15'	2204
7" x 25'	2214
7" x 35'	2224

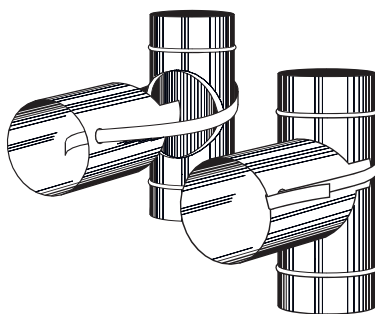
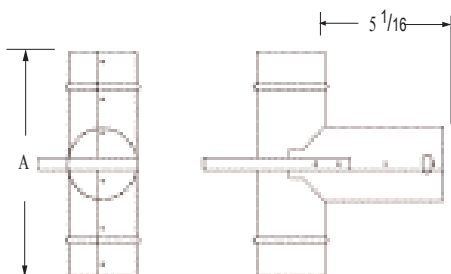
8" Diameter

Size	Order #
8" x 15'	2205
8" x 25'	2215
8" x 35'	2225



DuraFlex Extensions

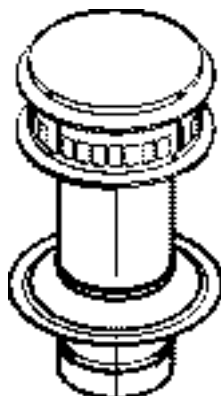
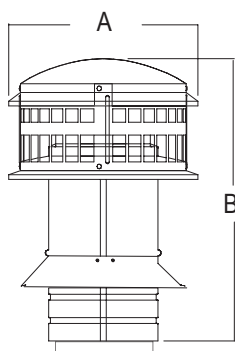
Size	Order #
3" x 5'	2250
3" x 35'	2280
4" x 5'	2251
4" x 35'	2281
5" x 5'	2252
5" x 35'	2282
5 1/2" x 5'	2256
5 1/2" x 35'	2286
6" x 5'	2253
6" x 35'	2283
7" x 5'	2254
7" x 35'	2284
8" x 5'	2255
8" x 35'	2285



NOTE: For common venting, combine two tees.

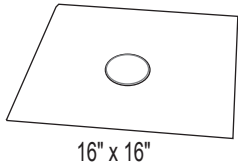
DuraFlex Tee with Removable Branch

Size	Order #	A
3"	2160	9 7/16"
4"	2161	9 7/16"
5"	2162	11 3/4"
5 1/2"	2166	11 3/4"
6"	2163	11 3/4"
7"	2164	13 3/4"
8"	2165	13 3/4"



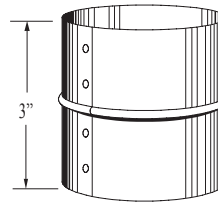
Cap Assembly

Size	Order #	A	B
3"	2230	8"	11 9/16"
4"	2231	8"	11 9/16"
5"	2232	11"	13 1/16"
5 1/2"	2236	11"	13 1/16"
6"	2233	11"	13 1/16"
7"	2234	15"	13 11/16"
8"	2235	15"	13 11/16"



Flashing Cover 16" x 16"

Size	Order #
3"	2100
4"	2101
5"	2102
5 1/2"	2106
6"	2103
7"	2104
8"	2105



Universal Adapter/ Flex Connector

Size	Order #
3"	2150
4"	2151
5"	2152
5 1/2"	2156
6"	2153
7"	2154
8"	2155

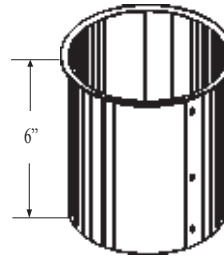
Gas fireplace and/or single wall adapter.



5' Length Flex Relinings

Size	Stock #	Order #
4"	4GV60F	2F
5"	5GV60F	3F
6"	6GV60F	4F

DV 5 foot Flex Relining is used for offsets when relining with Dura-Vent Type B gas vent. Add 5/8" for OD.

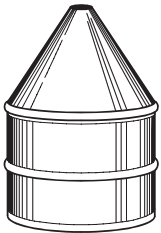


Mortar Sleeves

Size	Order #
3"	2140
4"	2141
5"	2142
5 1/2"	2146
6"	2143
7"	2144
8"	2145

Flex Pullers

Size	Order #
3"	2190
4"	2191
5"	2192
6"	2193
7"	2194
8"	2195



Type B gas vent Masonry Relining Termination Kit includes: DuraCap termination, storm collar, clamp and base.

Masonry Relining Termination Kits

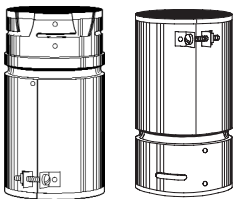
Size	Stock #	Order #
3"	460A	3GVKA
3"	460B	3GVKB
4"	461A	4GVKA
4"	461B	4GVKB
5"	462A	5GVKA
5"	462B	5GVKB
6"	463A	6GVKA
6"	463B	6GVKB

Order numbers ending in A, base plate is 13" x 13".
Order numbers ending in B, base plate is 13" x 18"

DV Only way to terminate Type B gas vent reline jobs.

Male/Female Adapters

Size	Female Order #	Male Order #
3"	2120	490
4"	2121	491
5"	2122	492
6"	2123	493
7"	2124	2127
8"	2125	2128



Male Female

Use to attach DuraFlex relining to round Type B gas vent.

ITEM	CLEARANCE TO COMBUSTIBLES	MAXIMUM HEIGHT	OUTER TUBE DIAMETER	MATERIALS	LOCKING DEVICE	UL LISTING NUMBER
Type B Vent Round 3"- 8"	1 inch	100 feet	5/8" larger than ID	Inner - Aluminum Outer-Galvanized	Twist-Lock	MH6357
Round 10" to 16" See notes 2 & 5	1 inch	100 feet	1" larger than ID	Inner - Aluminum Outer-Galvanized	Twist-Lock	MH6357
Round 18" to 30"	1 inch	100 feet	2" larger than ID See note 5	Inner - Aluminum Outer-Galvanized	Screws	MH6357
Oval Type B vent 4" and 5"	2" x 4" & 2" x 6" stud wall and 1inch in others	See note 3	2 1/2" x 7' 4" 3 1/8" x 12"	Inner - Aluminum Outer-Galvanized	Button Lock	MH6357
Oval 6"	2 x 6 stud wall and 1 inch	See note 3	3 1/4" x 12"	Inner - Aluminum Outer-Galvanized	Button Lock	MH6357
Type B Vent 3" to 6" Round Liner	Masonry/ 0" / 0"	50 feet	5/8" larger than ID	Inner - Aluminum Outer-Galvanized	Twist-Lock	MH14420 MH6357
DuraFlex Gas Relining 3" to 6"	0"/Masonry	50 feet	1/4" larger than ID	Aluminum Flex	Screws Twist-Lock	MH14420
Dura/Connect 3" to 6"	1 inch	See note 4	1/4" larger than ID	Aluminum Flex Galvalume	Twist-Lock	MH14089

NOTES

1. Clearance to combustibles is the air space between vent and combustibles.
2. Maximum height varies with equipment over 50', for taller applications refer to SDV sizing handbook.
3. When oval is used on wall furnaces, minimum height required from base to cap is 12', minimum 16" stud space.
4. Limited by capacity tables.
5. 18" pipe OD is one inch larger than ID and 20" - 30" OD is 2" greater than ID.

Rules for Safe Venting of Gas Appliances

Proper gas venting should perform the following functions to insure safe and dependable operation of the appliance

1. Safely vent all of the hot combustion gases to the outside atmosphere.
2. Prevent overheating of nearby walls or framing.
3. Control condensation of water vapor present in combustion gasses.
4. Provide fast priming of the unit.

The amount of heat the vent gases lose as they flow determines how much condensation will occur and how strong the draft will be. To control the heat losses, proper selection of venting materials is of vital importance.

Type B double wall gas vent, with an aluminum inner wall and a galvanized steel outer wall, has proven to be the ideal choice in venting materials.

Vent Termination Table

Gas Vent systems using vent caps listed by Underwriter's Laboratories may terminate in accordance with this table

Roof Pitch	Minimum Height	
	Feet	Meters
Flat to 7/12	1.0	0.30
Over 7/12 to 8/12	1.5	0.46
Over 8/12 to 9/12	2.0	0.61
Over 9/12 to 10/12	2.5	0.76
Over 10/12 to 11/12	3.25	0.99
Over 11/12 to 12/12	4.0	1.22
Over 12/12 to 14/12	5.0	1.52
Over 14/12 to 16/12	6.0	1.83
Over 16/12 to 18/12	7.0	2.13
Over 18/12 to 20/12	7.5	2.29
Over 20/12 to 21/12	8.0	2.44

SIMPSON

Dura-Vent

WARRANTIES

25 YEAR WARRANTY

SIMPSON Dura-Vent warrants the following products: Type B Gas Vent, All-Fuel Class A Chimney (Dura/Plus and Dura-Chimney), Close Clearance Connector Pipe (DVL), Stainless Steel Chimney Liner (Dura/Liner) and Pellet Vent for a period of twenty-five years from the date of installation. Warranty includes component fittings, except rain caps which are covered for five years from date of installation.

10 YEAR WARRANTY

SIMPSON Dura-Vent warrants Dura/Connect pipe and fittings for a period of ten years from the date of installation. Corrosion that results from contaminated intake air, due to storage of corrosive agents such as laundry bleach, paint solvents, etc. near the appliance, is excluded from coverage under this warranty.

SIMPSON Dura-Vent warrants DuraFlex products for a period of ten years from the date of installation. Warranty includes component fittings, except cap assembly, which is covered for five years from date of installation.

SIMPSON Dura-Vent warrants Direct Vent pipe and fittings for a period of ten years from the date of installation.

SIMPSON Dura-Vent warrants Dura-Black Drip Free Stovepipe for a period of five years from the date of the installation.

All warranties, whether expressed or implied, shall be limited to the replacement (exclusive of installation costs) of pipe lengths and components found to be defective under this warranty, and shall be conditional upon compliance with the manufacturer's recommended installation and maintenance procedures and intended use of the product. All products must be maintained by periodic inspection and cleaning as needed, including chimney exposed to weather containing corrosive elements.

TERMS

- 2% 10th, NET 30 days.
- 1¹/₂% interest per month on overdue accounts.
- Different multiplier may apply. Consult your program for appropriate multiplier.
- Allow 10 working days for shipment.
- All prices are subject to change without notice.
- All orders will be invoiced at prices in effect at date of shipment.
- Ten percent (10%) charge for broken cartons.
- All palletized shrink wrapped orders are an additional \$5 per pallet

COMPANY POLICY

CREDIT POLICY - All new customers must be pre-qualified by our Credit Department to ensure their ability to handle desired purchases. All new customers must submit three references with credit histories and limits equal to the credit amounts requested from Simpson Dura-Vent. Customers must remain current to receive shipments.

SHIPMENTS - All orders are shipped complete, unless specifically requested by the customer. Discounts earned by a total order prevail even if a customer requests partial shipment. Freight terms are applied separately to each part of an order when a request for a partial shipment is made by the customer. All discounts and terms must be approved in advance by the sales department.

RETURNS - Company policy states that all sales are final. When damages occur during transit, customers are advised and instructed to contact the transportation company in establishing claims for shortage, loss or damage. Customers will be credited for defective parts not related to shipping damage in accordance with Simpson Dura-Vent's terms and conditions in effect at the time of the claim. Please contact our Customer Service Department for further information.

Help us help you, call our

**CUSTOMER SERVICE
C E N T E R**

800-835-4429

707-446-4740 FAX

Other Quality

Dura-Vent Systems:

Direct Vent GS®

Direct vent for gas stoves

Dura/Plus®

All fuel triple wall vent

DVL® Connector

Close clearance connector double wall vent

Dura-Black® Stovepipe

Single wall black stovepipe

Dura/Liner®

All fuel chimney relining

Pellet Vent®

Pellet vent systems

Dura-Vent is a registered trademark of SIMPSON Dura-Vent Co., Inc.,

Direct Vent GS, Dura/Plus, DVL, Dura/Liner, Dura-Black, Pellet Vent, Dura/Connect, and DuraFlex are registered trademarks of SIMPSON Dura-Vent Co., Inc.,

All rights reserved
©Copyright 1999 - SIMPSON Dura-Vent Co., Inc.



Direct Vent GS

**Additional professional
SIMPSON Dura-Vent products:**

GAS VENT systems

DIRECT VENT GS®

Direct vent systems for direct vent appliances



**Dura/Plus, DVL Close Clearance
Connector, Dura-Black stovepipe**



Pellet Vent

ALL FUEL systems

DURA/PLUS® - 2100° HT triple wall
chimney vent for all fuel products

DVL® - Close Clearance Connector
- Double wall close clearance connector

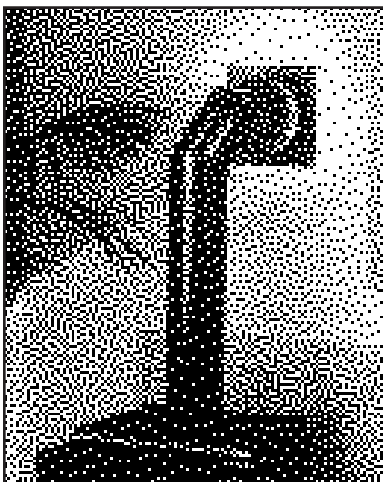
DURA-BLACK® - Single wall stovepipe

PELLET VENT® - Pellet vent systems
for pellet vent appliances

DURA/LINER® - Single and double wall
masonry relining systems for all fuel



**Dura/Liner, single and double
wall masonry reliner for all fuel**



**Designer Series pipes
and covers**

ACCESSORIES

Designer Series - Decorative pipe
covers and trim kits for Pellet Vent, Dura/Plus
Chimney and gas vent products



**Designer Series pipes
and covers**

SIMPSON

Dura-Vent®

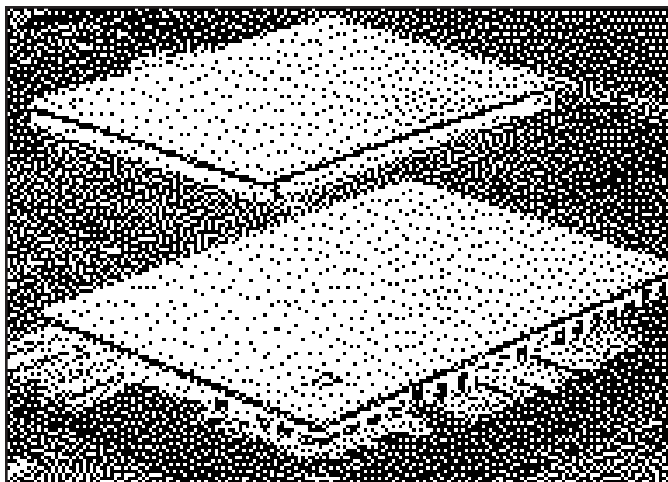
THE COMPANY

For over 40 years, the Dura-Vent Company has been a leading manufacturer of Gas Vent and Chimney products. In 1982, Dura-Vent was purchased by Simpson Manufacturing, the innovative market leader, manufacturing Simpson Strong-Tie metal connectors and joist hangers. In 1994 Simpson Manufacturing became a public company, trading on the New York Stock Exchange (Symbol: SSD).



ENGINEERED EXCELLENCE

Since 1982, Simpson Dura-Vent has become recognized as the technological leader in the venting industry. The precision twist-lock design and rugged quality of our Type B gas vent system has rapidly become the contractor's choice. Consistently, the first to market with new innovations in quality venting systems, Dura-Vent has captured a leadership position in emerging markets such as flexible vent connectors for water heaters and furnaces and venting systems for direct vent appliances. Simpson Dura-Vent is committed to providing the industry with a continuous stream of new products and refinements to existing products, that meet the demands of today's heating products market.

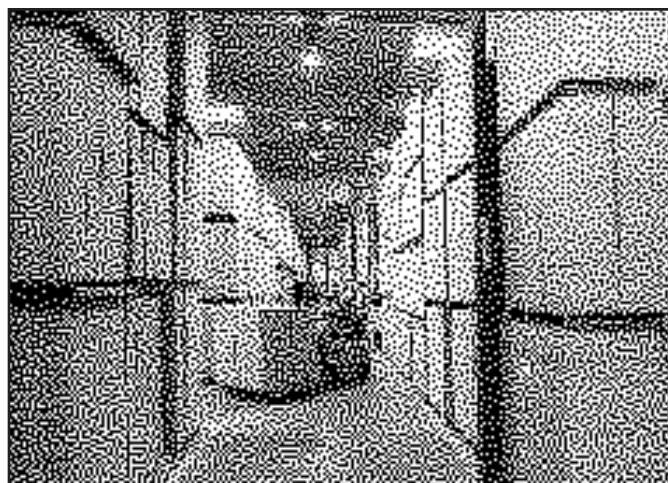


MANUFACTURING

Each year Simpson Dura-Vent invests millions of dollars in machinery, tooling, manufacturing facilities, and world-class manufacturing technology in order to provide unequaled quality and service. All of Simpson Dura-Vent's products are exclusively American made. Manufacturing facilities are located in Vacaville, California and Vicksburg, Mississippi. There is also a service warehouse in Southern California. Simpson Dura-Vent's skilled work force, combined with state-of-the-art machinery, is dedicated to providing consistent quality and service that exceeds industry standards.

CUSTOMER SERVICE

Simpson Dura-Vent's customer service department's commitment to excellence is backed up with a computer system that provides immediate answers on product availability, lead times, and shipping schedules. Our engineering staff is available to answer your technical questions, assist in proper sizing, and to provide solutions to your venting problems. At Simpson Dura-Vent, getting product to the job site complete and on time is of utmost importance. We invest heavily in finished product inventory so that our distributors will be in a position to provide their customers with superior product availability and service.



Gas Vent Systems

Round Pipe Lengths	6
Adjustable Pipe Lengths	7
Elbows	7
Tees	8
Tee Caps	8
Reduction Tees	8
Vent Tops	9
Combo Roof Caps	9
Storm Collars	9
Female Adapters	10
Male Adapters	10
Wall Straps	10
Swivel Adapters	10
Double Wall Y's with 45°	11
Roof Top Termination Kits	11
Pipe Collars	11
Flashings	12
Increasesers	13
Wall Thimbles	13
Draft Hood Connectors	13
Round Bucket Supports	14
Square Firestop Supports	14
Firestop Spacers	14
R/R Adapters	14
Oval Pipe Lengths	15
Oval Pipe Adjustable Lengths	15
Adapters Round to Oval	15
Adapters Oval to Round	15
Oval Elbows	15
Oval Increasesers	16
Oval Vent Tops	16
Oval Storm Collars	16
Oval Tees	16
Oval Flashings	17
Oval Tee Caps	17
Oval Plain Tee Supports	17
Oval Firestop Spacers	17
Oval Base Plates	17

Dura/Connect Single Wall

Dura/Connect Flexible Lengths	18
Water Heater Vent Connector Kits	19
Reduction and Standard Y's	19
Appliance Connectors	20
Standard Tees	20
Reduction Tees	20
Increasesers	21
Tee Caps	21
Round Supports	21
Wall Straps	21

DuraFlex Relinings

DuraFlex Kits	22
Extensions	23
Tees with Removable Branch	23
Cap Assembly	23
Flashing Covers	24
Universal Adapters / Flex Connectors	24
Mortar Sleeves	24
Flex Pullers	24
Flex Relinings	24
Masonry Relining Termination Kits	24
Male and Female Adapters	24

Gas Vent Product Information

Gas Vent Charts	25
-----------------------	----

SDV Company Policy

Warranties	26
Terms	26
Company Policy	26
Customer Service Center	26

These products are listed by
UNDERWRITERS
LABORATORIES INC.
and bear the mark:



ENGINEERED EXCELLENCE



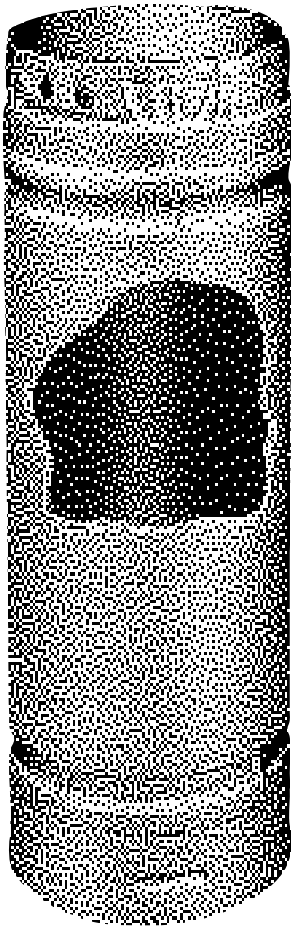
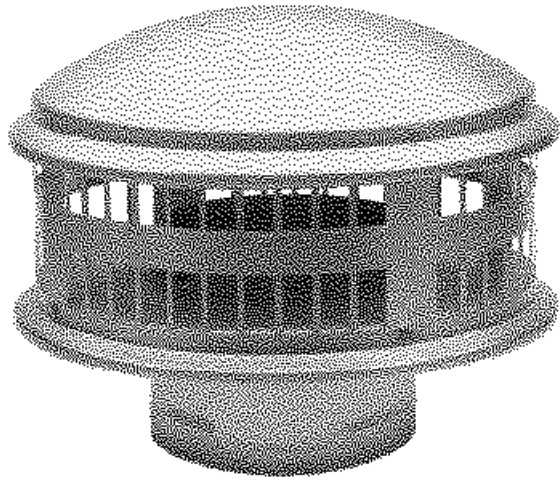
*Professional gas
venting systems and
accessories*

Gas Vent
Type B Double Wall Vent

Dura/Connect®
Gas Single Wall Connector

DuraFlex®
Gas Masonry Relining

SIMPSON DURA-VENT



TWIST-LOCK CONNECTIONS

The Simpson Dura-Vent Type B gas vent system features our “no equal” twist-lock connections. Precision swaged fittings offer the contractor a superior positive-lock connection that is fast and easy to assemble. When necessary, the system may also be disconnected without damage to the product.

HEAVY-DUTY CONSTRUCTION

Simpson Dura-Vent Type B gas vent has been designed to meet the rugged demands of the job site. To resist damage or ovalizing, inverse beads and hemmed edges have been designed into both ends of the vent pipe to provide for superior structural rigidity. Hemmed edges also serve to eliminate cuts from raw sheet metal edges. The inner liner is recessed to eliminate damage in handling.

ENGINEERED FOR PERFORMANCE

Simpson Dura-Vent Type B gas vent has been engineered for optimum vent performance. The twist-lock design eliminates the need for perforations in the outer walls, as is common with snap-lock type systems. Inverted beads on each end of the pipe seal the air space between the inner and outer walls, providing superior insulating characteristics. Engineered to heat up rapidly and remain hot during the operation of the appliance, Simpson Dura-Vent Type B gas vent is the contractor's choice for minimizing the effects of condensation on the appliance and vent system.

THE CONTRACTOR'S CHOICE!

QUALITY GAS VENT SYSTEMS

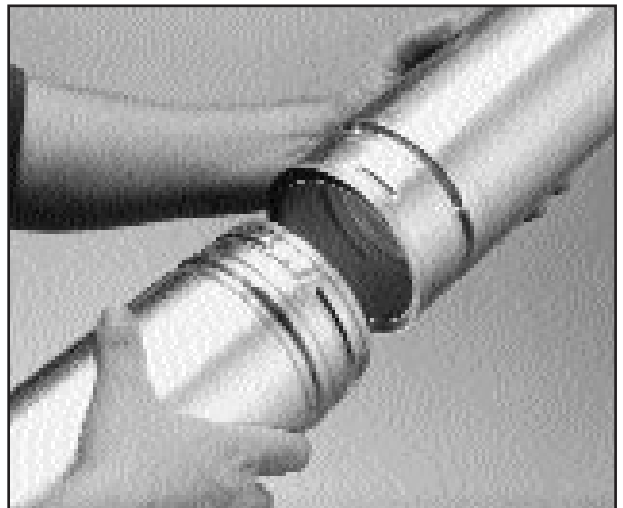


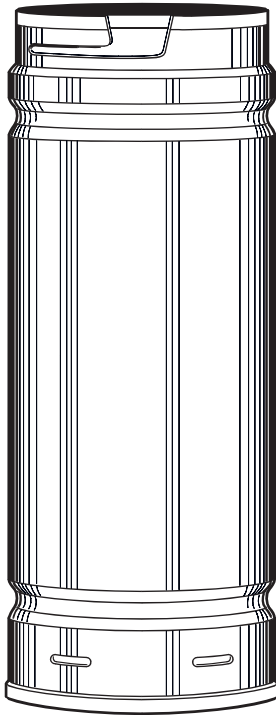
Simpson Dura-Vent offers superior quality in round, oval, and flexible gas vent systems. The Dura-Vent gas vent system supports enhanced performance of gas appliances. Many of the vent features provide installation safety and additional handling strength to create one of the highest quality gas vent products available. Pipe lengths are available in multiple lengths of 1 to 5 feet with a full complement of rigid and adjustable fittings. No cutting or special fabrication is ever necessary. Professional vent for the professional installer.

COMPLETE PRODUCT OFFERING

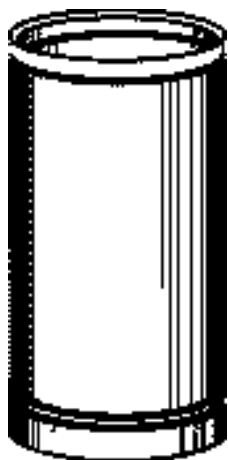
Simpson Dura-Vent Type B gas vent is available in round sizes 3 to 30 inches. Oval "BW" vent is available in sizes 4, 5, and 6 inches. Dura/Connect flexible vent connectors are available in 3, 4, 5, and 6 inch sizes. DuraFlex gas relining systems are available in 3, 4, 5, 5½, 6, and 7 inch sizes. All product lines are offered with a complete line of fittings for every conceivable application. Simpson Dura-Vent products are made in the United States and are available through a nationwide network of distributors and dealers.

Dura-Vent gas vent
pipe and accessories
assemble quickly with twist-
lock connections





3-16"



18-30"

3" Diameter - od 3 5/8"

Length	Stock #	Order #
5'	3GV60	1
4'	3GV48	400
3'	3GV36	10
2'	3GV24	385
18"	3GV18	20
12"	3GV12	30
6"	3GV06	40

4" Diameter - od 4 5/8"

Length	Stock #	Order #
5'	4GV60	2
4'	4GV48	401
3'	4GV36	11
2'	4GV24	386
18"	4GV18	21
12"	4GV12	31
6"	4GV06	41

5" Diameter - od 5 5/8"

Length	Stock #	Order #
5'	5GV60	3
4'	5GV48	402
3'	5GV36	12
2'	5GV24	387
18"	5GV18	22
12"	5GV12	32
6"	5GV06	42

6" Diameter - od 6 5/8"

Length	Stock #	Order #
5'	6GV60	4
4'	6GV48	403
3'	6GV36	13
2'	6GV24	388
18"	6GV18	23
12"	6GV12	33
6"	6GV06	43

7" Diameter - od 7 5/8"

Length	Stock #	Order #
5'	7GV60	5
4'	7GV48	404
3'	7GV36	14
2'	7GV24	389
18"	7GV18	24
12"	7GV12	34
6"	7GV06	44

8" Diameter - od 8 5/8"

Length	Stock #	Order #
5'	8GV60	6
4'	8GV48	405
3'	8GV36	15
2'	8GV24	390
18"	8GV18	25
12"	8GV12	35

10" Diameter - od 11"

Length	Stock #	Order #
3'	10GV36	16
18"	10GV18	26

12" Diameter - od 13"

Length	Stock #	Order #
3'	12GV36	17
18"	12GV18	27

14" Diameter - od 15"

Length	Stock #	Order #
3'	14GV36	200
18"	14GV18	220

16" Diameter - od 17"

Length	Stock #	Order #
3'	16GV36	201
18"	16GV18	221

18" Diameter - od 20"

Length	Stock #	Order #
3'	18GV36	202
18"	18GV18	222

20" Diameter - od 22"

Length	Stock #	Order #
3'	20GV36	203
18"	20GV18	223

22" Diameter - od 24"

Length	Stock #	Order #
3'	22GV36	204
18"	22GV18	224

24" Diameter - od 26"

Length	Stock #	Order #
3'	24GV36	205
18"	24GV18	225

26" Diameter - od 28"

Length	Stock #	Order #
3'	26GV36	206
18"	26GV18	226

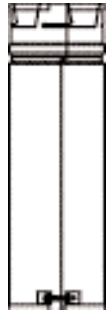
28" Diameter - od 30"

Length	Stock #	Order #
3'	28GV36	207
18"	28GV18	227

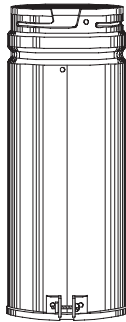
30" Diameter - od 32"

Length	Stock #	Order #
3'	30GV36	208
18"	30GV18	228

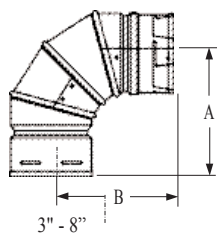
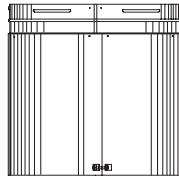
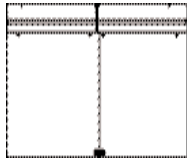
NOTE: All items 14" and larger are considered special made and as such, are non-cancelable and non-returnable.



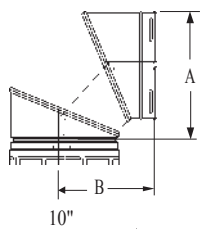
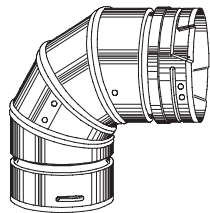
3-16"



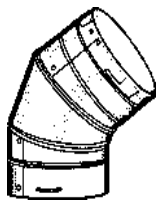
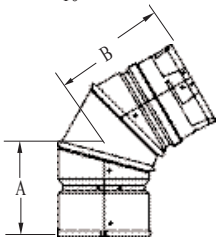
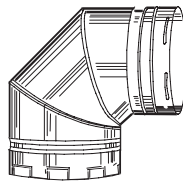
18-30"



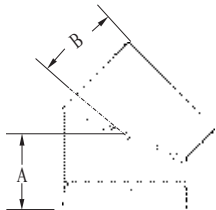
3" - 8"



10"



3-8"



18-30"

Dimensions shown at 45° position

12" Adjustable Lengths

Size	Stock #	Order #
3"	3GV12A	50
4"	4GV12A	51
5"	5GV12A	52
6"	6GV12A	53
7"	7GV12A	54
8"	8GV12A	55
10"	10GV12A	56
12"	12GV12A	57
14"	14GV18A	370
16"	16GV18A	371

dv Adds 2 1/2 to 11 1/2" to system length.

18" Adjustable Lengths

Size	Stock #	Order #
18"	18GV18A	372
20"	20GV18A	373
22"	22GV18A	374
24"	24GV18A	375
26"	26GV18A	376
28"	28GV18A	377
30"	30GV18A	378

dv Adds 2 1/2 to 16 1/2" to system length.

90° Adjustable Elbows

Size	Stock #	Order #	A	B
3"	3GVL90	60	5 1/2"	5 1/2"
4"	4GVL90	61	6	6
5"	5GVL90	62	6 1/2	6 1/2
6"	6GVL90	63	6 7/8	6 7/8
7"	7GVL90	64	8 1/2	8 7/8
8"	8GVL90	65	8 7/8	8 5/8
10"	10GVL90	66	9 5/8	9 5/8

45/60° Adjustable Elbows

Size	Stock #	Order #	A	B
3"	3GVL45	70	4 1/4"	4"
4"	4GVL45	71	4 1/2	4 1/2
5"	5GVL45	72	4 1/2	4 1/2
6"	6GVL45	73	5	5

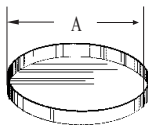
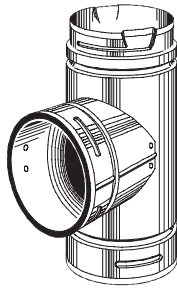
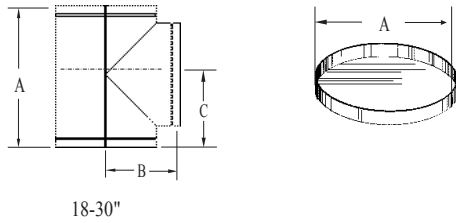
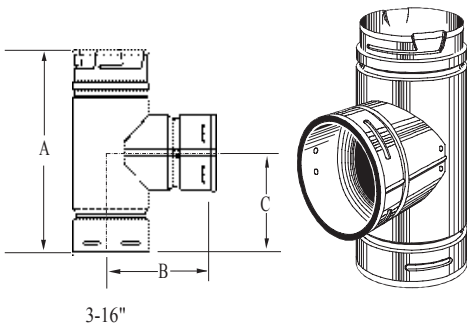
45° Elbows

Size	Stock #	Order #	A	B
7"	7GVL45	74	6 1/2"	6 1/4"
8"	8GVL45	75	6 1/2	6 1/2
10"	10GVL45	76	5 3/4	5 3/4
12"	12GVL45	77	6 1/8	6 1/4
14"	14GVL45	250	6 1/2	6 7/8
16"	16GVL45	251	7 1/4	7 1/4
18"	18GVL45	252	8 1/4	10
20"	20GVL45	253	8 3/8	9 7/8
22"	22GVL45	254	8 1/2	9 3/4
24"	24GVL45	255	8 7/8	9 3/4
26"	26GVL45	256	9	10 1/4
28"	28GVL45	257	9	10 1/4
30"	30GVL45	258	9 1/2	10 3/4

dv 45/60° 3 piece design in 3" to 8" sizes.

dv 90° 4 piece design in 3" to 8" and 3 piece design in 10".

dv Up to 10" elbows are adjustable, sizes 12" and larger are not adjustable.

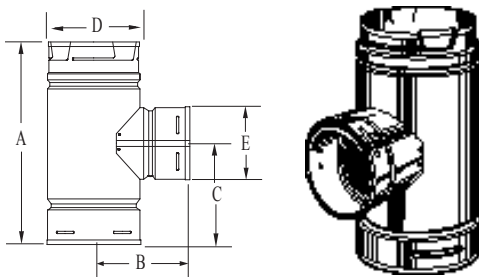


Standard Tees

Size	Stock #	Order #	A	B	C
3"	3GVT	80	9 1/4"	4 1/2"	4 5/8"
4"	4GVT	81	10 1/4"	4 7/8"	5 1/8"
5"	5GVT	82	11"	5 5/8"	5 1/2"
6"	6GVT	83	12 1/4"	5 7/8"	6 1/8"
7"	7GVT	84	13 1/4"	6 3/4"	6 5/8"
8"	8GVT	85	14 1/2"	7 3/8"	7 1/4"
10"	10GVT	86	17 1/8"	8 1/2"	8 1/2"
12"	12GVT	87	19 3/4"	10"	9 3/8"
14"	14GVT	240	20 7/8"	11"	10 1/2"
16"	16GVT	241	25"	12 1/2"	12 1/2"
18"	18GVT	242	29"	15"	15"
20"	20GVT	243	32"	16"	16"
22"	22GVT	244	33"	17"	17"
24"	24GVT	245	35"	18"	18"
26"	26GVT	246	35 1/2"	18 1/2"	17 3/4"
28"	28GVT	247	36"	19"	18 1/2"
30"	30GVT	248	41 1/2"	20 1/2"	20 3/4"

Tee Caps

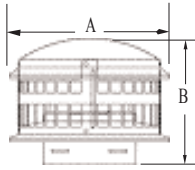
A	Stock #	Order #
3"	3GVTC	90
4"	4GVTC	91
5"	5GVTC	92
6"	6GVTC	93
7"	7GVTC	94
8"	8GVTC	95
10"	10GVTC	96
12"	12GVTC	97
14"	14GVTC	290
16"	16GVTC	291
18"	18GVTC	292
20"	20GVTC	293
22"	22GVTC	294
24"	24GVTC	295
26"	26GVTC	296
28"	28GVTC	297
30"	30GVTC	298



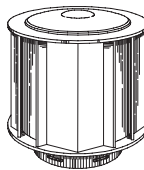
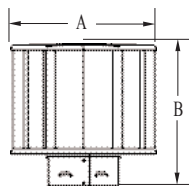
Reduction Tees

Size	Stock #	Order #	A	B	C	D	E
4"x 3"	4GVTR3	81T3	9 1/8"	5 1/4"	4 5/8"	4 5/8"	3 5/8"
5"x 4"	5GVTR4	82T4	10"	5 3/4"	5"	5 5/8"	4 5/8"
5"x 3"	5GVTR3	82T3	9 1/8"	5 9/16"	4 5/8"	5 5/8"	3 5/8"
6"x 4"	6GVTR4	83T4	9 7/8"	6 1/2"	5 1/2"	6 5/8"	4 5/8"
6"x 3"	6GVTR3	83T3	9 1/8"	6 1/2"	4 5/8"	6 5/8"	3 5/8"

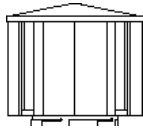
dv Other sizes available upon request.



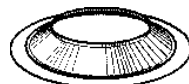
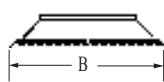
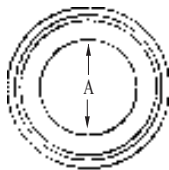
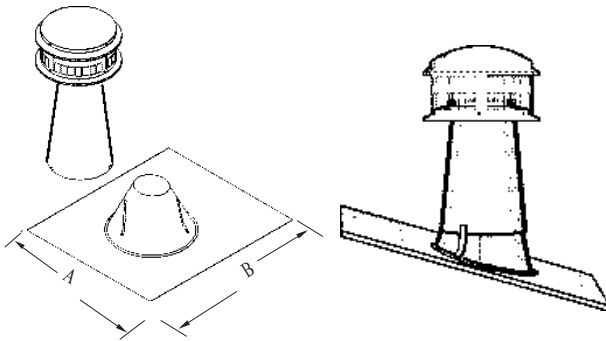
3-8" DuraCap Vent Top



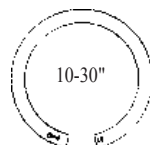
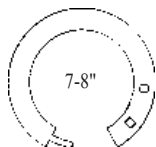
3-8" High Wind Vent Top



10-18" High Wind Vent Top 20-30"



3-6"



DuraCap Vent Tops

Size	Stock #	Order #	A	B
3"	3GVDC	630	8"	5 3/4"
4"	4GVDC	631	8	5 3/4
5"	5GVDC	632	11	7 1/4
6"	6GVDC	633	11	7 1/4
7"	7GVDC	634	15	8
8"	8GVDC	635	15	8

High Wind Vent Tops

Size	Stock #	Order #	A	B
3"	3GVVTH	130	7 1/2"	7 1/4"
4"	4GVVTH	131	8 1/2	8 1/4
5"	5GVVTH	132	9 1/2	9 3/8
6"	6GVVTH	133	10 1/2	9 1/4
7"	7GVVTH	134	11 1/2	11 3/4
8"	8GVVTH	135	12 1/2	12 3/4
10"	10GVVT	136	17 1/2	16
12"	12GVVT	137	19 1/4	18 3/4
14"	14GVVT	260	24	17 1/2

Size	Stock #	Order #	A	B
16"	16GVVT	261	26"	19 1/2"
18"	18GVVT	262	30	21 1/2
20"	20GVVT	263	34	23 1/2
22"	22GVVT	264	36	25 1/2
24"	24GVVT	265	39	27 1/2
26"	26GVVT	266	44	29 1/2
28"	28GVVT	267	48	31 1/2
30"	30GVVT	268	50	33 1/2

Combo Caps

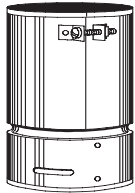
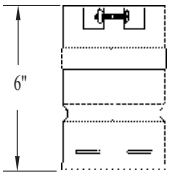
Size	Stock #	Order #	A	B
3"	3GVVTF	360	16"	18 3/8"
4"	4GVVTF	361	17	18 3/8
5"	5GVVTF	362	18 1/4	20
6"	6GVVTF	363	19 1/4	21 1/2

DV Fits 0/12 to 6/12 roof. Caps are UL Listed.

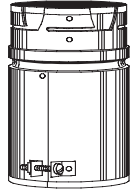
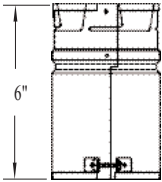
Storm Collars

Size	Stock #	Order #	A	B
3"	3GVSC	150	3 5/8"	7 3/8"
4"	4GVSC	151	4 5/8	8 1/8
5"	5GVSC	152	5 5/8	9 1/8
6"	6GVSC	153	6 5/8	10 5/8
7"	7GVSC	154	7 5/8	11 1/8
8"	8GVSC	155	8 5/8	12 5/8
10"	10GVSC	156	11	15
12"	12GVSC	157	13	17
14"	14GVSC	270	16"	21"

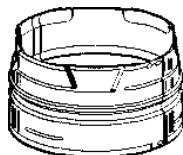
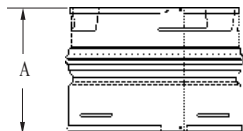
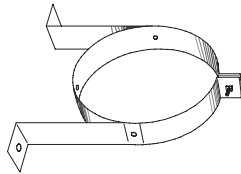
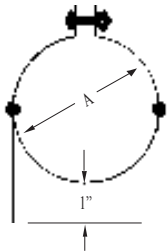
Size	Stock #	Order #	A	B
16"	16GVSC	271	18	23
18"	18GVSC	272	20	25
20"	20GVSC	273	22	27
22"	22GVSC	274	24	29
24"	24GVSC	275	26	31
26"	26GVSC	276	28	33
28"	28GVSC	277	30	35
30"	30GVSC	278	32	37



Female Adapter



Male Adapter



Female Adapters

Size	Stock #	Order #
3"	3GVAF	496
4"	4GVAF	497
5"	5GVAF	498
6"	6GVAF	499

Male Adapters

Size	Stock #	Order #
3"	3GVAM	490
4"	4GVAM	491
5"	5GVAM	492
6"	6GVAM	493

Wall Straps

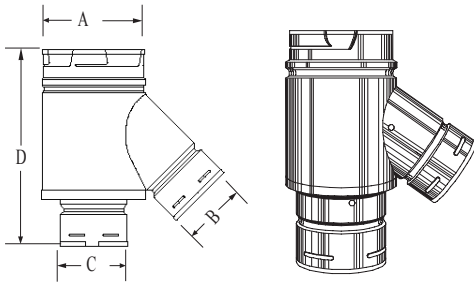
Size	Stock #	Order #	A
3"	3GVWS	1485	3 5/8"
4"	4GVWS	1486	4 5/8"
5"	5GVWS	1487	5 5/8"
6"	6GVWS	1488	6 5/8"
7"	7GVWS	1489	7 5/8"
8"	8GVWS	1490	8 5/8"

DV Wall Straps can also be used with Dura/Connect pipe. 10" B Vent (11" OD) uses 7" Dura/Plus Chimney Wall Strap, stock # 9168.

Swivel Adapters

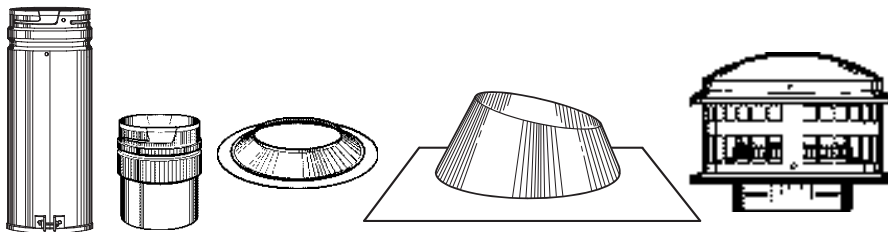
Size	Stock #	Order #	A
3"	3GVSWL	451	4 3/4"
4"	4GVSWL	452	4 3/4"
5"	5GVSWL	453	4 3/4"
6"	6GVSWL	454	4 3/4"
7"	7GVSWL	455	4 3/4"
8"	8GVSWL	456	4 3/4"

Swivel Adapter twist-lock connects to elbow or tee for a 360 degree turn to provide easy connection.



Double Wall Y's with 45° Branch

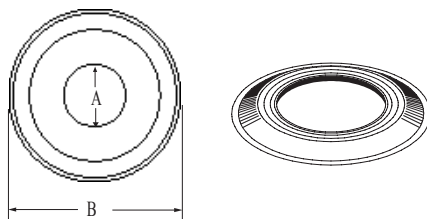
Size	Stock #	Order #	A	B	C	D
4"x4"x3"	4GVY43	425	4 5/8"	4 5/8"	3 5/8"	12 1/4"
4"x4"x4"	4GVY44	426	4 5/8"	4 5/8"	4 5/8"	13 1/4"
4"x3"x4"	4GVY34	427	4 5/8"	3 5/8"	4 5/8"	13 1/4"
5"x3"x4"	5GVY34	430	5 5/8"	3 5/8"	4 5/8"	12 1/4"
5"x4"x4"	5GVY44	431	5 5/8"	4 5/8"	4 5/8"	13 1/4"
6"x3"x4"	6GVY34	440	6 5/8"	3 5/8"	4 5/8"	12 1/4"
6"x4"x3"	6GVY43	441	6 5/8"	4 5/8"	3 5/8"	12 1/4"
6"x4"x4"	6GVY44	442	6 5/8"	4 5/8"	4 5/8"	13 1/4"
6"x4"x5"	6GVY45	443	6 5/8"	4 5/8"	5 5/8"	13 1/4"
6"x3"x5"	6GVY35	445	6 5/8"	3 5/8"	5 5/8"	13 1/4"
7"x3"x5"	7GVY35	450	7 5/8"	3 5/8"	5 5/8"	13 1/4"



Roof Top Termination Kits

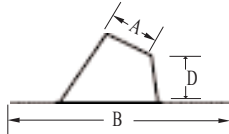
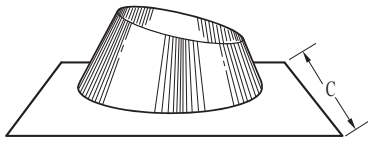
Size	Stock #	Order #
3"	3GVK	470
4"	4GVK	471
5"	5GVK	472

KIT CONTAINS: DuraCap vent top, storm collar, adjustable roof flashing, 12" adjustable length and draft-hood connector.



Pipe Collars

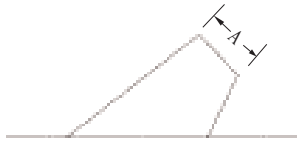
Size	Stock #	Order #	A	B
3"	3GVPC	170	3 3/4"	7"
4"	4GVPC	171	4 3/4"	7 3/4"
5"	5GVPC	172	5 3/4"	8 3/4"
6"	6GVPC	173	6 3/4"	9 3/4"



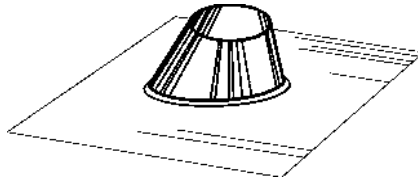
DV Accommodates flat to 6/12 roof pitches.

Adjustable Roof Flashings

Size	Stock #	Order #	A	B	C	14"	14GVF	280	15"	31 1/2"	29 1/2"
3"	3GVF	140	3 5/8"	18 3/8"	16"	16"	16GVF	281	17"	36"	33 1/2"
4"	4GVF	141	4 5/8"	18 3/8"	17"	18"	18GVF	282	20"	43"	40"
5"	5GVF	142	5 5/8"	20"	18 3/8"	20"	20GVF	283	22"	43"	40"
6"	6GVF	143	6 3/4"	21 1/2"	19 1/4"	22"	22GVF	284	24"	45"	41 9/16"
7"	7GVF	144	7 3/4"	22 1/2"	21 1/2"	24"	24GVF	285	26"	45"	44 3/4"
8"	8GVF	145	8 3/4"	23 1/2"	21 1/2"	26"	26GVF	286	28"	44 3/4"	44 3/4"
10"	10GVF	146	11 3/8"	24"	24"	28"	28GVF	287	30"	50"	50"
12"	12GVF	147	13 1/2"	24"	24"	30"	30GVF	288	32"	52"	52"



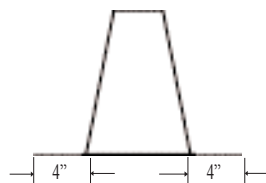
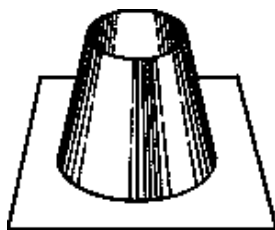
Steep Roof Flashing



DV Accommodates flat to 7/12 to 12/12 roof pitch.

Steep Roof Flashings

Size	Stock #	Order #	A
3"	3GVFSR	140S	3 3/4"
4"	4GVFSR	141S	4 3/4"
5"	5GVFSR	142S	5 3/4"
6"	6GVFSR	143S	6 3/4"
7"	7GVFSR	144S	7 3/4"
8"	8GVFSR	145S	8 3/4"

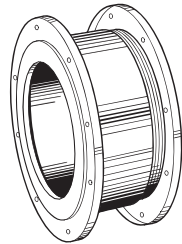
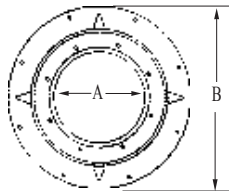
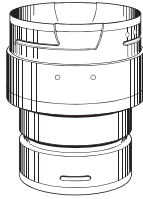
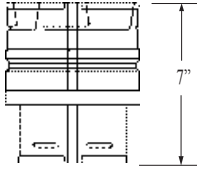


Tall Cone Flashing

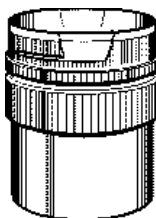
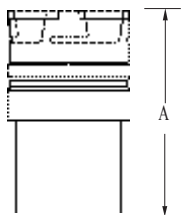
DV For flat roof tops.

Tall Cone Roof Flashings

Size	Stock #	Order #	A	14"	14GVFF	280F	12"
3"	3GVFF	140F	12"	16"	16GVFF	281F	12"
4"	4GVFF	141F	12"	18"	18GVFF	282F	12"
5"	5GVFF	142F	12"	20"	20GVFF	283F	12"
6"	6GVFF	143F	12"	22"	22GVFF	284F	12"
7"	7GVFF	144F	12"	24"	24GVFF	285F	12"
8"	8GVFF	145F	12"	26"	26GVFF	286F	12"
10"	10GVFF	146F	12"	28"	28GVFF	287F	12"
12"	12GVFF	147F	12"	30"	30GVFF	288F	12"



Adjusts out 3 1/2 to 6 inches.



Increasers

Size	Stock #	Order #	7" x 8"	7GVX8	108
3" x 4"	3GVX4	100	8" x 10"	8GVX10	109
3" x 5"	3GVX5	101	8" x 12"	8GVX12	110
3" x 6"	3GVX6	102	10" x 12"	10GVX12	111
3" x 7"	3GVX7	112	** x 14"	**GVX14	209
4" x 5"	4GVX5	103	** x 16"	**GVX16	219
4" x 6"	4GVX6	104	** x 18"	**GVX18	229
4" x 7"	4GVX7	113	** x 20"	**GVX20	239
4" x 8"	4GVX8	116	** x 22"	**GVX22	249
5" x 6"	5GVX6	105	** x 24"	**GVX24	259
5" x 7"	5GVX7	115	** x 26"	**GVX26	269
5" x 8"	5GVX8	117	** x 28"	**GVX28	279
6" x 7"	6GVX7	106	** x 30"	**GVX30	289
6" x 8"	6GVX8	107			

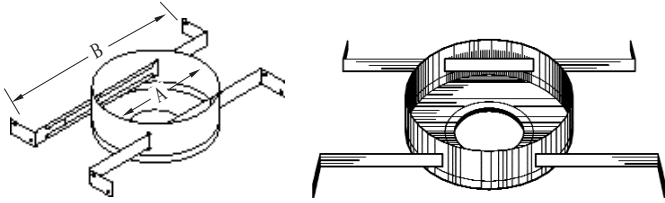
DV Additional sizes available.

Wall Thimbles

Size	Stock #	Order #	A	B
3"	3GVWT	160	3 3/4"	7 1/2"
4"	4GVWT	161	4 3/4"	8 1/2"
5"	5GVWT	162	5 3/4"	9 1/2"
6"	6GVWT	163	6 3/4"	10 1/2"
7"	7GVWT	164	7 3/4"	11 1/2"
8"	8GVWT	165	8 3/4"	12 1/2"

Draft Hood Connectors

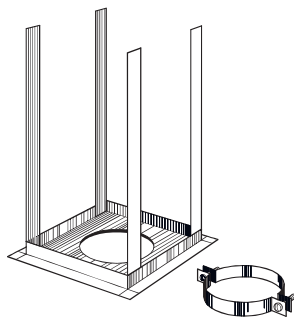
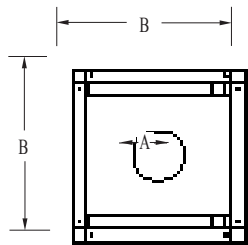
Size	Stock #	Order #	A	14"	14GVC	190	10"
3"	3GVC	120	4 1/2"	16"	16GVC	191	10
4"	4GVC	121	4 1/2"	18"	18GVC	192	12
5"	5GVC	122	4 1/2"	20"	20GVC	193	12
6"	6GVC	123	4 1/2"	22"	22GVC	194	14
7"	7GVC	124	7	24"	24GVC	195	14
8"	8GVC	125	7	26"	26GVC	269	16 1/2
10"	10GVC	126	7	28"	28GVC	279	16 1/2
12"	12GVC	127	7	30"	30GVC	289	16 1/2



Round Bucket Supports

Size	Stock #	Order #	A	B
3"-4"	3GVRS4	340	7"	14 1/4" - 22 1/4"
5"-6"	5GVRS6	342	8"	14 1/4" - 22 1/4"
7"-8"	7GVRS8	344	10"	14 1/4" - 22 1/4"

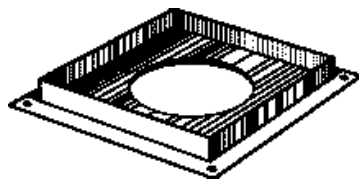
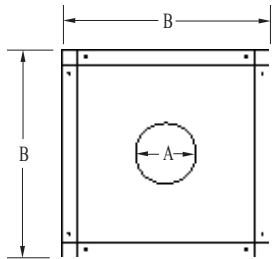
 With adjustable legs.



Straps extend 16 inches.

Square Firestop Supports

Size	Stock #	Order #	A	B
3"	3GVRS	1440	3 3/4"	9 1/4"
4"	4GVRS	1441	4 3/4"	11 7/8"
5"	5GVRS	1442	5 3/4"	11"
6"	6GVRS	1443	6 3/4"	11"
7"	7GVRS	1444	7 3/4"	13"
8"	8GVRS	1445	8 7/8"	13"
10"	10GVRS	1446	11 3/8"	15"
12"	12GVRS	1447	13"	16"

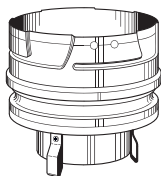
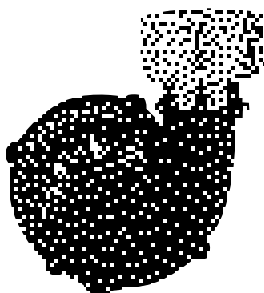


Firestop Spacers

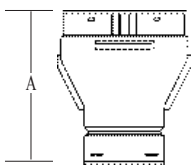
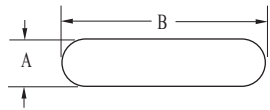
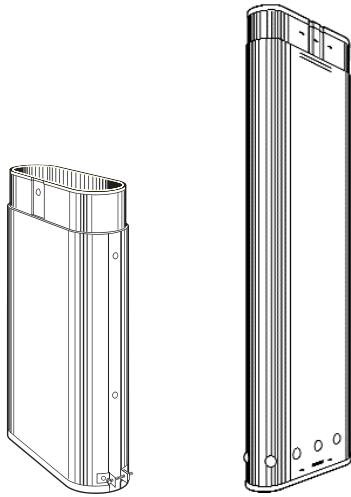
Size	Stock #	Order #	A	B
3"	3GVFS	1460	3 3/4"	9 1/4"
4"	4GVFS	1461	4 3/4"	9 1/4"
5"	5GVFS	1462	5 3/4"	11"
6"	6GVFS	1463	6 3/4"	11"
7"	7GVFS	1464	7 3/4"	13"
8"	8GVFS	1465	8 3/4"	13"
10"	10GVFS	1466	13 3/16"	15"
12"	12GVFS	1467	13 3/16"	17 1/2"

R/R Double Wall Adapters

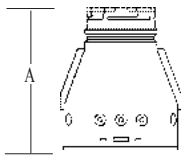
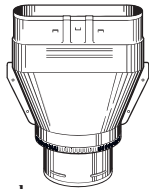
Size	Stock #	Order #
3"	3GVRRRA3	186C
3" - 4"	3GVRRRA4	187C
3" - 5"	3GVRRRA5	188C
4"	4GVRRRA4	177C
4" - 5"	4GVRRRA5	178C
4" - 6"	4GVRRRA6	179C



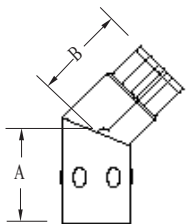
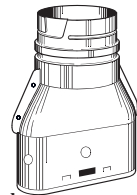
R/R Double Wall Furnace Adapter, UL approved adapter clips snugly to plastic blower housing with stainless steel clips that makes installation a SNAP! Simply twist-lock male end and quickly install Simpson Dura-Vent gas vent or Dura/Connect to complete your installation.



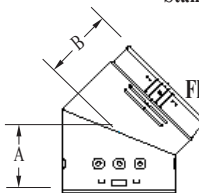
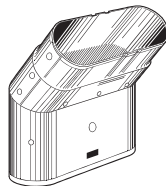
Round to Oval



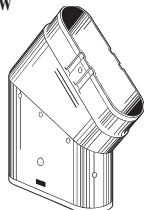
Oval to Round



Standard Elbow



Flat Elbow



4" Oval Pipes 2 x 4 Installation

Length	Stock #	Order #	A	B
5'	4GW60	300	2 5/8"	7 3/8"
4'	4GW48	301	2 5/8"	7 3/8"
3'	4GW36	302	2 5/8"	7 3/8"
2'	4GW24	307	2 1/2"	7 3/8"
18"	4GW18	303	2 3/4"	7 3/8"
12"	4GW12	304	2 3/4"	7 3/8"
6"	4GW06	305	2 3/4"	7 3/8"

5" Oval Pipes 2 x 4 Installation

Length	Stock #	Order #	A	B
5"	5GW60	500	3"	11 7/8"
4'	5GW48	501	3"	11 7/8"
3'	5GW36	502	3"	11 7/8"
2'	5GW24	507	3"	10 3/4"
18"	5GW18	503	3 1/4"	10 7/8"
12"	5GW12	504	3 1/4"	11 7/8"
6"	5GW06	505	3 1/4"	11 7/8"

6" Oval Pipes 2 x 6 Installation

Length	Stock #	Order #	A	B
5'	6GW60	600	3 1/4"	12 1/4"
4'	6GW48	601	3 1/4"	12 1/4"
3'	6GW36	602	3 1/4"	12 1/4"
2'	6GW24	607	3 1/4"	12 1/4"
18"	6GW18	603	3 1/4"	12 1/4"
12"	6GW12	604	3 1/8"	12 1/8"
6"	6GW06	605	3 1/8"	12 1/8"

12" Adjustable Oval Pipe Lengths

Size	Stock #	Order #	A	B
4"	4GW12A	306	2 3/4"	6 1/2"
5"	5GW12A	506	2 7/8"	9 3/4"
6"	6GW12A	606	3 1/2"	12"

Adapters-Round to Oval

Size	Stock #	Order #	A
3" to 4"	4GWAR3	324	9 3/8"
4"	4GWARO	315	9 3/8"
5"	5GWARO	515-0	9 7/8"
5" to 6"	5GWARO6	515	10"
6"	6GWARO	615	11 1/2"

Adapters-Oval to Round

Size	Stock #	Order #	A
4"	4GWAOR	314	9 3/8"
5"	5GWAOR	514	9 7/8"
5" to 6"	5GWAOR6	514-0	10"
6"	6GWAOR	614	10"

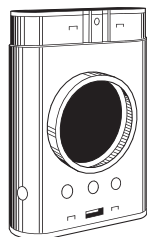
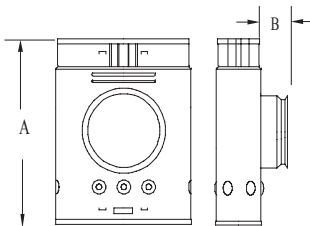
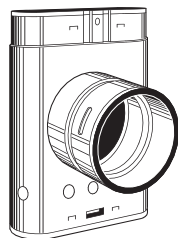
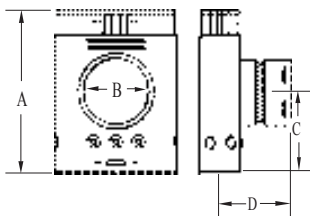
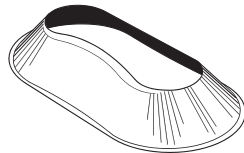
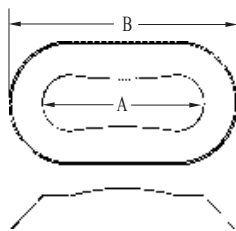
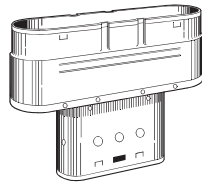
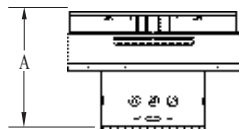
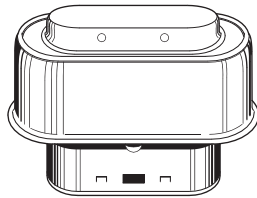
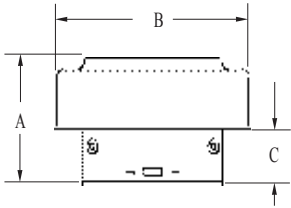
Standard and Flat Oval Elbows

45° Standard Elbows

Size	Stock #	Order #	A	B
4"	4GWL45	310	3 5/8"	3 1/2"
5"	5GWL45	510	4 1/8"	5"
6"	6GWL45	610	5"	3 1/2"

45° Flat Elbows

Size	Stock #	Order #	A	B
4"	4GWL45F	311	4 1/2"	4 1/8"
5"	5GWL45F	511	5 1/4"	5 5/8"
6"	6GWL45F	611	5 3/4"	4 1/4"



DV Additional sizes available.

Oval Vent Tops

Size	Stock #	Order #	A	B	C
4"	4GWVT	316	6 1/8"	9 3/4"	2 1/2"
5"	5GWVT	516	7 3/4"	15 1/4"	3 7/8"
6"	6GWVT	616	7 5/8"	15 1/4"	4"

Oval Increases

Size	Stock #	Order #	A
4" x 5"	4GWX5	419	8 5/8"
5" x 6"	5GWX6	519	8 5/8"
4" x 6"	6GWX6	619	8 5/8"

Oval Storm Collars

Size	Stock #	Order #	A	B
4"	4GWSC	318	7 1/4"	10 1/4"
5"	5GWSC	518	10 3/4"	13 3/8"
6"	6GWSC	618	12"	15"

Oval Tees

Standard Tees

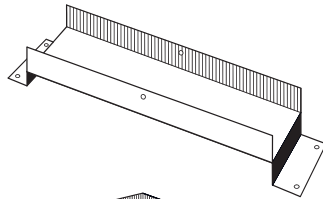
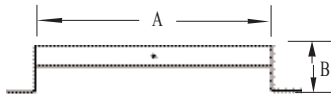
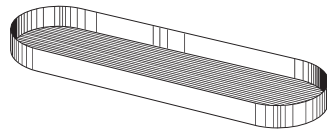
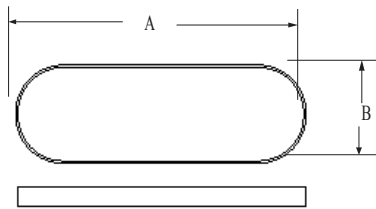
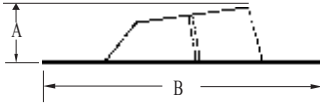
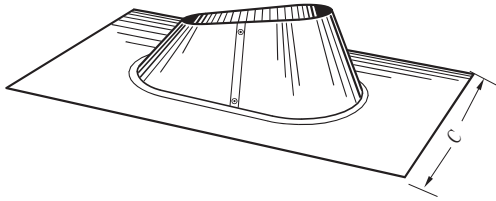
Size	Stock #	Order #	A	B	C	D
4"	4GWT	312	10 1/4"	4"	5"	4 3/4"
5"	5GWT	512	11 3/4"	5"	6 1/4"	5 3/4"
6"	6GWT	612	12 1/8"	6"	6"	5 3/8"

Short Snout Tees

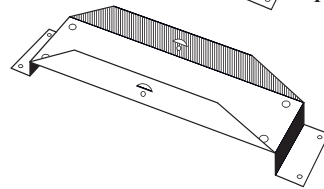
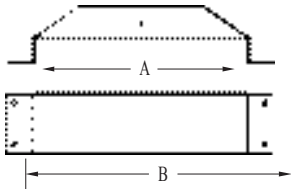
Size	Stock #	Order #	A	B
4"	4GWTST	312ST	8 1/2"	4"

Reduction Tees (not shown)

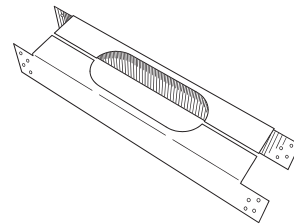
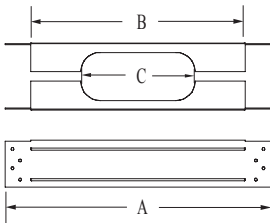
Size	Stock #	Order #	A	B	C	D
4" x 3"	4GWTR3	331	10 1/8"	3"	5"	5 1/2"
5" x 3"	5GWTR3	512T3	11 7/8"	3"	6 1/4"	5 1/4"
5" x 4"	5GWTR4	512T4	11 7/8"	4"	6 1/4"	5 1/4"
6" x 4"	6GWTR4	612T4	12"	4"	6 1/4"	5"
6" x 5"	6GWTR5	612T5	12"	5"	5 3/8"	5 1/2"



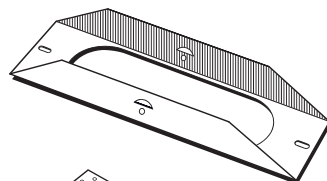
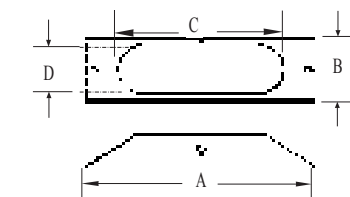
Plain Tee Support



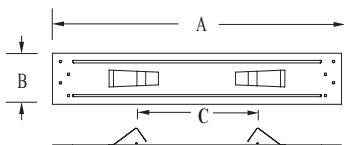
Base Plate Tee Support



Base Plate



Ceiling Plate Spacer



Oval Adjustable Flashings

Size	Stock #	Order #	A	B	C
4"	4GWF	317	3 1/2"	18"	12 1/2"
5"	5GWF	517	7 3/4"	25 1/2"	17 1/2"
6"	6GWF	617	7 3/16"	25 1/2"	17 1/2"

Oval DSA Flashings

Size	Order #	A	B	C
4"	317DS	3 3/4"	28 1/2"	23 1/2"
5"	517DS	3 1/2"	36"	27"
6"	617DS	4"	28"	25 3/4"

DV Accommodates 0/12 - 6/12 roof pitches.

Oval Tee Caps

Size	Stock #	Order #	A	B
4"	4GWTC	313	6 7/8"	2"
5"	5GWTC	513	10 3/8"	2 3/4"
6"	6GWTC	613	11 1/2"	2 3/4"

Plain Tee Supports

Size	Stock #	Order #	A	B
5"	5GWTS	521	13 7/8"	2 1/8"
6"	6GWTS	621	13 3/4"	2 1/2"

Base Plate Tee Supports

4"	4GWPS	308	9 5/8"	11 7/8"
----	-------	-----	--------	---------

Oval Firestop Spacers

Size	Stock #	Order #	A	B	C
4"	4GWFS	350	17 1/2"	14 1/4"	7 1/2"
4"	4GWFS2x6	351	17 1/2"	14 1/4"	7 1/2"
5"	5GWFS	522	17 1/2"	14 1/4"	11"
6"	6GWFS	622	17 1/2"	14 1/4"	12 1/8"

Oval Base Plates

Base Plates

Size	Stock #	Order #	A	B	C	D
4"	4GWBP	321	9 5/8"	2 3/8"	6 7/8"	2"

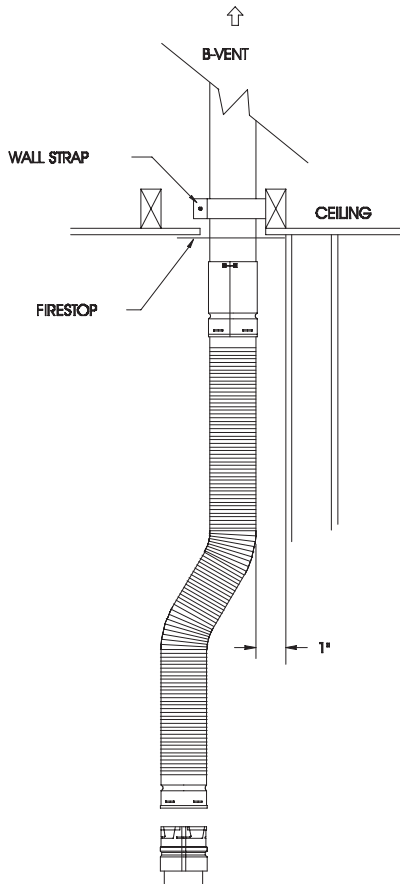
Ceiling Plate Spacers

4"	4GWCS	320	17 1/2"	3"	7"
----	-------	-----	---------	----	----

BW Installation Kits

4"	4GWK	319	2 piece kit includes number 320 and 321			
----	------	-----	---	--	--	--

Dura/Connect Single Wall Connector

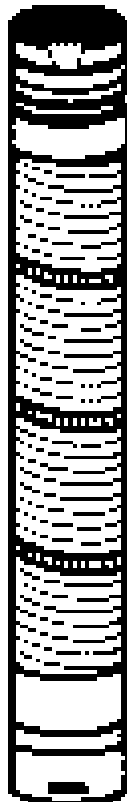
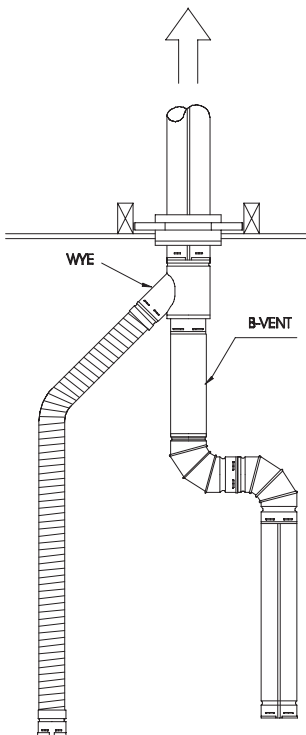


Dura/Connect is a flexible heavy-duty aluminum connector that replaces single wall galvanized connectors. Dura/Connect - the fast simple connection for gas furnaces and water heaters.

Flexible vent pipe is easily installed with twist-lock connectors that can reduce labor costs up to 80%. Dura/Connect is UL listed for 1" clearance to combustibles. One to five foot lengths eliminates need for cutting, fitting and fastening that is required with galvanized connector pipe. Dura/Connect also eliminates the need for elbows.

Simpson Dura/Connect was the first single wall connector tested and listed by Underwriters Laboratories to meet all the requirements of the National Fuel Gas Code, ANSI Z223. NFPA 54, NFPA 211, and Uniform Mechanical Codes. Dura/Connect is approved by ICBO, BOCA, and SBCCI and is offered with a ten year warranty

US Patent number 5165732.



3" Diameter - od 3⁵/₈"

Length	Stock #	Order #
5'	3DV60	6001
4'	3DV48	6002
3'	3DV36	6003
2'	3DV24	6004
12"	3DV12	6006

5" Diameter - od 5⁵/₈"

Length	Stock #	Order #
5'	5DV60	6201
4'	5DV48	6202
3'	5DV36	6203
2'	5DV24	6204
12"	5DV12	6206

4" Diameter - od 4⁵/₈"

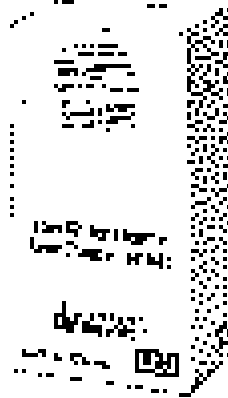
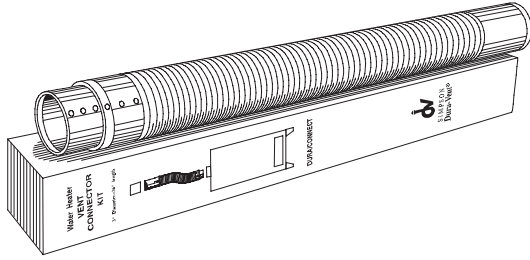
Length	Stock #	Order #
5'	4DV60	6101
4'	4DV48	6102
3'	4DV36	6103
2'	4DV24	6104
12"	4DV12	6106

6" Diameter - od 6⁵/₈"

Length	Stock #	Order #
5'	6DV60	6301
4'	6DV48	6302
3'	6DV36	6303
2'	6DV24	6304
12"	6DV12	6306

dv 4 inches per foot compression, zero stretch.



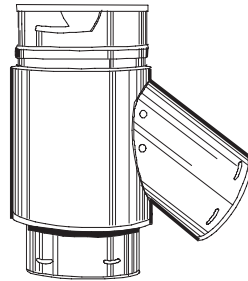
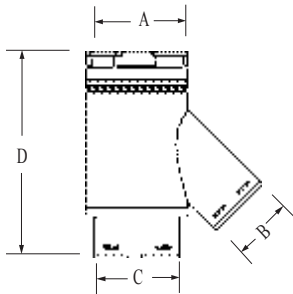


DURA/CONNECT Gas Water Heater Vent Connector Kits

3" x 24" 6061

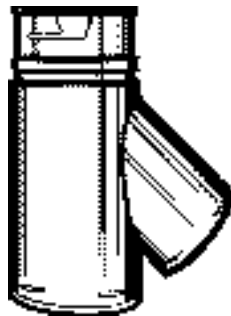
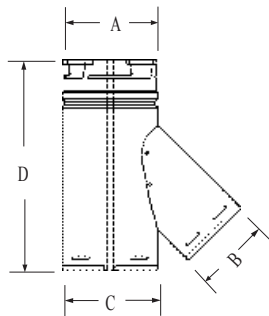
3" x 36" 6062

Water Heater Vent Connector Kits easily adapts to existing Type B gas vent. One piece unit with attached appliance connector and Type B gas vent adapter is available in self-merchandising cartons of six each.



Reduction Y's

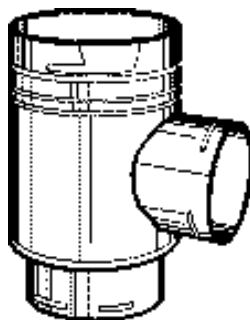
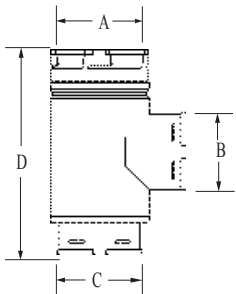
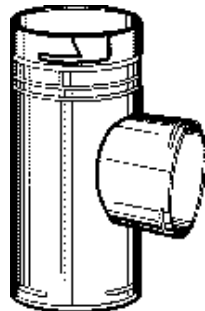
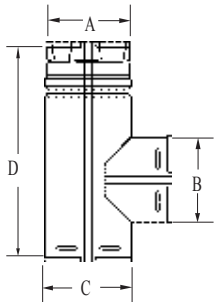
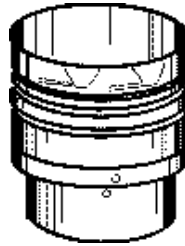
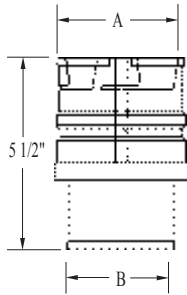
Size	Branch and Base	Stock #	Order #	A	B	C	D
4"	Y w/3" BR at 45°-3" Base	4DVY33	6143	4 5/8"	3 5/8"	3 5/8"	11 1/4"
5"	Y w/3" BR at 45°-4" Base	5DVY34	6243	5 5/8"	3 5/8"	4 5/8"	11 1/4"
	Y w/4" BR at 45°-4" Base	5DVY44	6242	5 5/8"	4 5/8"	4 5/8"	12 5/8"
	Y w/4" BR at 45°-3" Base	5DVY43	6248	5 5/8"	4 5/8"	3 5/8"	13"
6"	Y w/5" BR at 45°-3" Base	5DVY53	6241	5 5/8"	5 5/8"	3 5/8"	14 1/4"
	Y w/3" BR at 45°-4" Base	6DVY34	6344	6 5/8"	3 5/8"	4 5/8"	11 1/4"
	Y w/4" BR at 45°-3" Base	6DVY43	6341	6 5/8"	4 5/8"	3 5/8"	13"
7"	Y w/3" BR at 45°-5" Base	6DVY35	6343	6 5/8"	3 5/8"	5 5/8"	11 1/2"
	Y w/4" BR at 45°-5" Base	6DVY45	6342	6 5/8"	4 5/8"	5 5/8"	13"
	Y w/5" BR at 45°-5" Base	7DVY55	6448	7 5/8"	5 5/8"	5 5/8"	14 1/4"
7"	Y w/3" BR at 45°-5" Base	7DVY35	6446	7 5/8"	3 5/8"	5 5/8"	11 1/4"
	Y w/4" BR at 45°-5" Base	7DVY45	6447	7 5/8"	4 5/8"	5 5/8"	13"
7"	Y w/5" BR at 45°-5" Base	7DVY55	6448	7 5/8"	5 5/8"	5 5/8"	14 1/4"
	Y w/5" BR at 45°-3" Base	7DVY53	6445	7 5/8"	5 5/8"	3 5/8"	14 1/4"
7"	Y w/3" BR at 45°-6" Base	7DVY36	6449	7 5/8"	3 5/8"	6 5/8"	11 1/4"



Standard Y's

Size	Branch and Base	Stock #	Order #	A	B	C	D
3"	Y w/3" BR at 45°	3DVY	6045	3 1/2"	3 5/8"	3 5/8"	10 1/2"
4"	Y w/3" BR at 45°	4DVY3	6146	4 1/2"	3 5/8"	4 5/8"	10 1/2"
	Y w/4" BR at 45°	4DVY4	6145	4 1/2"	4 5/8"	4 5/8"	11 3/4"
5"	Y w/3" BR at 45°	5DVY3	6247	5 1/2"	3 5/8"	5 5/8"	10 1/2"
	Y w/5" BR at 45°	5DVY	6245	5 1/2"	5 5/8"	5 5/8"	13 1/4"
6"	Y w/3" BR at 45°	6DVY3	6348	6 1/2"	3 5/8"	6 5/8"	10 1/2"
	Y w/6" BR at 45°	6DVY	6345	6 1/2"	6 5/8"	6 5/8"	14 3/4"

Dura/Connect Single Wall Connector



Appliance Connectors

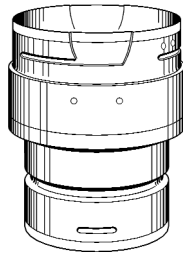
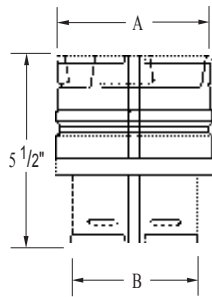
Size	Stock #	Order #	A	B
3"	3DVC	6070	3 1/2"	3"
4"	4DVC	6170	4 1/2"	4"
5"	5DVC	6270	5 1/2"	5"
6"	6DVC	6370	6 1/2"	6"

Standard Tees with 90° Branches

Size	Branch and Base	Stock #	Order #	A	B	C	D
3"	Tee w/3" BR at 90°	3DVT	6090	3 1/2"	3 5/8"	3 5/8"	9"
4"	Tee w/3" BR at 90°	4DVT3	6191	4 1/2"	3 5/8"	4 5/8"	10 1/2"
	Tee w/4" BR at 90°	4DVT	6190	4 1/2"	4 5/8"	4 5/8"	10 1/2"
5"	Tee w/3" BR at 90°	5DVT3	6292	5 1/2"	3 5/8"	5 5/8"	9"
	Tee w/4" BR at 90°	5DVT4	6291	5 1/2"	4 5/8"	5 5/8"	10"
	Tee w/5" BR at 90°	5DVT	6290	5 1/2"	5 5/8"	5 5/8"	12"
6"	Tee w/3" BR at 90°	6DVT3	6393	6 1/2"	3 5/8"	6 5/8"	9"
	Tee w/4" BR at 90°	6DVT4	6392	6 1/2"	4 5/8"	6 5/8"	10"
	Tee w/5" BR at 90°	6DVT5	6391	6 1/2"	5 5/8"	6 5/8"	11"
	Tee w/6" BR at 90°	6DVT	6390	6 1/2"	6 5/8"	6 5/8"	12"

Reduction Tees

Size	Branch and Base	Stock #	Order #	A	B	C	D
5"	Tee w/4" BR-3" Base	5DVT43	6293	5 1/2"	4 5/8"	3 5/8"	10 1/4"
	Tee w/3" BR-4" Base	5DVT34	6294	5 1/2"	3 5/8"	4 5/8"	9 1/4"
6"	Tee w/3" BR-4" Base	6DVT34	6395	6 1/2"	3 5/8"	4 5/8"	9 1/4"
	Tee w/4" BR-4" Base	6DVT44	6396	6 1/2"	4 5/8"	4 5/8"	10 1/4"
	Tee w/3" BR-5" Base	6DVT35	6397	6 1/2"	3 5/8"	5 5/8"	9 1/4"



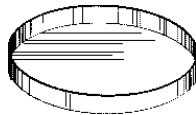
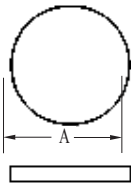
Increasers

Size	Stock #	Order #	A	B
3" x 4"	3DVX4	6010	4 1/2"	3 5/8"
3" x 5"	3DVX5	6011	5 1/2"	3 5/8"
3" x 6"	3DVX6	6012	6 1/2"	3 5/8"
4" x 5"	4DVX5	6110	5 1/2"	4 5/8"
4" x 6"	4DVX6	6111	6 1/2"	4 5/8"
4" x 7"	4DVX7	6112	7 1/2"	4 5/8"
5" x 6"	5DVX6	6210	6 1/2"	5 5/8"
5" x 7"	5DVX7	6211	7 1/2"	5 5/8"
6" x 7"	6DVX7	6310	7 1/2"	6 5/8"

To connect Dura/Connect with existing Type B gas vent use Female Adapter from page 10.

Tee Caps

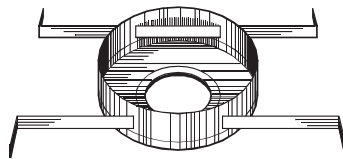
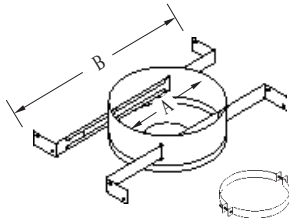
Size	Stock #	Order #	A
3"	3DVTC	6051	3 5/8"
4"	4DVTC	6151	4 5/8"
5"	5DVTC	6251	5 5/8"
6"	6DVTC	6351	6 5/8"



Round Supports

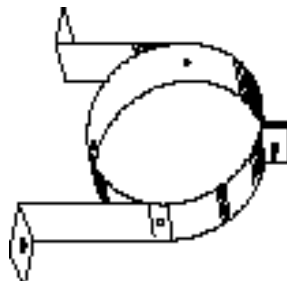
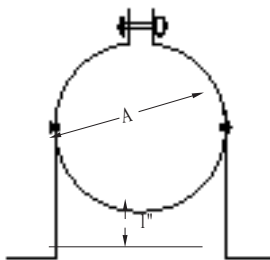
Size	Stock #	Order #	A	B
3"	3DVRS	6020	7	13 1/2" - 23*
4"	4DVRS	6120	7	13 1/2" - 23*
5"	5DVRS	6220	8	13 1/2" - 23*
6"	6DVRS	6320	8	13 1/2" - 23*
7"	7DVRS	6420	10	13 1/2" - 23*

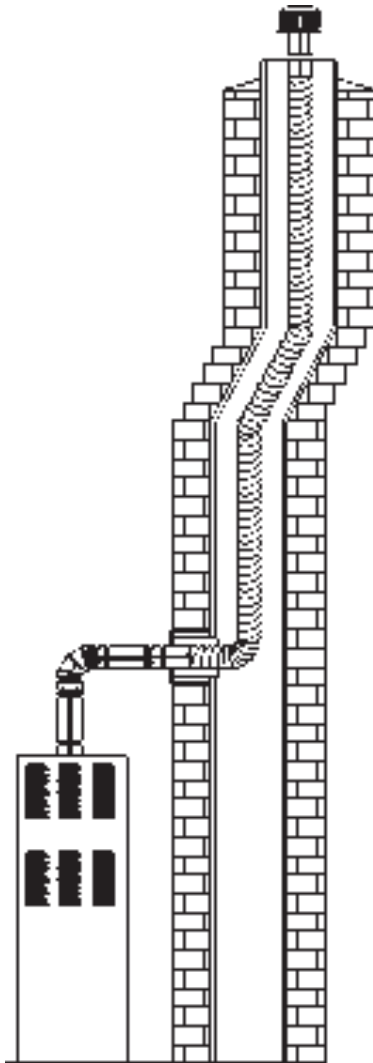
Adjustable legs.



Wall Straps

Size	Stock #	Order #	A
3"	3GVWS	1485	3 5/8"
4"	4GVWS	1486	4 5/8"
5"	5GVWS	1487	5 5/8"
6"	6GVWS	1488	6 5/8"
7"	7GVWS	1489	7 5/8"
8"	8GVWS	1490	8 5/8"



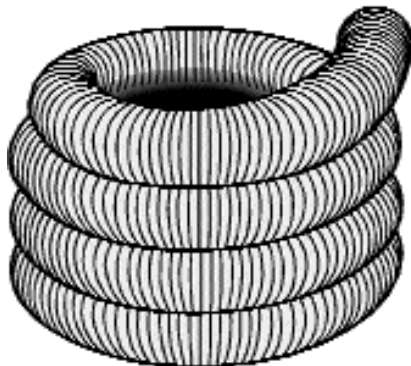


Fast, easy to install, flexible gas relining systems for safe, dependable venting of gas appliances and gas fireplace inserts

DuraFlex is a single wall flexible system that provides a properly sized masonry chimney liner. DuraFlex ensures an optimum draft and condensation-free performance when installed in warm masonry chimneys that are enclosed within the building on all four sides. Available in 5, 15, 25 and 35 foot flexible relining lengths. The light weight .010" thick aluminum flex heats up rapidly to minimize condensation, while providing a watertight conduit that protects both the masonry chimney and inside walls and ceiling from condensate damage.

For external masonry chimneys typically exposed on one or more sides to cold outdoor conditions, or for an exposed portion of the masonry chimney above the roofline, Simpson Dura-Vent provides the option of combining DuraFlex with double wall insulated Type B gas vent. This option is recommended for all near condensing Category I fan assisted furnaces.

DuraFlex Kits



KIT CONTAINS: Termination cap, universal/adaptor, flex connector, mortar sleeve, flashing and flex length

3" Diameter	
Size	Order #
3" x 15'	2200
3" x 25'	2210
3" x 35'	2220

5" Diameter	
Size	Order #
5" x 15'	2202
5" x 25'	2212
5" x 35'	2222

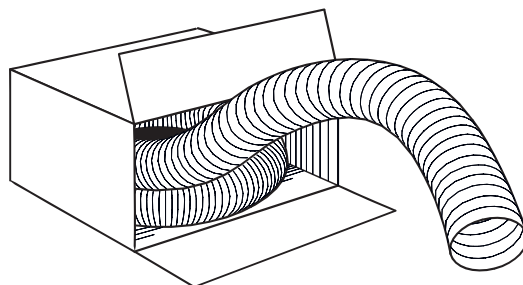
6" Diameter	
Size	Order #
6" x 15'	2203
6" x 25'	2213
6" x 35'	2223

4" Diameter	
Size	Order #
4" x 15'	2201
4" x 25'	2211
4" x 35'	2221

5 1/2" Diameter	
Size	Order #
5 1/2" x 15'	2206
5 1/2" x 25'	2216
5 1/2" x 35'	2226

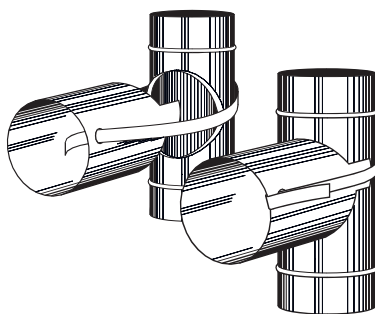
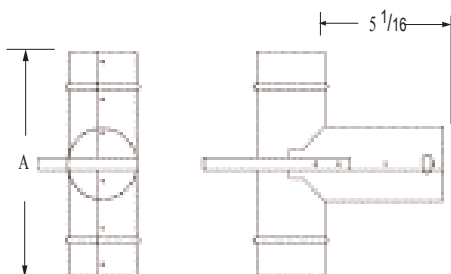
7" Diameter	
Size	Order #
7" x 15'	2204
7" x 25'	2214
7" x 35'	2224

8" Diameter	
Size	Order #
8" x 15'	2205
8" x 25'	2215
8" x 35'	2225



DuraFlex Extensions

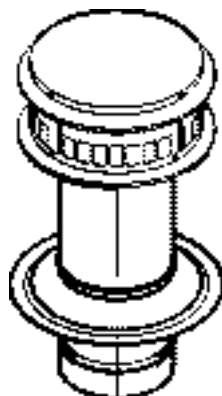
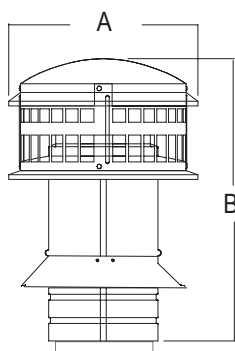
Size	Order #
3" x 5'	2250
3" x 35'	2280
4" x 5'	2251
4" x 35'	2281
5" x 5'	2252
5" x 35'	2282
5 1/2" x 5'	2256
5 1/2" x 35'	2286
6" x 5'	2253
6" x 35'	2283
7" x 5'	2254
7" x 35'	2284
8" x 5'	2255
8" x 35'	2285



NOTE: For common venting, combine two tees.

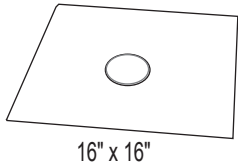
DuraFlex Tee with Removable Branch

Size	Order #	A
3"	2160	9 7/16"
4"	2161	9 7/16"
5"	2162	11 3/4"
5 1/2"	2166	11 3/4"
6"	2163	11 3/4"
7"	2164	13 3/4"
8"	2165	13 3/4"



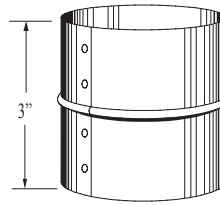
Cap Assembly

Size	Order #	A	B
3"	2230	8"	11 9/16"
4"	2231	8"	11 9/16"
5"	2232	11"	13 1/16"
5 1/2"	2236	11"	13 1/16"
6"	2233	11"	13 1/16"
7"	2234	15"	13 11/16"
8"	2235	15"	13 11/16"



Flashing Cover 16" x 16"

Size	Order #
3"	2100
4"	2101
5"	2102
5 1/2"	2106
6"	2103
7"	2104
8"	2105



Universal Adapter/ Flex Connector

Size	Order #
3"	2150
4"	2151
5"	2152
5 1/2"	2156
6"	2153
7"	2154
8"	2155

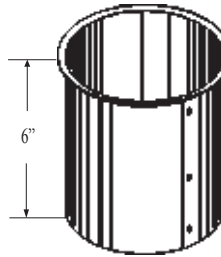
Gas fireplace and/or single wall adapter.



5' Length Flex Relinings

Size	Stock #	Order #
4"	4GV60F	2F
5"	5GV60F	3F
6"	6GV60F	4F

DV 5 foot Flex Relining is used for offsets when relining with Dura-Vent Type B gas vent. Add 5/8" for OD.

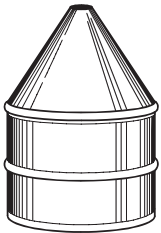


Mortar Sleeves

Size	Order #
3"	2140
4"	2141
5"	2142
5 1/2"	2146
6"	2143
7"	2144
8"	2145

Flex Pullers

Size	Order #
3"	2190
4"	2191
5"	2192
6"	2193
7"	2194
8"	2195



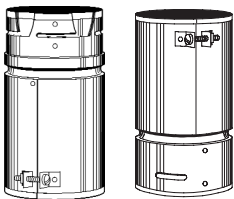
Type B gas vent Masonry Relining Termination Kit includes: DuraCap termination, storm collar, clamp and base.

Masonry Relining Termination Kits

Size	Stock #	Order #
3"	460A	3GVKA
3"	460B	3GVKB
4"	461A	4GVKA
4"	461B	4GVKB
5"	462A	5GVKA
5"	462B	5GVKB
6"	463A	6GVKA
6"	463B	6GVKB

Order numbers ending in A, base plate is 13" x 13".
Order numbers ending in B, base plate is 13" x 18"

DV Only way to terminate Type B gas vent reline jobs.



Male Female

Male/Female Adapters

Size	Female Order #	Male Order #
3"	2120	490
4"	2121	491
5"	2122	492
6"	2123	493
7"	2124	2127
8"	2125	2128

Use to attach DuraFlex relining to round Type B gas vent.

ITEM	CLEARANCE TO COMBUSTIBLES	MAXIMUM HEIGHT	OUTER TUBE DIAMETER	MATERIALS	LOCKING DEVICE	UL LISTING NUMBER
Type B Vent Round 3"- 8"	1 inch	100 feet	5/8" larger than ID	Inner - Aluminum Outer-Galvanized	Twist-Lock	MH6357
Round 10" to 16" See notes 2 & 5	1 inch	100 feet	1" larger than ID	Inner - Aluminum Outer-Galvanized	Twist-Lock	MH6357
Round 18" to 30"	1 inch	100 feet	2" larger than ID See note 5	Inner - Aluminum Outer-Galvanized	Screws	MH6357
Oval Type B vent 4" and 5"	2" x 4" & 2" x 6" stud wall and 1inch in others	See note 3	2 1/2" x 7' 4" 3 1/8" x 12"	Inner - Aluminum Outer-Galvanized	Button Lock	MH6357
Oval 6"	2 x 6 stud wall and 1 inch	See note 3	3 1/4" x 12"	Inner - Aluminum Outer-Galvanized	Button Lock	MH6357
Type B Vent 3" to 6" Round Liner	Masonry/ 0" / 0"	50 feet	5/8" larger than ID	Inner - Aluminum Outer-Galvanized	Twist-Lock	MH14420 MH6357
DuraFlex Gas Relining 3" to 6"	0"/Masonry	50 feet	1/4" larger than ID	Aluminum Flex	Screws Twist-Lock	MH14420
Dura/Connect 3" to 6"	1 inch	See note 4	1/4" larger than ID	Aluminum Flex Galvalume	Twist-Lock	MH14089

NOTES

- Clearance to combustibles is the air space between vent and combustibles.
- Maximum height varies with equipment over 50', for taller applications refer to SDV sizing handbook.
- When oval is used on wall furnaces, minimum height required from base to cap is 12', minimum 16" stud space.
- Limited by capacity tables.
- 18" pipe OD is one inch larger than ID and 20" - 30" OD is 2" greater than ID.

Rules for Safe Venting of Gas Appliances

Proper gas venting should perform the following functions to insure safe and dependable operation of the appliance

- Safely vent all of the hot combustion gases to the outside atmosphere.
- Prevent overheating of nearby walls or framing.
- Control condensation of water vapor present in combustion gasses.
- Provide fast priming of the unit.

The amount of heat the vent gases lose as they flow determines how much condensation will occur and how strong the draft will be. To control the heat losses, proper selection of venting materials is of vital importance.

Type B double wall gas vent, with an aluminum inner wall and a galvanized steel outer wall, has proven to be the ideal choice in venting materials.

Vent Termination Table

Gas Vent systems using vent caps listed by Underwriter's Laboratories may terminate in accordance with this table

Roof Pitch	Minimum Height	
	Feet	Meters
Flat to 7/12	1.0	0.30
Over 7/12 to 8/12	1.5	0.46
Over 8/12 to 9/12	2.0	0.61
Over 9/12 to 10/12	2.5	0.76
Over 10/12 to 11/12	3.25	0.99
Over 11/12 to 12/12	4.0	1.22
Over 12/12 to 14/12	5.0	1.52
Over 14/12 to 16/12	6.0	1.83
Over 16/12 to 18/12	7.0	2.13
Over 18/12 to 20/12	7.5	2.29
Over 20/12 to 21/12	8.0	2.44

SIMPSON

Dura-Vent

WARRANTIES

25 YEAR WARRANTY

SIMPSON Dura-Vent warrants the following products: Type B Gas Vent, All-Fuel Class A Chimney (Dura/Plus and Dura-Chimney), Close Clearance Connector Pipe (DVL), Stainless Steel Chimney Liner (Dura/Liner) and Pellet Vent for a period of twenty-five years from the date of installation. Warranty includes component fittings, except rain caps which are covered for five years from date of installation.

10 YEAR WARRANTY

SIMPSON Dura-Vent warrants Dura/Connect pipe and fittings for a period of ten years from the date of installation. Corrosion that results from contaminated intake air, due to storage of corrosive agents such as laundry bleach, paint solvents, etc. near the appliance, is excluded from coverage under this warranty.

SIMPSON Dura-Vent warrants DuraFlex products for a period of ten years from the date of installation. Warranty includes component fittings, except cap assembly, which is covered for five years from date of installation.

SIMPSON Dura-Vent warrants Direct Vent pipe and fittings for a period of ten years from the date of installation.

SIMPSON Dura-Vent warrants Dura-Black Drip Free Stovepipe for a period of five years from the date of the installation.

All warranties, whether expressed or implied, shall be limited to the replacement (exclusive of installation costs) of pipe lengths and components found to be defective under this warranty, and shall be conditional upon compliance with the manufacturer's recommended installation and maintenance procedures and intended use of the product. All products must be maintained by periodic inspection and cleaning as needed, including chimney exposed to weather containing corrosive elements.

TERMS

- 2% 10th, NET 30 days.
- 1¹/₂% interest per month on overdue accounts.
- Different multiplier may apply. Consult your program for appropriate multiplier.
- Allow 10 working days for shipment.
- All prices are subject to change without notice.
- All orders will be invoiced at prices in effect at date of shipment.
- Ten percent (10%) charge for broken cartons.
- All palletized shrink wrapped orders are an additional \$5 per pallet

COMPANY POLICY

CREDIT POLICY - All new customers must be pre-qualified by our Credit Department to ensure their ability to handle desired purchases. All new customers must submit three references with credit histories and limits equal to the credit amounts requested from Simpson Dura-Vent. Customers must remain current to receive shipments.

SHIPMENTS - All orders are shipped complete, unless specifically requested by the customer. Discounts earned by a total order prevail even if a customer requests partial shipment. Freight terms are applied separately to each part of an order when a request for a partial shipment is made by the customer. All discounts and terms must be approved in advance by the sales department.

RETURNS - Company policy states that all sales are final. When damages occur during transit, customers are advised and instructed to contact the transportation company in establishing claims for shortage, loss or damage. Customers will be credited for defective parts not related to shipping damage in accordance with Simpson Dura-Vent's terms and conditions in effect at the time of the claim. Please contact our Customer Service Department for further information.

Help us help you, call our

CUSTOMER SERVICE CENTER

800-835-4429

707-446-4740 FAX

Other Quality

Dura-Vent Systems:

Direct Vent GS®

Direct vent for gas stoves

Dura/Plus®

All fuel triple wall vent

DVL® Connector

Close clearance connector double wall vent

Dura-Black® Stovepipe

Single wall black stovepipe

Dura/Liner®

All fuel chimney relining

Pellet Vent®

Pellet vent systems

Dura-Vent is a registered trademark of
SIMPSON Dura-Vent Co., Inc.,

Direct Vent GS, Dura/Plus, DVL,
Dura/Liner, Dura-Black, Pellet Vent,
Dura/Connect, and DuraFlex are registered
trademarks of SIMPSON Dura-Vent Co., Inc.,

All rights reserved
©Copyright 1999 - SIMPSON Dura-Vent Co., Inc.



Direct Vent GS

**Additional professional
SIMPSON Dura-Vent products:**

GAS VENT systems

DIRECT VENT GS®

Direct vent systems for direct vent appliances



**Dura/Plus, DVL Close Clearance
Connector, Dura-Black stovepipe**



Pellet Vent

ALL FUEL systems

DURA/PLUS® - 2100° HT triple wall
chimney vent for all fuel products

DVL® - Close Clearance Connector
- Double wall close clearance connector

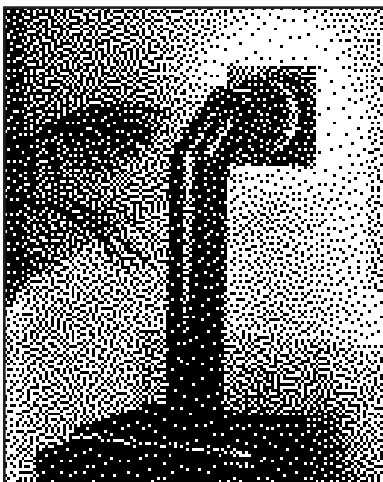
DURA-BLACK® - Single wall stovepipe

PELLET VENT® - Pellet vent systems
for pellet vent appliances

DURA/LINER® - Single and double wall
masonry relining systems for all fuel



**Dura/Liner, single and double
wall masonry reliner for all fuel**



**Designer Series pipes
and covers**

ACCESSORIES

Designer Series - Decorative pipe
covers and trim kits for Pellet Vent, Dura/Plus
Chimney and gas vent products



**Designer Series pipes
and covers**