

12

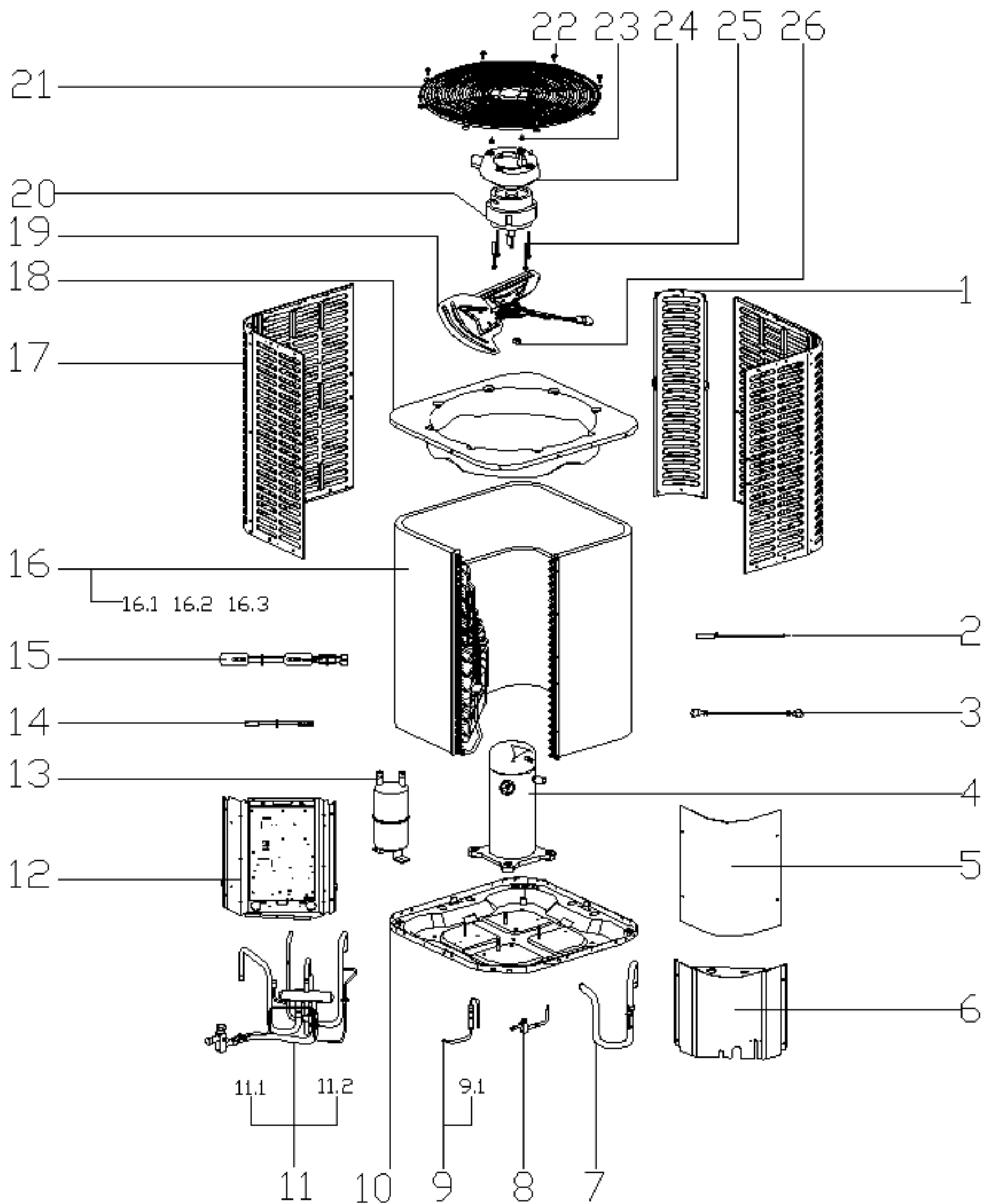
12.1

12.5

12.4

12.2

12.3



Exploded View

产品编码(Product model) : 22023016002571
 客户编码(Customer No) : G0001615
 客户型号(Customer model) : MOV-60HN1-M14L
 订单编码(Order Product Code) : 62230-A4211409

EX_ID	Spare Parts Code	Part Name(CN)	Part Name(EN)	Qty.	Remark2	Part Status	Drawing No	MIN_ORDER_QTY	Long Term Material(Y or N)	High Rate of Replacement(Y or N)	SB Type	Replace Type	Remarks
1	12223100000247	支撑板 SB3053 RoHS UL-KF140W/N1-543V3-1	Support Plate	3		In use	UL-KF140W/N1-543V3-1						
2	11201007001782	管温传感器	Pipe Temperature Sensor	1	T3	In use	CGQ-WD/GW4100-L800-SMP3B	10	N	Y			
3	17401110000020	绿色接地线	Green ground line	1		In use	L700Φ2.1(aM4bM5)/UL1015-14-GN						
4	11102010000184	定速涡旋式压缩机	Fixed speed scroll compressor	1		In use	ABG049KAC		N	Y			
5	12223100A00133	上侧板(SB3053)	Side board	1		In use	UL-KF53W/N1-411V3-6						
6	12223000A04369	侧板部件 SB3053 REACH,RoHS EAIR-KF140W/N1-543V3.3A	Side plate assembly	1		In use	EAIR-KF140W/N1-543V3.3A						
7	15423000004586	回气管组件	Suction pipe ass'y	1		In use	UL-KFR160W/N1-532V4E[L].ZL.3						
7.1	17400516000149	压力控制器 RoHS YK-0.3/0.14-700(UL)	Pressure switch	1		In use	YK-0.3/0.14-700(UL)			N			
8	15423000003178	高压阀组件	Stop valve ass'y	1		In use	UL-KF53W/N1-411V3.ZL.2A						
9	15423000004818	节流阀组件	Throttle assembly	1		In use	UL-KFR160W/N1-532V6[L].ZL.2						
9.1	15500210000350	单向管道节流阀	Throttle	1		In use	JLF(H)-H070-GD-A		N	Y			
10	12223000002430	底座部件(SB3053)	Base ass'y	1		In use	UL-KF105W/N1-531V3.1						
11	15423000004819	四通阀组件	4-way valve ass'y	1		In use	UL-KFR160W/N1-532V6[L].ZL.4						
11.1	15423000004820	四通阀部件	4-way valve assembly	1		In use	UL-KFR160W/N1-532V6[L].ZL.4.1						
11.1.1	17400516000032	压力控制器	Pressure switch	1		In use	YK-4.4/3.2-600(UL)			N			
11.1.2	15500206000017	方体阀	Block valve	1		In use	FTFM-05N1						
11.2	15123000012067	表接头组件	Pipe joint ass'y	1		In use	UL-KFR105W/N1-531V4E[L].ZL.4.2A						
12	17223000A05937	室外机电控盒组件	E-part box assembly	1		In use	TR-KFR160W/N1-532V6[L].D.1(DZ)						
12.1	12223000A04371	电控安装板组合件	Installation plate of electric parts subassembly	1		In use	EAIR-KF90W/N1-541V3.DK.1.1C						
12.2	17400103000133	压缩机电容	Capacitor	1		In use	70uF/450V-P2(2000h)						
12.3	11201708000008	接线柱 RoHS JXZH-CuH62-a6.6bM5	Wiring Terminal	1		In use	JXZH-CuH62-a6.6bM5						
12.4	11203502000032	交流接触器	AC contactor 24V	1		In use	JCQ-40A-10-24VAC-L		N	Y			
12.5	17123000005535	室外主控制板组件	Outdoor main control board assembly	1		In use	UL-WKR160A/MN1X-16B.D.1			Y			
13	15500508001115	贮液筒	Accumulator cylinder	1		In use	ZYT-03E(GT)A						
14	17401203001230	压缩机连接组	Compressor wire joint ass'y	1		In use	UL-KF160W/N1-532V3[L].D-1(LG:EAD36733405)						
15	17402001000056	压缩机电加热带(带弹簧)	crankcase electric heater	1		In use	DJRD-510A-1300-30W						
16	15823000004783	冷凝器部件	Condensor ass'y	1		In use	UL-KFR160W/N1-532V6[L].ZL.1			N			
16.1	15823000004785	冷凝器(亲水/1.3)	Condenser	1		In use	BO-KFR160W/BP2N1-532V20[G].ZL.1.1						
16.1	15823000004784	冷凝器(亲水/1.3)	Condenser	1		In use	BO-KFR160W/BP2N1-532V20[G].ZL.1.4						
16.2	15123000008850	冷凝器输入管组件	Condenser inlet pipe ass'y	1		In use	HVA-KFR160W/N1-532V6.ZL.1.2A						
16.3	15123000008839	冷凝器输出管组件	Condenser output pipe ass'y	1		In use	HVA-KFR160W/N1-532V6.ZL.1.3A						
17	12223100000361	侧板组件1(SB3053)	sideboard	2		In use	UL-KF160W/N1-532V3.1						
17	12223100000368	侧板组件2(SB3053)	sideboard	2		In use	UL-KF160W/N1-532V3.2						
18	12223000001096	顶盖部件(SB3053)	Top cover ass'y	1		In use	HVA-KF105W/N1-531V3.1A						
19	12200104000032	轴流风叶	Fan,3 blade count,aluminum alloy galvanized,D 23inch,60DEG(60),1/2inch Shaft Bore,CW(along air flow direction)	1		In use	ZL-585*110*12.7-3N	0	N	Y			
20	11002015009345	无刷直流电机	Brushless DC Motor	1		In use	ZKSP-200-8-1	4		Y			
21	12227700003729	顶盖网罩(SB3023)	Top cover	1		In use	UL-WKR71A/MN1X-14A.1	1	N	N			
22	11301002000001	六角头螺栓和弹簧垫圈及大垫圈组合件	Stainless steel bolts	8		In use	MJ16-00040	0	N	N			
23	11301604000001	盖形螺母	Cap nut	4		In use	MJ13-00133						

24	1212300000464	电机安装板组件(S1022)	Motor installation board ass'y	1		In use	HVA-KF160W/BP2N1-532V8[T].1	0	N	N		
25	1130180500012	电机安装螺栓	Electrical installation bolt	4		In use	MJ05-00154					
26	11301512000143	1型六角螺母	Nut	1		In use	GBT6170	20				