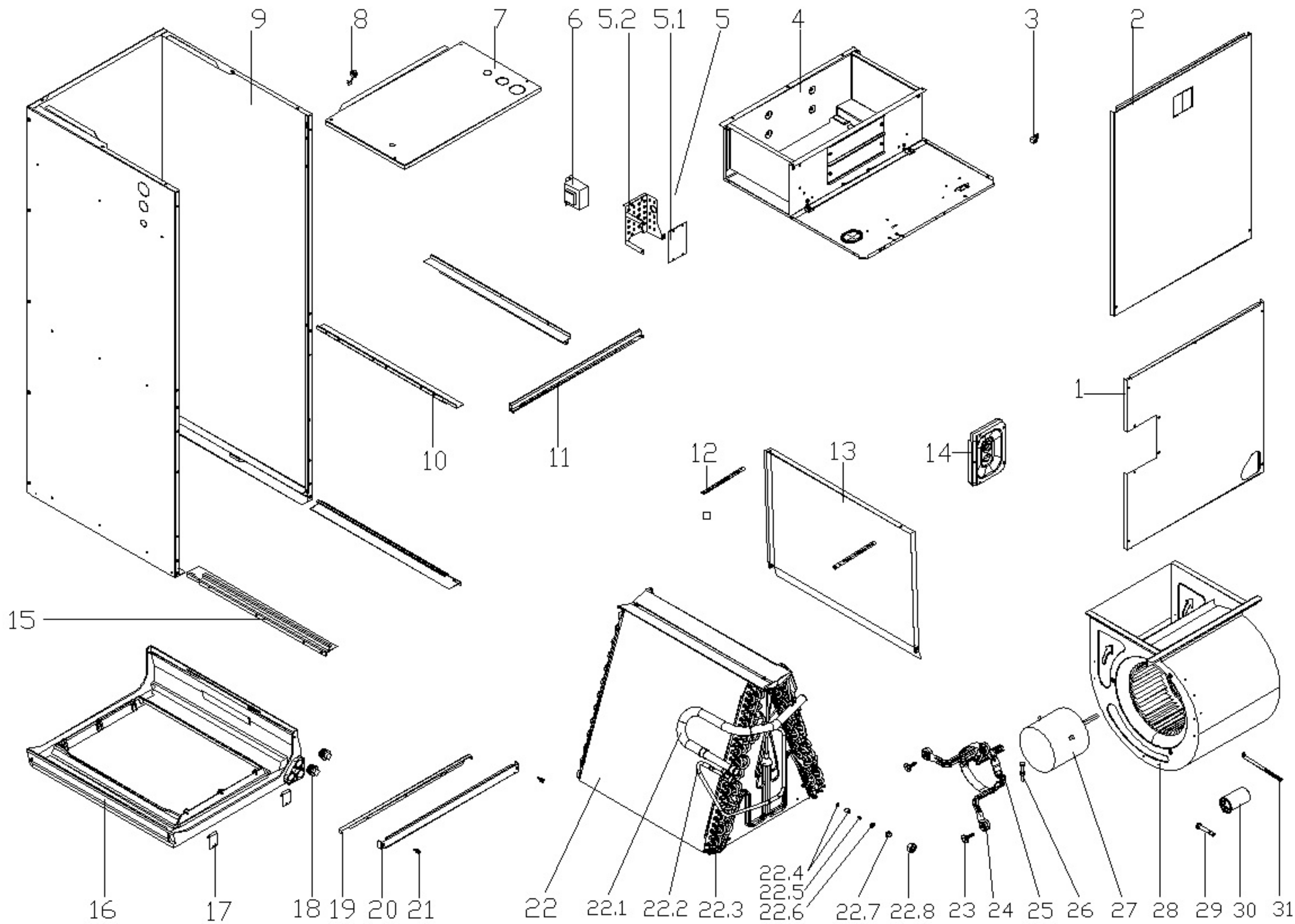


5.1

5.2



Exploded View

产品编码(Product model) : 22023011004319
 客户编码(Customer No) : G0001615
 客户型号(Customer model) : MVMP60C2MN10A
 订单编码(Order Product Code) : 62230-A4211401

EX_ID	Spare Parts Code	Part Name(CN)	Part Name(EN)	Qty.	Remark2	Part Status	Drawing No	MIN_ORDER_QTY	Long Term Material(Y or N)	High Rate of Replacement(Y or N)	SB Type	Replace Type	Remarks
1	12223000A04589	侧板组件 色号SB3053 REACH,RoHS TR-KFR120V/PON1X-A.3	Side panel assembly	1		In use	TR-KFR120V/PON1X-A.3						
2	12223000002197	上侧板组件(SB3053)	Side panel ass'y, up	1		In use	UL-KF160V/N1X.2						
3	11201708000008	接线柱 RoHS JXZH-CuH62-a6.6bM5	Wiring Terminal	1		In use	JXZH-CuH62-a6.6bM5						
4	12223000002127	风道组件	Air channel ass'y	1		In use	UL-KF160V/N1X.7	1	N	N			
5	17223000005757	室内电控盒组件 REACH,RoHS UL-KF105V/N1X.D.4	E-part box assembly	1		In use	UL-KF105V/N1X.D.4						
5.1	17127700000037	室内主控板组件(中央)	Main control board subassembly	1		In use	UL-WKC105A/MN1X-14A.D.1.1			Y			
5.2	12223000002167	电器安装板	Electric installation board	1		In use	UL-KF71V/N1X.D.1-1						
6	11203103000141	线性变压器	Transformer	1		In use	TT220-EI66-24/150-F2		N	Y			
7	12223000002212	上前侧板组件(SB3053)	Side board ass'y	1		In use	UL-KF160V/N1X.4						
8	12100304000011	电线卡扣(SR-6R1)	Clamp	1		In use	XK-F03						
9	12223000002371	底盘组件(SB3053)	Base ass'y	1		In use	UL-KF160V/N1X.1						
10	12223000001940	接水盘支撑焊合件I	Drainage pan supporting board	2		In use	UL-KF160V/N1X.5						
11	12223000010767	支撑系组件 REACH,RoHS TR-KFR120V/PON1X-A.2	Supporter assembly	1		In use	TR-KFR120V/PON1X-A.2						
12	12223000010756	接水盘拉条	Drainage pan clamp	2		In use	TR-KFR71V/PON1X-A-10						
13	12223000001212	接水盘II(SB3053)	Drainage pan	1		In use	UL-KF160V/N1X-11	0	N	Y			
14	12223000A04591	配管盖板组件 色号SB3053 REACH,RoHS TR-KFR71V/PON1X-A.4	Cover plate ass'y	1		In use	TR-KFR71V/PON1X-A.4						
15	12223000010759	接水盘支撑焊合件 REACH,RoHS UL-KF160V/N1X.9A	Drainage pan supporting board	2		In use	UL-KF160V/N1X.9A						
16	12123000000110	接水盘组件	Drain pan ass'y	1		In use	UL-KF160V/N1X.10A		N	Y			
17	12223000000028	接水盘定位板	Fixing board of water collector	2		In use	UL-KF71V/N1X-21						
18	15500402000023	封口塞 RoHS UL-KF71V/X.2-g	seal plug	2		In use	UL-KF71V/X.2-9						
19	12223000002101	支撑条	Supporting bar	1		In use	UL-KF160V/N1X-7						
20	12223000002003	滤尘网盖板(SB3053,单面喷涂)	Cover board	1		In use	UL-KF160V/N1X-8						
21	11301230000002	手拧螺钉	Screw	2		In use	MJ01-00125	0	N	N			
22	15823000A04076	蒸发器部件	Evaporator assembly	1		In use	BO-KFR160V/ETN1X-A.ZL[AL].1B					N	
22.1	15223000A00021	蒸发器输出管组件	Evaporator output pipe assembly	1		In use	TR-KFR160V/PON1X-A.ZL[AL].1.3						
22.2	15423000A01115	蒸发器输入管组件	Evaporator input pipe assembly	1		In use	TR-KFR160V/PON1X-A.ZL[AL].1.2						
22.3	15823000004724	蒸发器	Evaporator	2		In use	BO-KFR160V/ETN1X-A.ZL[AL].1.1						
22.4	15500210000968	节流阀阀芯座套件	Throttle	1		In use	MCPV2430ANTF.ZL.1.4	0	N	Y			
22.5	15500220000013	附件-阀芯	Piston	1		In use	FX-090(H)						
22.6	12100901000010	附件-密封圈	Sealing ring	1		In use	MFQ-11.8*14.5*11.7-N-A						
22.7	15500302000014	法兰接头 RoHS MCPV2430ANTF.ZL.1.2-6	Flange joint	1		In use	MCPV2430ANTF.ZL.1.2-6						
22.8	15500402000185	螺帽	Nut	1		In use	LM-03(090)						
23	11301705000031	六角头螺栓	Hexagon Head Screw Bolt	3	undefined	In use	GBT5783	20					
24	12223000001932	电机支架组件I RoHS UL-KF71V/N1X.16	Supporter subassembly of fan motor	3		In use	UL-KF71V/N1X.16						
25	12223000001992	电机支架II RoHS UL-KF71V/N1X-24	Supporter of fan motor	1		In use	UL-KF71V/N1X-24	1	N	N			
26	11301705000106	六角头螺栓	Hexagon head bolt	1	undefined	In use	GBT5783	20					

27	11002012001220	单相异步电机	Single phase asynchronous motor	1		In use	YKS-400-6-7		N	Y		
28	12200101000029	风轮部件	Fan assembly	1		In use	LX-279*271*12.7-51J-C(LD)	1	N	N		
29	15500302000006	法兰接头	Attachment-flange connection pipe	1		In use	MCPV2430ANTF.ZL.1.2-3					
30	17400103000149	压缩机电容 RoHS 20uF/450V-P2(2000h)	Capacitor of compressor	1		In use	20uF/450V-P2(2000h)					
31	12223000002177	接水盘拉条	Drainage pan clamp	1		In use	UL-KF71V/N1X-10					