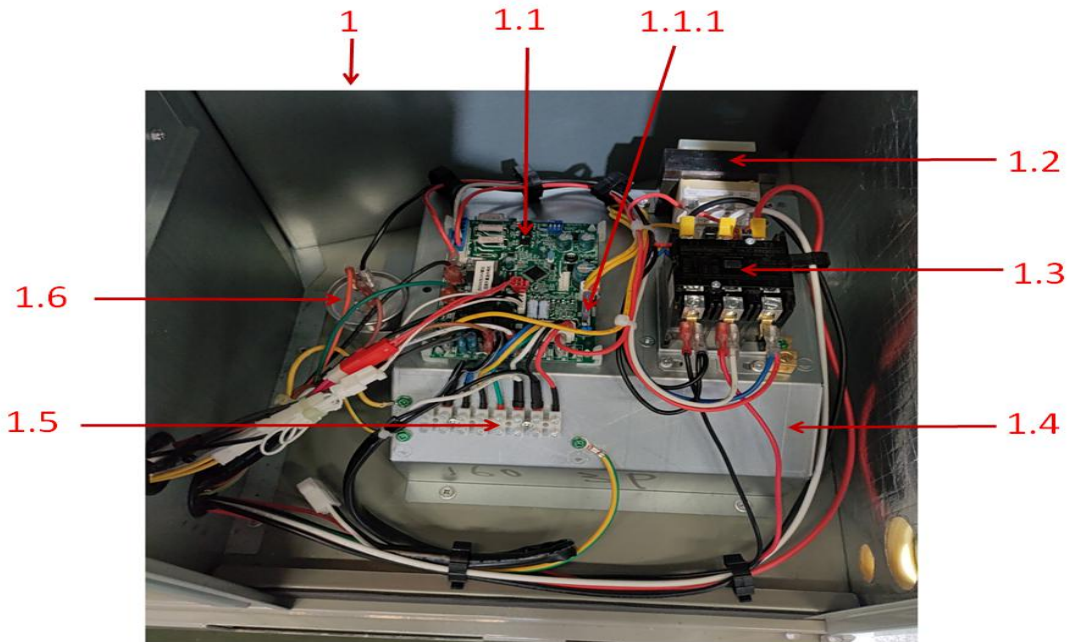
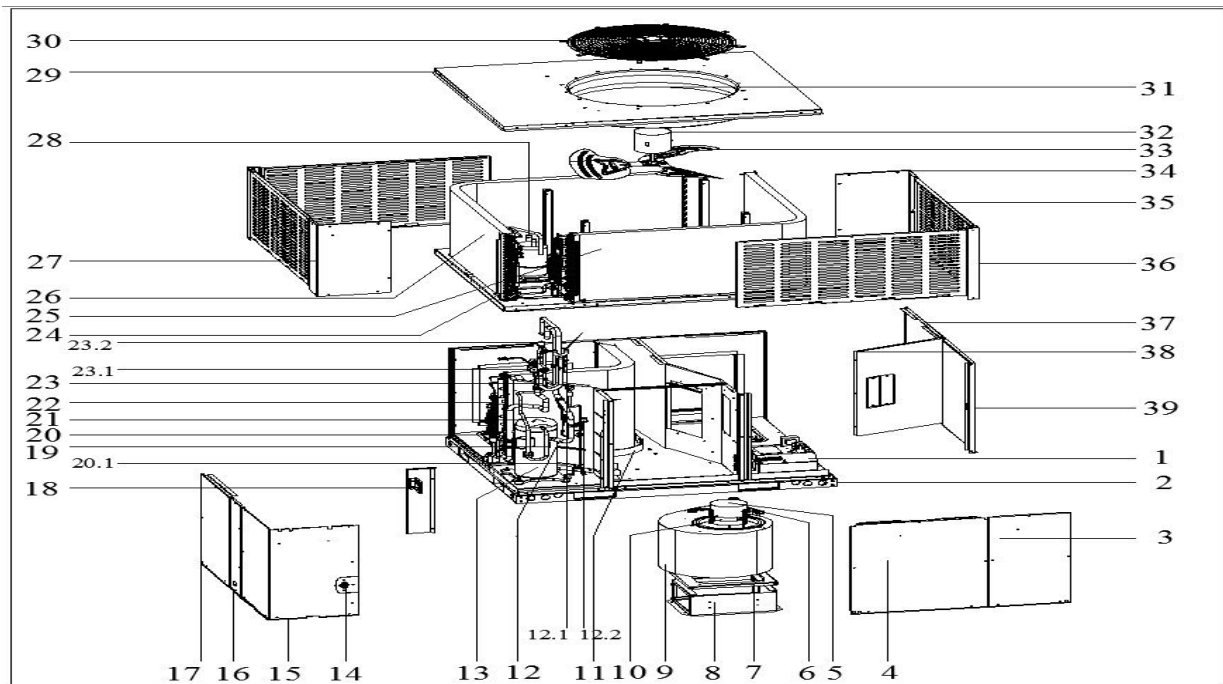


(Midea CAC Exploded view)

MRD-60HWN1-X14C



No.	Part Number	Part Name	Quantity
1	1722770000958	E-part box assembly	1
1.1	1712770000968	Main control board assembl	1.0
1.1.1	11203001001353	Fuse	1.0
1.2	11203103000194	Linear Transformer	1.0
1.3	11203502000029	AC contactor	1.0
1.4	12227700006629	Electrical appliance moun	1.0
1.5	17400401000196	Wire joint, 8P	1.0
1.6	17400103000151	Capacitor	1.0
2	12227700A06800	Chassis part	1
3	12227700A07185	Internal panel assembly	1
4	12227700A06821	Internal panel assembly	1
5	11002015011927	Brushless DC Motor	1

6	12223000001932	Supporter subassembly of	3
7	12227700006164	Wind wheel fixed plate	1
8	12227700006171	Fan support board	1
9	12200101000213	Wind turbine parts	1
10	12223000001992	Supporter of fan motor	1
11	12127700000097	Drainage pan assembly	1
12	15427700002011	Suction pipe assembly	1
12.1	15427000001439	Fusible plug assembly	1.0
12.2	17400516000089	Pressure switch	1.0
13	11102010001498	Fixed speed scroll compre	1
14	11201007000025	Room Temperature Sensor	1
15	12227700A06838	Panel	1
16	12227700A06826	Column assembly	1
17	12227700A06846	Internal panel assembly	1
18	12227700006185	Installation board	1
19	17400513000070	Discharge Temp. sensor	1
20	15427700001994	Throttle assembly	1
20.1	15500210004111	Throttle	1.0
21	15427700001991	Air discharge pipe assemb	1
22	15827700000710	Evaporator assembly	1
23	15427700002010	Four-way valve assembly	1
23.1	15500216000084	4-way valve	1.0
23.2	17400516000101	Pressure switch	1.0
24	11201007000412	Pipe Temperature Sensor	1
25	15827700000712	B unit condenser assembly	1
26	15827700000708	B unit condenser assembly	1
27	12227700A06980	Column assembly	1
28	15500508000082	Accumulator cylinder	1
29	12227700A06835	Top cover welding assembl	1
30	12927700000301	protection net	1
31	12227700006170	Air guide ring	1
32	11002012028483	Single phase asynchronous	1
33	12200104000122	Axial fan	1
34	12227700A06825	Column	1
35	12227700A06843	Protective plate assembly	4
36	12227700006169	Column	2
37	12227700A07189	Internal panel assembly	1
38	12227700006260	Circuit board assembly du	1
39	12227700A07182	Column assembly	1