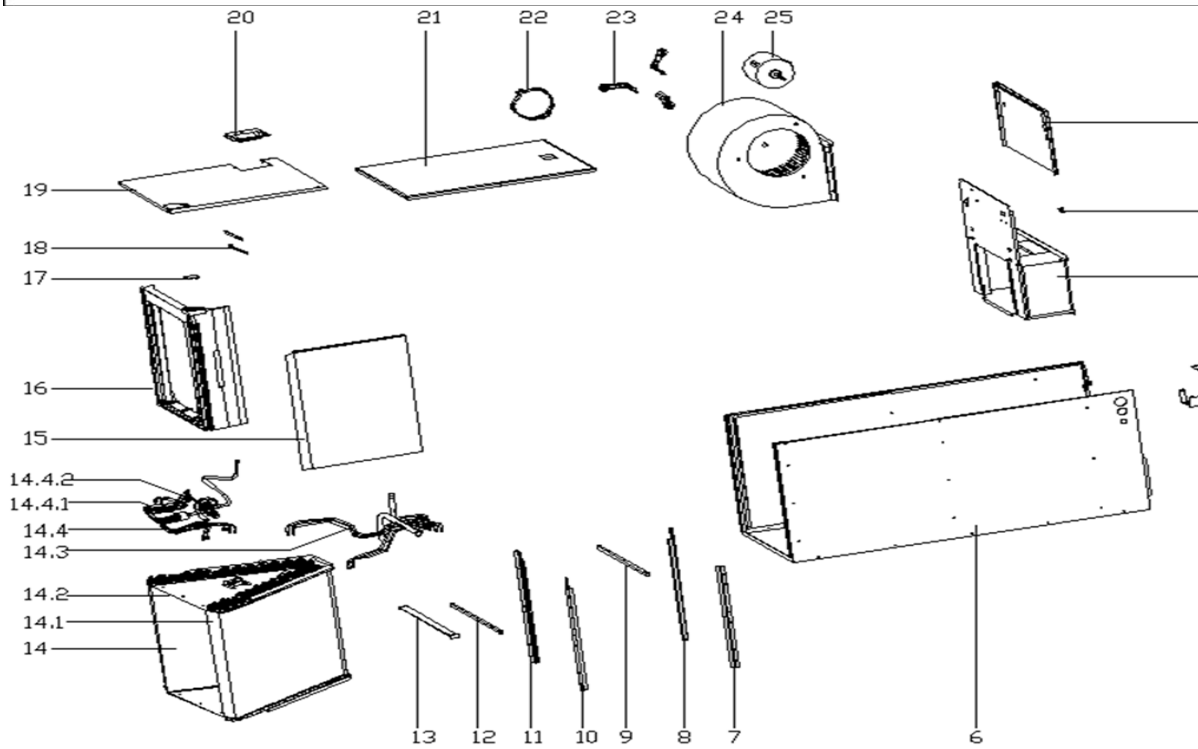
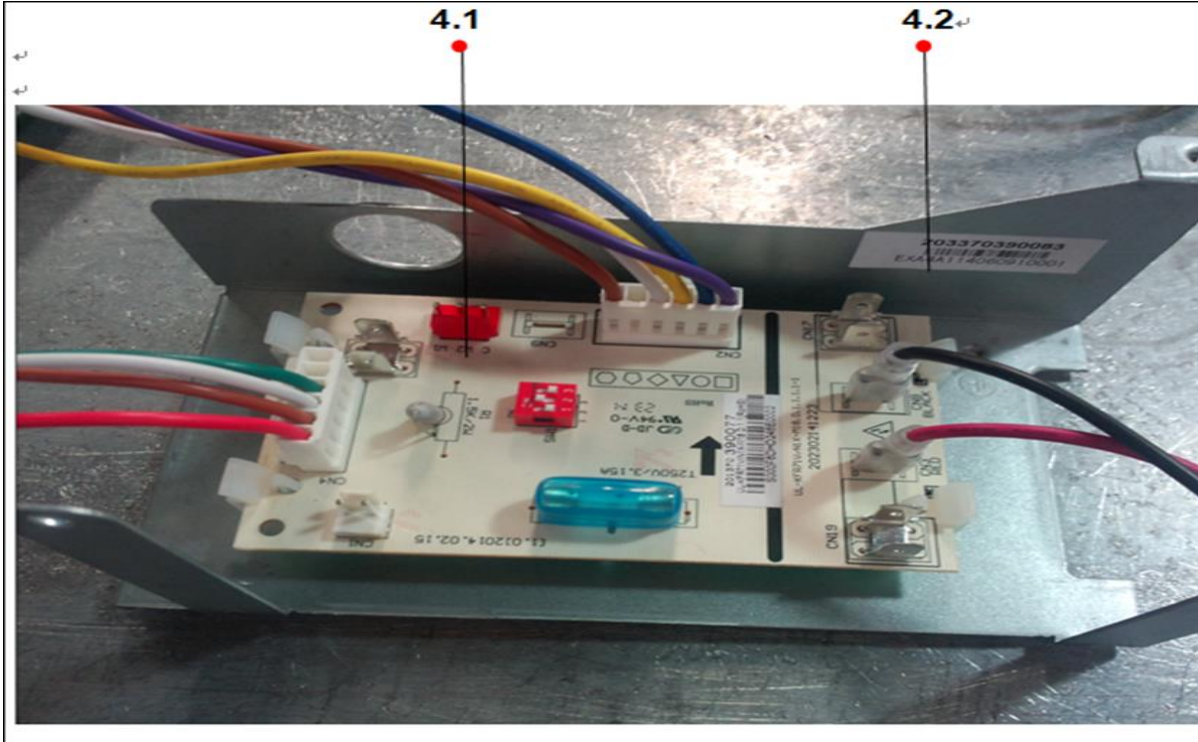


This document contains classified information.  
 All individuals are strictly forbidden from any form of disclosure in whole or in part.  
 Copy and/or distribution without expressed Midea consent is forbidden.

### 美的中央空调爆炸图 (Midea CAC Exploded view)

市场型号(Market model): MVA-48WN1-M18  
 产品型号(Product model): UL-KFR140V/N1X-M18  
 产品编码(Product code): 22023011001030  
 电源规格(Power supply): 208And230V\_1Ph,FREQUENCY\_60HZ 导出时间(Output time): 2017-04-17 10:42:41



序号	零部件名称	数量	物料编码	价格	代号
----	-------	----	------	----	----

No.	Chinese Name	Part Name	Quantity	BOM Code	Price	Model
1	上前侧板组件(SB3053)	Side board ass'y	1.0	12223000002212		UL-KF160V/N1X.4
2	接线柱	Wiring Terminal	1.0	11201708000008		JXZH-CuH62-a6.6bM
3	风道组件	Air channel ass'y	1.0	12223000002127		UL-KF160V/N1X.7
4	室内电控盒组件	E-part box ass'y	1.0	17223000000640		UL-KFR71V/N1X-M1
4.1	室内机主控板组件(插件)(中央)	Electronic control(display) box subas	1.0	17123000000700		UL-KFR71V/N1X-M1
4.2	电器安装板	Electric installation board	1.0	12223000002175		UL-KF105V/N1X.D.1
5	线性变压器	Transformer	1.0	11203103000141		TT220-EI66-24/150-I
6	底盘组件(SB3053)	Base ass'y	1.0	12223000002371		UL-KF160V/N1X.1
7	接水盘支撑焊合件I	Drainage pan supporting board	1.0	12223000001940		UL-KF160V/N1X.5
8	接水盘支撑焊合件II	Drainage pan supporting board	1.0	12223000001938		UL-KF160V/N1X.6
9	支撑条组件	Supporter ass'y	1.0	12223000002089		UL-KF160V/N1X.8
10	接水盘支撑焊合件IV	Drainage pan supporter ass'y	1.0	12223000001944		UL-KF160V/N1X.10
11	接水盘支撑焊合件III	Water tray supporting welding pieces	1.0	12223000001941		UL-KF160V/N1X.9
12	支撑条	Supporting bar	1.0	12223000002101		UL-KF160V/N1X-7
13	滤尘网盖板(SB3053,单面喷涂)	Cover board	1.0	12223000002003		UL-KF160V/N1X-8
14	蒸发器部件	Evaporator ass'y	1.0	15823000000618		UL-KFR140V/N1X-M
14.1	蒸发器I	Evaporator	1.0	15823000000634		UL-KFR105V/N1X-M
14.2	蒸发器II	Evaporator	1.0	15823000000635		UL-KFR105V/N1X-M
14.3	蒸发器输出管组件	Evaporator output pipe assembly	1.0	15123000001713		UL-KFR140V/N1X-M
14.4	蒸发器输入管组件	Evaporator input pipe ass'y	1.0	15423000000499		UL-KFR140V/N1X-M
14.4.1	分配器	Distributor	1.0	15500502000109		FPQ-1204BT
14.4.2	热力膨胀阀	thermostatic expansion valve	1.0	15500213000110		TR6-4TON(067U350
15	接水盘I(SB3053)	Drainage pan	1.0	12223000001212		UL-KF160V/N1X-11
16	接水盘组件	Drain pan ass'y	1.0	12123000000110		UL-KF160V/N1X.10A
17	接水盘固定块	Fixing board of water collector	1.0	12223000000028		UL-KF71V/N1X-21
18	接水盘拉条2	Bar 2, drainage pan	2.0	12223000002178		UL-KF71V/N1X-10(A
19	侧板组件(SB3053)	Side board ass'y	1.0	12223000002208		UL-MDVD160V/N1X
20	配管盖板组件(SB3053)	Cover plate ass'y	1.0	12223000002157		SA-KF71V/X.5
21	上侧板组件(SB3053)	Side panel ass'y, up	1.0	12223000002197		UL-KF160V/N1X.2
22	电机支架II	Supporter of fan motor	1.0	12223000001992		UL-KF71V/N1X-24
23	电机支架组件I	Supporter subassembly of fan motor	3.0	12223000001932		UL-KF71V/N1X.16
24	离心风轮	Centrifugal fan	1.0	12200102000026		LX-279*271*12.7-51,
25	无刷直流电机	Motor	1.0	11002015000058		ZKSD-560-12-1



—— 1

—— 2

—— 3

 —— 4

 —— 4.1

 —— 4.2

 —— 5

备注

Remark