



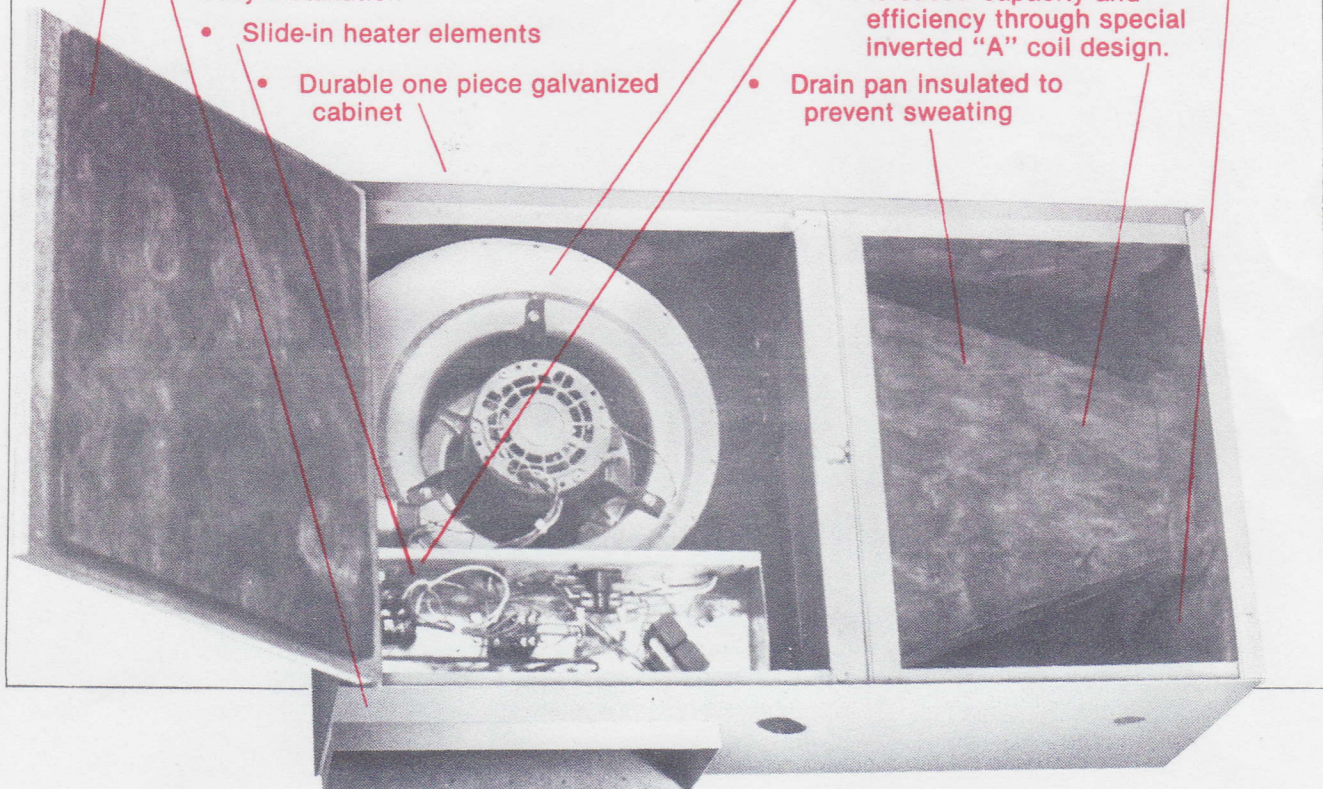
# Red T Coil

## RTH SERIES

## HORIZONTAL FAN COIL

### Features:

- Unit can be serviced from conditioned area
- Insulated blower compartment door combined with filter grill access door make for quieter operation.
- Recessed cabinet lip provides easy installation
- Slide-in heater elements
- Durable one piece galvanized cabinet
- Special blower housing design allows for 1 - step removal of blower wheel and motor.
- All electrical components easily serviced
- Sweat refrigerant connections easily accessible
- Increased capacity and efficiency through special inverted "A" coil design.
- Drain pan insulated to prevent sweating



# RTH SERIES: General Specifications and Engineering Data

## Blower Performance

See Footnotes

Model No.	.10''wc	.20''wc	.30''wc	.40''wc
RTHX-18 (3)	798	763	735	701
RTHX-24 (3)	884	848	816	778
RTHX-30 (3)	939	905	871	833

1. Tested with wet coil.
2. Access door and filter installed during test.
3. SCFM at given external static pressure.
4. Specifications subject to change without notice.

## Electrical Characteristics

See Footnotes

Model No.	KW Rating Of Element @ 240 V.	Blower Motor KW	Minimum Circuit Ampacity	Maximum (1) Fuse Size	(75°C) Wire Size
RTHX-18- 0	0	.35	2.5	15	14
3	3	.35	18.1	20	12
5	5	.35	28.7	30	10
6	6	.35	33.8	35	8
8	8	.35	44.1	45	8
10	10	.35	54.5	60	6
RTHX-24- 0	0	.35	2.5	15	14
3	3	.35	18.1	20	12
5	5	.35	28.7	30	10
6	6	.35	33.8	35	8
8	8	.35	44.1	45	8
10	10	.35	54.5	60	6
RTHX-30- 0	0	.35	2.5	15	14
3	3	.35	18.1	20	12
5	5	.35	28.7	30	10
6	6	.35	33.8	35	8
8	8	.35	44.1	45	8
10	10	.35	54.5	60	6

1. Unit is approved for use with HACR type breakers in lieu of fuse.
2. All name plates marked 240/208 - 1 60Hz.
3. Specifications subject to change without notice.

## Heating Capacities

Model No.	3KW		5KW		6KW		8KW		10KW	
	208V	240V	208V	240V	208V	240V	208V	240V	208V	240V
RTHX-18	9000	11,500	14,200	18,300	16,500	21,700	21,700	28,500	26,800	35,300
RTHX-24	9000	11,500	14,200	18,300	16,500	21,700	21,700	28,500	26,800	35,300
RTHX-30	9000	11,500	14,200	18,300	16,500	21,700	21,700	28,500	26,800	35,300

## Cooling Capacities

See Footnotes

Model No.	@ 40° (1)	@ 45° (1)	@ 50° (1)
RTHX-18	24,600	19,600	14,600
RTHX-24	28,400	24,100	18,600
RTHX-30	33,600	29,800	23,400

1. Evaporator temperature.
2. 80°/67° entering air @ nominal air flow.
3. Specifications subject to change without notice.

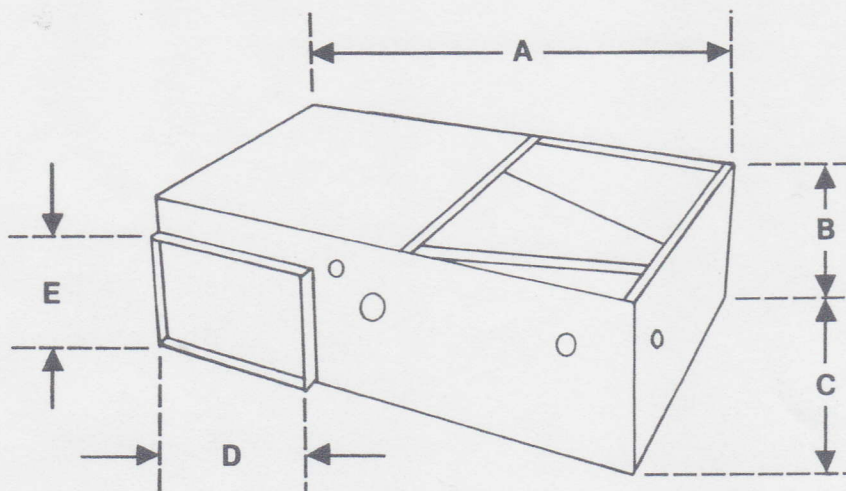
## General Specifications

See Footnotes

Model No.		RTHX-18	RTHX-24	RTHX-30
Voltage		208/240V	208/240V	208/240V
Tube Size		5/16	5/16	5/16
Refrig. Connections	Suction	5/8	5/8	5/8
	Liquid	3/8	3/8	3/8
Filter Size		16x20x1	16x20x1	20x20x1
Drain Size M.P.T.		3/4	3/4	3/4
Gross Wt.		71.5	75	79

1. Specifications subject to change without notice.

# Dimensions: RTH Series



MODEL	A	B	C	D	E
RTHX-18	36 1/4	12 1/2	20 1/2	15 1/4	7 1/4
RTHX-24	36 1/4	12 1/2	20 1/2	15 1/4	7 1/4
RTHX-30	40 1/4	12 1/2	20 1/2	15 1/4	7 1/4

## Model No. Identification:

RTHX	18	F	3
Application	Cooling Capacity	Optional Metering Device	Heating Capacity
	18,000		3 - 3 kw
RTHX - RED T	24,000	F-Florator	5 - 5 kw
Horizontal Fan Coil	30,000	X-Expansion Valve	6 - 6 kw
	(Representative)		8 - 8 kw
			10 - 10 kw



6IK1



Brochure 88 RTH  
Printed 1-88

RED T COIL, A Division of The Coleman Company, Inc.  
P.O. Drawer 2578, Nacogdoches, Texas 75963-2578  
(409) 560-3553



# Red T Coil