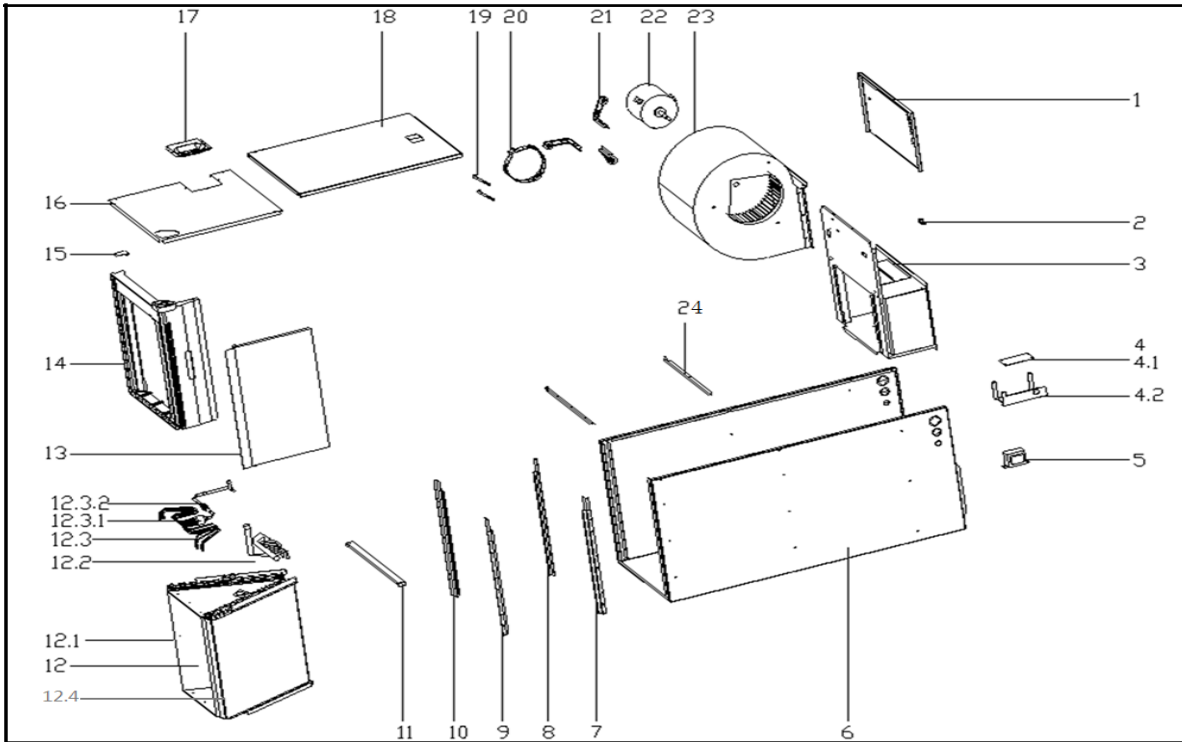
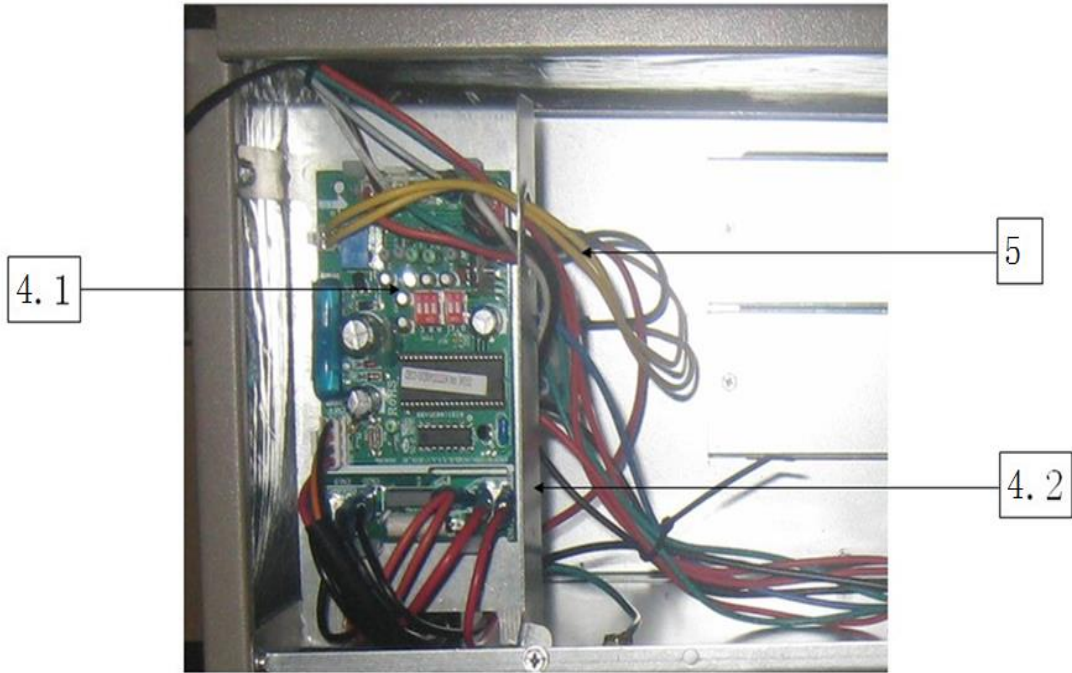


This document contains classified information.  
 All individuals are strictly forbidden from any form of disclosure in whole or in part.  
 Copy and/or distribution without expressed Midea consent is forbidden.

### 美的中央空调爆炸图 (Midea CAC Exploded view)

市场型号(Market model): MVA-4860WN1-M16P  
 产品型号(Product model): UL-KF160V/N1XP  
 产品编码(Product code): 22023011001013  
 电源规格(Power supply): Z08And230V\_1Pn,FREQUENCY\_ 导出时间(Output time): 2017-12-15 14:55:01  
 60Hz



序号	零部件名称	数量	物料编码	价格	代号	备注
----	-------	----	------	----	----	----

No.	Chinese Name	Part Name	Quantity	BOM Code	Price	Model	Remark
1	上前侧板组件(SB3053) RoHs U Side board ass'y		1.0	12223000002212		UL-KF160V/N1X.4	
2	接线柱 RoHS JXZH-CuH62-a6.6 Wiring Terminal		1.0	11201708000008		JXZH-CuH62-a6.6	
3	风道组件 RoHs UL-KF160V/N1 Air channel ass'y		1.0	12223000002127		UL-KF160V/N1X.7	
4	室内电控盒组件 RoHS UL-KF16E E-box ass'y		1.0	17223000000466		UL-KF160V/N1XP	
4.1	室内机主控板组件(贴片)(中央) F Main control board subassembly		1.0	17123000000402		UL-KF160V/N1XP	
4.2	电器安装板 UL-KF105V/N1X.D. Electric installation board		1.0	12223000002175		UL-KF105V/N1X.I	
5	线性变压器 RoHS TT220-EI66-2 Transformer		1.0	11203103000142		TT220-EI66-24/20	
6	底盘组件(SB3053) RoHs UL-KF Base ass'y		1.0	12223000002371		UL-KF160V/N1X.1	
7	接水盘支撑焊合件I RoHs UL-KF Drainage pan supporting board		2.0	12223000001940		UL-KF160V/N1X.6	
11	滤尘网盖板(SB3053,单面喷涂) I Cover board		1.0	12223000002003		UL-KF160V/N1X.4	
12	蒸发器部件 RoHS UL-KFR140V Evaporator ass'y		1.0	15823000000494		UL-KFR140V/N1X	
12.1	蒸发器I RoHS UL-KF160V/N1X. Evaporator I		1.0	15823000000649		UL-KF160V/N1X.2	
12.2	输出管组件 RoHS UL-KFR160V Output pipe ass'y		1.0	15123000001712		UL-KFR160V/N1X	
12.3	输入管组件 RoHS EAIR-KFR14 Input tube components		1.0	15423000002723		EAIR-KFR140V/N	
12.3.1	分配器 RoHS FPQ-1204BT Distributor		1.0	15500502000109		FPQ-1204BT	
12.3.2	节流阀 RoHS JLF(H)-090 Throttle valve		1.0	15500210000258		JLF(H)-090	
12.4	蒸发器II RoHS UL-KF160V/N1X Evaporator II		1.0	15823000000638		UL-KF160V/N1X.2	
13	接水盘II(SB3053) RoHs UL-KF1 Drainage pan		1.0	12223000001212		UL-KF160V/N1X.1	
14	接水盘组件 RoHS UL-KF160V/N Drain pan ass'y		1.0	12123000000110		UL-KF160V/N1X.1	
15	接水盘固定块 RoHS UL-KF71V Water pan cushion		1.0	12223000000028		UL-KF71V/N1X-2	
16	下侧板组件(SB3053) RoHs UL-I Underside board ass'y		1.0	12223000002229		UL-KF160V/N1X.3	
17	配管盖板组件(SB3053) RoHs S. Cover plate ass'y		1.0	12223000002157		SA-KF71V/X.5	
18	上侧板组件(SB3053) RoHs UL-I Side panel ass'y, up		1.0	12223000002197		UL-KF160V/N1X.2	
19	接水盘拉条2 UL-KF71V/N1X-10 Bar 2, drainage pan		2.0	12223000002178		UL-KF71V/N1X-10	
20	电机支架 II RoHS UL-KF71V/N Supporter of fan motor		1.0	12223000001992		UL-KF71V/N1X-2	
21	电机支架组件I RoHS UL-KF71V Supporter subassembly of fan m		3.0	12223000001932		UL-KF71V/N1X.16	
22	无刷直流电机 RoHS ZKSD-735- Brushless DC Motor		1.0	11002015000165		ZKSD-735-8-1	
23	离心风轮 RoHS LX-279*271*12. Centrifugal fan		1.0	12200102000026		LX-279*271*12.7-1	
24	支撑条组件 RoHs UL-KF160V/N Supporter ass'y		1.0	12223000002089		UL-KF160V/N1X.8	

|