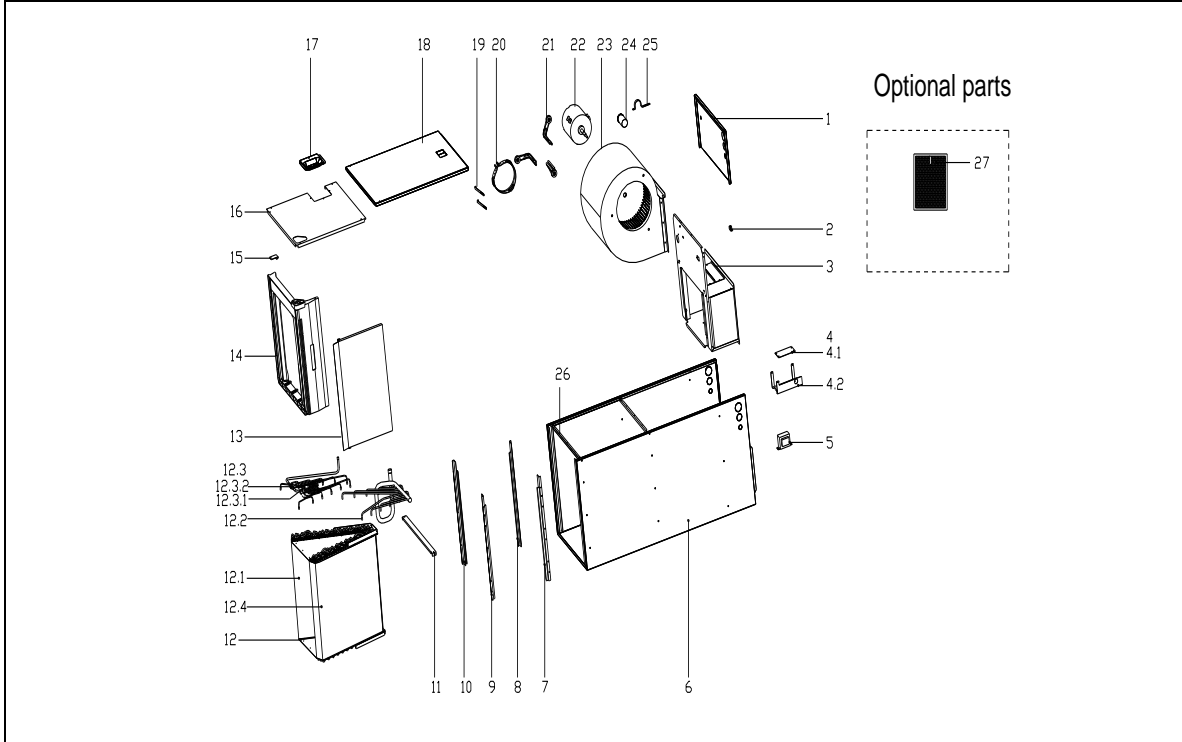


This document contains classified information.
 All individuals are strictly forbidden from any form of disclosure in whole or in part.
 Copy and/or distribution without expressed Midea consent is forbidden.

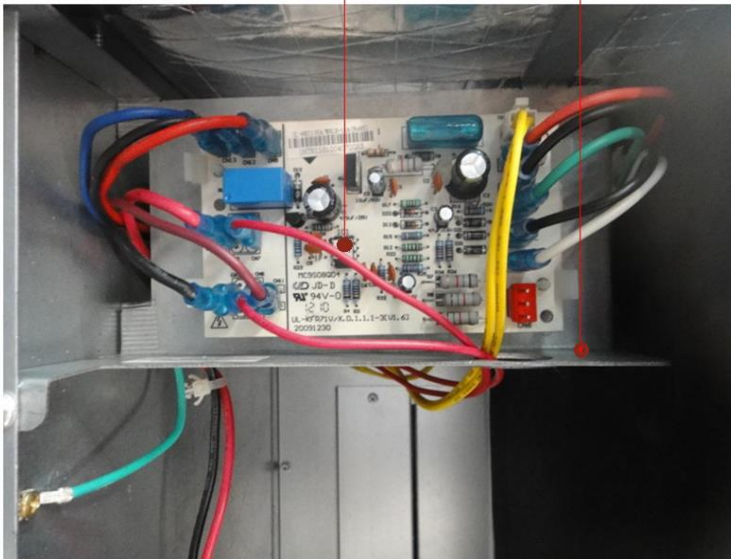
美的中央空调爆炸图 (Midea CAC Exploded view)

市场型号(Market model): MVA-42N1C
 产品型号(Product model): UL-KF120V/N1X-C
 产品编码(Product code): 22023011000938
 电源规格(Power supply): 208And230V_1Pn,FREQUENCY_60HZ 导出时间(Output time): 2017-12-15 14:42:44



4.1

4.2



| 序号 | 零部件名称 | 数量 | 物料编码 | 价格 | 代号 | 备注 |
|----|-------|----|------|----|----|----|
|----|-------|----|------|----|----|----|

| No. | Chinese Name | Part Name | Quantity | BOM Code | Price | Model | Remark |
|--------|---------------------------|--------------------------------|----------|-----------------|-------|-------------------|--------|
| 1 | 上前侧板组件(SB3053) RoHs U | Side board ass'y | 1.0 | 12223000002212 | | UL-KF160V/N1X.4 | |
| 2 | 接线柱 RoHS JXZH-CuH62-a6.6 | Wiring Terminal | 1.0 | 11201708000008 | | JXZH-CuH62-a6.6 | |
| 3 | 风道组件 RoHs UL-KF160V/N1 | Air channel ass'y | 1.0 | 122230000002127 | | UL-KF160V/N1X.7 | |
| 4 | 室内电控盒组件 RoHS UL-KF16 | E-part box ass'y | 1.0 | 172230000000470 | | UL-KF160V/N1X-I | |
| 4.1 | 室内主控板组件(中央) RoHS UL | Main control board subassembly | 1.0 | 171277000000037 | | UL-WKC105A/MN | |
| 4.2 | 电器安装板 UL-KF105V/N1X.D. | Electric installation board | 1.0 | 122230000002175 | | UL-KF105V/N1X.I | |
| 5 | 线性变压器 RoHS TT220-EI66-2 | Transformer | 1.0 | 11203103000141 | | TT220-EI66-24/15 | |
| 6 | 底盘组件(SB3053) RoHs UL-KF | Base ass'y | 1.0 | 122230000002371 | | UL-KF160V/N1X.1 | |
| 7 | 接水盘支撑焊合件I RoHs UL-KF | Drainage pan supporting board | 2.0 | 122230000001940 | | UL-KF160V/N1X.6 | |
| 11 | 滤尘网盖板(SB3053,单面喷涂) | Filter Cover board | 1.0 | 122230000002003 | | UL-KF160V/N1X-6 | |
| 12 | 蒸发器部件 RoHS UL-KFR120V | Evaporator ass'y | 1.0 | 158230000000995 | | UL-KFR120V/N1X | |
| 12.1 | 蒸发器I RoHS UL-KF160V/N1X. | Evaporator I | 1.0 | 158230000000649 | | UL-KF160V/N1X.2 | |
| 12.2 | 输出管组件 RoHS UL-KFR120V | Output tube components | 1.0 | 151230000005287 | | UL-KFR120V/N1X | |
| 12.3 | 输入管组件 RoHS EAIR-KF125V | Input tube components | 1.0 | 154230000000529 | | EAIR-KF125V/N1 | |
| 12.3.1 | 分配器 RoHS FPQ-1204BT | Distributor | 1.0 | 15500502000109 | | FPQ-1204BT | |
| 12.3.2 | 节流阀 RoHS JLF(H)-080 | Throttle valve | 1.0 | 15500210000182 | | JLF(H)-080 | |
| 12.4 | 蒸发器II RoHS UL-KF160V/N1X | Evaporator II | 1.0 | 158230000000638 | | UL-KF160V/N1X.2 | |
| 13 | 接水盘II(SB3053) RoHs UL-KF1 | Drainage pan | 1.0 | 122230000001212 | | UL-KF160V/N1X-1 | |
| 14 | 接水盘组件 RoHS UL-KF160V/N | Drain pan ass'y | 1.0 | 121230000000110 | | UL-KF160V/N1X.1 | |
| 15 | 接水盘固定块 RoHS UL-KF71V | Water pan cushion | 1.0 | 122230000000028 | | UL-KF71V/N1X-2 | |
| 16 | 下侧板组件(SB3053) RoHs UL-I | Underside board ass'y | 1.0 | 122230000002229 | | UL-KF160V/N1X.3 | |
| 17 | 配管盖板组件(SB3053) RoHs S. | Cover plate ass'y | 1.0 | 122230000002157 | | SA-KF71V/X.5 | |
| 18 | 上侧板组件(SB3053) RoHs UL-I | Side panel ass'y, up | 1.0 | 122230000002197 | | UL-KF160V/N1X.2 | |
| 19 | 接水盘拉条2 UL-KF71V/N1X-10 | Bar 2, drainage pan | 2.0 | 122230000002178 | | UL-KF71V/N1X-10 | |
| 20 | 电机支架 II RoHS UL-KF71V/N | Supporter of fan motor | 1.0 | 122230000001992 | | UL-KF71V/N1X-2 | |
| 21 | 电机支架组件I RoHS UL-KF71V | Supporter subassembly of fan m | 3.0 | 122230000001932 | | UL-KF71V/N1X.16 | |
| 22 | 单相异步电机 RoHS YKS-270-6 | Single phase asynchronous mot | 1.0 | 11002012001226 | | YKS-270-6-9 | |
| 23 | 风轮部件 RoHS LX-279*271*12. | Fan assembly | 1.0 | 12200101000029 | | LX-279*271*12.7-1 | |
| 24 | 压缩机电容 RoHS 10uF/450V-P | Capacitor of compressor | 1.0 | 17400103000154 | | 10uF/450V-P2(200 | |
| 25 | 接水盘拉条 UL-KF71V/N1X-10 | Drainage pan clamp | 1.0 | 122230000002177 | | UL-KF71V/N1X-10 | |
| 26 | 支撑条 UL-KF160V/N1X-7 | Supporting bar | 1.0 | 122230000002101 | | UL-KF160V/N1X-7 | |

