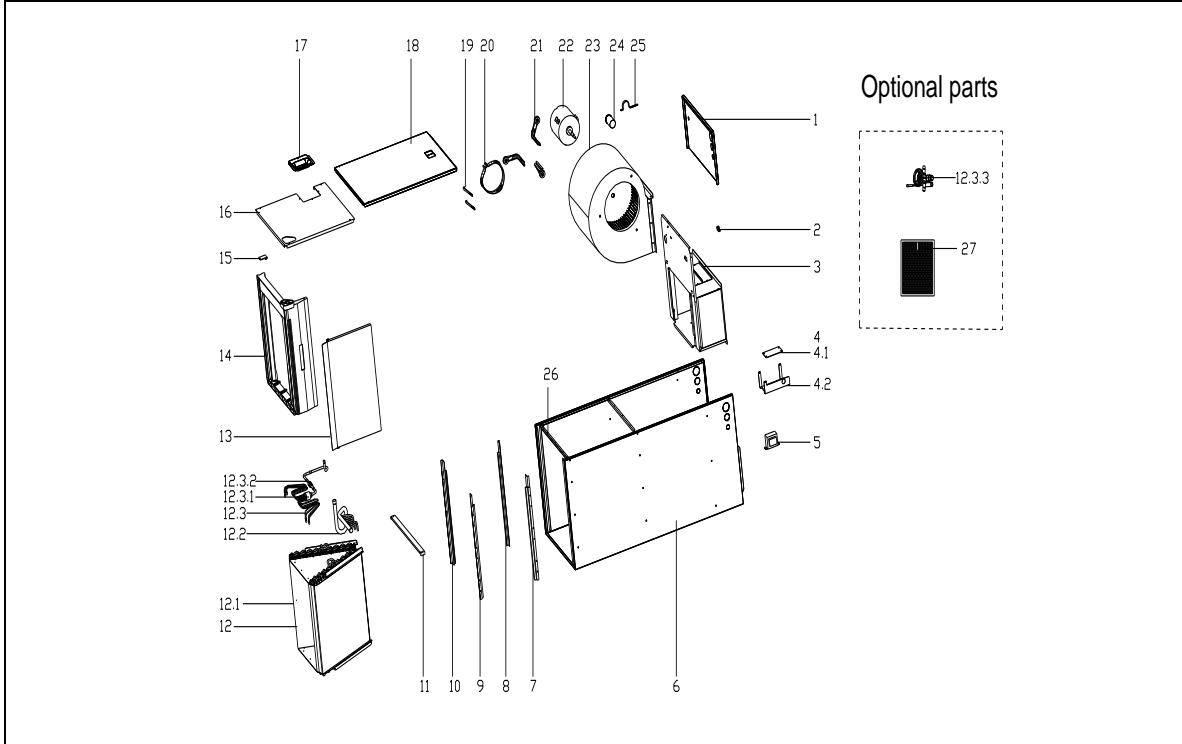


This document contains classified information.  
 All individuals are strictly forbidden from any form of disclosure in whole or in part.  
 Copy and/or distribution without expressed Midea consent is forbidden.

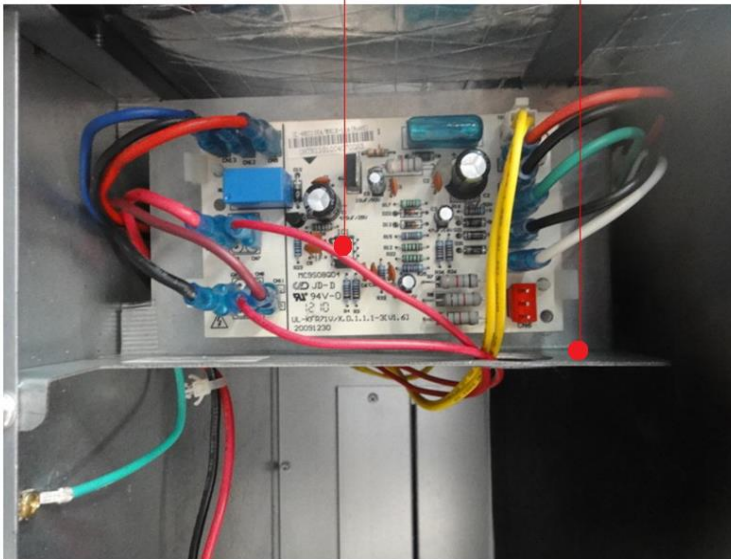
### 美的中央空调爆炸图 (Midea CAC Exploded view)

市场型号(Market model): MVA-18HWN1-M13  
 产品型号(Product model): UL-KFR53V/N1X[A]  
 产品编码(Product code): 22023011001075  
 电源规格(Power supply): 2U8And230V\_1Pn,FREQUENCY\_60HZ  
 导出时间(Output time): 2017-12-15 14:42:39



4.1

4.2



序号	零部件名称	数量	物料编码	价格	代号	备注
----	-------	----	------	----	----	----

No.	Chinese Name	Part Name	Quantity	BOM Code	Price	Model	Remark
1	上前侧板组件(SB3053) RoHS U Side board ass'y		1.0	12223000002195		UL-KF71V/N1X.4	
2	接线柱 RoHS JXZH-CuH62-a6.6 Wiring Terminal		1.0	11201708000008		JXZH-CuH62-a6.6	
3	风道组件 RoHS UL-KF71V/N1X. Air duct ass'y		1.0	122230000002125		UL-KF71V/N1X.12	
4	室内电控盒组件 RoHS UL-KF71 E-part box ass'y		1.0	17223000000479		UL-KF71V/N1X.D	
4.1	室内主控板组件(中央) RoHS UL Main control board subassembly		1.0	171277000000037		UL-WKC105A/MN	
4.2	电器安装板 UL-KF71V/N1X.D.1 Electric installation board		1.0	122230000002167		UL-KF71V/N1X.D	
5	线性变压器 RoHS TT220-EI66-2 Transformer		1.0	11203103000141		TT220-EI66-24/15	
6	底盘组件(SB3053) RoHS UL-KF Base ass'y		1.0	122230000002367		UL-KF71V/N1X.1	
8	接水盘支撑焊合件II RoHS UL-KI Drainage pan supporting board		2.0	122230000001943		UL-KF71V/N1X.6	
10	接水盘支撑焊合件III REACH,Ro Drainage pan supporter III		2.0	122230000010766		UL-KF71V/N1X.16	
11	滤尘网盖板(SB3053,单面喷涂) Cover board		1.0	122230000002004		UL-KF71V/N1X-6	
12	蒸发器部件 RoHS UL-KF53V/N Evaporator ass'y		1.0	158230000000992		UL-KF53V/N1X[A]	
12.1	蒸发器(亲水/1.6) RoHS UL-KF7 Evaporator		2.0	158230000000654		UL-KF71V/N1X.ZI	
12.2	输出管组件 RoHS UL-KF71V/N Output pipe ass'y		1.0	151230000001694		UL-KF71V/N1X.ZI	
12.3	输入管组件 RoHS UL-KF53V/N Input pipe ass'y		1.0	154230000000571		UL-KF53V/N1X[A]	
12.3.1	分配器 RoHS FPQ-0804BT Distributor		1.0	155005020000051		FPQ-0804BT	
12.3.2	节流阀 RoHS JLF(H)-052 Throttle		1.0	15500210000464		JLF(H)-052	
13	接水盘II(SB3053) RoHS UL-KF7 Drainage pan		1.0	122230000001211		UL-KF71V/N1X-1	
14	接水盘组件 RoHS UL-KF71V/N Drain pan ass'y		1.0	121230000000099		UL-KF71V/N1X.16	
15	接水盘固定块 RoHS UL-KF71V Water pan cushion		1.0	122230000000028		UL-KF71V/N1X-2	
16	下侧板组件(SB3053) RoHS UL-I Underside board ass'y		1.0	122230000002194		UL-KF71V/N1X.3	
17	配管盖板组件(SB3053) RoHS S. Cover plate ass'y		1.0	122230000002157		SA-KF71V/X.5	
18	上侧板组件(SB3053) RoHS UL-I Upside board ass'y		1.0	122230000002219		UL-KF71V/N1X.2	
19	接水盘拉条2 UL-KF71V/N1X-10 Bar 2, drainage pan		2.0	122230000002178		UL-KF71V/N1X-10	
20	电机支架II RoHS UL-KF71V/N Supporter of fan motor		1.0	122230000001992		UL-KF71V/N1X-2	
21	电机支架组件I RoHS UL-KF71V Supporter subassembly of fan m		3.0	122230000001932		UL-KF71V/N1X.16	
22	单相异步电机 RoHS YKS-100-6 Single phase asynchronous mot		1.0	11002012002363		YKS-100-6-12	
23	风轮部件 RoHS LX-270*207*12. Fan ass'y		1.0	122001010000018		LX-270*207*12.7	
24	压缩机电容 RoHS 6uF/450V-P2 Capacitor		1.0	17400103000152		6uF/450V-P2(2000	
25	接水盘拉条 UL-KF71V/N1X-10 Drainage pan clamp		1.0	122230000002177		UL-KF71V/N1X-10	
26	支撑条 RoHS UL-KF71V/N1X-7 Supporting bar		1.0	122230000000417		UL-KF71V/N1X-7	

