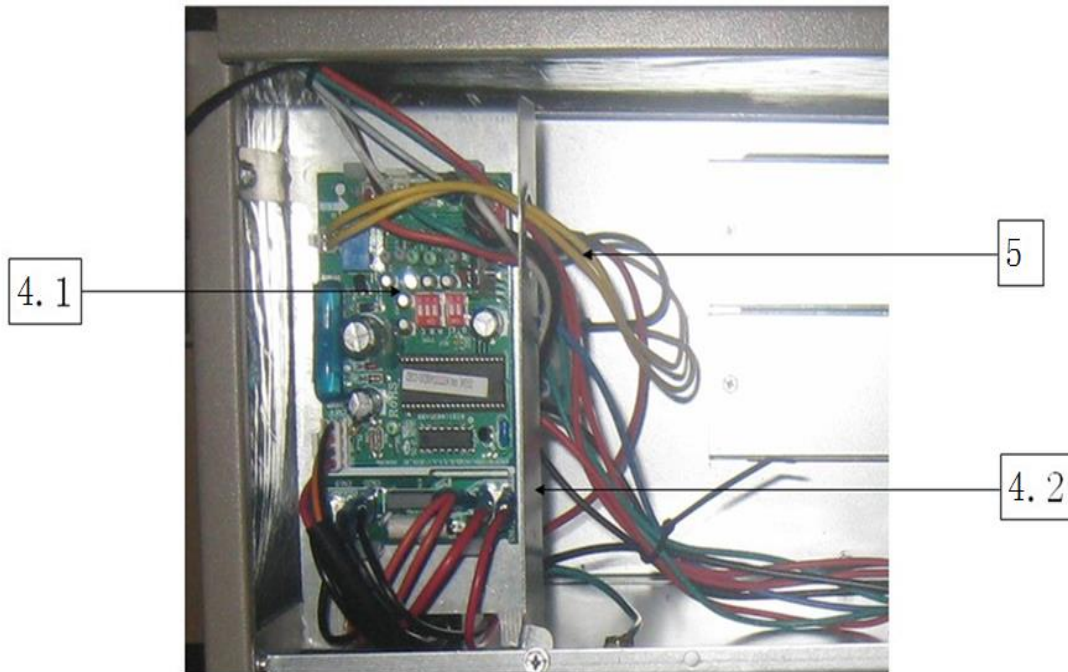
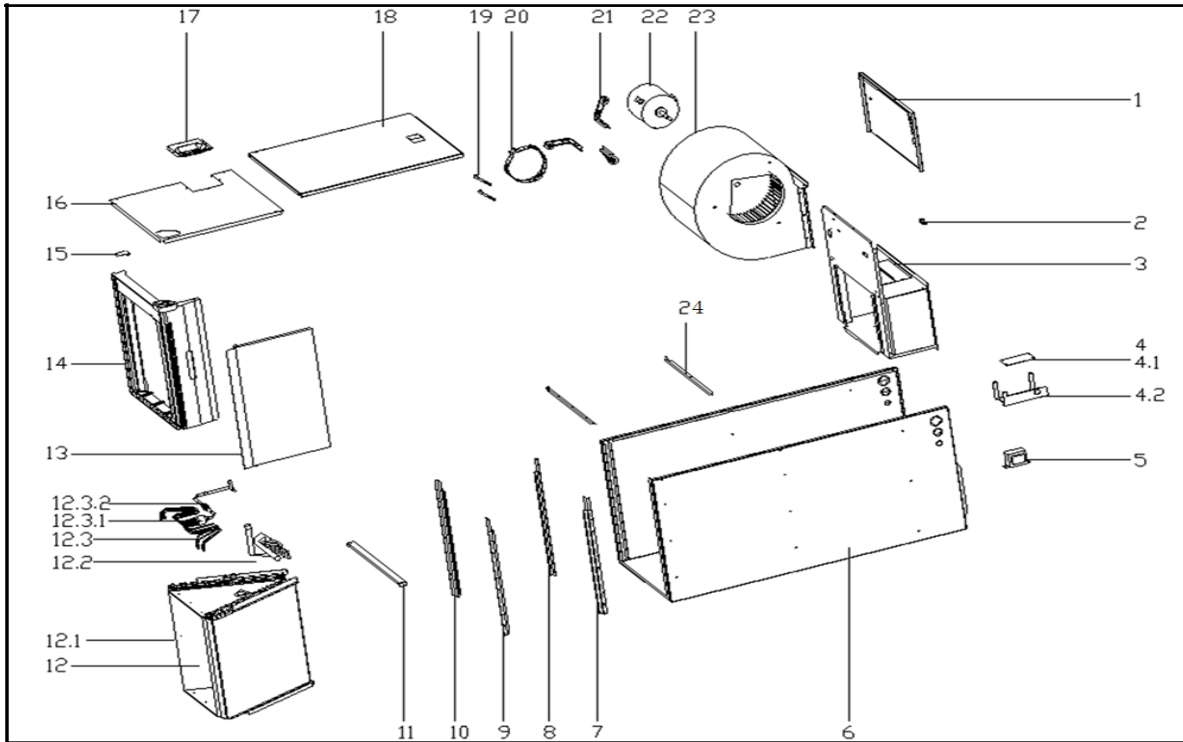


This document contains classified information.
 All individuals are strictly forbidden from any form of disclosure in whole or in part.
 Copy and/or distribution without expressed Midea consent is forbidden.

美的中央空调爆炸图 (Midea CAC Exploded view)

市场型号(Market model): MVA-1830WN1-M16P
 产品型号(Product model): UL-KF90V/N1XP
 产品编码(Product code): 22023011001001
 电源规格(Power supply): 208And230V_1Pn,FREQUENCY_60HZ
 导出时间(Output time): 2017-12-15 14:54:56



序号	零部件名称	数量	物料编码	价格	代号	备注
----	-------	----	------	----	----	----

No.	Chinese Name	Part Name	Quantity	BOM Code	Price	Model	Remark
1	上前侧板组件(SB3053) RoHS U	Side board ass'y	1.0	12223000002190		UL-KF105V/N1X.4	
2	接线柱 RoHS JXZH-CuH62-a6.6	Wiring Terminal	1.0	11201708000008		JXZH-CuH62-a6.6	
3	风道组件 RoHS UL-KF90V/N1XI	Duct components	1.0	122230000002124		UL-KF90V/N1XP.1	
4	室内电控盒组件 RoHS UL-KF9C	Indoor electronic control box con	1.0	172230000000486		UL-KF90V/N1XP.I	
4.1	室内主控板组件(贴片)(中央) Ro	Main control board subassembly	1.0	171230000000401		UL-KF90V/N1XP.I	
4.2	电器安装板 UL-KF105V/N1X.D.	Electric installation board	1.0	122230000002175		UL-KF105V/N1X.I	
5	线性变压器 RoHS TT220-EI66-2	Transformer	1.0	11203103000142		TT220-EI66-2/20	
6	底盘组件(SB3053) RoHS UL-KF	Base ass'y	1.0	122230000002373		UL-KF105V/N1X.1	
8	接水盘支撑焊合件II RoHS UL-KI	Drainage pan supporting board	2.0	122230000001935		UL-KF105V/N1X.6	
11	滤尘网盖板(SB3053,单面喷涂) I	Cover board	1.0	122230000001997		UL-KF105V/N1X.6	
12	蒸发器部件 RoHS UL-KF90V/N	Evaporator parts	1.0	158230000000480		UL-KF90V/N1XP.2	
12.1	蒸发器(亲水/1.6) RoHS UL-KF1	Evaporator	2.0	158230000000624		UL-KF105V/N1X.2	
12.2	输出管组件 RoHS UL-KF105V/	Outlet tube components	1.0	151230000001699		UL-KF105V/N1XB	
12.3	输入管组件 RoHS UL-KF90V/N	Enter the tube assembly	1.0	154230000000479		UL-KF90V/N1XP.2	
12.3.1	分配器 RoHS FPQ-0804BT	Distributor	1.0	155005020000051		FPQ-0804BT	
12.3.2	节流阀 RoHS JLF(H)-068	Throttle	1.0	155002100000473		JLF(H)-068	
13	接水盘II(SB3053) RoHS UL-KF1	Drainage pan	1.0	122230000001206		UL-KF105V/N1X.7	
14	接水盘组件 RoHS UL-KF105V/	Drain pan ass'y	1.0	121230000000114		UL-KF105V/N1X.1	
15	接水盘固定块 RoHS UL-KF71V/	Water pan cushion	1.0	122230000000028		UL-KF71V/N1X-2	
16	下侧板组件(SB3053) RoHS UL-I	Underside board ass'y	1.0	122230000002226		UL-KF105V/N1X.3	
17	配管盖板组件(SB3053) RoHS S.	Cover plate ass'y	1.0	122230000002157		SA-KF71V/X.5	
18	上侧板组件(SB3053) RoHS UL-I	Side board ass'y	1.0	122230000002213		UL-KF105V/N1X.2	
19	接水盘拉条2 UL-KF71V/N1X-10	Bar 2, drainage pan	2.0	122230000002178		UL-KF71V/N1X-10	
20	电机支架 II RoHS UL-KF71V/N	Supporter of fan motor	1.0	122230000001992		UL-KF71V/N1X-2	
21	电机支架组件I RoHS UL-KF71V	Supporter subassembly of fan m	3.0	122230000001932		UL-KF71V/N1X.16	
22	无刷直流电机 RoHS ZKSD-370-	Brushless DC Motor	1.0	11002015000210		ZKSD-370-8-1	
23	离心风机 RoHS LX-282*245*12.	centrifuge fan	1.0	122001020000003		LX-282*245*12.7-	
24	支撑条组件 RoHS UL-KF105V/	Supporter assembly	1.0	122230000002184		UL-KF105V/N1X.4	

Vertical line on the left side of the page.