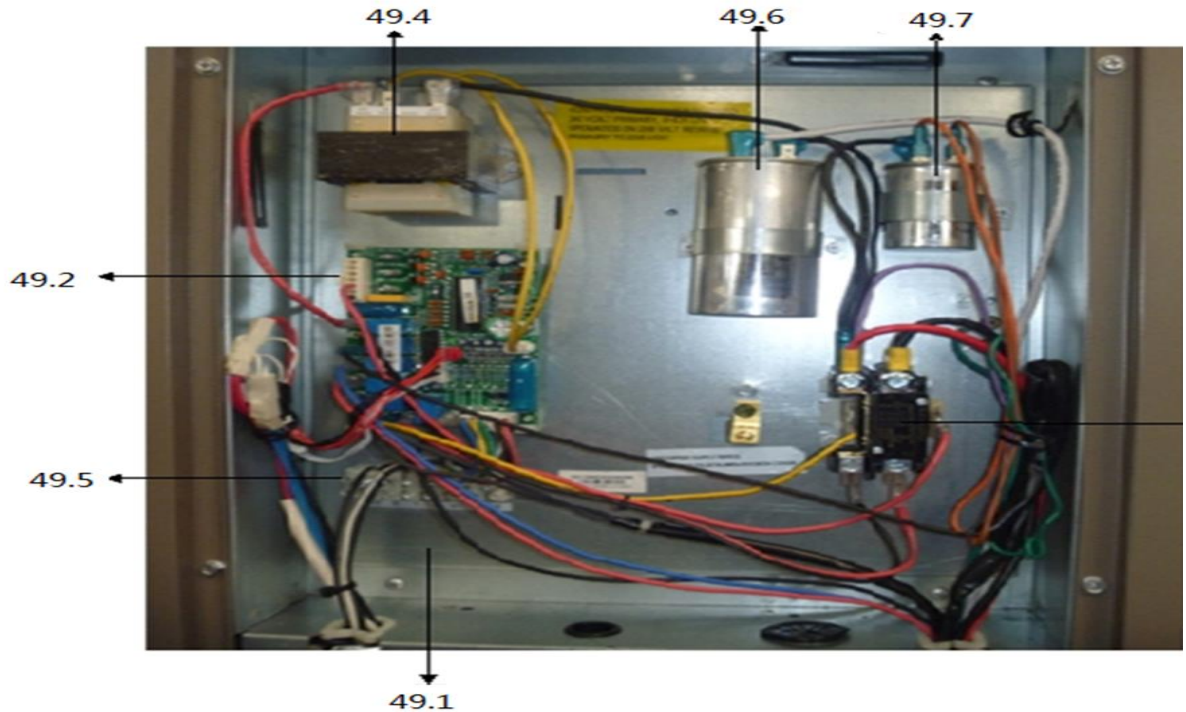
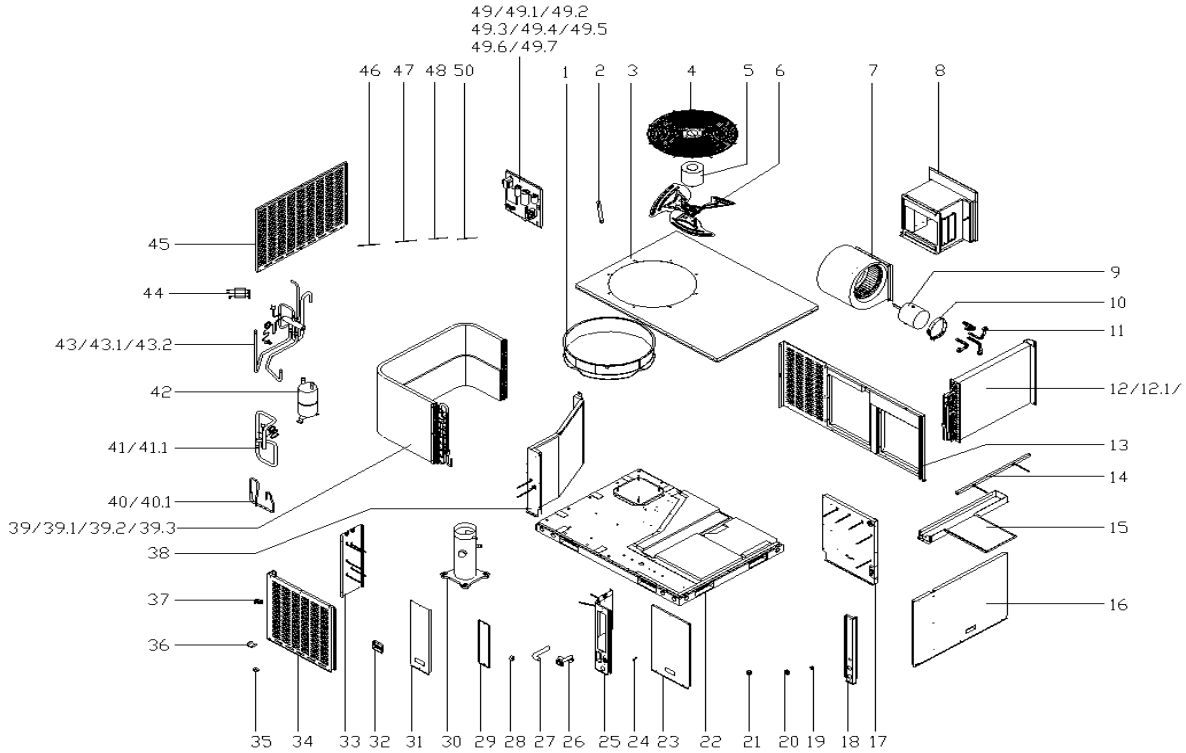


This document contains classified information.
 All individuals are strictly forbidden from any form of disclosure in whole or in part.
 Copy and/or distribution without expressed Midea consent is forbidden.

美的中央空调爆炸图 (Midea CAC Exploded view)

市场型号(Market model): MRC-36HWN1-M14L
 产品型号(Product model): UL-WKR105B/MN1X-14A
 产品编码(Product code): 22027710000398
 电源规格(Power supply): 208And230V_1Ph,FREQUENCY_60HZ 导出时间(Output time): 2017-04-17 10:20:56



序号	零部件名称	数量	物料编码	价格	代号
----	-------	----	------	----	----

No.	Chinese Name	Part Name	Quantity	BOM Code	Price	Model
1	导风圈(黑色)	Ventilation	1.0	12127700000006		UL-WKG160S130A/
2	过线导管	Pipe	1.0	12123000000252		UL-KF90W/N1-541
3	顶盖组件(SB3074)	Top cover assembly	1.0	12227700004098		UL-WKR105B/MN1X
4	顶盖网罩	Grille, top cover	1.0	12923000000028		HVA-KF90W/N1-54
5	单相异步电机	Motor	1.0	11002012000506		YKS-110-8-6
6	轴流风叶	Propeller fan	1.0	12200104000014		ZL-560*125*12.7
7	风轮部件	Centrifugal fan	1.0	12200101000054		LX-261*234*12.7
8	风道组件	Air duct ass'y	1.0	12227700003727		UL-WKR105B/MN1X
9	无刷直流电机	Brushless DC Motor	1.0	11002015001041		ZKSD-370-12-3
10	电机支架II	Motor bracket II	1.0	12223000001993		UL-KF160V/X-2
11	电机支架组件I	Supporter subassembly of fe	4.0	12223000001932		UL-KF71V/N1X. 16
12	蒸发器部件	Evaporator ass'y	1.0	15827700000468		UL-WKR105B/MN1X
12.1	蒸发器(亲水/1.5)	Evaporator	1.0	15827700000469		UL-WKR105B/MN1X
12.2	蒸发器输入管组件	Input pie ass'y	1.0	15127700004494		UL-WKR105B/MN1X
12.3	蒸发器输出管组件	Evaporator output pipe ass'	1.0	15127700004172		UL-WKR105B/MN1X
12.4	蒸发器连接板组件	Condenser connection board	1.0	12227700004061		UL-WKR105B/MN1X
13	内侧面板组件(SB3074)	Panel assembly, interior	1.0	12227700004089		UL-WKR105B/MN1X
14	横梁焊合件	Beam assembly	1.0	12227700004084		UL-WKR105B/MN1X
15	接水盘组件(SB3074)	Drainage pan assembly	1.0	12227700004072		UL-WKR105B/MN1X
16	内侧面板组件(SB3074)	Panel assembly, interior	1.0	12227700004079		UL-WKR105B/MN1X
17	蒸发器连接板组件	Condenser connection board	1.0	12227700004081		UL-WKR105B/MN1X
18	立柱组件(SB3074)	Pole ass'y	1.0	12227700004030		UL-WKR105B/MN1X
19	小过线圈	Wire clamp	1.0	12127700000003		CE-WK140/SX-A-1
20	过线胶圈	Wiring rubber ring	1.0	12100511000045		UL-GXQ-35
21	封口塞	seal plug	1.0	15500402000023		UL-KF71V/X. 2-9
22	底盘部件(SB3074)	Base ass'y	1.0	12227700004033		UL-WKR105B/MN1X
23	电控盒盖板(SB3074)	E-Part box cover	1.0	12227700004070		UL-WKR105B/MN1X
24	电线卡扣(黑色, SR-F41)	Wiring snaps	1.0	12100304000002		UL-WKR160A/MN1X
25	立柱组件(SB3074)	Pole assembly	1.0	12227700004094		UL-WKR105B/MN1X
26	出水接头(黑色)	Drain connector	1.0	12127700000012		UL-WKR71A/MN1X-
27	排水连接管(黑色)	Connecting pipe ass'y	1.0	12627700000036		UL-WKR105B/MN1X
28	喉箍18-32	Throat bander	2.0	12200201000001		HG21-38
29	盖板(SB3074)	Cover board	1.0	12227700004066		UL-WKR105B/MN1X
30	定速涡旋式压缩机	Fixed speed scroll compress	1.0	11102010000410		APG031KAA
31	盖板(SB3074)	Cover board	1.0	12227700004068		UL-WKR105B/MN1X
32	提手(S3025)	Handle	3.0	12100702000045		RF12WWC. 1. 4-2
33	中隔板焊合件	Partition board parts	1.0	12227700004077		UL-WKR105B/MN1X
34	防护板(SB3074)	preventer plate	1.0	12227700004063		UL-WKR105B/MN1X
35	压缩机脚垫	compressor feet base	4.0	12600401000024		KFR-43W-11S3L. J
36	冷凝器固定卡	Fixing clamp, condenser	4.0	12227700001945		UL-WKR160A/MN1X
37	整体自接式橡胶垫	rubber base	2.0	12600401000158		ZTZJSXJD-16(8)-
38	中隔板组件	Partition board assembly	1.0	12227700004086		UL-WKR105B/MN1X
39	冷凝器部件	Condenser ass'y	1.0	15827700000454		UL-WKR105B/MN1X
39.1	冷凝器(亲水/1.2)	Condenser	1.0	15827700000455		UL-WKR105B/MN1X
39.2	冷凝器输入管组件	Condenser inlet pipe ass'y	1.0	15127700004139		UL-WKR105B/MN1X
39.3	冷凝器输出管组件	Condenser outlet pipe ass'y	1.0	15127700004437		UL-WKR105B/MN1X
40	节流阀组件	Throttle ass'y	1.0	15427700000990		UL-WKR105B/MN1X
40.1	管道节流阀双向管道节流阀	Throttle	1.0	15500210000748		JLF(H)-052H/CO6
41	回气管组件	Suction pipe ass'y	1.0	15427700000991		UL-WKR105B/MN1X
41.1	压力控制器	Pressure switch	1.0	17400516000089		YK-0. 3/0. 14-200
42	贮液筒	Accumulator cylinder	1.0	15500508000082		ZYT-03E11EL
43	四通阀组件	4-Ways valve ass'y	1.0	15427700000992		UL-WKR105B/MN1X
43.1	四通阀套件	4-way valve	1.0	15500216000084		STF-03N1(UL)-24
43.2	压力控制器	Pressure switch	1.0	17400516000101		YK-4. 4/3. 2-2000
44	压缩机连接线组	Joint wires ass'y, compress	1.0	17401203001164		UL-WKC160A/MN1X
45	防护板(SB3074)	preventer plate	1.0	12227700004064		UL-WKR105B/MN1X
46	管温传感器	Pipe Temperature Sensor	1.0	11201007000412		CGQ-WD/GW4100-L
47	室温传感器	Room Temp. sensor ass'y	1.0	11201007000077		CGQ-WD/SW4100-L
48	接地线(绿色)	Ground wire	1.0	17401110000022		L2000Φ2. 1(AM5B

49	屋顶机电控盒组件	E-part box ass'y	1.0	17227700000348	UL-WKR105B/MN1X
49.1	电器安装板	Installation board	1.0	12227700003962	UL-WKR105B/MN1X
49.2	屋顶机主控板组件	Main PCB board ass'y	1.0	17127700000372	UL-WKR71A/MN1X-
49.3	交流接触器	AC contactor 24V	1.0	11203502000032	JCQ-40A-10-24VA
49.4	线性变压器	Transformer	1.0	11203103000142	TT220-E166-24/2
49.5	八位接线座	Wire joint, 8P	1.0	17400401000196	JXZ-PZ8Z
49.6	压缩机电容	Capacitor	1.0	17400103000150	45uF/450V-P2(20
49.7	压缩机电容	Capacitor	1.0	17400103000152	6uF/450V-P2(200
50	排气温控器	Discharge temp sensor	1.0	17400513000056	PQWKQ-130/90-20

12.2/12.3/12.4



→ 49.3

备注

Remark

