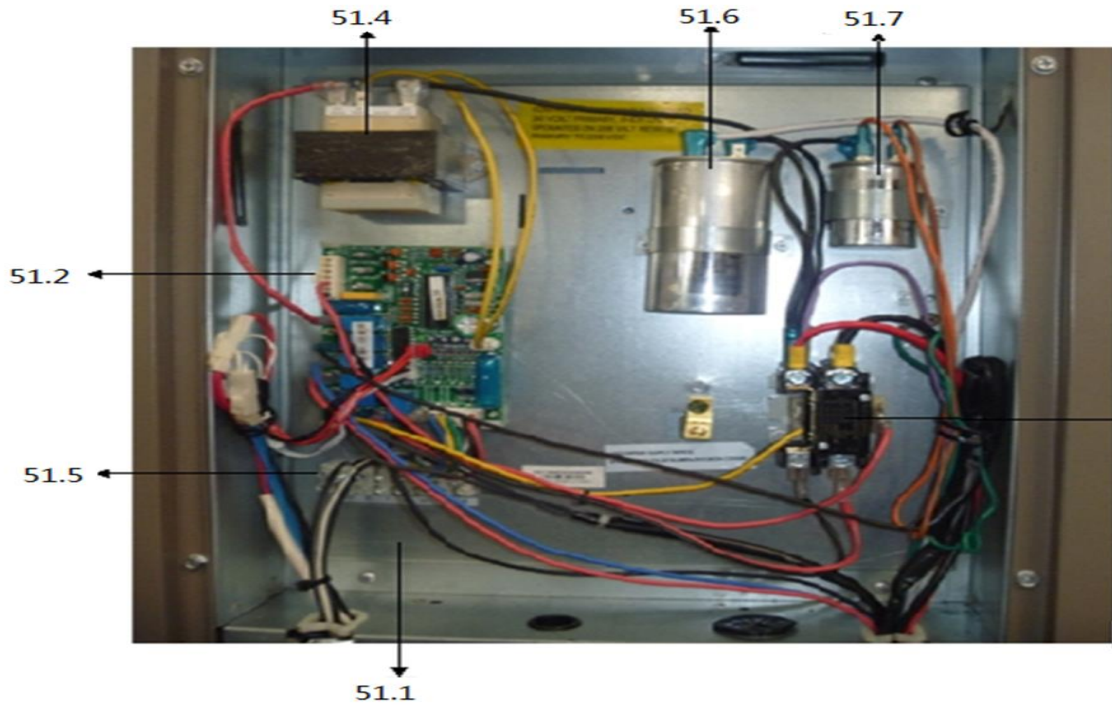
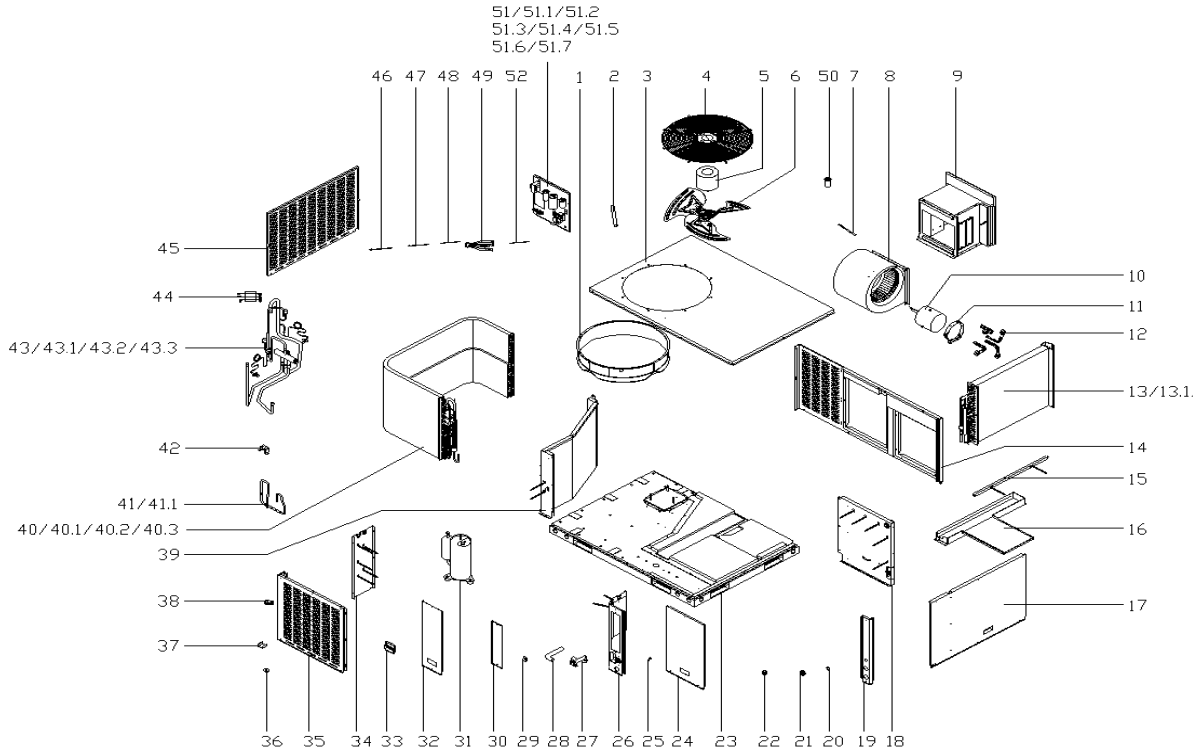


This document contains classified information.
 All individuals are strictly forbidden from any form of disclosure in whole or in part.
 Copy and/or distribution without expressed Midea consent is forbidden.

美的中央空调爆炸图 (Midea CAC Exploded view)

市场型号(Market model): MRC-24HWN1-M14T
 产品型号(Product model): UL-WKR71B/MN1X-14A
 产品编码(Product code): 22027710000400
 电源规格(Power supply): 208And230V_1Ph,FREQUENCY_60HZ 导出时间(Output time): 2017-04-17 10:21:42



序号	零部件名称	数量	物料编码	价格	代号
----	-------	----	------	----	----

No.	Chinese Name	Part Name	Quantity	BOM Code	Price	Model
1	导风圈(黑色)	Ventilation	1.0	12127700000006		UL-WKG160S130A/
2	过线导管	Pipe	1.0	12123000000252		UL-KF90W/N1-541
3	顶盖组件(SB3074)	Top cover assembly	1.0	12227700004098		UL-WKR105B/MN1X
4	顶盖网罩	Grille, top cover	1.0	12923000000028		HVA-KF90W/N1-54
5	单相异步电机	Single phase asynchronous m	1.0	11002012009400		YKS-85-6-4
6	轴流风叶	Propeller fan	1.0	12200104000030		ZL-560*85*12.7-
7	接水盘拉条	Drainage pan clamp	1.0	12223000002177		UL-KF71V/N1X-10
8	风轮部件	Centrifugal fan	1.0	12200101000054		LX-261*234*12.7
9	风道组件	Air duct ass'y	1.0	12227700003727		UL-WKR105B/MN1X
10	单相异步电机	Single phase asynchronous m	1.0	11002012000558		YKS-150-6-11
11	电机支架II	Motor bracket II	1.0	12223000001993		UL-KF160V/X-2
12	电机支架组件I	Supporter subassembly of fe	4.0	12223000001932		UL-KF71V/N1X.16
13	蒸发器部件	Evaporator ass'y	1.0	15827700000468		UL-WKR105B/MN1X
13.1	蒸发器(亲水/1.5)	Evaporator	1.0	15827700000469		UL-WKR105B/MN1X
13.2	蒸发器输入管组件	Input pie ass'y	1.0	15127700004494		UL-WKR105B/MN1X
13.3	蒸发器输出管组件	Evaporator output pipe ass'	1.0	15127700004172		UL-WKR105B/MN1X
13.4	蒸发器连接板组件	Condenser connection board	1.0	12227700004061		UL-WKR105B/MN1X
14	内侧面板组件(SB3074)	Panel assembly, interior	1.0	12227700004089		UL-WKR105B/MN1X
15	横梁焊合件	Beam assembly	1.0	12227700004084		UL-WKR105B/MN1X
16	接水盘组件(SB3074)	Drainage pan assembly	1.0	12227700004072		UL-WKR105B/MN1X
17	内侧面板组件(SB3074)	Panel assembly, interior	1.0	12227700004079		UL-WKR105B/MN1X
18	蒸发器连接板组件	Condenser connection board	1.0	12227700004081		UL-WKR105B/MN1X
19	立柱组件(SB3074)	Pole ass'y	1.0	12227700004030		UL-WKR105B/MN1X
20	小过线圈	Wire clamp	1.0	12127700000003		CE-WK140/SX-A-1
21	过线胶圈	Wiring rubber ring	1.0	12100511000045		UL-GXQ-35
22	封口塞	seal plug	1.0	15500402000023		UL-KF71V/X.2-9
23	底盘部件(SB3074)	Base ass'y	1.0	12227700004106		UL-WKR71B/MN1X-
24	电控盒盖板(SB3074)	E-Part box cover	1.0	12227700004070		UL-WKR105B/MN1X
25	电线卡扣(黑色,SR-F41)	Wiring snaps	1.0	12100304000002		UL-WKR160A/MN1X
26	立柱组件(SB3074)	Pole assembly	1.0	12227700004094		UL-WKR105B/MN1X
27	出水接头(黑色)	Drain connector	1.0	12127700000012		UL-WKR71A/MN1X-
28	排水连接管(黑色)	Connecting pipe ass'y	1.0	12627700000036		UL-WKR105B/MN1X
29	喉箍18-32	Throat bander	2.0	12200201000001		HG21-38
30	盖板(SB3074)	Cover board	1.0	12227700004066		UL-WKR105B/MN1X
31	定速旋转式压缩机	Fixed speed rotary compress	1.0	11103010000677		PA200M2CS-3MUU1
32	盖板(SB3074)	Cover board	1.0	12227700004068		UL-WKR105B/MN1X
33	提手(S3025)	Handle	3.0	12100702000045		RF12WWC.1.4-2
34	中隔板焊合件	Partition board parts	1.0	12227700004077		UL-WKR105B/MN1X
35	防护板(SB3074)	preventer plate	1.0	12227700004063		UL-WKR105B/MN1X
36	压缩机脚垫	compressor feet base	3.0	12600401000024		KFR-43W-11S3L.J
37	冷凝器固定卡	Fixing clamp, condenser	4.0	12227700001945		UL-WKR160A/MN1X
38	整体自接式橡胶垫	rubber base	2.0	12600401000158		ZTZJSXJD-16(8)-
39	中隔板组件	Partition board assembly	1.0	12227700004086		UL-WKR105B/MN1X
40	冷凝器部件	Condenser ass'y	1.0	15827700000470		UL-WKR71B/MN1X-
40.1	冷凝器(亲水/1.3)	Condenser	1.0	15827700000471		UL-WKR71B/MN1X-
40.2	冷凝器输入管组件	Input pie ass'y	1.0	15127700004175		UL-WKR71B/MN1X-
40.3	冷凝器输出管组件	Output pie ass'y	1.0	15127700004439		UL-WKR71B/MN1X-
41	节流阀组件	Throttle ass'y	1.0	15427700000997		UL-WKR71B/MN1X-
41.1	管道节流阀双向管道节流阀	Throttle	1.0	15500210000750		JLF(H)-045H/C06
42	配管支撑板	Pipe supporting board	1.0	12227700004102		UL-WKR105B/MN1X
43	四通阀组件	4-Ways valve ass'y	1.0	15427700000998		UL-WKR71B/MN1X-
43.1	四通阀套件	4-way valve	1.0	15500216000084		STF-03N1(UL)-24
43.2	压力控制器	Pressure switch	1.0	17400516000101		YK-4.4/3.2-2000
43.3	压力控制器	Pressure switch	1.0	17400516000089		YK-0.3/0.14-200
44	压缩机连接线组	Joint wires ass'y, compress	1.0	17401203001177		YSJ2100-P-RDU-B
45	防护板(SB3074)	preventer plate	1.0	12227700004064		UL-WKR105B/MN1X
46	管温传感器	Pipe Temperature Sensor	1.0	11201007000412		CGQ-WD/GW4100-L
47	室温传感器	Room Temp. sensor ass'y	1.0	11201007000077		CGQ-WD/SW4100-L
48	接地线(绿色)	Ground wire	1.0	17401110000022		L2000Φ2.1(AM5B

49	室内风机转接线组	Motor connecting wiring	1.0	17401203001022	PXQ-4/18#-L2200
50	压缩机电容	Capacitor	1.0	17400103000151	15uF/450V-P2(20
51	屋顶机电控盒组件	E-part box ass'y	1.0	17227700000366	UL-WKR71B/MN1X-
51.1	电器安装板	Installation board	1.0	122277000003962	UL-WKR105B/MN1X
51.2	屋顶机主控板组件	Main PCB board ass'y	1.0	17127700000372	UL-WKR71A/MN1X-
51.3	交流接触器	AC contactor 24V	1.0	11203502000032	JCQ-40A-10-24VA
51.4	线性变压器	Transformer	1.0	11203103000142	TT220-EI66-24/2
51.5	八位接线座	Wire joint, 8P	1.0	17400401000196	JXZ-PZ8Z
51.6	压缩机电容	Capacitor	1.0	17400103000148	50uF/450V-P2(20
51.7	压缩机电容	Capacitor	1.0	17400103000152	6uF/450V-P2(200
52	排气温控器	Discharge temp sensor	1.0	17400513000056	PQWKQ-130/90-20

/13.2/13.3/13.4

→ 51.3

备注

Remark

