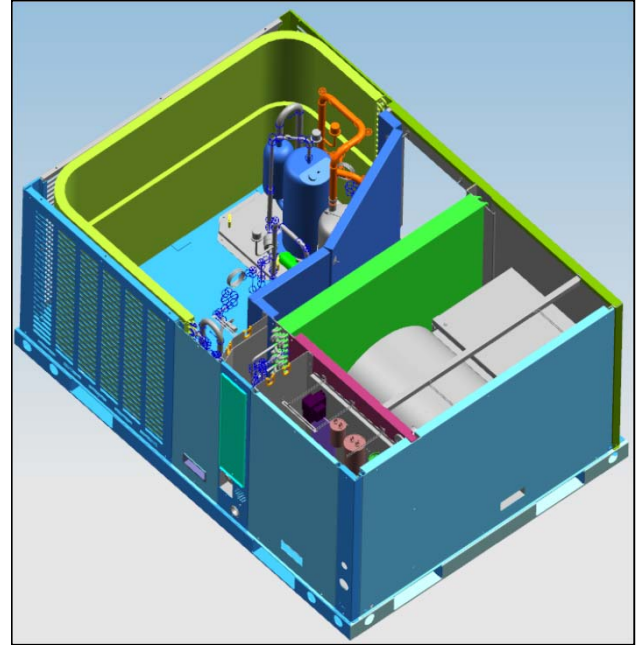
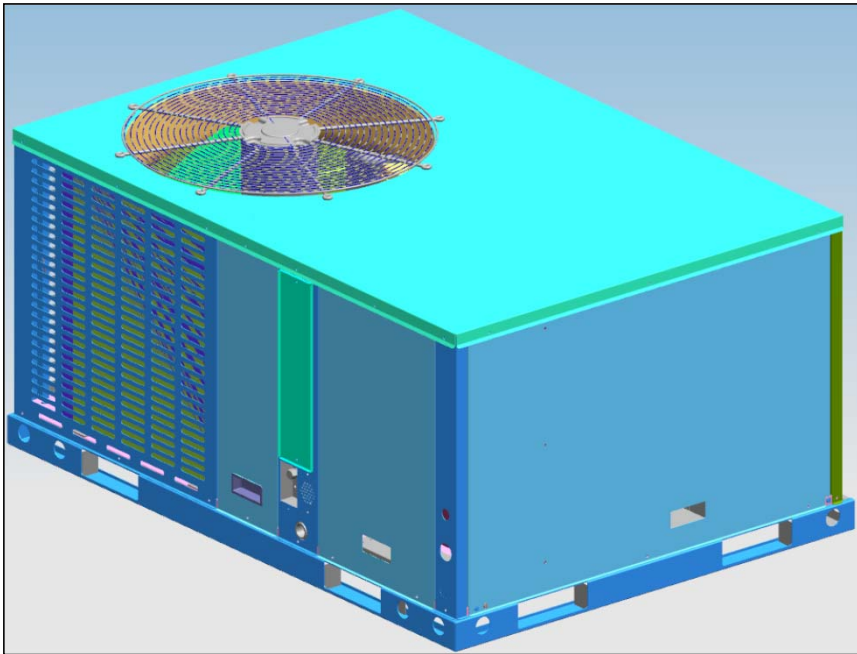
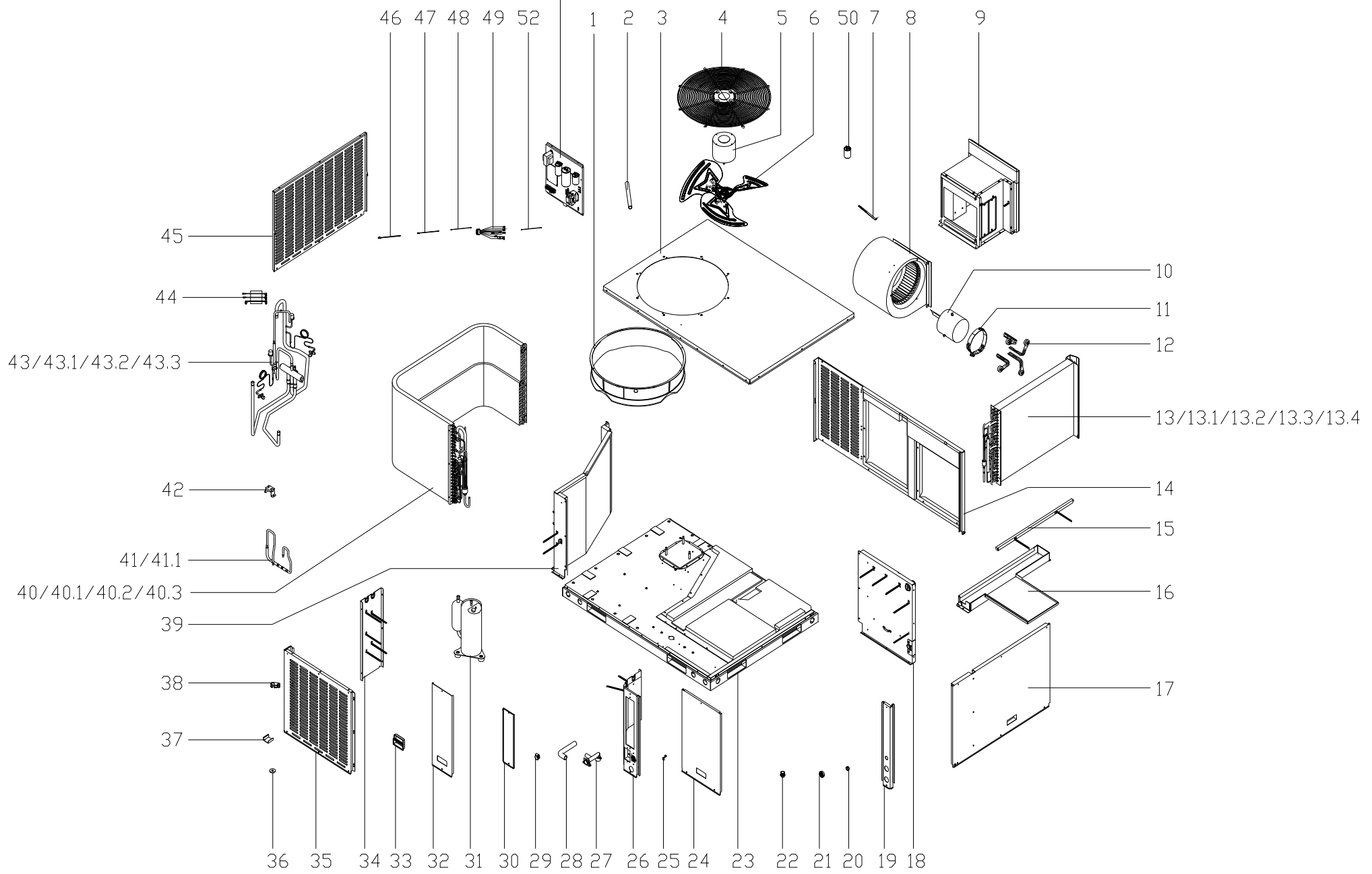


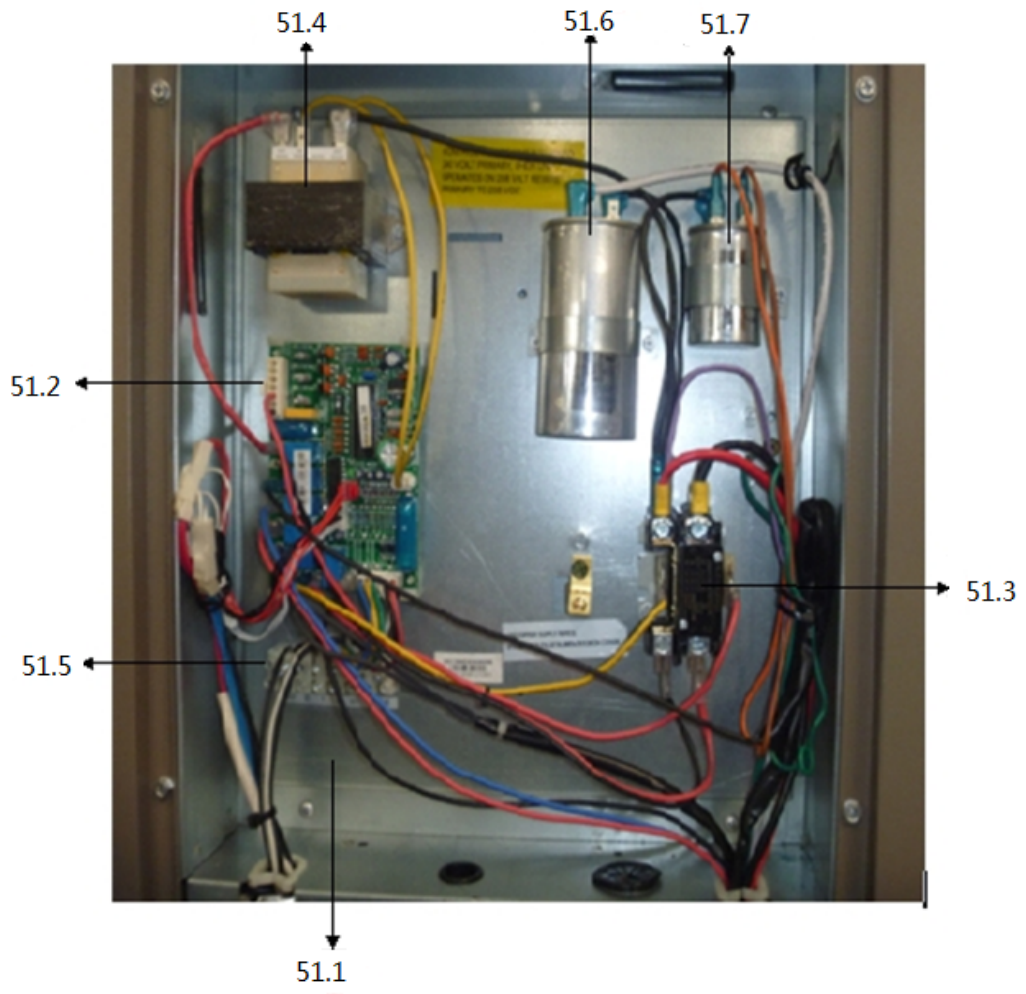
Market model: MRC-24HWN1-14T

product code: 220096001320



51/51.1/51.2
51.3/51.4/51.5
51.6/51.7





No.	中文	Part Name	Quantity	BOM code	Price(\$\$)	Remark
1	导风圈(黑色, RoHS)	Ring	1	201196090007		
2	过线导管(RoHS)	Pipe	1	201175490001		
3	顶盖组件(SB3074, RoHS)	Top conver ass'y	1	201296091025		
4	顶盖网罩(ST3023, RoHS)	Top cover veil	1	201275490044		
5	单相异步电机	Motor	1	202400401851		
6	轴流风叶(RoHS)	Axial fan	1	201200300867		
7	接水盘拉条	Drainage pan clamp	1	201270390202		
8	风轮部件(RoHS)SYZ9-9 I	Fan ass'y	1	201200300929		
9	风道组件(RoHS)	Air duct ass'y	1	201296090882		
10	异步电机(RoHS)	Motor	1	202400401444		
11	电机支架 II (RoHS)	Motor bracket II	1	201270890138		
12	电机支架组件I (RoHS)	Motor bracket I	4	201270390288		
13	蒸发器部件(RoHS)	Evaporator ass'y	1	201596090154		
13.1	蒸发器(亲水/1.5, RoHS)	Evaporator	1	201596090155		
13.2	蒸发器输入管组件(RoHS)	Input pie ass'y	1	201696091305		
13.3	蒸发器输出管组件(RoHS)	Evaporator output pipe ass'y	1	201696091306		
13.4	蒸发器连接板组件(RoHS)	Evaporator connect board ass'y	1	201296090995		
14	内侧面板组件(SB3074, RoHS)	Panel ass'y	1	201296091018		
15	横梁焊合件(RoHS)	Beam welded parts	1	201296091013		
16	接水盘组件(SB3074, RoHS)	Drainage pan ass'y	1	201296091002		
17	内侧面板组件(SB3074, RoHS)	Inside panel ass'y	1	201296091008		
18	蒸发器连接板组件(RoHS)	Connection board ass'y	1	201296091010		
19	立柱组件(SB3074, RoHS)	Pole ass'y	1	201296090977		
20	小过线圈(RoHS)	Peccadillo coacervation	1	201196190007		
21	过线胶圈(RoHS)	Rubber ring	1	201102130400		
22	封口塞(RoHS)	Sealing plug	1	201170390002		
23	底盘部件(SB3074, RoHS)	Base ass'y	1	201296091032		
24	电控盒盖板(SB3074, RoHS)	E-Part box cover	1	201296091001		
25	电线卡扣(黑色, SR-F41) (RoHS)	Wiring snaps	1	201196090005		
26	立柱组件(SB3074, RoHS)	Pole ass'y	1	201296091022		
27	出水接头(黑色, RoHS)	Water outlet joint	1	201196090002		
28	排水连接管(黑色, RoHS)	Connecting pipe ass'y	1	202796090011		
29	喉箍18-32(RoHS)	Throat bander	2	202900240000		
30	盖板(SB3074, RoHS)	Cover board	1	201296090999		
31	压缩机(GMCC) (RoHS)	Compressor	1	201400602690		
32	盖板(SB3074, RoHS)	Cover board	1	201296091000		
33	提手(S3025) (RoHS)	Handle	3	201148700003		
34	中隔板焊合件(RoHS)	Partition board parts	1	201296091006		
35	防护板(SB3074, RoHS)	Protective board	1	201296090997		
36	压缩机脚垫(RoHS)	Compressor base	3	202745100320		
37	冷凝器固定卡	Fixing clamp, condenser	4	201296090212		
38	整体自接式橡胶垫	Self joint type rubber mat	2	202700601370		
39	中隔板组件(RoHS)	Partition board ass'y	1	201296091015		
40	冷凝器部件(RoHS)	Condenser ass'y	1	201596090156		
40.1	冷凝器(亲水/1.3, RoHS)	Condenser	1	201596090157		
40.2	冷凝器输入管组件(RoHS)	Input pie ass'y	1	201696091311		
40.3	冷凝器输出管组件(RoHS)	Output pie ass'y	1	201696091315		
41	节流阀组件(RoHS)	Throttle ass'y	1	201696091326		
41.1	管道节流阀双向管道节流阀	Throttle	1	201600801569		
42	配管支撑板(RoHS)	Pipe supporting board	1	201296091028		

43	四通阀组件 (RoHS)	4-Ways valve ass'y	1	201696091327		
43.1	四通阀套件 (RoHS)	4-Ways valve	1	201600630620		
43.2	压力控制器 (RoHS)	Pressure switch	1	202301800836		
43.3	压力控制器 (RoHS)	Pressure switch	1	202301800837		
44	压缩机连接线组 (RoHS)	Compressor wire joint ass'y	1	202496090028		
45	防护板 (SB3074, RoHS)	Protective board	1	201296090998		
46	管温传感器组件 (RoHS) (中	Pipe Temp. sensor ass'y	1	202301300743		
47	室温传感器组件 (RoHS)	Room Temp. sensor ass'y	1	202301300770		
48	接地线 (绿色) (RoHS)	ground wire	1	202402190055		
49	室内风机转接线组 (RoHS)	Motor connecting wiring	1	202496090065		
50	压缩机电容 (RoHS)	Capacitor	1	202401000890		
51	屋顶机电控盒组件	E-part box ass'y	1	203396090112		
51.1	电器安装板 (RoHS)	Electric installation board	1	201296090921		
51.2	屋顶机主控板组件 (RoHS)	Main control board ass'y	1	201396490071		
51.3	交流接触器24V (RoHS)	AC contactor 24V	1	202300830518		
51.4	电源变压器 (无保险丝60Hz	Transformer	1	202300900223		
51.5	八位接线座 (RoHS)	Wire joint, 8p	1	202301400226		
51.6	压缩机电容 (RoHS)	Capacitor	1	202401000887		
51.7	压缩机电容 (RoHS)	Capacitor	1	202401000891		
52	排气温控器 (RoHS)	Discharge Temp. sensor	1	202301610027		