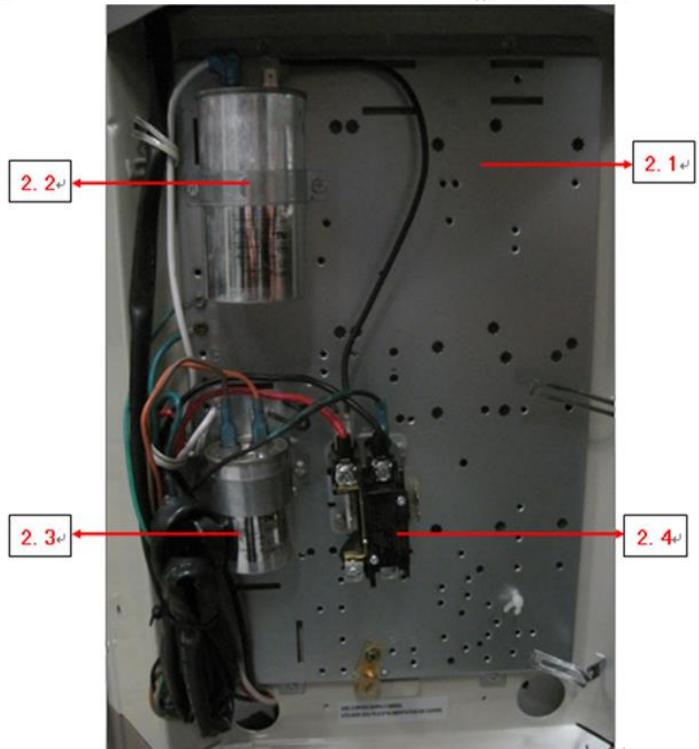
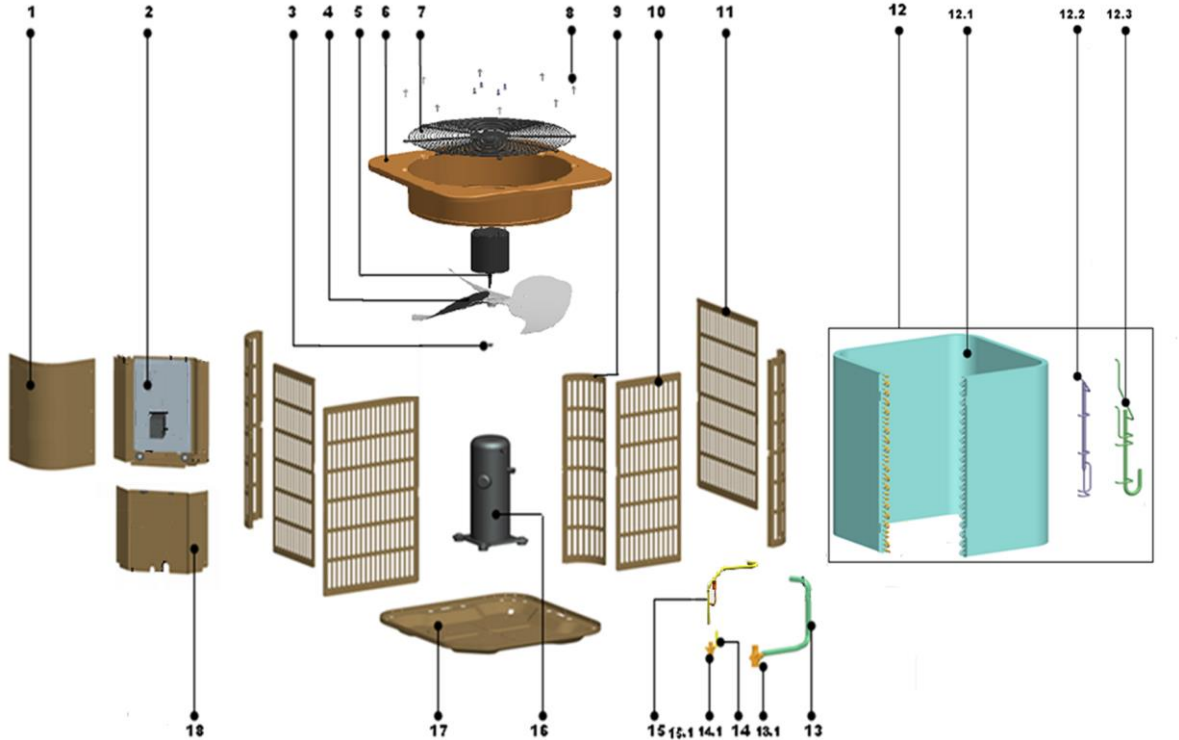


This document contains classified information.  
 All individuals are strictly forbidden from any form of disclosure in whole or in part.  
 Copy and/or distribution without expressed Midea consent is forbidden.

### 美的中央空调爆炸图 (Midea CAC Exploded view)

市场型号(Market model): MOVE-60CN1-M14L  
 产品型号(Product model): HVA-KF160W/N1-532V4E[L]  
 产品编码(Product code): 22023016000475  
 电源规格(Power supply): ZU8AndZ3UV\_1Pn,FREQUENCY\_60HZ  
 导出时间(Output time): 2017-12-15 14:46:32



序号	零部件名称	数量	物料编码	价格	代号	备注
----	-------	----	------	----	----	----

No.	Chinese Name	Part Name	Quantity	BOM Code	Price	Model	Remark
1	上侧板(SB3053) RoHS UL-KF5	Side board	1.0	12223100A00133		UL-KF53W/N1-41	
2	室外机电控盒组件 RoHS HVA-K	E-box ass'y	1.0	17223000000796		HVA-KF160W/N1-	
2.1	电控安装板组合件(SB3053) RoH	Installation board ass'y	1.0	12223000001199		EAIR-KF90W/N1-	
2.2	压缩机电容 RoHS 70uF/450V-P	Capacitor	1.0	17400103000133		70uF/450V-P2(20	
2.3	压缩机电容 RoHS 15uF/450V-P	Capacitor	1.0	17400103000151		15uF/450V-P2(20	
2.4	交流接触器 RoHS JQC-40A-10-	AC contactor 24V	1.0	11203502000032		JQC-40A-10-24V/	
3	1型六角螺母 RoHS GBT6170 M	Nut	1.0	11301512000143		GBT6170	
4	轴流风叶 RoHS ZL-600*115*12.	Fan	1.0	12200104000038		ZL-600*115*12.7-	
5	单相异步电机 RoHS YKS-230-6	Motor	1.0	11002012000741		YKS-230-6-17L	
6	顶盖部件(SB3053) RoHS HVA-K	Top cover ass'y	1.0	12223000001096		HVA-KF105W/N1-	
7	顶盖网罩(SB3023) RoHS UL-W	Top cover	1.0	12227700003729		UL-WKR71A/MN1	
8	六角头螺栓和弹簧垫圈及大垫圈	Stainless steel bolts	8.0	11301002000001		MJ16-00040	
9	支撑板(ST3053) RoHS UL-KF1	Supporting board	3.0	12223100000247		UL-KF140W/N1-5	
10	侧板组件2(SB3053) RoHS UL-K	Clapboard ass'y 2	2.0	12223000004129		UL-KF160W/N1-5	
11	侧板组件1(SB3053) RoHS HVA	UL-K Clapboard subassembly	2.0	12223100000361		UL-KF160W/N1-5	
12	冷凝器部件 RoHS HVA-KF160V	Condenser ass'y	1.0	15823000000982		HVA-KF160W/N1-	
12.1	冷凝器 RoHS HVA-KF160W/N1	Condenser	1.0	15823000000983		HVA-KF160W/N1-	
12.2	冷凝器输出管组件 RoHS HVA-K	Output pipe assembly l of conde	1.0	15123000000742		HVA-KF140W/N1-	
12.3	冷凝器输入管组件 RoHS HVA-K	Condenser input pipe assembly	1.0	15123000004421		HVA-KF140W/N1-	
13	低压阀组件 RoHS HVA-KF160V	Stop valve ass'y	1.0	15423000001316		HVA-KF160W/N1-	
13.1	方体阀 RoHS FTFM-05N1	Block valve	1.0	15500206000017		FTFM-05N1	
14	高压阀组件 RoHS UL-KF53W/N	Stop valve ass'y	1.0	15423000003178		UL-KF53W/N1-41	
14.1	方体阀 RoHS FTFM-01N1	Block valve	1.0	15500206000018		FTFM-01N1	
15	排气管组件 RoHS HVA-KF160V	Discharge pipe ass'y	1.0	15423000001317		HVA-KF160W/N1-	
15.1	压力控制器 RoHS YK-4.4/3.2-6	Pressure switch	1.0	17400516000032		YK-4.4/3.2-600(U	
16	定速涡旋式压缩机 ABG051KAA	Fixed speed scroll compressor	1.0	11102010000369		ABG051KAA	
17	底盘部件(SB3053) RoHS UL-KF	Base ass'y	1.0	12223000002430		UL-KF105W/N1-5	
18	下侧板部件(SB3053) RoHS UL-	Side board assembly, down	1.0	12223100000349		UL-KF140W/N1-5	

