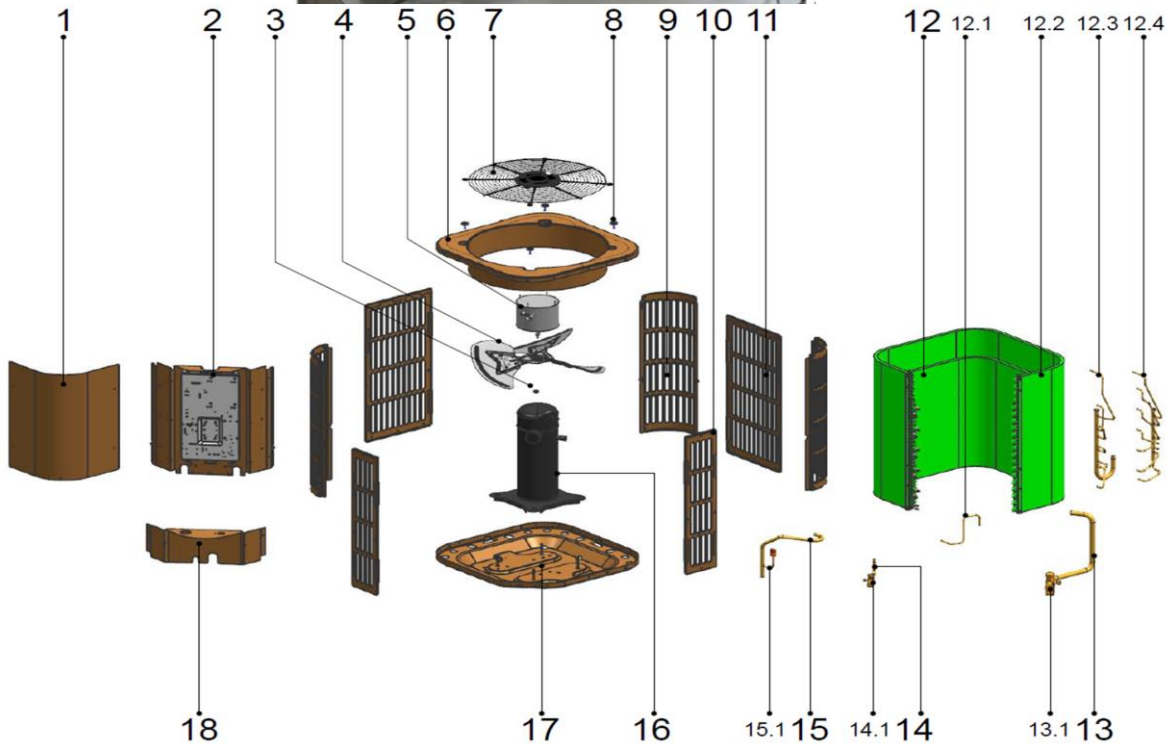
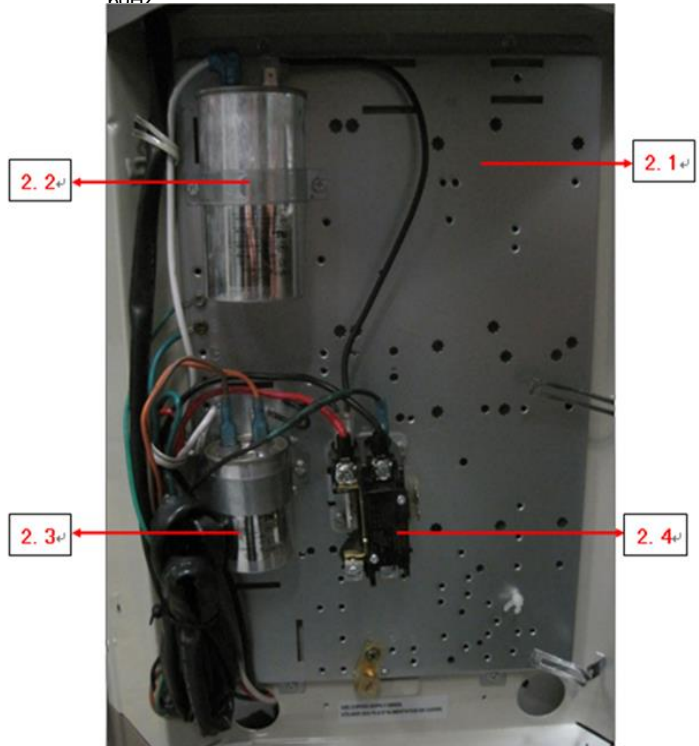


This document contains classified information.  
 All individuals are strictly forbidden from any form of disclosure in whole or in part.  
 Copy and/or distribution without expressed Midea consent is forbidden.

### 美的中央空调爆炸图 (Midea CAC Exploded view)

市场型号(Market model): MOVE-30CN1-M14C  
 产品型号(Product model): HVA-KF90W/N1-541V4E[C]  
 产品编码(Product code): 22023016000288  
 电源规格(Power supply): 2U8And230V\_1Pn,FREQUENCY\_60HZ 导出时间(Output time): 2017-12-15 14:46:28



序号	零部件名称	数量	物料编码	价格	代号	备注
----	-------	----	------	----	----	----

No.	Chinese Name	Part Name	Quantity	BOM Code	Price	Model	Remark
1	上侧板(SB3053) RoHS UL-KF53	Side board	1.0	12223100A00133		UL-KF53W/N1-41	
2	室外电控盒组件(SB3053) RoHS E-box ass'y		1.0	17223000002301		UL-KF90W/N1-54	
2.1	电控安装板组合件(SB3053) RoHS Installation board ass'y		1.0	12223000001199		EAIR-KF90W/N1-54	
2.2	压缩机电容 RoHS 40uF/450V-P Capacitor		1.0	17400103000147		40uF/450V-P2(200)	
2.3	压缩机电容 RoHS 6uF/450V-P2 Capacitor		1.0	17400103000152		6uF/450V-P2(200)	
2.4	交流接触器 RoHS JQC-40A-10- AC contactor 24V		1.0	11203502000032		JQC-40A-10-24V/10	
3	1型六角螺母 RoHS GBT6170 M Nut		1.0	11301512000143		GBT6170	
4	轴流风叶 RoHS ZL-585*110*12. Fan, 3 blade count, aluminum all		1.0	12200104000032		ZL-585*110*12.7-12	
5	单相异步电机 RoHS YKS-110-8 Motor, 208/230V 60Hz 1Ph, 1.0/1.0		1.0	11002012002120		YKS-110-8-10L	
6	顶盖部件(SB3053) RoHS HVA-1 Top cover ass'y		1.0	12223000001104		HVA-KF90W/N1-54	
7	顶盖网罩 RoHS HVA-KF90W/N Grille, top cover		1.0	12923000000028		HVA-KF90W/N1-54	
8	六角头螺栓和弹簧垫圈及大垫圈 Stainless steel bolts		8.0	11301002000001		MJ16-00040	
9	支撑板(SB3053) RoHS UL-KF53 Supporting board		3.0	12223000003961		UL-KF53W/N1-41	
10	侧板组件2(SB3053) RoHS UL-K Clapboard ass'y 2		2.0	12223000003990		UL-KF90W/N1-54	
11	侧板组件1(SB3053) RoHS HVA Clapboard ass'y 1		2.0	12223000004009		HVA-KF90W/N1-54	
12	冷凝器部件 RoHS HVA-KF90W, Condenser ass'y		1.0	15823000000261		HVA-KF90W/N1-54	
12.1	冷凝器连接管 RoHS HVA-KF10 Evaporator connection pipe ass'y		1.0	15123000000711		HVA-KF105W/N1-54	
12.2	冷凝器 RoHS HVA-KF90W/N1-5 Condenser		1.0	15823000000262		HVA-KF90W/N1-54	
12.3	冷凝器输入管组件 RoHS HVA-K Condenser input pipe assembly		1.0	15123000000713		HVA-KF90W/N1-54	
12.4	冷凝器输出管组件 RoHS HVA-K Condenser output pipe ass'y		1.0	15123000000723		HVA-KF90W/N1-54	
13	低压阀组件 RoHS UL-KF90W/N Stop valve ass'y		1.0	15423000000541		UL-KF90W/N1-54	
13.1	方体阀 RoHS FTFM-04N1 Block valve		1.0	15500206000026		FTFM-04N1	
14	高压阀组件 RoHS UL-KF53W/N Stop valve ass'y		1.0	15423000003178		UL-KF53W/N1-41	
14.1	方体阀 RoHS FTFM-01N1 Block valve		1.0	15500206000018		FTFM-01N1	
15	排气管组件 RoHS HVA-KF90W, Discharge pipe assembly		1.0	15423000000099		HVA-KF90W/N1-54	
15.1	压力控制器 RoHS YK-4.4/3.2-60 Pressure switch		1.0	17400516000032		YK-4.4/3.2-60(U)	
16	定速涡旋式压缩机 ZP25K5E-PF Fixed speed scroll compressor		1.0	11102010000270		无图号	
17	底盘部件(SB3053) RoHS UL-KF Chassis assembly		1.0	12223100000388		UL-KF120W/N1-54	
18	下侧板部件(SB3053) RoHS UL- Side board assembly, down		1.0	12223100000238		UL-KF53W/N1-41	

