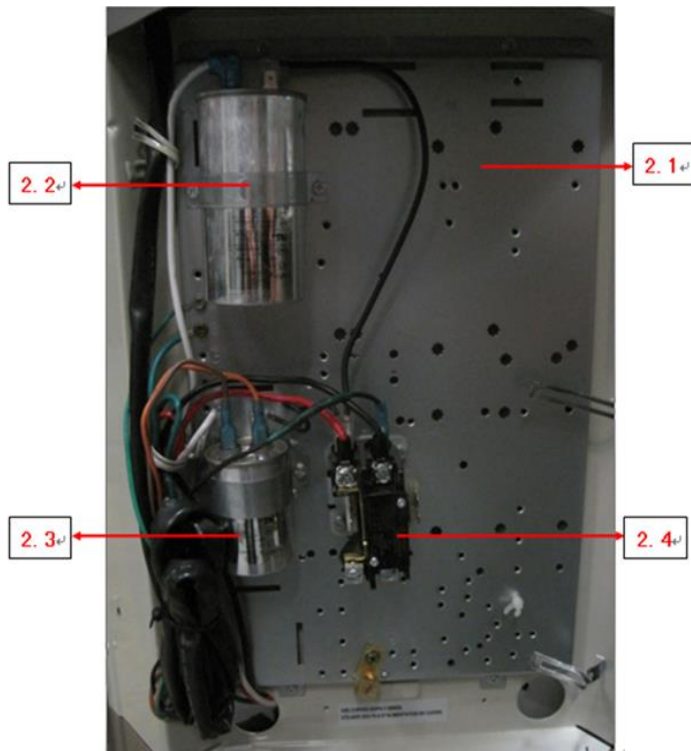
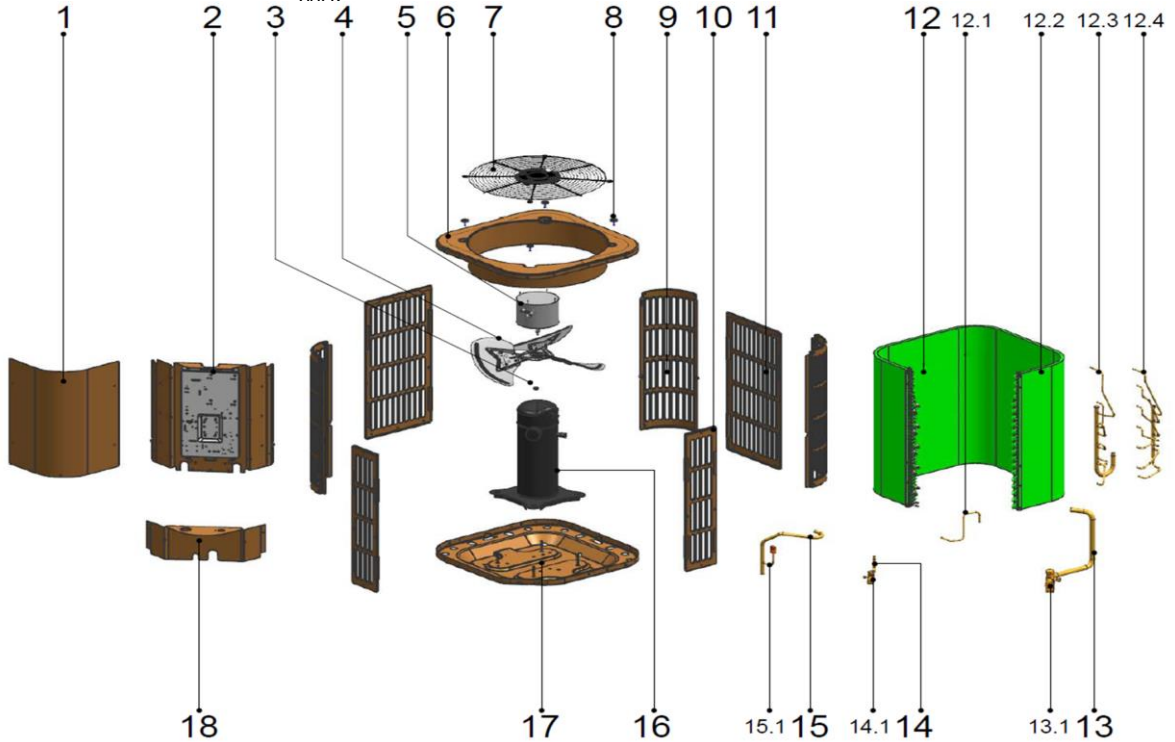


This document contains classified information.  
 All individuals are strictly forbidden from any form of disclosure in whole or in part.  
 Copy and/or distribution without expressed Midea consent is forbidden.

### 美的中央空调爆炸图 (Midea CAC Exploded view)

市场型号(Market model): MOVE-24CN1-M14C  
 产品型号(Product model): HVA-KF71W/N1-440V4E[C]  
 产品编码(Product code): 22023016000432  
 电源规格(Power supply): ZU8AndZ3UV\_1Pn,FREQUENCY\_60HZ  
 导出时间(Output time): 2017-12-15 14:46:51



序号	零部件名称	数量	物料编码	价格	代号	备注
----	-------	----	------	----	----	----

No.	Chinese Name	Part Name	Quantity	BOM Code	Price	Model	Remark
1	上侧板(SB3053) RoHS UL-KF53	Side board	1.0	12223100A00133		UL-KF53W/N1-41	
2	室外电控盒组件(SB3053) RoHS E-box ass'y		1.0	17223000002264		UL-KF53W/N1-41	
2.1	电控安装板组合件(SB3053) EAI Installation board ass'y		1.0	12223000004087		EAIR-KF53W/N1-	
2.2	压缩机电容 RoHS 35uF/450V-P Capacitor		1.0	17400103000146		35uF/450V-P2(200	
2.3	压缩机电容 RoHS 6uF/450V-P2 Capacitor		1.0	17400103000152		6uF/450V-P2(200	
2.4	交流接触器 RoHS JQC-40A-10- AC contactor 24V		1.0	11203502000032		JQC-40A-10-24V/	
3	1型六角螺母 RoHS GBT6170 M Nut		1.0	11301512000143		GBT6170	
4	轴流风叶 RoHS ZL-480*110*12. Fan,3 blade count,Aluminum all		1.0	12200104000008		ZL-480*110*12.7-	
5	单相异步电机 RoHS YKS-85-6-8L Motor		1.0	11002012000769		YKS-85-6-8L	
6	顶盖部件(SB3053) RoHS HVA-1 Top cover ass'y		1.0	12223000001102		HVA-KF71W/N1-4	
7	顶盖网罩 RoHS HVA-KF71W/N Grille		1.0	12923000000033		HVA-KF71W/N1-4	
8	六角头螺栓和弹簧垫圈及大垫圈 Stainless steel bolts		4.0	11301002000001		MJ16-00040	
9	支撑板(SB3053) RoHS UL-KF53 Supporting board		3.0	12223000003961		UL-KF53W/N1-41	
10	侧板组件2(SB3053) RoHS UL-K Clapboard ass'y 2		2.0	12223000003952		UL-KF71W/N1-44	
11	侧板组件1(SB3053) RoHS HVA- Clapboard ass'y 1		2.0	12223000004008		HVA-KF71W/N1-4	
12	冷凝器部件 RoHS HVA-KF71W, Condenser ass'y		1.0	15823000000267		HVA-KF71W/N1-4	
12.1	冷凝器连接管 RoHS HVA-KF71 Evaporator connection pipe ass'e		1.0	15123000000748		HVA-KF71W/N1-4	
12.2	冷凝器 RoHS HVA-KF71W/N1-4 Condenser		1.0	15823000000268		HVA-KF71W/N1-4	
12.3	冷凝器输入管组件 RoHS HVA-K Condenser inlet pipe ass'y		1.0	15123000000754		HVA-KF71W/N1-4	
12.4	冷凝器输出管组件 RoHS HVA-K Condenser outlet pipe ass'y		1.0	15123000000753		HVA-KF71W/N1-4	
13	低压阀组件 RoHS UL-KF71W/N Stop valve ass'y		1.0	15423000000543		UL-KF71W/N1-44	
13.1	方体阀 RoHS FTFM-04N1 Block valve		1.0	15500206000026		FTFM-04N1	
14	高压阀组件 RoHS UL-KF53W/N Stop valve ass'y		1.0	15423000003178		UL-KF53W/N1-41	
14.1	方体阀 RoHS FTFM-01N1 Block valve		1.0	15500206000018		FTFM-01N1	
15	排气管组件 RoHS HVA-KF71W, Discharge pipe assembly		1.0	15423000000101		HVA-KF71W/N1-4	
15.1	压力控制器 RoHS YK-4.4/3.2-60 Pressure switch		1.0	17400516000032		YK-4.4/3.2-60(U	
16	定速涡旋式压缩机 ZP20K5E-PF Fixed speed scroll compressor		1.0	11102010000019		ZP20K5E-PFV-13	
17	底盘部件(SB3053,沙纹灰) RoHS Chassis assembly		1.0	12223100000265		UL-KF71W/N1-44	
18	下侧板部件(SB3053) RoHS UL- Side board assembly, down		1.0	12223100000238		UL-KF53W/N1-41	

