

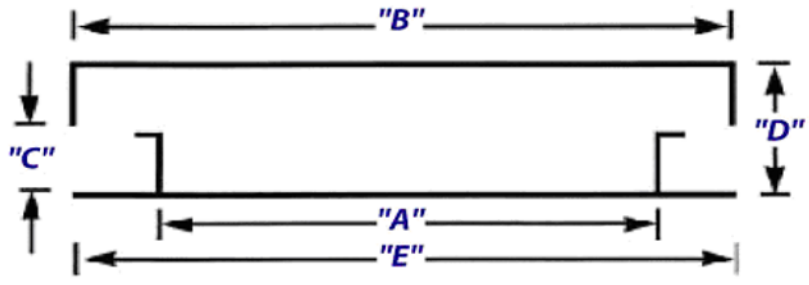
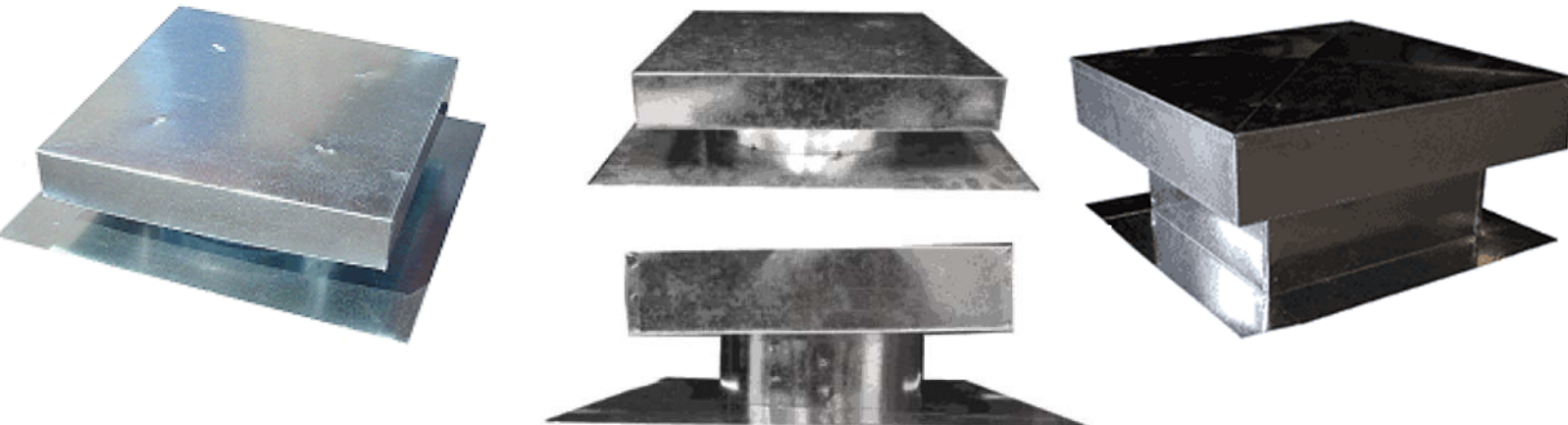
# Flat Vent Cap

[www.generalmetals.com](http://www.generalmetals.com)

General Metals Flat Vent Caps are economical stationary roof ventilators designed for general relief and intake applications. The large hood provides good weather protection with unrestricted air flow. They are used as roof mounted ventilators, combustion air relief, or intake venting on residential, commercial or industrial buildings.

**ADVANTAGES:** Offer a low profile design combined with economy and versatility

**CONSTRUCTION:** Galvanized steel, spot welded for strength & durability, caulked for assurance against leakage. #4 mesh hardware cloth meets FHA requirements for protection against bird & insect passage.



GM Item #	" A "	" B "	" C "	" D "	" E "	Free Area SQ. Inches	Approx Weight (LBS)
FVC 12	12"Round	16" x 16"	2"	4.5"	20" x 20"	78	4.67
FVC 12T	12"Round	18" x 18"	4"	8"	24" x 24"	112	6
FVC 18x18	18" SQ.	27" x 27"	4"	8"	30" x 30"	247	11.25
FVC 18x18 R	18" SQ.	27" x 27"	6"	12"	30" x 30"	247	15.50
FVC 18x18 T	18" SQ.	27" x 27"	6.5"	12"	30" x 30"	247	15.50
FVC 22 x22 T	22" SQ.	30" x 30"	8.5"	12.5"	34" x 34"	247	15.50