



# FLAT VENT CAP

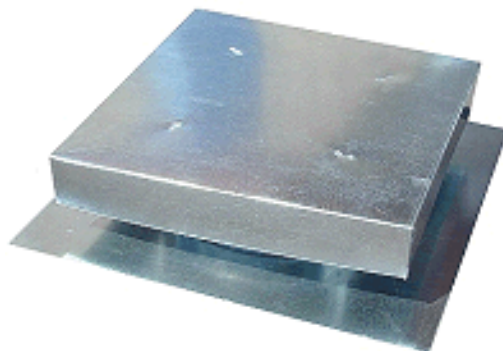
General Metals Flat Vent Caps are economical stationary roof ventilators designed for general relief and intake applications. The large hood provides good weather protection with unrestricted air flow. They are used as roof mounted ventilators, combustion air relief, or intake venting on residential, commercial or industrial buildings.

## ADVANTAGES

Offer a low profile design combined with economy and versatility

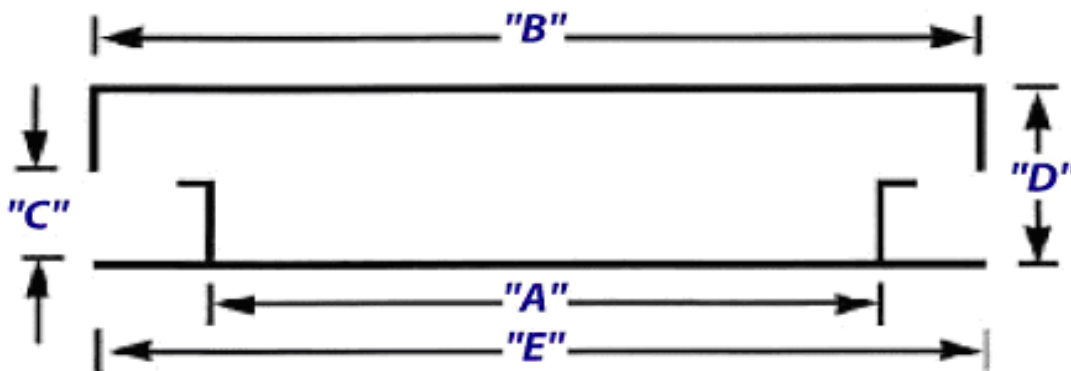
## CONSTRUCTION

Galvanized steel, sport welded for strength & durability, caulked for assurance against leakage. #4 mesh hardware cloth meets FHA requirements for protection against bird & insect passage.



Model FVC

GM ITEM #	A	B	C	D	E	FREE AREA SQ. INCHES	APPROX. WEIGHT (LBS)
FVC 18 x 18	18" SQ	27 x 27	3.5	8	30 x 30	247	11.25
FVC 18 x 18R	18" SQ	29 x 29	6	12	30 x 30	247	15.50
FVC 18 x 18T	18" SQ	25 x 25	7	12	26 x 26	247	15.50

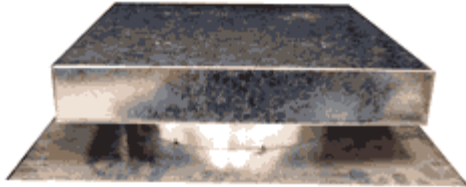


**General Metals can custom fabricate vent caps out of any material or to any size-square or rectangle!**



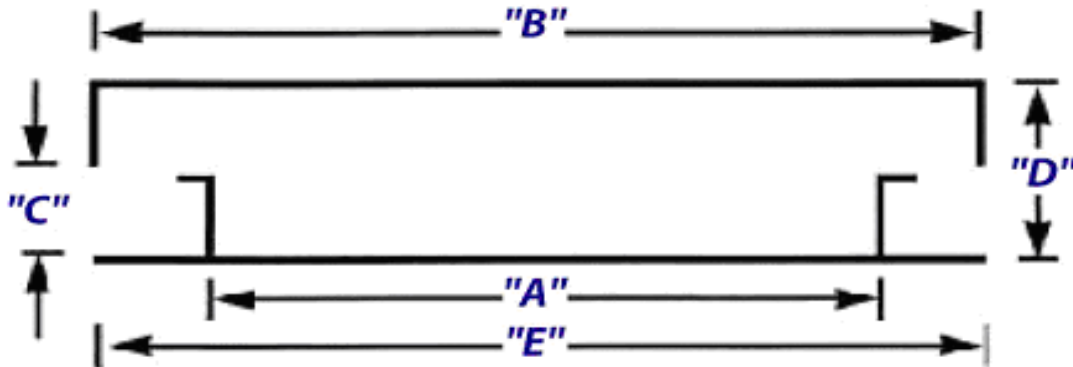
# FLAT VENT CAP

## ROUND ECONO FLAT VENT CAP



Budget priced economical 12" round flat vent cap. WH Flat roof application only. Not designed for snow applications. Modest hood design excellent for sheds, mobile home & garages. Unrestricted air flow. Provides general relief and intake. Galv steel, spot welded for strength & durability.

GM ITEM #	A	B	C	D	E	FREE AREA SQ. INCHES	APPROX. WEIGHT (LBS)
FVC 12	12" Round	16" x 16"	2"	4 ½"	20" X 20"	78	4.67
FVC 12T	12" Round	18" X 18"	3 ½"	7 ¾"	24" X 24"	112	6



## ROUND TALL FLAT VENT CAP



12" round High profile deluxe flat vent cap. WH Flat roof application only. Not suitable for Snow applications. Large hood design provides additional free area relief and intake Unrestricted air flow. Provides general relief and intake. Galv steel, spot welded for strength & durability. Caulked for assurance against leakage.

Contact our sales representative for quotes on pricing and lead times!