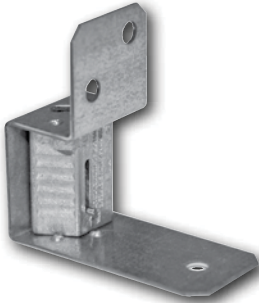


Dyna-Tite Cable Locks

KV Bracket Assembly Patent Pending

The KV bracket assembly enhances the Dyna-Tite suspension system by the addition of an integral bracket, which fastens the cable lock to rectangular ductwork with sheet metal screws. Once the KV assembly bracket is attached to the duct, the wire rope "drop" is passed into the entry hole at the top of the bracket, through the cable lock, and out the exit hole at the bottom. The locking teeth inside the cable lock engage the wire rope and secure the ductwork in place. An accessible release pin allows for simple adjustments.



Working Load Limit

150 lbs. with 3/32 in. wire rope

Item #	Code	Description	Quantity
30361	KV12	Bracket Assembly with CL12 for use with 3/32 in. wire rope	100 per carton

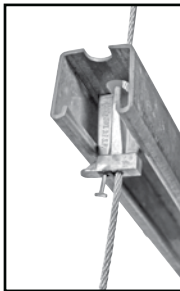
For use with 3/32 in. wire rope ONLY.

Zip-Clip

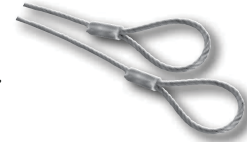
The Zip-Clip fits securely into strut and has a spring loaded pawl which allows the entry and passage of wire rope through the cable lock. Once engaged by the pawl, the wire rope is gripped with increasing pressure as the suspended load is increased. To ease adjustment, each Zip-Clip cable lock has an integrated release to disengage the gripping pawl.



"T" shaped release



- A work load limit of 220 lbs. (100 kg)
- Sold in sets with looped cable
To ensure system integrity, Zip-Clips should only be used with wire rope supplied in the set.
- Built in 5:1 safety factor
- Fits inside strut



Item #	Code	Description	Quantity
30041	ZCWR5	Zip-Clip Cable Lock and Wire Rope with Loops - 5 ft.	10 bags of 10 sets
30042	ZCWR10	Zip-Clip Cable Lock and Wire Rope with Loops - 10 ft.	10 bags of 10 sets
30043	ZCWR15	Zip-Clip Cable Lock and Wire Rope with Loops - 15 ft.	10 bags of 10 sets
30044	ZCWR25	Zip-Clip Cable Lock and Wire Rope with Loops - 25 ft.	10 bags of 5 sets

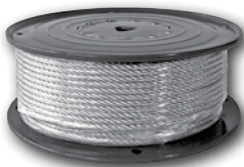
Wire Rope supplied in set is for use with the Zip-Clip Cable lock ONLY.

* Zip-Clips are also available as a kit, see pages 11 & 12.

Dyna-Tite Cable & End Fixings

Cable Lock Wire Rope

Aviation grade galvanized wire rope supplied by Duro Dyne is manufactured to exacting standards and statistically tested to verify stated breaking strengths. Duro Dyne 3/32 in. and 1/8 in. wire ropes utilize standard 7x7 construction. 3/16 in. wire rope has 7x19 construction. Duro Dyne recommends only using wire rope supplied by Duro Dyne to ensure maximum safety and integrity of the installation.



Item #	Code	Description	Tolerance	Construction	Packaging
30202	WC3	3/32 in. Wire Rope	+ .012/- .006 in.	7x7	500 ft./roll
30204	WC4	1/8 in. Wire Rope	+ .014/- .007 in.	7x7	500 ft./roll
30206	WC6	3/16 in. Wire Rope	+ .018/- .009 in.	7x19	250 ft./roll