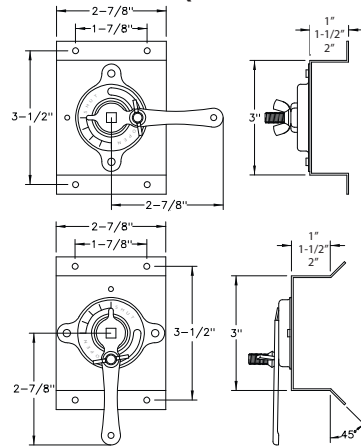
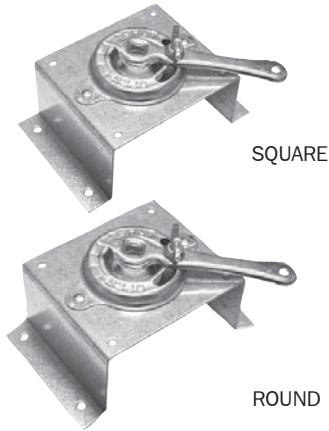


# STANDOFF REGULATORS

(CONTINUED)

## STANDOFF WITH 1/4" DIAL REGULATOR (FOR DAMPERS UP TO 10")



### K2 SERIES FOR SQUARE DUCT

ITEM#	MODEL	SHAFT SIZE	STAND HEIGHT
7364	K2-1	1/4" sq.	1"
7365	K2-150	1/4" sq.	1-1/2"
7366	K2-2	1/4" sq.	2"

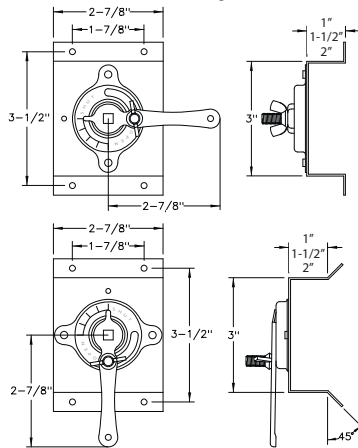
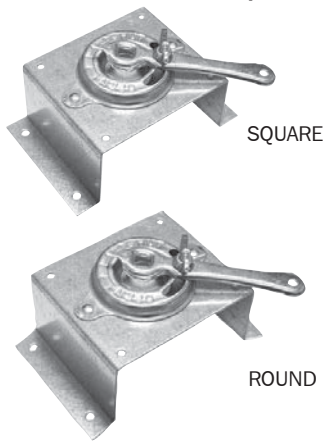
Packed 10 Per Carton.

### K2 SERIES FOR ROUND DUCT

ITEM#	MODEL	SHAFT SIZE	STAND HEIGHT
7362	K2R-1	1/4" sq.	1"
8197	K2R-150	1/4" sq.	1-1/2"
7363	K2R-2	1/4" sq.	2"

Packed 10 Per Carton.

## STANDOFF WITH 3/8" DIAL REGULATOR (FOR DAMPERS UP TO 20")



**KR Series available in stainless steel. See page 18.**

### KR SERIES FOR SQUARE DUCT

ITEM#	MODEL	SHAFT SIZE	STAND HEIGHT
8304	KR3-1	3/8" sq.	1"
8310	KR3-150	3/8" sq.	1-1/2"
7360	KR3-2	3/8" sq.	2"

Packed 10 Per Carton.

### KR SERIES FOR ROUND DUCT

ITEM#	MODEL	SHAFT SIZE	STAND HEIGHT
7361	KR3R-1	3/8" sq.	1"
8366	KR3R-150	3/8" sq.	1-1/2"
7359	KR3R-2	3/8" sq.	2"

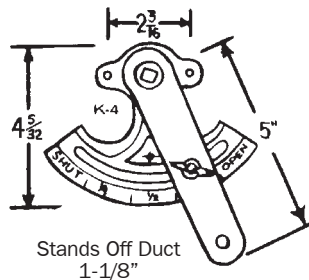
Packed 10 Per Carton.

# QUADLINE DAMPER QUADRANTS

SETS AND PARTS

These heavy gauge plated steel quadrants are designed with excellent handle action as well as quick wing nut adjustment and locking of the damper. The frame is marked to show the exact position of the damper. For use on square or round ducts.

## 3/8" QUADRANT SETS (FOR DAMPERS UP TO 20")



### 3/8" QUADRANT SETS

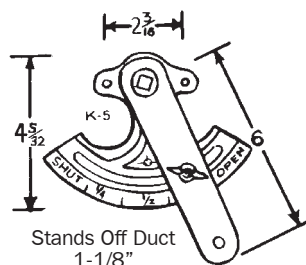
ITEM#	MODEL	SET CONSISTS OF:
8050	KS38	K-4 quadrant; KP-9R round end bearing; KP-9S square end bearing
8051	KS385	K-4 quadrant; KP-7 spring loc bearing; KP-9S long square end bearing
8049	KS385L	K-4 quadrant; KP-7L long spring loc bearing; KP-9L long square end bearing

Packed 1 Set Per Carton

8059 K4 3/8" quadrant only

Packed 100 per Carton

## 1/2" QUADRANT SETS (FOR DAMPERS UP TO 30")



### 1/2" QUADRANT SETS

ITEM#	MODEL	SET CONSISTS OF:
8052	KS12	K-5 quadrant; KP-10R round end bearing; KP-10S square end bearing

Packed 1 Set Per Carton

8060 K5 1/2" quadrant only

Packed 100 per Carton