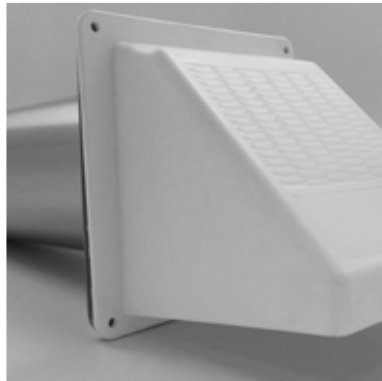
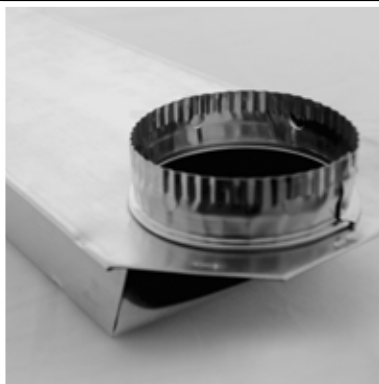


Catalog 2016



201 Broiles Drive
Jacksonville, TX 75766
Tel: 888-368-7233
Fax: 800-259-8368
buildersbest.com

Proper dryer venting can be a very inexpensive way to increase the energy efficiency of a home, a trend that isn't going away. Also, helping consumers increase the longevity of their appliances and making their investments last longer is always important, but especially in today's economy.

Let's VENT

We want your venting to work right the first time.

Builder's Best *enables* professional installers and homeowners to solve residential venting needs quickly and confidently. Our products are *expertly engineered* for specific applications, to ensure proper airflow between appliances and the exterior of a home. We'll give you the specifications you need to make an intelligent choice. Then the safety and performance of the home will be enhanced, the first time.

We created a dryer venting system, *often imitated but never equaled*. We've extended the patented fittings and designs to flexible pipe, hoods, wall caps and soffit vents and these are often smarter choices than our competition. That's because we care about the product's end use and we want it to work correctly, the first time.

We evolved from very small manufacturing facilities in Michigan, to much larger manufacturing and distribution

facilities in Jacksonville, Texas, and Jacksonville, Florida. We ship truckloads daily to national distribution warehouses, but pride ourselves on being drop-ship experts for medium to small distributors. Our products are found coast to coast in retail stores, wholesalers, distributors, installer groups, contractors and appliance manufacturers under several brand names, including our own. If you look behind your clothes dryer, it is very likely you will find Builder's Best venting!

We believe in our product and have grown our sales by consistently providing the most *reliable solutions*. *Strategic acquisitions and continual investment* in all levels of manufacturing and packaging position us as a leader in the industry. Ultimately, our customer's *trust* in the Builder's Best team, from Sales Managers to Order Entry to Production Management to Quality Control to Shipping, is what moves us forward.



Builder's Best, Inc.
201 Broiles Drive
Jacksonville, TX 75766
Tel: 903-586-8283
Fax: 888-368-7233
buildersbest.com

Photo by Mark Krizmanic

FLEX PIPE



- V750 Flexible Pipe 4
- V350-U Flexible Pipe 4
- V250 Flexible Pipe 4



- The Original Aluminum Air Duct*
- Un-Insulated
- A100 Air Duct 5
 - A100 Stretch-Fit™ Air Duct 5
- Insulated:
- A300 Silver 8
 - A400 Black 8

PRO & Standard

- V730 Double Female 5
- V330 Crimped One End 6
- V331 Double Crimp 6
- V230 Plain Ends 6
- V320 Crimped One End 7
- V321 Double Crimp 7
- V220 Plain Ends 7

RIGID PIPE & ELBOWS

- Galvanized Pipe & Elbow 9
- V030 Rigid Aluminum Pipe 9
- Long Sweep Elbow 9
- V020 Rigid Aluminum Pipe 9
- V010 Rigid Aluminum Pipe 9
- 90° Standard Adjustable Elbow 9

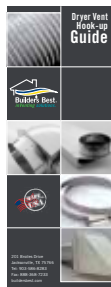
Part #	Pg	
010016	24	PART NUMBER
010150	24	CROSS REFERENCE
010151	26	PAGE 35
010152	26	
010153	28	
010155	26	
010158	28	
010179	18	

HOSE

- Foil Duct 10
- UL® Vent Kits 10
- SilverDuct™ 11
- Indoor Lint Traps 11
- PRO Vinyl Hose 12
- Standard Vinyl Hose 12
- Vinyl Bath Vent Kits 12
- ClearDuct 12
- Clamps 13

HOODS

- Aluminum Large Diameter 14
- Galvanized Large Diameter 14
- Rectangular 15
- 3-4" Galvanized 16
- 3-4" Aluminum 17
- Side Wall Caps 17
- 3-4" Plastic Wide Mouth 18
- Bird Guard 18
- J Block Vent 18
- Louvered Plastic 19
- Mini Louver Fresh Air Intake 20
- Micro Louver Eave Vent 20
- Plastic Eave Vent Exhaust 21
- Diffusers 21
- Air Intakes/Exhaust 21
- Galvanized Roof Caps 30
- Aluminum Roof Caps 30
- Umbrella Cap 30
- Creative Crown 30
- Broad Band Siphon Vent 31
- Plastic Roof Caps 31



HOOK-UP GUIDE
PN 902 EXCERPT
ON PAGE 32 IS
ALSO AVAILABLE FOR
POINT OF PURCHASE
AND INSTALLATION
PROGRAMS

DRYER VENTING

Accessories

- Pest Guard 22
- Draft Stopper 22
- Diverter 22
- Inreaser/Reducers 22
- Couplings 22



Pipe

- V830 Builder's Best® Pipe 23
- V530 E-Z-Fasten™ Pipe 23
- V430 Readi-Pipe™ 23
- Extension collar 23
- UL® Listed Pipe 25

Elbows

- Close Elbow® 24
- Wall Offset Elbow® 24
- Dryer Offset Elbow® 24
- Foil Tape 24

All Metal Kits

- UL® Dryer Vent Kits 25
- Over-the-Top® Kit 26
- Installer's Kit™ 26
- Metal Kits with Hoods 26

Periscopes

- Zero Periscope™ 27
- 18-29" Periscope 27
- 29-50" Periscope 27
- Extension Pieces 27
- Galvanized 29-74" Periscope 28
- Aluminum 29-74" Periscope 28
- Dryer Eave Vent 28
- Transitions 28
- Dryer Outlet Box 29



V750 AIR DUCT

- Universal male/female collar on each end
- 8' pieces compressed to 32"
- Factory installed universal male/female collars ensure uniform, air tight connections.
- UL® 181 label



Diameter	Length	Part #	Qty	Package
5"	8'	110344	9	bulk
6"	8'	110345	4	bulk
	8'	010346	9	bulk
7"	8'	110347	4	bulk
8"	8'	110348	4	bulk
	8'	010349	9	bulk
9"	8'	110350	4	bulk
10"	8'	110351	4	bulk
12"	8'	010352	1	ind. box
14"	8'	010353	1	ind. box
16"	8'	010354	1	ind. box
18"	8'	010355	1	ind. box
20"	8'	010356	1	ind. box
22"	8'	010357	1	ind. box
24"	8'	010358	1	ind. box

V350-U AIR DUCT

- 8' length
- One end crimped, one end plain
- Un-compressed
- UL® 181 label



Diameter	Length	Part #	Qty	Package
3"	8'	110744	42	bulk
4"	8'	110745	25	bulk
5"	8'	110759	16	bulk
6"	8'	110760	12	bulk
7"	8'	110761	9	bulk
8"	8'	110762	6	bulk
9"	8'	110763	5	bulk
10"	8'	110764	4	bulk
12"	8'	110755	2	ind. box

V250 AIR DUCT

- 8' and 10' lengths
- Plain Ends
- Compressed
- UL® 181 label



Diameter	Length	Part #	Qty	Package
3"	8'	110803	56	bulk
	10'	110801	40	bulk
4"	8'	110804	30	bulk
	10'	110802	24	bulk
5"	8'	110805	15	bulk
	10'	110690	15	bulk
6"	8'	110806	12	bulk
	10'	110691	12	bulk
7"	8'	110807	8	bulk
	10'	110692	6	bulk
8"	8'	110808	6	bulk
	10'	110693	6	bulk
9"	8'	110809	5	bulk
10"	8'	110810	4	bulk

Builder's Best purchased Metalflex® of Atlanta Georgia in 2005.
This is the strongest duct we make.



MODEL A 100 AIR DUCT

- Uncompressed full 8' lengths
- Uninsulated
- Factory crimp on one end
- UL® 181 label.



Diameter	BB Part #	Qty	Package
3"	111253	42	bulk
4"	111254	25	bulk
5"	111255	16	bulk
6"	111256	12	bulk
7"	111257	9	bulk
8"	111258	6	bulk
9"	111259	5	bulk
10"	111260	4	bulk
12"	111261	4	bulk
14"	111262	4	bulk
16"	011263	1	ind. box
18"	011264	1	ind. box
20"	011265	1	ind. box
24"	011266	1	ind. box

MODEL A 100 STRETCH-FIT™ AIR DUCT

- 8' lengths compressed to 29"
- Uninsulated
- Factory crimp on one end
- UL® 181 label.



Diameter	BB Part #	Qty	Package
3"	111356	12	bulk
4"	111357	8	bulk
5"	111358	5	bulk
6"	111270	8	bulk
7"	111271	6	bulk
8"	111272	4	bulk
9"	111273	4	bulk
10"	111274	3	bulk

THERMOFIN MODEL NON-UL® STRETCH-FIT™ HAS BEEN REPLACED BY PRO V330 P. 6

V730 "DOUBLE FEMALE"



- 8' length
- Aluminum female collars overlap for smooth taped seams.



Diameter	Length	BB Part #	Qty	Package
3"	8'	011454	20	bulk
4"	8'	011456	12	bulk
With two steel screw clamps:				
3"	8'	011501	20	bulk
4"	8'	011502	12	bulk



Builder's Best purchased Thermofin of Florida in 2007. This original, durable high pressure UL® listed duct has been built the same way for over 35 years. It is easily formed by hand into curves and small radius elbows.

V330

- One crimped end and one plain end
- Non-insulated general purpose venting duct for low and medium operating pressures.
- Non-combustible corrugated aluminum with water-tight continuous lockseams.
- Class 0 metal duct.



Diameter	Length	Part #	Qty	Package
3"	8'	011489	20	bulk
4"	8'	011491	12	bulk
5"	8'	011493	6	bulk
6"	8'	110317	4	bulk
7"	8'	110319	4	bulk
8"	8'	110320	4	bulk
9"	8'	110322	4	bulk
10"	8'	110323	4	bulk
12"	8'	110246	4	bulk

V331

- Same as V330, but with a Double Crimp

Diameter	Length	Part #	Qty	Package
3"	8'	011450	20	bulk
4"	8'	011452	12	bulk

V230

- Same as V330, but with Plain ends



Diameter	Length	Part #	Qty	Package
3"	8'	110250	20	bulk
	10'	110251	20	bulk
	20'	110401	25	bulk
	25'	110252	25	bulk
4"	8'	110087	12	bulk
	10'	110253	12	bulk
	20'	110402	16	bulk
5"	25'	110315	16	bulk
	8'	011476	6	bulk
	10'	110256	9	bulk
6"	20'	110257	9	bulk
	8'	011479	4	bulk
	10'	110259	12	bulk
7"	20'	110260	6	bulk
	8'	011482	4	bulk
	10'	110262	8	bulk
8"	20'	110263	4	bulk
	8'	110264	4	bulk
	10'	011487	6	bulk
9"	20'	110266	4	bulk
	8'	110267	4	bulk
	10'	110268	4	bulk
10"	20'	110269	4	bulk
	8'	110383	4	bulk
	10'	110384	4	bulk
12"	20'	110385	4	bulk
	8'	110247	4	bulk
	8'	110248	2	bulk

With two steel screw clamps:

4"	8'	110460	12	Display Bag
----	----	--------	----	-------------

The Builder's Best® PRO versions are heavier and stronger.



V320

- One crimped end and one plain end
- Non-insulated general purpose venting duct for low and medium operating pressures.
- Non-combustible corrugated aluminum with water-tight continuous lockseams.
- Class O metal duct.



Diameter	Length	Part #	Qty	Package	UPC
3"	8'	110443	10	Display Bag	•
	8'	011458	20	bulk	
	20'	110439	16	bulk	
4"	8'	110444	12	Display Bag	•
	8'	110434	12	bulk	
	20'	110439	16	bulk	
5"	8'	110445	6	Display Bag	•
	8'	110435	6	bulk	
6"	8'	111463	4	Display Bag	•
	8'	010431	4	bulk	
7"	8'	111465	4	Display Bag	•
	8'	011466	4	bulk	
8"	8'	111468	4	Display Bag	•
	8'	011469	4	bulk	

V321

- Same as V320, but with a Double Crimp on one end.

Diameter	Length	Part #	Qty	Package
3"	8'	011471	20	bulk
4"	8'	110584	12	bulk
5"	8'	110585	6	bulk
6"	8'	011473	4	bulk
7"	8'	011474	4	bulk
8"	8'	011475	4	bulk

V220

- Same as V320 but with Plain Ends



Diameter	Length	Part #	Qty	Package	UPC
3"	8'	110453	10	Display Bag	•
	8'	111583	10	Display Tag	•
	8'	011436	20	bulk	
4"	10'	110413	20	bulk	
	20'	110420	25	bulk	
	25'	110421	25	bulk	
	5'	110400	15	bulk	
	8'	110454	12	Display Bag	•
5"	8'	111584	12	Display Tag	•
	8'	110404	12	bulk	
	10'	110414	12	bulk	
	20'	110429	16	bulk	
	25'	110419	16	bulk	
	8'	111585	6	Display Tag	•
	8'	110405	6	bulk	
6"	10'	011440	9	bulk	
	20'	110425	9	bulk	
	8'	111586	4	Display Tag	•
	8'	011441	4	bulk	
7"	10'	110416	12	bulk	
	20'	011443	6	bulk	
	8'	111587	4	Display Tag	•
8"	8'	011444	4	bulk	
	10'	110417	8	bulk	
	8'	111588	4	Display Tag	•
	8'	011447	4	bulk	
10'	110418	6	bulk		
	10'	110418	6	bulk	
With two steel screw clamps:					
4"	8'	110459	12	Display Bag	•

MODEL A 300 SILVER

- Uncompressed
- 8' lengths
- Factory crimp on one end
- Insulated - R4, R6, R8
- Outer jacket is silver "metalized" with scrim mylar vapor barrier.
- UL® 181 label



R4

Diameter	BB Part #	Qty	Package
4"	111307	12	bulk
5"	111308	9	bulk
6"	111309	8	bulk
7"	111310	5	bulk
8"	111311	4	bulk
9"	111312	4	bulk
10"	111313	4	bulk
12"	111314	4	bulk
14"	111315	3	bulk
16"	011316	1	ind. box
18"	011317	1	ind. box
20"	011318	1	ind. box
24"	011319	1	ind. box

R6

Diameter	BB Part #	Qty	Package
3"	111320	16	bulk
4"	111321	12	bulk
5"	111322	9	bulk
6"	111323	6	bulk
7"	111324	4	bulk
8"	111325	4	bulk
9"	111326	4	bulk
10"	111327	4	bulk
12"	111328	3	bulk
14"	111329	2	bulk
16"	011330	1	ind. box
18"	011331	1	ind. box
20"	011332	1	ind. box
24"	011333	1	ind. box

R8

Diameter	BB Part #	Qty	Package
3"	111661	16	bulk
4"	111662	12	bulk
5"	111663	9	bulk
6"	111664	6	bulk
7"	111665	4	bulk
8"	111666	4	bulk
9"	111667	4	bulk
10"	111668	4	bulk
12"	111669	3	bulk
14"	111670	2	bulk
16"	011671	1	ind. box
18"	011672	1	ind. box
20"	011673	1	ind. box
24"	011674	1	ind. box

The Builder's Best® Thermofin® Model A has a core of A100 flexible aluminum duct wrapped in fiberglass insulation.



GALVANIZED PIPE



30 gauge galvanized



Diameter	Length	Part #	Qty	Package
3"	2'	110185	25	bulk
4"	2'	110182	25	bulk
4"	5'	111002	15	bulk

V030 RIGID ALUMINUM PIPE



26 gauge aluminum
(V030 is heavier than V020)



Diameter	Length	Part #	Qty	Package	UPC
3"	2'	110640	25	bulk	•
	5'	110641	15	bulk	
4"	2'	110642	25	bulk	•
	5'	110643	15	bulk	

V020 RIGID ALUMINUM PIPE

Lighter weight than PRO V030



Diameter	Length	Part #	Qty	Package	UPC
3"	2'	110636	25	bulk	•
	5'	110637	15	bulk	
4"	2'	110638	25	bulk	•
	5'	110639	12	bulk	•

V010 RIGID ALUMINUM PIPE

Lightest weight Rigid Pipe

Diameter	Length	Part #	Qty	Package
3"	2'	110644	25	bulk
4"	2'	110645	25	bulk

GALVANIZED ELBOW



30 gauge galvanized

- Turns 90° within 6" in 4-piece section
- One crimped end



Diameter	Part #	Qty	Package
3"	110184	12	bulk
	010186	900	skid (75 cases)
4"	110181	12	bulk
	010187	660	skid (55 cases)

ALUMINUM ELBOW

26 Gauge

- Turns 90° within 6"
- One crimped end
- 4-piece sectional adjustability



Diameter	Part #	Qty	Package	UPC
3"	110543	12	bulk	•
4"	110544	12	bulk	•

LONG SWEEP ELBOW

- Measures the same as straight pipe
- Overcomes length of run issues for some building codes.
- 4-piece sectional adjustability



Diameter	Material	Part #	Qty	Package
4"	aluminum	111646	12	bulk



The Builder's Best® PRO versions are heavier and stronger.

Foil Duct

UL® 181, Class 1 air connector label

- Multi-ply design of metalized polyester and aluminum/polyester laminate
- Steel wire support
- 3" dia. has ¾" pitch
- 4–12" dia. has 1" pitch
- UL® sticker every 10 feet
- Maximum velocity rating 5000 fpm



Diameter	Length	Part #	Qty	Package	UPC
3"	8'	110218	12	bulk	
	25'	110201	4	bulk	
	25'	110825	16	bag	
	25'	110221	5	ind. box	•
	50'	110215	4	ind. box	•
4"	5'	110219	12	bulk	
	5'	110223	12	Display Box	•
	8'	110224	12	Display Box	•
	8'	110220	12	bulk	
	8'	010242	36	bulk	
	25'	110202	4	bulk	
	25'	110826	16	Bag	
	25'	110222	5	ind. box	•
	50'	110216	4	ind. box	•
	50'	110244	4	Display Box	•
5"	25'	010203	1	ind. box	•
6"	25'	010204	1	ind. box	•
7"	25'	010205	1	ind. box	•
8"	25'	010206	1	ind. box	•
9"	25'	010207	1	ind. box	•
10"	25'	010208	1	ind. box	•
12"	25'	010210	1	ind. box	•
With two spring clamps:					
4"	8'	110680	12	Bag	•
With two steel screw clamps:					
4"	5'	110660	12	Display Bag	•
	8'	110661	12	Display Bag	•

Foil Duct BATH VENT KITS

Hose	Hood	Clamps	Part #	Qty	Package	UPC
4" x 5' Foil Duct	White wide mouth plastic	2 ZipTorq™	110620	4	ind. box	•
4" x 8' Foil Duct	White wide mouth plastic	2 ZipTorq™	110618	4	ind. box	•
4" x 8' Foil Duct	Standard aluminum	2 ZipTorq™	110533	4	ind. box	•
4" x 5' Foil Duct	Standard aluminum	2 ZipTorq™	110603	4	ind. box	•
4" x 5' Foil Duct	Brown louver plastic	2 ZipTorq™	110611	4	ind. box	•
4" x 5' Foil Duct	White louver plastic	2 ZipTorq™	110612	4	ind. box	•
4" x 8' Foil Duct	Brown louver plastic	2 ZipTorq™	110609	4	ind. box	•
4" x 8' Foil Duct	White louver plastic	2 ZipTorq™	110610	4	ind. box	•
4" x 8' Foil Duct	White louver hood/Inceaser/Reducer	2 ZipTorq™	111520	6	Display Box	•
Hose	Hood	Clamps	Part #	Qty	Package	UPC
4" x 8' Foil Duct	4-5" Plastic Roof Cap/Inceaser/Reducer	2 ZipTorq™	011885	1	ind. box	•
4" x 8' Foil Duct	4" Black Metal Roof Cap/InceaserReduce	2 ZipTorq™	012640	1	ind. box	•



Part #110533



Part #111520



Part #011885

The Builder's Best® PRO versions are heavier and stronger.



SILVERDUCT™

- UL® listed and labeled as foil dryer transition duct.
- Steel wire support, multi-ply design of aluminum and polyester



Diameter	Length	Part #	Qty	Package	UPC
4"	5'	110504	12	bulk	
	5'	010507	72	bulk	
	5'	110676	6	Display Box	•
	8'	110505	12	bulk	
	8'	010508	54	bulk	
	8'	110677	6	Display Box	•
	8'	010793	20	Display Box	•
With two spring tension clamps:					
4"	5'	110670	12	bag	•
	8'	110671	12	bag	•
With two Zip Torq™ clamps:					
4"	5'	110672	12	Display Box	•
	8'	110673	12	Display Box	•

LONG LENGTH SILVERDUCT™

This product is constructed to meet UL™ 2158A transition duct for clothes dryers.

There is no UL® label. UL® specifies clothes dryer transition duct venting can only be 8 foot in length.

Diameter	Length	Part #	Qty	Package	UPC
4"	20'	111506	6	Display Box	•
	25'	111504	5	ind. box	•
	50'	111505	4	ind. box	•

SILVERDUCT™ DRYER VENT KITS

- 5' and 8' Hose is UL® listed and labeled as clothes dryer transition duct.
- Some hoods require assembly
- Louvered hoods and Wide Mouth Plastic hoods have 10" tails

Hose	Hood	Clamps	Part #	Qty	Package	UPC
4" x 5' SilverDuct™	White louvered	2 ZipTorq	111406	6	Display Box	•
4" x 8' SilverDuct™	White louvered	2 ZipTorq	111407	6	Display Box	•
4" x 8' SilverDuct™	White wide mouth bird guard	2 ZipTorq	111408	8	Display Box	•
4" x 8' SilverDuct™	Brown wide mouth bird guard	2 ZipTorq	111528	8	Display Box	•

INDOOR LINT TRAP KITS



Description	Clamps	Part #	Qty	Package	UPC
Bucket only		110496	48	bulk	
		110646	9	Display Box	•

Kits include Bucket and:

4" x 5' SilverDuct™	2 spring	110597	9	Display Box	•
5' V220 Flexible pipe	2 steel	110497	3	ind. box	•

Use to vent ELECTRIC (not gas) dryers indoors. Note: We recommend venting dryers to the outside if at all possible.



SilverDuct™ UL® 2158A clothes dryer transition duct provides flame resistance. However, it crushes easily behind the dryer and is held together with layers of aluminum foil and polyester plastic.

Clothes dryer manufacturers may limit the use of plastics in venting. Check the dryer warranty and installation instructions as well as your local building codes for appropriate use

PRO VINYL HOSE



Thickest Vinyl on the Market.

- steel wire support
- 1" pitch

Useful as bathroom fan venting.
Not approved for dryer venting.



Diameter	Length	Part #	Qty	Package	UPC
3"	5'	110046	12	bulk	
	8'	111534	12	Display Label	•
	8'	110047	12	bulk	
	20'	110048	5	ind. box	•
	50'	110053	4	ind. box	•
4"	5'	110111	12	bulk	
	8'	110052	12	Display Label	•
	8'	110112	12	bulk	
	20'	110059	5	ind. box	•
	50'	110062	4	ind. box	•
With two ZipTorq™ clamps:					
4"	8'	110653	12	Display Bag	•

STANDARD VINYL HOSE

Steel wire support

- 3¼" and 3" diameter are 1" pitch
- 4" diameter is 1½" pitch

Useful as bathroom fan venting.
Not approved for dryer venting.
Check your local codes.



Diameter	Length	Part #	Qty	Package	UPC
3"	5'	110562	12	bulk	
	8'	110563	12	bulk	
	8'	010558	90	bulk	
	20'	110753	28	bulk	
	20'	110564	5	ind. box	•
	50'	110565	4	ind. box	•
3¼"	20'	110054	28	bulk	
	50'	110055	4	ind. box	•
4"	5'	110566	12	bulk	
	8'	110567	12	bulk	
	8'	010559	72	bulk	
	20'	110568	5	ind. box	•
	50'	110569	4	ind. box	•
	50'	010743	144	skid	

VINYL BATH VENT KITS

For installations which do not require UL® labels, these basic vinyl vent kits meet that need. Vinyl is not suitable for clothes dryer venting.

Hose	Hood	Clamps	Part #	Qty	Package	UPC
4" x 8' Vinyl	Wide mouth aluminum	2 ZipTorq	111522	8	Display Box	•
4" x 8' Vinyl	Brown louvered plastic	2 ZipTorq	111510	6	Display Box	•
4" x 8' Vinyl	White louvered plastic	2 ZipTorq	111511	6	Display Box	•
4" x 8' Vinyl	White wide mouth plastic with bird guard	2 ZipTorq	111517	8	Display Box	•



Part #111522



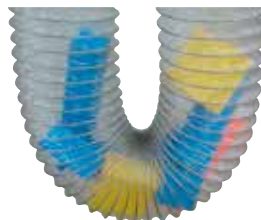
Part #111511



Part #111517

CLEARDUCT™

- Thick PVC (poly-vinyl-chloride) flexible duct
- Durable steel wire supported construction resists crushing and air leakage.



Diameter	Length	Part #	Qty	Package	UPC
4"	8'	100017	12	Display Box	•
	25'	110487	9	bulk	
	50'	110509	4	ind. box	•

STEEL TENSION

- "Spring" clamps
- No tools required



Diameter	Part #	Qty	Package	UPC
3"	110480	100	bulk	
4"	111551	25	Display Card	
	110482	100	bulk	

WORM GEAR

- Galvanized
- Plated steel band, housing and screw



Diameter	Part #	Qty	Package	UPC
3"	111908	100	bulk	
4"	111909	100	bulk	
	111546	25	Display Card	•
6"	111911	40	bulk	

STEEL SCREW

- 1½" Phillips/hex head steel screw
 - 4" Minimum I.D. 3.90", Max 4¼"
- Designed to resist stretching.

*110074 display is 2 clamps per card, 25 cards per case.



Diameter	Part #	Qty	Package	UPC
3"	110065	100	bulk	
4"	110074	25	Display Card	•
	110071	100	bulk	
6"	111417	40	bulk	
2" screw (provides larger diameter)				
4"	110075	100	bulk	

ZIP TORQ™ CLAMP

- Unique polymeric stretch plastic
- Tightens without tools
- Loosens with #2 phillips screwdriver



Diameter	Part #	Qty	Package	UPC
3"-4"	112145	100	bulk	

PLASTIC RATCHET

- Releasable Cable Tie
- Press tab, release and reuse.



Diameter	Part #	Qty	Package	UPC
3"-4"	111423	25	Display Card	•

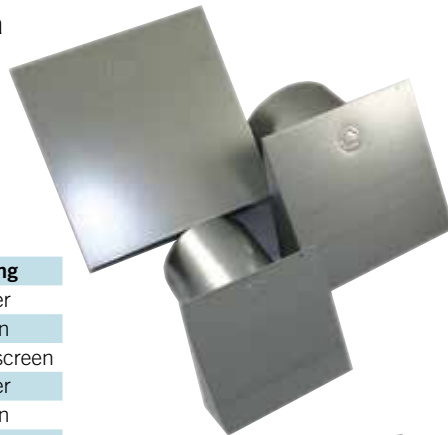
LARGE DIAMETER HOODS WITH TAILS

- Riveted, not caulked
- 1/4" x 1/4" screens mechanically inserted and removable
- Mouth opening exceeds pipe area

**GALVANIZED
26 GAUGE**



Diameter	Tail	Part #	Qty	Opening
4"	6"	111125	12	flapper
		111076	12	screen
		111033	12	flapper & screen
4"	11"	011136	12	flapper
		011088	12	screen
		011023	12	flapper & screen
5"	6"	111127	12	flapper
		111078	12	screen
		111035	12	flapper & screen
5"	11"	111137	6	flapper
		111089	6	screen
		111024	6	flapper & screen
6"	6"	111129	12	flapper
		111080	12	screen
		111037	12	flapper & screen
6"	11"	111139	6	flapper
		111091	6	screen
		111026	6	flapper & screen
7"	6"	111131	10	flapper
		111081	10	screen
		111038	10	flapper & screen
7"	11"	111141	6	flapper
		111093	6	screen
		111027	6	flapper & screen
8"	6"	111132	10	flapper
		111082	10	screen
		111039	10	flapper & screen
8"	11"	111142	6	flapper
		111094	6	screen
		111028	6	flapper & screen
10"	6"	111133	2	flapper
		111083	2	screen
		111040	2	flapper & screen
10"	11"	011143	1	flapper
		011095	1	screen
		011029	1	flapper & screen
12"	6"	111134	2	flapper
		111084	2	screen
		111041	2	flapper & screen
12"	11"	011144	1	flapper
		011096	1	screen
		011030	1	flapper & screen



PN 111070



PN 111125



Hood with flapper and screen.

**ALUMINUM
24 GAUGE**

Diameter	Tail	Part #	Qty	Opening
4"	6"	111145	12	flapper
		111115	12	screen
		111056	12	flapper & screen
4"	11"	011148	12	flapper
		011106	12	screen
		011046	12	flapper & screen
5"	6"	111066	12	flapper
		111117	12	screen
		111058	12	flapper & screen
5"	11"	111097	6	flapper
		111107	6	screen
		111047	6	flapper & screen
6"	6"	111068	12	flapper
		111119	12	screen
		111060	12	flapper & screen
6"	11"	111099	6	flapper
		111109	6	screen
		111049	6	flapper & screen
7"	6"	111070	10	flapper
		111121	10	screen
		111062	10	flapper & screen
7"	11"	111101	6	flapper
		111111	6	screen
		111050	6	flapper & screen
8"	6"	111071	10	flapper
		111122	10	screen
		111063	10	flapper & screen
8"	11"	111102	6	flapper
		111112	6	screen
		111051	6	flapper & screen
10"	6"	111072	2	flapper
		111123	2	screen
		111064	2	flapper & screen
10"	11"	011103	1	flapper
		011113	1	screen
		011052	1	flapper & screen
12"	6"	111073	2	flapper
		111124	2	screen
		111065	2	flapper & screen
12"	11"	011104	1	flapper
		011114	1	screen
		011053	1	flapper & screen

The Builder's Best® PRO versions are heavier and stronger.



LARGE DIAMETER HOODS NO TAILS

- Riveted, not caulked
- 1/4"x 1/4" screens mechanically inserted and removable
- Mouth opening exceeds pipe area

GALVANIZED
26 GAUGE



Diameter	Part #	Qty	Opening
4"	111201	20	flapper
	111215	20	screen
	111229	20	flapper & screen
5"	111203	12	flapper
	111217	12	screen
	111231	12	flapper & screen
6"	111205	12	flapper
	111219	12	screen
	111233	12	flapper & screen
7"	111207	12	flapper
	111221	12	screen
	111235	12	flapper & screen
8"	111209	12	flapper
	111223	12	screen
	111237	12	flapper & screen
10"	111211	2	flapper
	111225	2	screen
	111239	2	flapper & screen
12"	111213	2	flapper
	111227	2	screen
	111241	2	flapper & screen



PN 111159

ALUMINUM
24 GAUGE

Diameter	Part #	Qty	Opening
4"	111159	20	flapper
	111173	20	screen
	111187	20	flapper & screen
5"	111161	12	flapper
	111175	12	screen
	111189	12	flapper & screen
6"	111163	12	flapper
	111177	12	screen
	111191	12	flapper & screen
7"	111165	12	flapper
	111179	12	screen
	111193	12	flapper & screen
8"	111167	12	flapper
	111181	12	screen
	111195	12	flapper & screen
10"	111169	2	flapper
	111183	2	screen
	111197	2	flapper & screen
12"	111171	2	flapper
	111185	2	screen
	111199	2	flapper & screen

6" HOOD WITH SPRING LOADED DAMPER

- Aluminum
- Back draft spring-loaded damper



Diameter	Tail	Part #	Qty	Package	UPC
6"	6"	111387	12	bulk	
	6"	011641	1	ind. box	•
	2¾"	111906	8	bulk	
Faceplate only:					
6"	n/a	111811	12	bulk	

RANGE HOOD VENT

Aluminum

- 3¼" x 10" long rectangular tail
- Back draft spring-loaded
- Foam damper seals for quiet closure



Heavy Duty Plastic

- UV Stabilized polymer resin
- 3¼" x 10" x 1¼" long rectangular tail
- Removable damper for intake or exhaust
- ½" x ½" molded grid
- Drip edge on flanged base to help drain away water



PRIMEX
CONSTRUCTION

Tail	Color	Part #	Qty	Package	UPC
Aluminum:					
5"		111929	14	bulk	•
11"		111377	8	bulk	•
Primex Heavy Duty Plastic:					
1¼"	Gray	111872	6	bulk	
1¼"	White	111873	6	bulk	

P-TANIUM™ GALVANIZED HOOD

- 11½" tailpipe
- Ships gray, ready to paint
- Back-draft flapper

Paintable galvanized finish ships as gray, but accepts standard house paint.

PN 110889



PN 110885



PN 111157



Diameter	Part #	Qty	Package	UPC
Wide Mouth:				
3"	110887	12	bulk	•
4"	110648	6	Display Tray	•
	111430	8	Display Card	•
	110889	12	bulk	
Standard Mouth:				
3"	110883	12	bulk	
4"	110885	12	bulk	•
	110750	4	ind. box	•
Wide Mouth with flapper, screen and tail:				
4"	110891	12	bulk	
Hood only, no tailpipe:				
Standard Mouth:				
4"	111419	24	bulk	
Wide Mouth:				
4"	111157	24	bulk	
P-Tanium™ Trim Plates				
3"	110056	100	bulk	
4"	110057	100	bulk	

BRIGHT SPANGLED GALVANIZED HOOD

- 11½" tailpipe
- Back-draft flapper



Diameter	Part #	Qty	Package	UPC
Wide mouth:				
3"	110770	12	bulk	
4"	110771	12	bulk	
No tail wide mouth:				
4"	110699	24	bulk	
Standard mouth:				
4"	110732	12	bulk	

P-TANIUM™ AIR INTAKE

- Intakes do not have flappers
- Grid is metal ¼" x ¼"
- 11½" Tailpipe
- P-Tanium™ paintable galvanized finish



Diameter	Part #	Qty	Package	UPC
4"	110729	12	bulk	

The Builder's Best® PRO versions are heavier and stronger.



WIDE MOUTH ALUMINUM HOOD

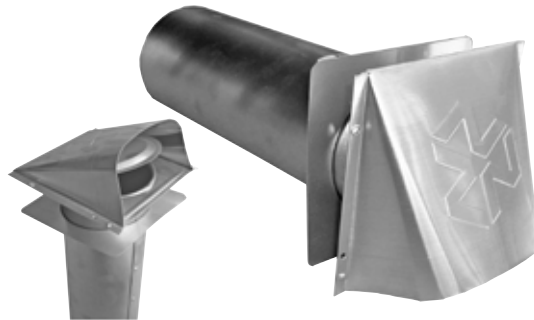
- 1 1/2" tailpipe
- Back plate
- Back-draft flapper
- Fully assembled, riveted tailpipe



Diameter	Part #	Qty	Package	UPC
3"	110270	12	bulk	•
3"	110328	4	ind. box	•
4"	110170	6	Display Tray	•
	110271	12	bulk	•
	110326	4	ind. box	•
With 4" tailpipe:				
4"	110791	18	bulk	
Faceplate only:				
4"	110557	24	bulk	
Faceplate with Flapper and Screen (no tailpipe):				
4"	110786	24	bulk	
With tail, flapper and screen:				
4"	110684	12	bulk	

STANDARD MOUTH ALUMINUM HOOD

- 1 1/2" tailpipe
- Back plate
- Back-draft flapper
- Fully assembled, riveted tailpipe



Diameter	Part #	Qty	Package	UPC
3"	110276	12	bulk	•
	110278	4	ind. box	•
4"	110277	12	bulk	•
	110279	4	ind. box	•

HEAVY DUTY WALL CAP

- UV stabilized polymer resin
- Drip edge on flanged base to help drain away water
- Removable damper
- 1/2" x 1/2" molded grid
- Intake or Exhaust

Regular Profile:



Low Profile:



Diameter	Part #	Qty	Package
White:			
4"	111775	4	bulk
5"	111776	4	bulk
6"	111777	4	bulk
7"	111778	2	bulk
Gray:			
4"	111781	4	bulk
5"	111782	4	bulk
6"	111783	4	bulk
7"	111784	2	bulk
Low Profile:			
White:			
7" or 8"	111867	4	bulk
Gray:			
7" or 8"	111752	4	bulk

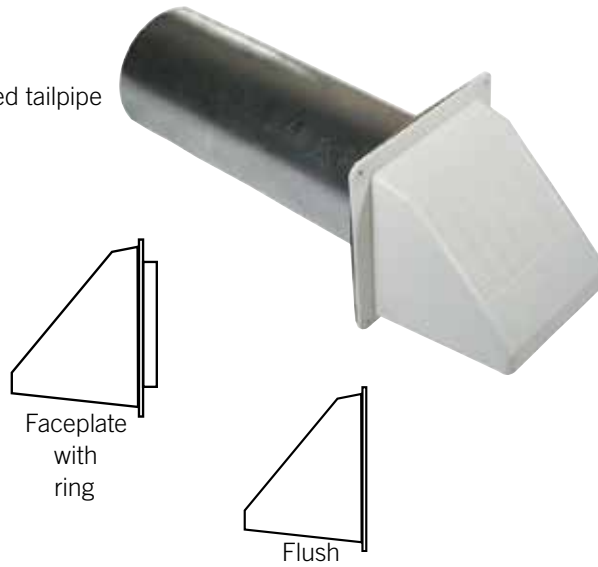
* Other colors available upon request.
Lead times will vary.

Low Profile:



PLASTIC WIDE MOUTH HOOD

- 11" tailpipe
- Back plate
- Back-draft flapper
- Fully assembled, riveted tailpipe



Diameter	Color	Part #	Qty	Package	UPC
3"	White	111243	8	bulk	
	Brown	111378	8	bulk	
4"	White	010179	6	Display Tray	•
	White	110164	8	Display Card	•
	White	110113	8	bulk	•
	White	110330	4	ind. box	•
	Brown	110410	8	Display Card	•
	Brown	110177	6	Display Tray	•
	Brown	110284	8	bulk	•
	Brown	110332	4	ind. box	•
Faceplate with ring:					
3"	White	111373	8	bulk	
	Brown	111374	8	bulk	
4"	White	110119	8	bulk	
	White	010723	336	skid (gaylord)	
	Brown	110285	8	bulk	
	Brown	010724	336	skid (gaylord)	
Faceplate for flush installation (no ring):					
4"	White	110766	8	bulk	
	White	010768	392	skid (gaylord)	
	Brown	110767	8	bulk	
	Brown	010769	392	skid (gaylord)	

BIRD GUARD HOOD

- 11" fully assembled, riveted tailpipe
- Aluminum trim plate
- Back-draft flapper
- Wide mouth plastic hood

This hood is not recommended for dryer venting, but if so used, check screen frequently for lint build-up.

- ½" x ½" pest grid
- Snaps in and removable for cleaning.



Diameter	Color	Part #	Qty	Package	UPC
3"	White	111365	8	bulk	
	Brown	111368	8	bulk	
4"	White	111381	8	bulk	
	White	111411	6	Display Tray	•
	Brown	111384	8	bulk	
Faceplate with ring:					
3"	White	111375	8	bulk	
	Brown	111376	8	bulk	
4"	White	111732	8	bulk	
	Brown	111733	8	bulk	
Faceplate for flush installation (no ring):					
4"	White	111391	8	bulk	
	Brown	111392	8	bulk	

J-BLOCK VENT HOOD

- Plastic hood for brick, siding & stucco applications
- Weighted design helps prevent wind noise and animal entry.
- 11" tailpipe included
- 7.5" wide by 8.5" tall face

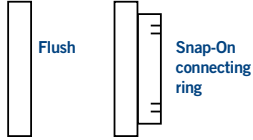


Diameter	Color	Part #	Qty	Package
With 11" Tailpipe:				
Reversible trim ring adjusts from 0 to ½":				
4"	White	111705	12	bulk
	Brown	111712	12	bulk
Reversible trim ring adjusts from ½" to 1.15":				
4"	White	111706	12	bulk
	Brown	111713	12	bulk
Faceplates only:				
Reversible trim ring adjusts from 0 to ½":				
4"	White	111714	12	bulk
	Brown	111715	12	bulk
Reversible trim ring adjusts from ½" to 1.15":				
4"	White	111716	12	bulk
	Brown	111717	12	bulk

LOUVERED PLASTIC HOODS WITHOUT TAILPIPES

- Screens are 1/4" x 1/4" molded grid
- Hoods with screens are not recommended for dryer venting.

Side Profile

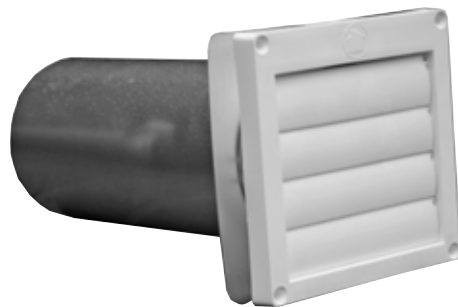
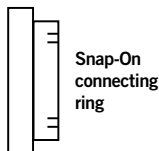


Diameter	Color	Part #	Qty	Package	Type
3"	White	110749	12	bulk	snap on ring
		110340	12	bulk	ring with screen
		111149	24	bulk	flush
3"	Brown	110872	12	bulk	snap on ring
		110342	12	bulk	ring with screen
		111151	12	bulk	flush
4"	White	111424	12	Display Card	snap on ring
		110286	12	bulk	snap on ring
		110288	12	bulk	ring with screen
		111153	24	bulk	flush
		110291	24	bulk	flush with screen
4"	Brown	111545	12	Display Card	snap on ring
		110287	12	bulk	snap on ring
		110292	12	bulk	ring with screen
		111155	24	bulk	flush
		110294	24	bulk	flush with screen
5"	White	110830	12	bulk	snap on ring
		110831	12	bulk	ring with screen
		110832	12	bulk	flush
		110833	12	bulk	flush with screen
5"	Brown	110834	12	bulk	snap on ring
		110835	12	bulk	ring with screen
		110836	12	bulk	flush
		110837	12	bulk	flush with screen

Diameter	Color	Part #	Qty	Package	Type
6"	White	110838	12	bulk	snap on ring
		110839	12	bulk	ring with screen
		110840	12	bulk	flush
6"	Brown	110841	12	bulk	flush with screen
		110842	12	bulk	snap on ring
		110843	12	bulk	ring with screen
6"	White	110844	12	bulk	flush
		110845	12	bulk	flush with screen
		110846	12	bulk	snap on ring
7"	White	110847	12	bulk	ring with screen
		110848	12	bulk	flush
		110849	12	bulk	flush with screen
7"	Brown	110850	12	bulk	snap on ring
		110851	12	bulk	ring with screen
		110852	12	bulk	flush
7"	White	110853	12	bulk	flush with screen
		110854	12	bulk	snap on ring
		110855	12	bulk	ring with screen
8"	White	110856	12	bulk	flush
		110857	12	bulk	flush with screen
		110858	12	bulk	snap on ring
8"	Brown	110859	12	bulk	ring with screen
		110860	12	bulk	flush
		110861	12	bulk	flush with screen

LOUVERED PLASTIC HOODS WITH TAILPIPES

- 11" tailpipe
- Aluminum trim plate
- Fully assembled
- Faceplate has 4 louvers



LOUVER REPLACEMENTS

Diameter	Color	Part #	Qty	Package	UPC
3"	White	110280	12	bulk	
	White	110334	4	ind. box	•
	Brown	110281	12	bulk	
4"	White	111412	12	Display Card	•
	White	110282	12	bulk	•
	White	110336	4	ind. box	•
	Brown	111414	12	Display Card	•
	Brown	110283	12	bulk	•
	Brown	110338	4	ind. box	•
Unassembled:					
4"	White	111692	12	bulk	
	Brown	111734	12	bulk	
Louver replacements					
4"	White	110003	100	bulk	
	Brown	110004	100	bulk	

MINI LOUVER FRESH AIR INTAKE/EAVE VENT

- Locking ring connection on back
- Screens are 1/4" x 1/4" molded grid with fixed louvers
- Works for thru-wall as well as eave venting



PN 110681



PN 110812



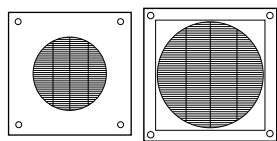
PN 111249

Diameter	Color	Part #	Qty	Package	Back treatment
3"	White	110975	12	bulk	flush mount
		110694	12	bulk	snap on ring
		110695	12	bulk	3" tail
		110893	12	bulk	10" tail
		111251	16	bulk	3 ft flex metal duct
3"	Brown	110976	12	bulk	flush mount
		110682	12	bulk	snap on ring
		110681	12	bulk	3" tail
		110683	12	bulk	10" tail
		110977	16	bulk	3 ft flex metal duct
4"	White	110751	12	bulk	flush mount
		110811	12	bulk	snap on ring
		110812	12	bulk	3" tail
		110813	12	bulk	10" tail
		111249	16	bulk	3 ft flex metal duct
4"	Brown	110754	12	bulk	ring & bug screen
		110972	12	bulk	snap on ring
		110752	12	bulk	flush mount
		110519	12	bulk	3" tail
		110971	12	bulk	10" tail
5"	White	110973	16	bulk	3 ft flex metal duct
		110974	12	bulk	ring & bug screen
		110894	12	bulk	snap on ring
		110895	12	bulk	ring & screen
		110896	12	bulk	flush mount
5"	White	110897	12	bulk	flush with screen

Diameter	Color	Part #	Qty	Package	Back treatment
5"	Brown	111003	12	bulk	snap on ring
		111004	12	bulk	ring & screen
		111005	12	bulk	flush mount
		111006	12	bulk	flush with screen
6"	White	110898	12	bulk	snap on ring
		110899	12	bulk	ring & screen
		111918	4	bulk	4" tail
		110900	12	bulk	flush mount
		110901	12	bulk	flush with screen
6"	Brown	111007	12	bulk	snap on ring
		111008	12	bulk	ring & screen
		111503	12	bulk	flush mount
		111010	12	bulk	flush with screen
7"	White	110902	12	bulk	snap on ring
		110903	12	bulk	ring & screen
		110904	12	bulk	flush mount
7"	Brown	110905	12	bulk	flush with screen
		111011	12	bulk	snap on ring
		111012	12	bulk	ring & screen
8"	White	111013	12	bulk	flush mount
		111014	12	bulk	flush with screen
		110906	12	bulk	snap on ring
		110907	12	bulk	ring & screen
8"	Brown	110908	12	bulk	flush mount
		110909	12	bulk	flush with screen
		111015	12	bulk	snap on ring
		111016	12	bulk	ring & screen
		111017	12	bulk	flush mount
111018	12	bulk	flush with screen		

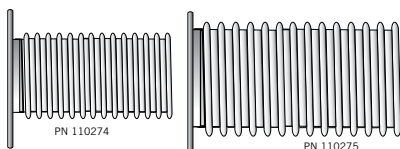
MICRO LOUVER EAVE VENT

This versatile eave vent is good for bathroom fan venting or fresh air intakes. This product was formerly the "Pro-Vent™ Eave Vent".



PN 110272

PN 110273



PN 110274

PN 110275



PN 110556



PN 110555



PN 110274

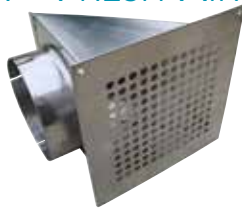


PN 110275

Diameter	Part #	Qty	Package
Faceplate only:			
3"	110272	20	bulk
4"	110273	20	bulk
With 3 ft V230 flexible aluminum pipe:			
3"	110274	16	bulk
4"	110275	16	bulk
With 3" collar:			
3"	110556	8	bulk
4"	110555	8	bulk

METAL EAVE VENT WITH SCREEN - FRESH AIR INTAKE

- Aluminum construction
- Intakes do not have flappers, meeting IBC.
- Grid is metal ¼" x ¼" , with ¼" round holes
- Female snap-lock collar



Diameter	Part #	Qty	Package
Fresh air intake:			
4"	110189	8	bulk
Exhaust with flapper and female snap-lock™ fitting:			
4"	110188	8	bulk
Exhaust with flapper and male snap-lock™ fitting:			
4"	110199	8	bulk

METAL EAVE VENT WITH SCREEN - EXHAUST

- Back draft flapper
- Aluminum construction
- Grid is metal ¼" x ¼" , with ¼" round holes



PLASTIC EAVE VENT - EXHAUST

- Polypropylene molded plastic
- Pre-drilled mounting holes
- Locking ring connection on back
- Available with ¾" connecting ring OR 3" long aluminum tail
- Back draft flapper



Diameter	Color	Part #	Qty	Package	UPC
With ¾" connecting ring:					
3"	White	111830	12	bulk	
	Brown	111831	12	bulk	
4"	White	111802	12	bulk	
	Brown	111803	12	bulk	
With 3" long aluminum tail:					
3"	White	111806	12	bulk	
	Brown	111807	12	bulk	
4"	White	111804	12	bulk	•
	Brown	111805	12	bulk	

PLASTIC PREMIUM EAVE VENT

- One piece design
- No leaky seams
- Made from UV stabilized polymer resin
- Back draft flapper



Diameter	Color	Part #	Qty	Package	UPC
4"	White	111858	12	bulk	
5"	White	111859	12	bulk	
4"-8" Flush (adapters on page 31):					
4"-8"	White	111941	6	bulk	screen
4"-8"	White	111942	6	bulk	no screen

SOFFIT VENTS

- Extra long collar for better duct connection
- Molded in mesh screen
- UV Stabilized polymer resin
- Secure friction fit



Diameter	Color	Part #	Qty	Package	UPC
2"	White	111852	50	bulk	•
4"	White	111869	16	bulk	•
5"	White	111870	50	bulk	•
6"	White	111871	12	bulk	•

ADJUSTABLE DIFFUSERS

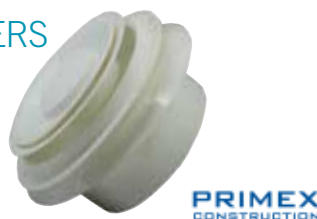
- Dual flow for intake or exhaust
- Stainless steel grip "clip" for snug fit
- Foam gasket allows for tight seal on uneven surfaces
- Lock nut included to adjust air flow



Diameter	Part #	Qty	Package
4"	111862	12	bulk
5"	111864	12	bulk
6"	111865	8	bulk

PREMIUM ADJUSTABLE DIFFUSERS

- Dual flow for intake or exhaust
- Adjustment screw to set airflow
- Secure friction fit
- Trim ring snaps over flange and hides mounting screws



Diameter	Part #	Qty	Package
4"	111896	25	bulk
6"	111898	25	bulk
8"	111900	15	bulk

PEST GUARD

- Universal cap fits over most thru wall vent hoods
- Hinge action allows for easy cleaning.



Color	Part #	Qty	Package	UPC
White	111572	12	bulk	
	111573	12	Display Label	

11" ALUMINUM TAILPIPES



Diameter	Part #	Qty	Package	UPC
3"	110866	24	bulk	
4"	110867	24	bulk	
5"	110862	24	bulk	
6"	110863	24	bulk	
7"	110864	24	bulk	
8"	110865	24	bulk	

DRAFT STOPPER

- Helps prevent cold air from entering home through clothes dryer by inserting between clothes dryer duct and wall pipe.



Diameter	Part #	Qty	Package	UPC
4"	111577	6	bulk	

DRYER HEAT DIVERTER

- Manual control directs heat into home in cold weather or outside in warm weather.



Diameter	Part #	Qty	Package	UPC
4"	111575	6	bulk	

ALUMINUM TRIM PLATES



Diameter	Part #	Qty	Package	UPC
3"	110126	100	bulk	
4"	110122	100	bulk	

WINDOW PLATE

- 12" high by 18" wide Aluminum



Description	Part #	Qty	Package	UPC
3" opening	110494	25	bulk	
4" opening	110495	25	bulk	

INCREASER & REDUCER

- Connect ducts of different diameters.



Part #110493

Part # 110492

Part #110290

Description	Part #	Qty	Package	UPC
Aluminum increaser 3" to 4"	110493	12	bulk	•
Aluminum reducer 4" to 3"	110492	12	bulk	•
Plastic increaser/reducer 3 1/4"	110290	10	bulk	•

DUCT COUPLING

- Aluminum coupling to connect pieces of pipe.



Part #110490, #110491 and #111536 crimped both ends



Part #110137 one end crimped one end beaded

Description	Diameter	Length	Part #	Qty	Package	UPC
Crimped both ends:						
Aluminum	3"	3"	110490	12	bulk	•
	4"	3"	110491	12	bulk	•
	6"	3"	111536	6	bulk	•
One end crimped, one end beaded:						
Aluminum	4"	3"	110137	25	bulk	

DUCT COUPLING

- Galvanized coupling
- Connect pieces of pipe

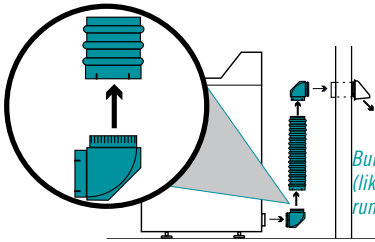


Part #111690

Description	Diameter	Length	Part #	Qty	Package	UPC
Galvanized	3"	4"	111689	16	bulk	
	4"	4"	111690	9	bulk	
	6"	4"	111691	4	bulk	

V830 BUILDER'S BEST® PIPE

- Best choice for dryer venting
- 4" Aluminum Snap-Lock™ Fittings



Builder's Best® Flexible Pipe is designed to SNAP-LOCK™ to elbows (like the Close Elbow™ pictured) or to other pieces of V830 for longer runs.



Diameter	Length	Part #	Qty	Package	UPC
4"	6'	110129	12	Display Bag	•
	6'	010016	12	Display Tray	•
	5'	110138	15	bulk	
	6'	110107	12	bulk	
	8'	110120	20	bulk	
	12'	110079	20	bulk	
With two steel screw clamps:					
4"	6'	110092	12	bulk	

V530 E-Z-FASTEN™

- 4" Aluminum Male Snap-Lock Fitting
- One soft-cuff end



Diameter	Length	Part #	Qty	Package	UPC
4"	5'	110130	5	Display Bag	•
	5'	010150	15	Display Bag	•
	5'	110105	15	bulk	
	8'	110180	20	bulk	
E-Z-Fasten™ Shortie™ includes one steel screw clamp:					
4"	2'	110160	30	bulk	

V430 READI-PIPE™

- 4" aluminum soft cuff both ends
- Soft cuff ends are ready to clamp to other components.



Diameter	Length	Part #	Qty	Package	UPC
4"	4'	110088	20	bulk	
	5'	110089	15	bulk	
	6'	110090	12	bulk	
	8'	110091	12	bulk	
4" x 8' Readi-Pipe™ Display Bag includes two steel clamps:					
4"	8'	110131	12	Display Bag	•

EXTENSION COLLAR

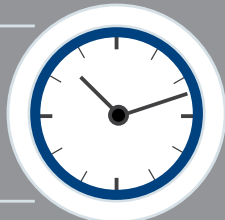
- 4" diameter x 3" aluminum collar
- Snap-lock fittings



Diameter	Length	Part #	Qty	Package
4"	3"	110103	25	bulk

MONEY SAVINGS

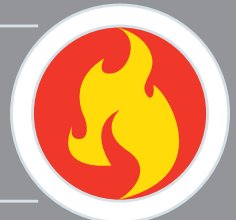
**ENHANCED
DRYER
EFFICIENCY
AND LIFESPAN**



**MEETS
DRYER
MANUFACTURER
RECOMMENDATIONS**



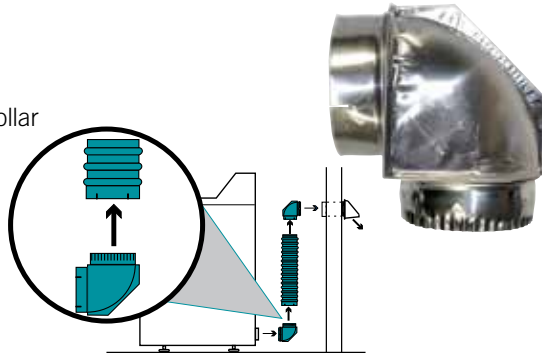
**FLAME
RESISTANT
ALL METAL
CONSTRUCTION**



SAF-T-DUCT® Dryer Venting is the trusted solution for professional installers nationwide. These parts are available in several retail programs. It meets all clothes dryer manufacturer specifications. Heavy duty aluminum, Snap-Lock™ fittings, unique elbows and periscopes round out this line.

CLOSE ELBOW®

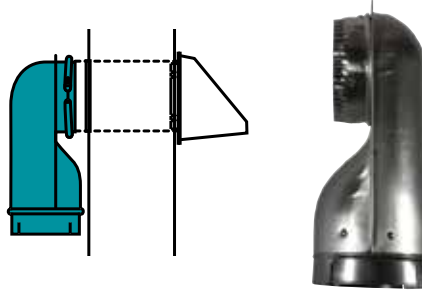
- Turns 90° within 4"
- One male rotating snap-lock™ collar
- One female rotating snap-lock™ collar
- Best choice for 90° turns, especially on the dryer.



Diameter	Part #	Qty	Package	UPC
4"	110161	6	Display Card	•
	010151	24	Display Card	•
	110108	24	bulk	

WALL OFFSET ELBOW®

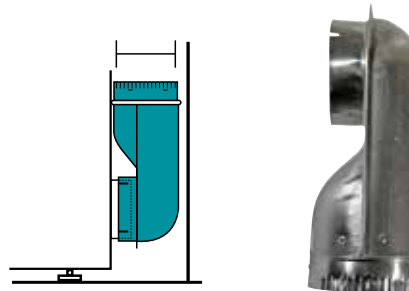
- Turns 90° within 4"
- One male rotating snap-lock™ collar
- One female snap-lock™ collar
- Use when outlet pipe in wall protrudes up to 2.5" and cannot be trimmed.



Diameter	Part #	Qty	Package	UPC
4"	110162	4	Display Card	•
	010152	20	Display Card	•
	110109	20	bulk	

DRYER OFFSET ELBOW®

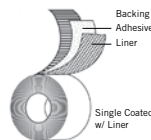
- Turns 90° within 4"
- One female rotating snap-lock™ collar
- One male snap-lock™ collar
- Use when outlet pipe on dryer protrudes up to 2.5" and cannot be trimmed.
- Can also be used on wall outlet pipe if pipe is too large for Wall Offset Elbow®



Diameter	Part #	Qty	Package	UPC
4"	110165	4	Display Card	•
	010155	20	Display Card	•
	110110	20	bulk	

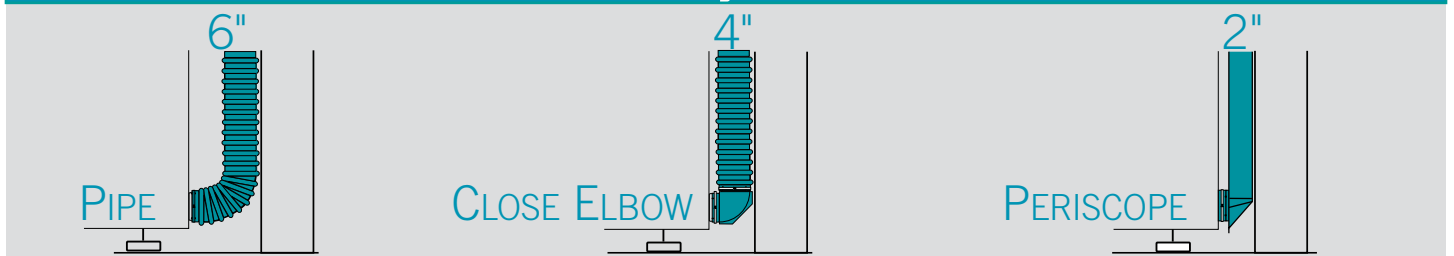
FOIL TAPE

- Aluminum foil printed backing
- Acrylic adhesive
- Paper liner
- Aluminum color
- Used to seal connections



Description	Part #	Qty	Package
2.5" x 60 yards	111704	16	bulk

Clearance behind dryer • SPACE SAVINGS



SAF-T-DUCT® Dryer Venting is the trusted solution for professional installers nationwide. These parts are available in several retail programs. It meets all clothes dryer manufacturer specifications. Heavy duty aluminum, Snap-Lock™ fittings, unique elbows and periscopes round out this line.



V450 UL® DRYER TRANSITION DUCT



BUILDER'S BEST® PIPE



Diameter	Length	Part #	Qty	Package	UPC
4"	6'	110548	12	bulk	

E-Z-FASTEN™ PIPE



Diameter	Length	Part #	Qty	Package	UPC
4"	8'	110546	12	bulk	

READI-PIPE™ PIPE



Diameter	Length	Part #	Qty	Package	UPC
4"	6'	111700	12	bulk	
	8'	110545	12	bulk	

PLAIN END PIPE



Diameter	Length	Part #	Qty	Package	UPC
4"	8'	110592	12	bulk	

UL® METAL DRYER VENT KITS

Single Elbow Kit:

- One piece 8' UL® Flexible pipe
- One Close Elbow®
- One crimped (male) fitting
- Two metal clamps



UL® Single Elbow Kit

Kit	Length	Part #	Qty	Package	UPC
Single Elbow	8'	111718	4	Ind. Box	
Close Loop™	6'	111693	4	Ind. Box	
Close Loop™	6'	111926	4	Display Box	•
Over-The-Top®	8'	111920	4	Ind. Box	
Installer's Kit	8'	111922	4	Ind. Box	

Close Loop Kit:

- One piece 6' UL® Flexible pipe
- Two Close Elbows®
- Two metal clamps

Over-The-Top® Kit

- 2 - 4 ft pipe sections
- 2 - Close Elbows® (attached)
- 2 - clamps for wall and dryer connections
- 1 - wall plate for flush clearance

Installer's Kit®

- 1 - 4 ft pipe attached to a Close Elbow®
- 1 - 4 ft pipe attached to a Wall Offset elbow®
- 1 - extension collar (for recessed wall pipe)
- 2 - clamps for wall and dryer connection



UL® 6' Close Loop Kit



UL® Over-The-Top®

UL® Installer's Kit®



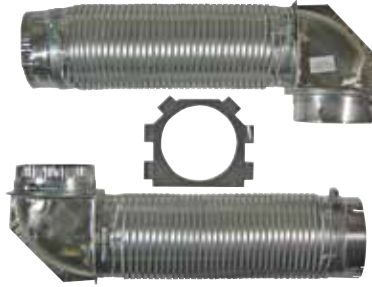
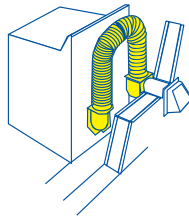
Builder's Best is proud to partner with Underwriters Laboratories to label the first complete line of ALL METAL UL® 2158 dryer venting which complies with clothes dryer manufacturer recommendations. Our valued partners have carried this for many years, as it continues to gain support in the industry as the most efficient solution.

OVER-THE-TOP® SNAP-LOCK™ DRYER VENT KIT

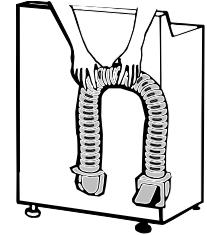


Installs in 4 1/2", when wall pipe is trimmed flush and wall plate is used. Swivel collars on elbows allow dryer to be pulled away from wall for cleaning without disconnecting.

- Kit contains:
 - 2 - 4 ft pipe sections
 - 2 - Close Elbows (attached)
 - 2 - clamps for wall and dryer connections
 - 1 - wall plate for flush clearance
- Total kit length: 8 feet
- Pipe snap-locks together, as final step



Part #	Qty	Package	UPC
110171	4	Display Box	•
110127	6	bulk	
UL® version			
111920	4	Ind. Box	



INSTALLER'S KIT® WITH SNAP-LOCK™ DRYER VENT KIT



Wall offset elbow allows the wall pipe to protrude up to 2 1/2" without trimming. Box is kraft with UPC barcode and instructions printed in black on the outside.

- Kit contains:
 - 1 - 4 ft pipe section attached to a close elbow
 - 1 - 4 ft pipe section attached to a wall elbow
 - 1 - extension collar (for recessed wall pipe)
 - 2 - clamps for wall and dryer connection
- Total kit length: 8 feet

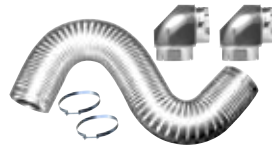


Part #	Qty	Package	UPC
110095	4	Ind. Box	•
110096	6	bulk	
UL® version			
111922	4	Ind. Box	

METAL DRYER VENT KITS WITH ELBOWS



- One piece Flexible pipe
- Two Close Elbows™
- Four metal clamps



Pipe	Part #	Qty	Package	UPC
4" x 6' V830 Builder's Best® Loop Kit*	110043	4	Ind. Box	•
*This kit only requires two clamps because of the Snap-Lock Pipe.				
4" x 6' V430 Readi-Pipe™ Loop Kit	110049	4	Ind. Box	•
4" x 8' V430 Readi-Pipe™ Loop Kit	110050	4	Ind. Box	•

METAL DRYER VENT KITS WITH HOODS

- V230 plain ends flexible pipe
- Two metal clamps
- Hoods have 10" tails and may require assembly



- V220 plain ends flexible pipe
- Two Steel Screw metal clamps
- Hoods may require assembly



Pipe	Hood Style	Part #	Qty	Package	UPC
4" x 5' V230	Wide Mouth Aluminum	112101	4	Ind. Box	•
4" x 8' V230	Wide Mouth Aluminum	110536	4	bulk	
4" x 8' V220	White Wide Mouth Plastic	110625	12	Ind. Box	•
4" x 8' V220	Brown Wide Mouth Plastic	110626	12	Ind. Box	•
4" x 8' V220	Brown Louvered Plastic	112100	6	Ind. Box	•
4" x 8' V220	White Louvered Plastic	111405	6	Display Box	•
4" x 5' V220	Wide Mouth Aluminum	110537	4	Display Box	•

ZERO PERISCOPE™

- Available in 0-5 and 0-18 lengths
- Use where outlets overlap or are very close
- Baffles help direct airflow in 3-5" situations
- Sections are not reversible



PN 110144



PN 110172

Length	Part #	Qty	Package	UPC
0-5"	with baffle	110175	9 Display Card	•
	no baffle	110144	9 bulk	
	no baffle	110149	8 Ind. Box	•
0-18"	with baffle	110172	4 Display Box	•
	with baffle	110128	4 Display Bag	•
	with baffle	010158	8 Display Bag	•
	with baffle	110146	8 bulk	
	with baffle	110148	4 Ind. Box	•

18-29" PERISCOPE

- Reaches side of most dryers
- Two piece assembly



PN 110173

Length	Part #	Qty	Package	UPC
18-29"	with baffle	110173	4 Display Box	•
	with baffle	110133	4 Display Bag	•
	with baffle	010153	9 Display Bag	•
	with baffle	110114	9 bulk	
	with baffle	110116	4 Ind. Box	•

29-50" PERISCOPE

- Reaches top of most dryers
- Four piece assembly



PN 110174

Length	Part #	Qty	Package	UPC
29-50"	with baffle	110174	4 Display Box	•
	with baffle	110117	4 Ind. Box	•

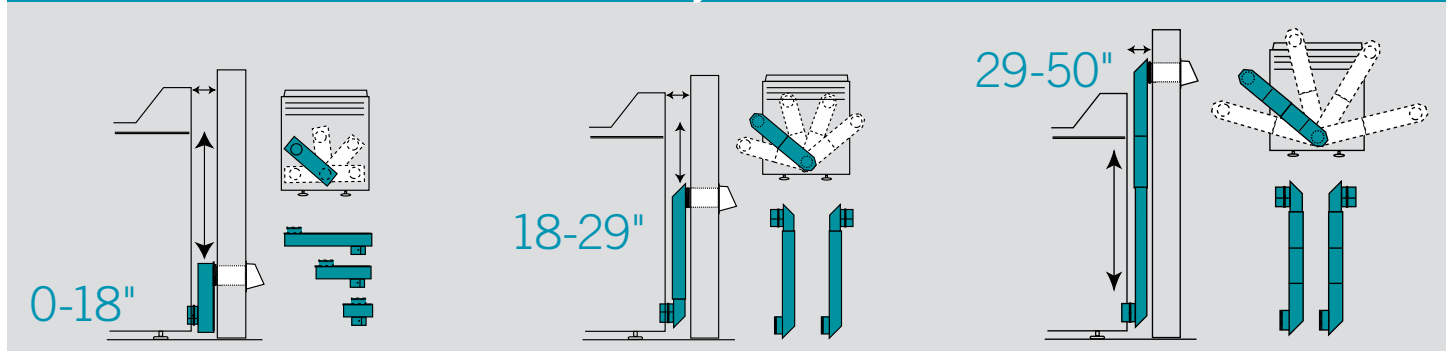
EXTENSION PIECES

- 2" x 6" rigid metal with no fittings
- Slide into and over 18-29, 29-50 and 29-74" sections to lengthen.
- Use aluminum tape to secure the sections



Length	Part #	Qty	Package
23" extension	110141	8	bulk
43" extension	110142	8	bulk

Slide • Rotate • Adjust • Maintain Airflow



SAF-T-DUCT® Periscopes are 2" x 6" rigid aluminum with 4" draw-band collars and Snap-Lock™ crimped fittings. These periscopes reduce the space needed behind the dryer from 6" with pipe along to 2" WITHOUT reducing airflow. We cover the widest range of lengths in the industry.

GALVANIZED PERISCOPE IN-WALL PERISCOPE/ DRYER VENT ROUGH-IN SYSTEM



- 29" to 74" length (6' version)
- 30 Gauge Galvanized Steel
- In-wall (prior to dry-wall)
- Standard 4" diameter fittings
- Mounting strap included
- 6' or 8' length (for 8' or 10' ceilings)



Description	Part #	Qty	Package
6' Galvanized Periscope	110868	3	Ind. Box
8' Galvanized Periscope	110869	3	Ind. Box

ALUMINUM PERISCOPE IN-WALL PERISCOPE/ DRYER VENT ROUGH-IN SYSTEM



- 29" to 74" length
- 26 gauge aluminum
- Four telescoping sections
- One male snap-lock fitting
- One female snap-lock collar
- Mounting strap included



Description	Part #	Qty	Package	UPC
6' Aluminum Periscope	110094	3	Display Box	•
	110140	3	Ind. Box	•

BUILDER'S BEST® DRYER EAVE VENT



- 4" collar
 - Back draft flapper
 - No screen per IBC building codes
 - Installs flush with eave
- Good for clothes dryer venting.



Description	Part #	Qty	Package	UPC
4" female snap-lock collar	110166	8	Display Card	•
	110139	8	bulk	
4" male crimped collar	110200	8	bulk	

TRANSITIONS



110518



111396



111850

Description	Part #	Qty	Package
Rectangle to round	110518	12	bulk
Round to oval	111396	16	bulk
Plastic squeeze elbow	111850	9	bulk

① Rectangle to Round Transition



② Clean finish leaving room for duct



③ Dryer is close without crushing duct



DRYER OUTLET BOX

- One Self trimming unit:
18" wide by 24" high
- Fits all 16" centers 2x4's and 2x6's;
- Six prescored, true 4" diameter knockouts in most common positions
- Six starburst knockouts for gas connections and venting
- Plastic meets UL® standard 94HB tests for flammability



Description	Part #	Qty	Package	UPC
Single box	110697	10	bulk	
	110698	3	Ind. Box	
	110696	3	Display Box	•
Box with round to oval adapter/fitting:				
	111563	3	Display Box	•

DRYER OUTLET BOX KIT

Kit Includes:

Dryer Outlet Box

- One Self trimming unit:
18" wide by 24" high
- Fits all 16" centers 2x4's and 2x6's;
- Six prescored, true 4" diameter knockouts most common positions
- Six starburst knockouts for gas connection
- Plastic meets UL® 94HB tests for flammal

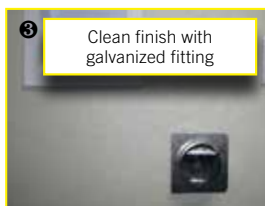
One Periscope

- Periscope for 8' wall or 10' wall

Two rectangle to round transitions



Description	Part #	Qty	Package
Kit for 8' wall	111000	5	Ind. Box
Kit for 10' wall	111001	5	Ind. Box



< The photo on the left shows a 6' galvanized periscope installed with fittings facing the same direction. The bottom outlet is installed 19" off the floor to allow for easier dryer hookups.

It is often not possible to vent using a through-wall vent hood. The Builder's Best® aluminum dryer eave vent maintains that critical airflow with the ultimate low profile! It is hidden from view within the eave, and even the lightweight back-draft flapper is designed to lay open gently while in use without making a sound. Lint from the dryer is easily dispersed into the air. This is the perfect complement to the in-wall periscope.

The photo on the right shows the In-Wall Periscope with the Dryer Outlet Box installed at the floor and the round to rectangle transition going through the header. >



METAL ROOF CAPS

GALVANIZED

- 26 gauge bright spangled galvanized
- Removable ¼" x ¼" screen
- Back-draft flapper
- Available with 4" collar and flush



011755



011756



011774

BLACK

- 26 gauge galvanized steel
- Black powder coat finish
- Removable ¼" x ¼" screen
- Back draft flapper
- Available with 4" collar and flush



12635

Kit #012640 includes:

- One black roof cap with 4" diameter collar
- One 4" diameter x 8' UL® 181 Foil Duct
- One 3-4" Plastic Increaser/Reducer
- Two plastic Zip Torq™ clamps



011748



011754

ALUMINUM

- 24 gauge aluminum
- Removable ¼" x ¼" screen
- Back draft flapper
- Available with 4" collar and flush

Material	Diameter	Part #	Qty	Package	Opening	UPC
Galvanized	4"	011755	1	Ind. Box	flush	•
		011756	1	Ind. Box	with collar	•
	no screen	012120	1	Ind. Box	flush	•
		012121	1	Ind. Box	with collar	•
6"	011793	1	Ind. Box	flush	•	
	011794	1	Ind. Box	with collar	•	
	6-8" (3¼" x 10")	011772	1	Ind. Box	flush	•
	7"	011773	1	Ind. Box	flush	•
	011868	1	Ind. Box	with collar	•	
	10"	011774	1	Ind. Box	flush	•
Black	4"	012635	1	Ind. Box	with collar	•
		012636	1	Ind. Box	flush	•
		012646	1	Disp. Box	flush	•
		012642	1	Ind. Box	flush	•
		012643	1	Ind. Box	with collar	•
	6"	012633	1	Ind. Box	with collar	•
	7"	012639	1	Ind. Box	with collar	•
	6-8" (3¼" x 10")	012634	1	Ind. Box	flush	•
Black Kit	4"	012640	1	Disp. Box	with collar	•
Aluminum	4"	011748	1	Ind. Box	flush	•
		011749	1	Ind. Box	with collar	•
	no screen	011751	1	Ind. Box	flush	•
	no screen	011746	1	Ind. Box	with collar	•
	6"	011795	1	Ind. Box	flush	•
		011796	1	Ind. Box	with collar	•
	6-8" (3¼" x 10")	011754	1	Ind. Box	flush	•
	7"	011747	1	Ind. Box	flush	•
	011753	1	Ind. Box	with collar	•	

UMBRELLA CAP™

- Rigid ribbed construction
- Economical protection from rain and snow for flues and vent pipes
- Galvanized steel construction



Diameter	Cap diameter	Part #	UPC
3"	8"	010957	•
4"	8"	010958	•
5"	12"	010959	•
6"	12"	010960	•
7"	12"	010961	•
8"	12"	010962	•
9"	17"	010963	•
10"	17"	010964	•
12"	17"	010965	•

CREATIVE CROWN VENT CAP

- Designed to effectively evacuate fumes from flues or pipes
- Eliminates downdrafts
- May also be used as a storm-proof air intake or exhaust
- Galvanized steel construction for corrosion resistance
- Riveted assembly for long life



Diameter	Head diameter	Height	Part #	UPC
3"	7.63"	7"	010921	•
4"	7.63"	7"	010922	•
5"	9"	7.5"	010923	•
6"	10.5"	9"	010924	•
7"	12.25"	10.5"	010925	•
8"	14.13"	11.25"	010926	•
9"	16.5"	11.5"	010927	•
10"	18.5"	12.5"	010928	•
12"	22.5"	14.5"	010929	•

BROAD BAND SIPHON VENTILATOR™

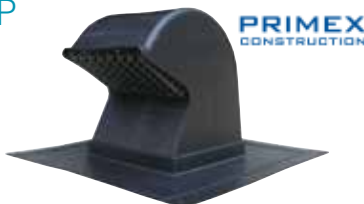
- Large unrestricted outlet
- Storm proof – prevents downdrafts
- Ribbed cap and wide band provide maximum protection from the weather and create a strong siphoning action
- Rugged galvanized steel to guard against rust



Collar	5mph wind	Overall	Height	Part #	UPC
3"	2500	11"	6"	010939	•
4"	3000	11"	6"	010940	•
5"	3500	15"	7.5"	010941	•
6"	4000	15"	7.5"	010942	•
7"	5200	15"	7.5"	010943	•
8"	6500	15"	7.5"	010944	•
9"	7500	20"	10"	010945	•
10"	8400	20"	10"	010946	•
12"	9600	20"	10"	010947	•

PLASTIC GOOSENECK ROOF CAP

- UV protected polymer resin
- One piece, seamless construction
- Removable screen
- Removable backdraft damper
- ½" x ½" molded grid
- 4" thru 8" snap-in adapters available separately
- 26.5 square inches mouth opening



Diameter	Part #	Qty
Black roof cap only:		
4" - 8"	111786	5

ROOF CAP ADAPTER

- Snap fits with Plastic Gooseneck (above) & Heavy Duty Low Profile (below)
- Also for use with Premium Eave Vent on Page 21



Diameter	Part #	Qty
Black Adapters:		
4"	111787	8
5"	111788	8
6"	111789	8
7"	111790	6
8"	111791	6

HEAVY DUTY LOW PROFILE ROOF CAP

- UV protected polymer resin
- One piece, seamless construction
- Removable screen
- Removable backdraft damper
- ½" x ½" molded grid
- 4" thru 8" snap-in adapters available sep
- 27.8 square inch mouth opening



Diameter	Part #	Qty
Black roof cap only:		
4" - 8"	111797	6

LOW PROFILE ROOF VENT

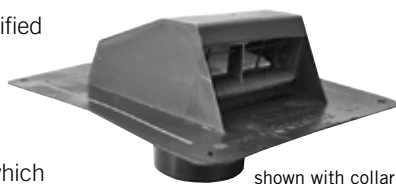
- 20 sq. inches of "free area"
- One piece molded hood maximizes protection from leaks
- Fixed screen
- Removable damper
- UV protected polymer resin
- 6.5" x 6.88" x 4.88"



Diameter	Part #	Qty	Opening
4" - 5" - 6"	111866	10	collar

PLASTIC ROOF CAP EXHAUST

- Heavy duty black plastic (polypropylene), modified for impact and UV resistance
- Flexible flange
- Molded screen
- Unique chatterless flapper
- Available flush mount or with a 3" long collar which adapts to 4" & 5" pipe
- Exhausts dryer vents or bathroom fan vents thru the roof.
- Bathroom Vent Kit 011885 includes 4" with collar, 8ft foil, increaser reducer and clamps

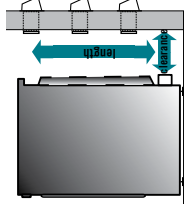


Diameter	Part #	Qty	Opening	UPC
Dryer Vent:				
4" - 5"	111250	6	collar	
up to 5"	111507	4	flush	
Bathroom Vent:				
4" - 5"	111508	6	collar	
up to 5"	111509	4	flush	
Bathroom Vent Kit:				
4" - 5"	011885	1	collar	•

Dryer Vent Hook-up Guide



201 Broiles Drive
Jacksonville, TX 75766
Tel: 903-586-8283
Fax: 800-259-8368
www.buildersbest.com



Clearance
Measure the distance behind the dryer to the wall to determine clearance of transition venting. The clearance is usually the most restrictive of the measurements. This is the area where the venting is most likely to be crushed.

Length
Measure the distance between the dryer and wall vents for the length of venting needed. Flexible aluminum will stretch for long runs. Rigid aluminum periscope come in telescoping sizes.

90° Elbows save space behind the dryer and protect airflow at critical turns

Builder's Best® carries the most complete line of all metal UL® Listed dryer venting products. The goal of dryer venting is to expel hot air and lint to the outside. Crushed venting will not accomplish this goal, and will contribute to premature deterioration of the appliance.

All metal dryer venting is recommended by: clothes dryer manufacturers, Consumer Products Safety Commission, Energy Star, Chimney Safety Institute of America, US Fire Administration, National Fire Protection Association, Department of Energy, state and local building codes, the Fire Safety Council, and for over 20 years, **Builder's Best, Inc.**

Snap-Lock™ Fittings do not require clamps between parts. Slotted fittings fit over standard 4" parts. Crimped fittings fit into standard 4" parts.

Through wall vent hoods form the end of the dryer venting run. Verify that the airflow is moving through the system by checking that the lint and air is being expelled to the outside at the hood.



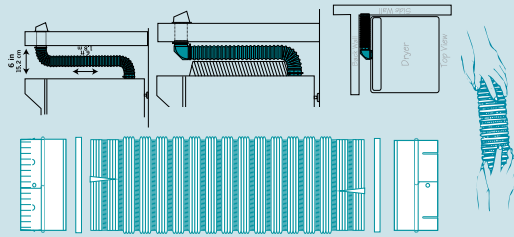
BB PDP #90217 buildersbest hookup guide 2/1/20

PIPE	ELBOWS	PERISCOPES	KITS	HOSE	HOODS
6" Clearance 	4" Clearance 	2" Clearance 	4" Clearance 	6" Clearance 	Exterior
4" Diameter 5', 6' and 8' lengths	Rigid aluminum protects airflow at 90° turns	0-5 & 0-18 18-29 & 29-50 Telescoping sections adjust to length needed	May include flexible pipe, elbows, periscopes, hoods and/or hoses	Maximum 8ft allowed by UL®.	n/a
90° turns with pipe take 6" Clearance and 1 foot of length	Elbows make tighter 90° turns	Closest clearance which maintains proper airflow. Angled ends enhance airflow	Excellent airflow and easiest installation	Crushes easily at 90° turns	n/a
UL® available	UL® available	UL® available	UL® available	UL® available	Flappers and louvers provide more protection against pests.
Meets specs	Meets specs	Meets specs	Meets specs	Hoses may invalidate warranties	Screens on hoods can trap lint and need to be checked frequently.
Pretreated ends save time	Swivel collars aid in moving the dryer with- out disconnecting the venting	Swivel collars aid directional airflow	All in one solutions		
Secure standard (non-Snap-Lock™) connections with clamps	Secure standard (non-Snap-Lock™) connections with clamps	Secure standard (non-Snap-Lock™) connections with clamps	Secure standard (non-Snap-Lock™) connections with clamps	Poor venting is one of the most common causes of dryer fires and maintenance calls	Low profile or wide mouth. Plastic, aluminum or galvanized.

Proper dryer venting can be a very inexpensive way to increase the energy efficiency of a home. Reduced airflow and the resulting lint buildup cause overheating by preventing fast and proper drying cycles. Proper venting can decrease the amount of lint and increase operating costs. Helping consumers increase the longevity of their appliances and making their investments last longer is always important.

PIPE

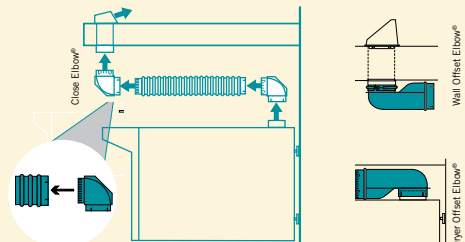
Pre-treated ends save time and provide secure connections. Thicker pipe means less damage and better airflow.



- Slotted fittings go over, crimped fittings go into.
- These fittings snap together, so that clamps are not required. You will need clamps at the dryer and wall.
- Without snap-lock™ fittings, you may need to flatten the pipe at the ends to make the connection.

ELBOWS

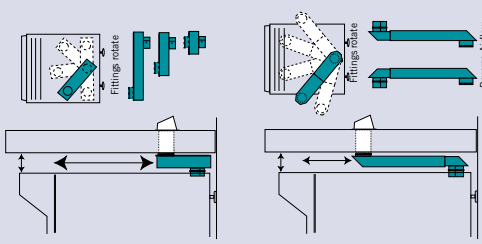
Snap or clamp to pipe for longer runs. Reduce space needed two to four inches over pipe alone. Protect airflow at critical 90° turns.



- Fittings swivel to allow pipe to move into position.
- Slotted fittings go over, crimped fittings go into. These snap together without clamps.
- Offset elbows® allow for protrusions from the dryer and the wall.

PERISCOPES

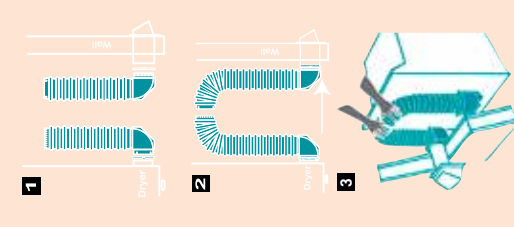
2" x 6" rigid aluminum. Draw band collar for dryer connection. Crimped fitting for wall. Reduce space needed without reducing airflow.



- Zero Periscopes™ handle overlapping dryer and wall pipes.
- 18-29" reaches the side of most dryers
- 29-50" reaches the top of most dryers.
- Same airflow as pipe and elbows.

KITS

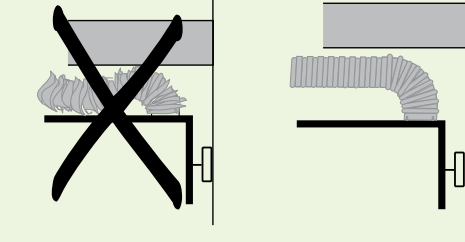
Over-The-Top® Loop system installations provide excellent airflow and are the easiest to install.



- Combinations of Snap-Lock™ Pipe and Close Elbows® make excellent airflow systems.
- This is the easiest system to install.
- Over-The-Top® features a 3 step installation.

HOSE

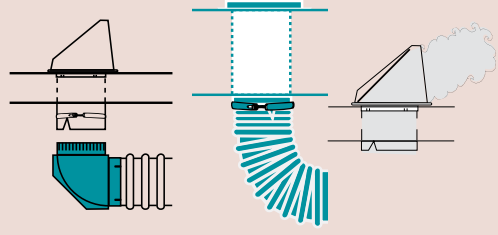
Foil duct is held together with layers of aluminum and polyester. This duct is easily crushed behind the dryer.



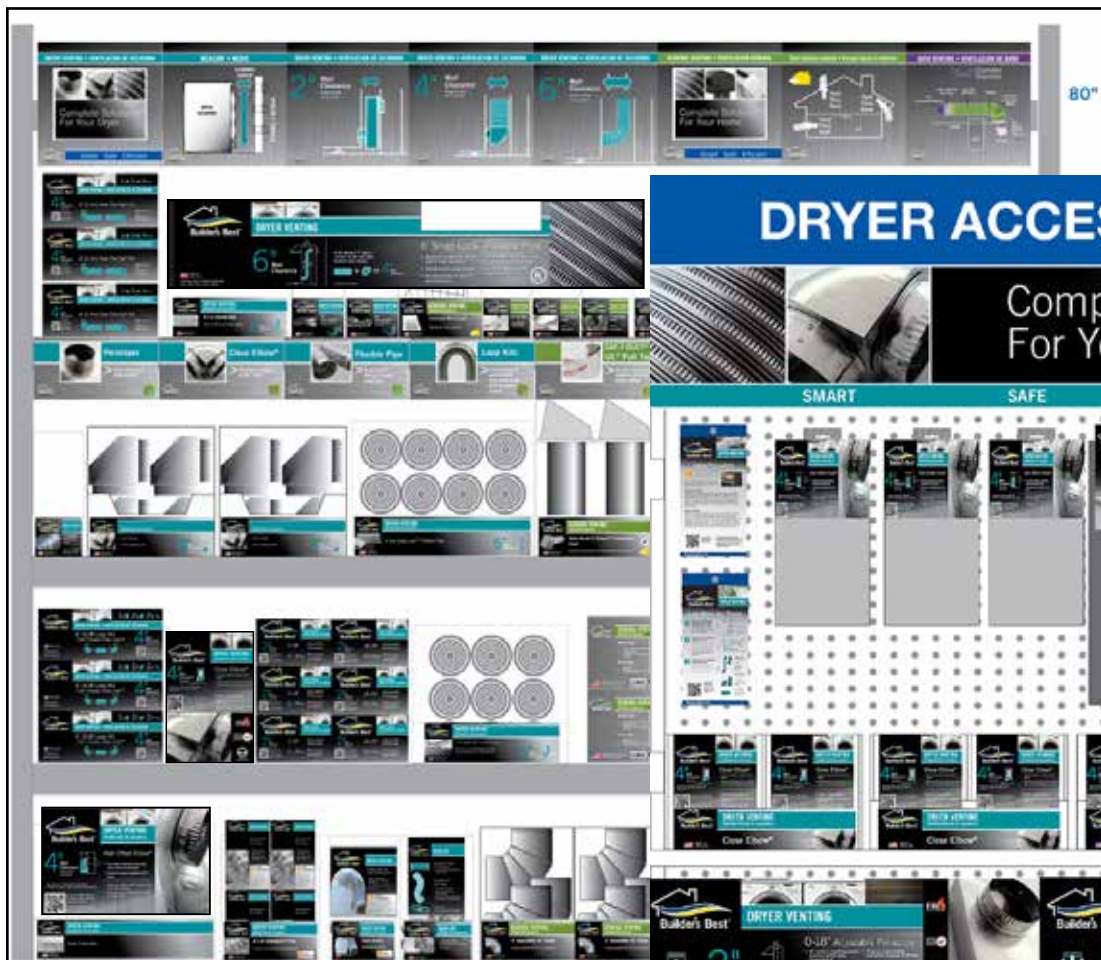
- Easy to install, easy to abuse.
- Invalidates most clothes dryer warranties.
- 6" clearance. Do not crush, kink or puncture accidentally.
- Check building codes and manufacturers instructions.

HOODS

The goal of dryer venting is to get the lint outside. Wide mouth is preferred for optimal airflow. Louvered hoods provide a low-profile alternative.

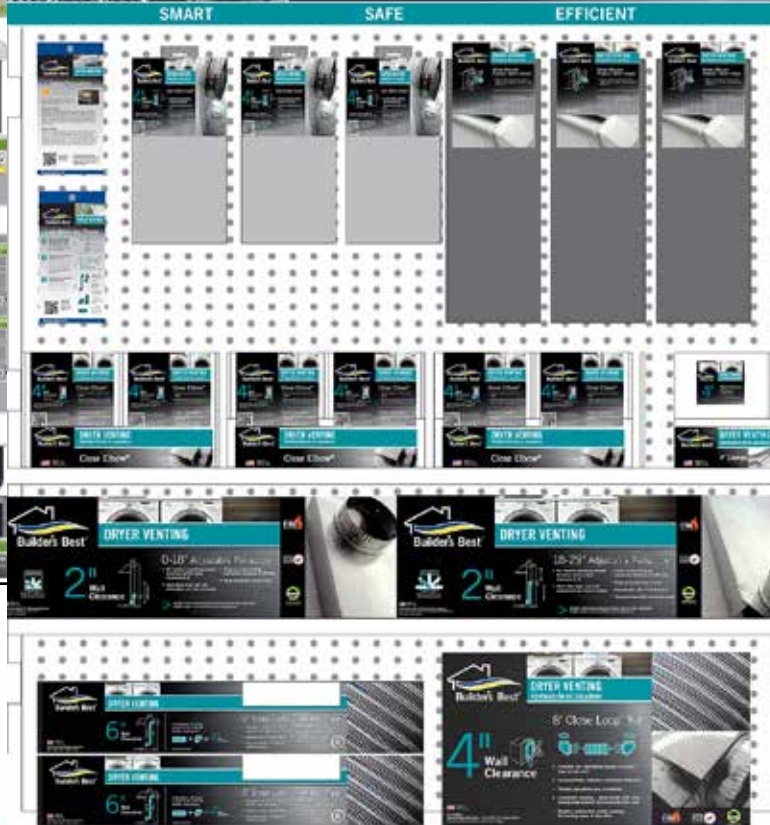


- Builder's Best® also carries heavy duty galvanized hoods which are paintable.
- It is a good idea to turn on the dryer and check the airflow to ensure installation is successful.



DRYER ACCESSORIES

Complete Solutions For Your Dryer



Builder's Best Look Before you Choose

- 1 Measure Clearance**
Measure from the back of the dryer to the wall.
- 2 Measure Distance**
Measure from the dryer outlet to the wall outlet. This is the length of run.
- 3 Match solution**
2" Periscopes
4" Close Elbow® & Pipe
6" Pipe



Builder's Best Safety precautions

Crushed venting is one of the most common causes of dryer fires and maintenance calls.

Vinyl and foil venting material easily collapse and burn in the event of a fire.

Reduced Airflow
Reduced airflow and the resulting lint build-up cause overheating by preventing fast enough drying action.

When this happens, the high temperature limit safety switch has to cycle on and off to control the heater.

Builder's Best® Venting
Proper venting materials can decrease drying time and decrease operating costs by helping the dryer achieve maximum performance.

Builder's Best enhances the safety of your appliance with sturdy build quality that ensure optimum airflow.

FLAME RESISTANT ALL METAL CONSTRUCTION

ENHANCED DRYER EFFICIENCY AND COST SAVING

MEETS MANUFACTURER REQUIREMENTS

Builder's Best, Inc.
201 Brookes Drive • Jacksonville, TX 75766
1-800-VENT-SAFE • builderbest.com
©2014. Manufacturer's specifications apply.



Private label programs also available.

Part #	Pg	Part #	Pg	Part #	Pg	Part #	Pg	Part #	Pg	Part #	Pg	Part #	Pg	Part #	Pg	Part #	Pg	Part #	Pg	Part #	Pg	Part #	Pg	Part #	Pg
010016	24	011447	7	110090	24	110252	6	110435	7	110676	12	110851	19	111039	14	111167	15	111322	8	111585	7	111866	32		
010150	24	011450	6	110091	24	110253	6	110439	7	110677	12	110852	19	111040	14	111169	15	111323	8	111586	7	111867	21		
010151	26	011452	6	110092	24	110256	6	110443	7	110680	11	110853	19	111041	14	111171	15	111324	8	111587	7	111869	21		
010152	26	011454	5	110094	29	110257	6	110444	7	110681	20	110854	19	111047	14	111173	15	111325	8	111588	7	111870	21		
010153	28	011456	5	110095	27	110259	6	110445	7	110682	20	110855	19	111049	14	111175	15	111326	8	111641	15	111871	15		
010155	26	011458	7	110096	27	110260	6	110453	7	110683	20	110856	19	111050	14	111177	15	111327	8	111646	10	111872	15		
010158	28	011463	7	110103	24	110262	6	110454	7	110684	17	110857	19	111051	14	111179	15	111328	8	111661	8	111873	15		
010179	18	011465	7	110105	24	110263	6	110459	7	110690	4	110858	19	111052	14	111181	15	111329	8	111662	8	111896	21		
010186	10	011466	7	110107	24	110264	6	110460	6	110691	4	110859	19	111053	14	111183	15	111330	8	111663	8	111898	21		
010187	10	011468	7	110108	26	110266	6	110480	22	110692	4	110860	19	111056	14	111185	15	111331	8	111664	8	111900	21		
010203	11	011469	7	110109	26	110267	6	110482	22	110693	4	110861	19	111058	14	111187	15	111332	8	111665	8	111906	22		
010204	11	011471	7	110110	26	110268	6	110484	22	110694	20	110862	23	111060	14	111189	15	111333	8	111666	8	111908	22		
010205	11	011473	7	110111	13	110269	6	110486	22	110695	20	110863	23	111062	14	111191	15	111334	9	111667	8	111909	18		
010206	11	011474	7	110112	13	110270	17	110487	13	110696	30	110864	23	111063	14	111193	15	111336	9	111668	8	111911	22		
010207	11	011475	7	110113	18	110271	17	110490	23	110697	30	110865	23	111064	14	111195	15	111338	9	111669	8	111918	20		
010208	11	011476	6	110114	28	110272	20	110491	23	110698	30	110866	23	111065	14	111197	15	111339	9	111670	8	111920	26		
010210	11	011479	6	110116	28	110273	20	110492	23	110699	16	110867	23	111066	14	111199	15	111340	9	111671	8	111922	26		
010241	11	011482	6	110117	28	110274	20	110493	23	110729	16	110868	29	111068	14	111201	15	111341	9	111672	8	111926	26		
010242	11	011487	6	110119	18	110275	20	110494	23	110732	16	110869	29	111070	14	111203	15	111345	9	111673	8	111941	21		
010346	4	011489	6	110120	24	110276	17	110495	23	110744	4	110872	19	111071	14	111205	15	111347	9	111674	8	111942	21		
010349	4	011491	6	110122	23	110277	17	110496	11	110745	4	110883	16	111072	14	111207	15	111349	9	111678	9	112100	27		
010352	4	011493	6	110126	23	110278	17	110497	11	110749	19	110885	16	111073	14	111209	15	111350	9	111680	9	112101	27		
010353	4	011501	5	110127	27	110279	17	110504	12	110750	16	110887	16	111076	14	111211	15	111351	9	111682	9	112124	11		
010354	4	011502	5	110128	28	110280	19	110505	12	110751	20	110889	16	111078	14	111213	15	111352	9	111683	9	112126	11		
010355	4	011746	31	110129	24	110281	19	110509	13	110752	20	110891	16	111080	14	111215	15	111356	5	111684	9	112127	11		
010356	4	011747	31	110130	24	110282	19	110518	30	110753	13	110893	20	111081	14	111217	15	111357	5	111685	9				
010357	4	011748	31	110131	24	110283	19	110519	20	110754	20	110894	20	111082	14	111219	15	111358	5	111689	23				
010358	4	011749	31	110133	28	110284	18	110533	11	110755	4	110895	20	111083	14	111221	15	111365	18	111690	23				
010431	7	011751	31	110137	23	110285	18	110536	27	110759	4	110896	20	111084	14	111223	15	111368	18	111691	23				
010507	12	011753	31	110138	24	110286	19	110543	10	110760	4	110897	20	111089	14	111225	15	111373	18	111692	19				
010508	12	011754	31	110139	29	110287	19	110544	10	110761	4	110898	20	111091	14	111227	15	111374	18	111693	26				
010558	13	011755	31	110140	29	110288	19	110545	26	110762	4	110899	20	111093	14	111229	15	111375	18	111700	26				
010559	13	011756	31	110141	28	110290	23	110546	26	110763	4	110900	20	111094	14	111231	15	111376	18	111704	25				
010723	18	011772	31	110142	28	110291	19	110548	26	110764	4	110901	20	111095	14	111233	15	111377	15	111705	18				
010724	18	011773	31	110144	28	110292	19	110555	20	110766	18	110902	20	111096	14	111235	15	111378	18	111706	16				
010743	13	011774	31	110146	28	110294	19	110556	20	110767	18	110903	20	111097	14	111237	15	111381	18	111712	18				
010768	18	011793	31	110148	28	110315	6	110557	17	110770	16	110904	20	111099	14	111239	15	111384	18	111713	18				
010769	18	011794	31	110149	28	110317	6	110562	13	110771	16	110905	20	111101	14	111241	15	111387	15	111714	18				
010793	12	011795	31	110160	24	110319	6	110563	13	110775	16	110906	20	111102	14	111243	18	111391	18	111715	18				
010921	31	011796	31	110161	26	110320	6	110564	13	110786	17	110907	20	111103	14	111249	20	111392	18	111716	18				
010922	31	011868	31	110162	26	110322	6	110565	13	110791	17	110908	20	111104	14	111250	32	111396	30	111717	7				
010923	31	011885	32	110164	18	110323	6	110566	13	110801	4	110909	20	111107	14	111251	20	111405	27	111718	26				
010924	31	012129	11	110165	26	110326	17	110567	13	110802	4	110911	20	111109	14	111253	5	111406	12	111732	18				
010925	31	012633	31	110166	29	110328	17	110568	13	110803	4	110912	20	111111	14	111254	5	111407	12	111733	18				
010926	31	012634	31	110170	17	110330	18	110569	13	110804	4	110913	20	111112	14	111255	5	111408	12	111734	19				
010927	31	012635	31	110171	27	110332	18	110584	7	110805	4	110914	20	111113	14	111256	5	111411	18	111752	17				
010928	31	012636	31	110172	28	110334	19	110585	7	110806	4	110915	20	111114	14	111257	5	111412	19	111775	17				
010929	31	012639	31	110173	28	110336	19	110592	26	110807	4	110916	20	111115	14	111258	5	111414	19	111776	17				
010939	32	012640	31	110174	28	110338	19	110597	11	110808	4	110917	20	111117	14	111259	5	111417	22	111777	17				
010940	32	012645	31	110175	28	110340	19	110603	11	110809	4	111000	30	111119	14	111260	5	111419	16	111778	17				
010941	32	012646	31	110177	18	110342	19	110609	11	110810	4	111001	30	111121	14	111261	5	111423	22	111781	17				
010942	32	100017	13	110180	24	110344	4	110610	11	110811	20	111002	10	111122	14	111262	5	111424	19	111782	17				
010943	32	110003	19	110181	10	110345	4	110611	11	110812	20	111003	19	111123	14	111263	5	111430	16	111783	17				
010944	32	110004	19	110182	10	110347	4	110612	11	110813	20	111004	19	111124	14	111264	5	111503	20	111784	17				
010945	32	110043	26	110184	10	110348	4	110618	11	110825	11	111005	20	111125	14	111265	5	111504	12	111786	32				
010946	32	1																							

Builder's Best, Inc.
201 Broiles Drive
Jacksonville TX 75766

Email:
sales@venting.biz

Phone:
1-8-U VENT SAFE (1-888-368-7233)
or 903-586-8283

Fax:
1-800-259-VENT (1-800-259-8368)
or 903-586-9370

www.BuildersBest.com

The All Metal Solution to Dryer Venting™
E-Z-Fasten™ Readi-Pipe™ Econo-Pipe™
Metalflex™ Pro-Vent™ and ZipTorq™ are
trademarks of Builder's Best, Inc.
Over-The-Top® Builder's Best® SAF-T-DUCT®
Nemco® and the Builder's Best Logo are
registered trademarks of Builder's Best, Inc.

Builder's Best, Inc. parts are covered by U.S. Patents:
5,121,948; 5,133,579; 5,145,217; 5,158,328;
5,498,204; 5,653,631; 5,819,435; 5,943,743;
6,035,495; 6,370,794; 6,390,510; D.335,174;
D.342,130; D.342,782;
Canadian patents 2,062,123; 2,063,098; 2,201,956;
2,279,599; 2,299,989; 2,317,863;
Builder's Best, Inc.; © and/or patents pending.