

## Display board instruction

1. After powering on the display board, it will light for 2 seconds.
2. If there is communicating error between display board and indoor unit, "--" will flash in display board.
3. Press the "TURBO" key 10 times in a row on the remote control to make the AC enter the network configuration state, "AP" will be shown. If the configuration is successful, "AP" will disappear. If configuration is failed, "AP" will last 2 minutes and then disappear. When the AC is in configuration state, it will show "AP".

4. WiFi icon in panel shows different states of WiFi connections.

1) OFF: there is communication error between WiFi module and display board chip.

2) Flash slowly for 1 minute and then OFF: the WiFi module is never configurate before, or WiFi module is connected to LAN.

3) ON: WiFi module is connected to Internet.

4) Flah quickly (400ms a cycle): WiFi module is in configuration state.

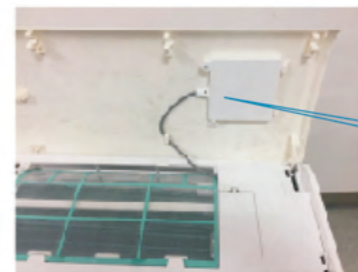
If close the display, the WiFi icon will not display.

## WiFi module Installation

1. Make sure the power supply of the whole machine is cut off before installation, and prepare WIFI module and cross-headed screwdriver in advance.



2. Open the panel of the indoor unit, and unscrew the screws of the display board.



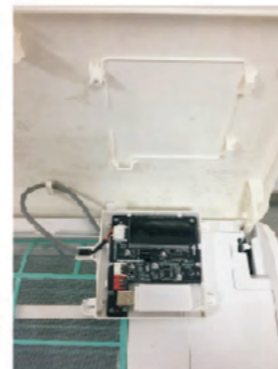
display lamp board

3. Remove the light board.

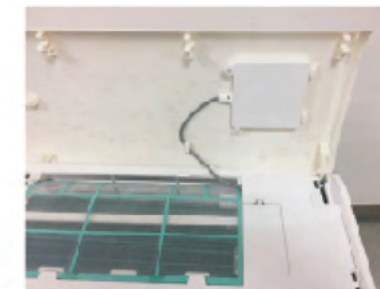


USB port

4. Insert the WIFI module into the USB port, the WIFI module must be inserted well, otherwise it will be in poor contact, may affect the normal use.

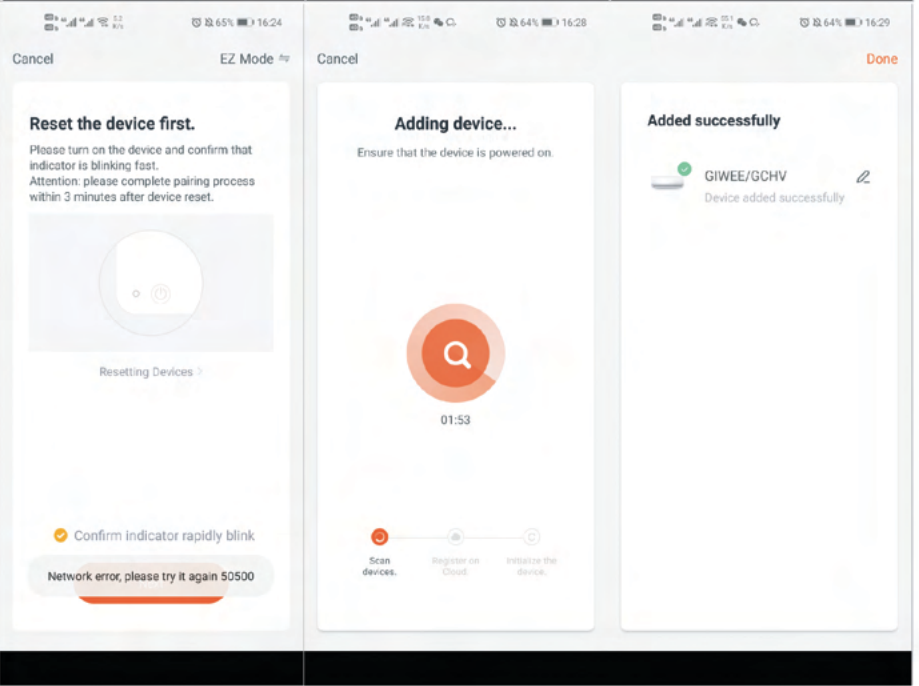
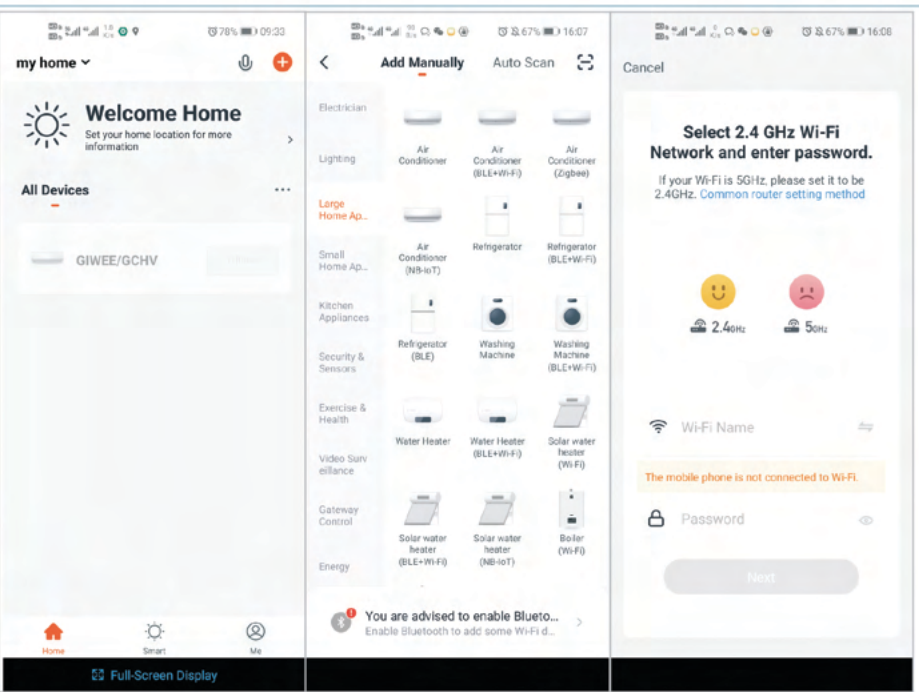


5. Install the display board back to its original position. Close the panel.



## Configuration

- a) Go to the Apple App Store or Google Play Store depending on your smartphone's operating system.
  - b) Search for the **Tuya smart**.
  - c) Download and install the app.
  - d) Make sure the unit is in "configuration state".
  - e) Open the TUYA app, press the "add device" → "add manually" → "air conditioner" (screenshots available on the following pages).
  - f) Input the WIFI name and password to connect with your unit;
- Note: Wifi app can only use a 2.4GHz Wifi network.**



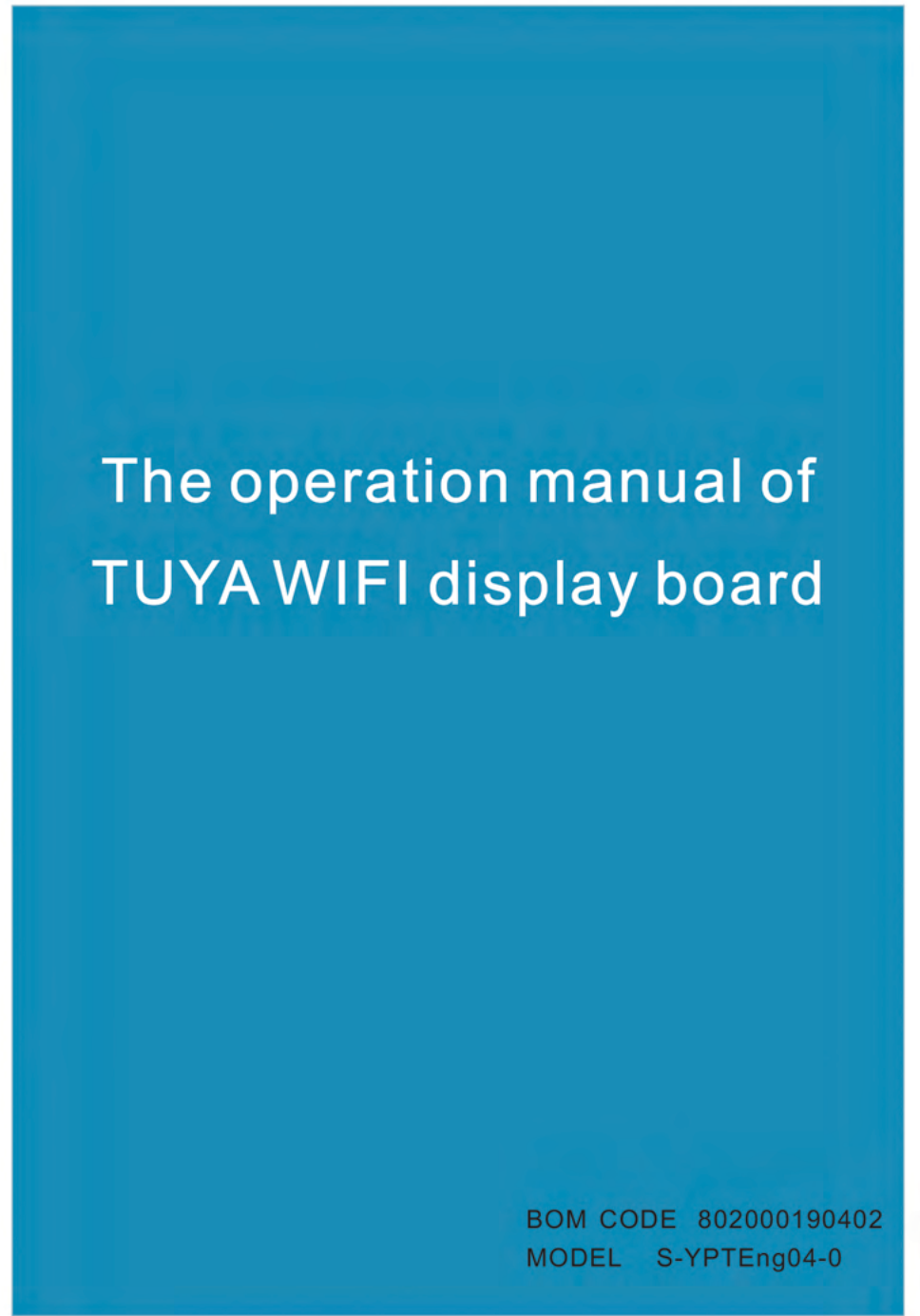
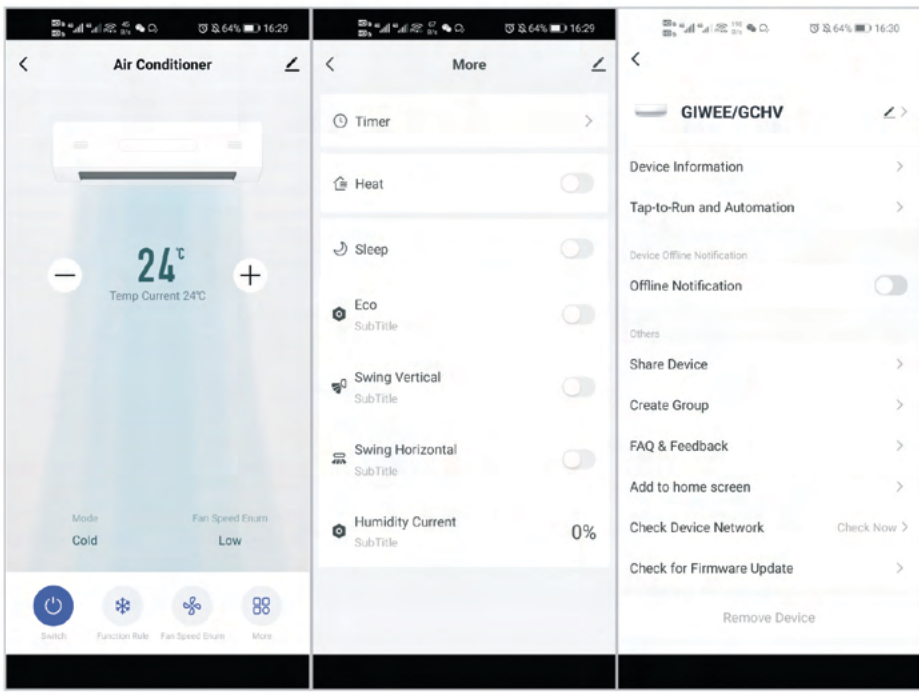
## Operation

After configuration success, it will go into the operation interface, you can control the unit via APP at this moment.

From this APP, you can turn on the unit, set the mode, fan speed, temp., swing, timer etc., and it can also display the mode, room ambient etc.

It can edit the unit's information via "edit" button.

Note: when choose the ECO mode, the "ECO" button will not change to "turn on", but the unit will run the ECO mode.



BOM CODE 802000190402  
MODEL S-YPTEng04-0