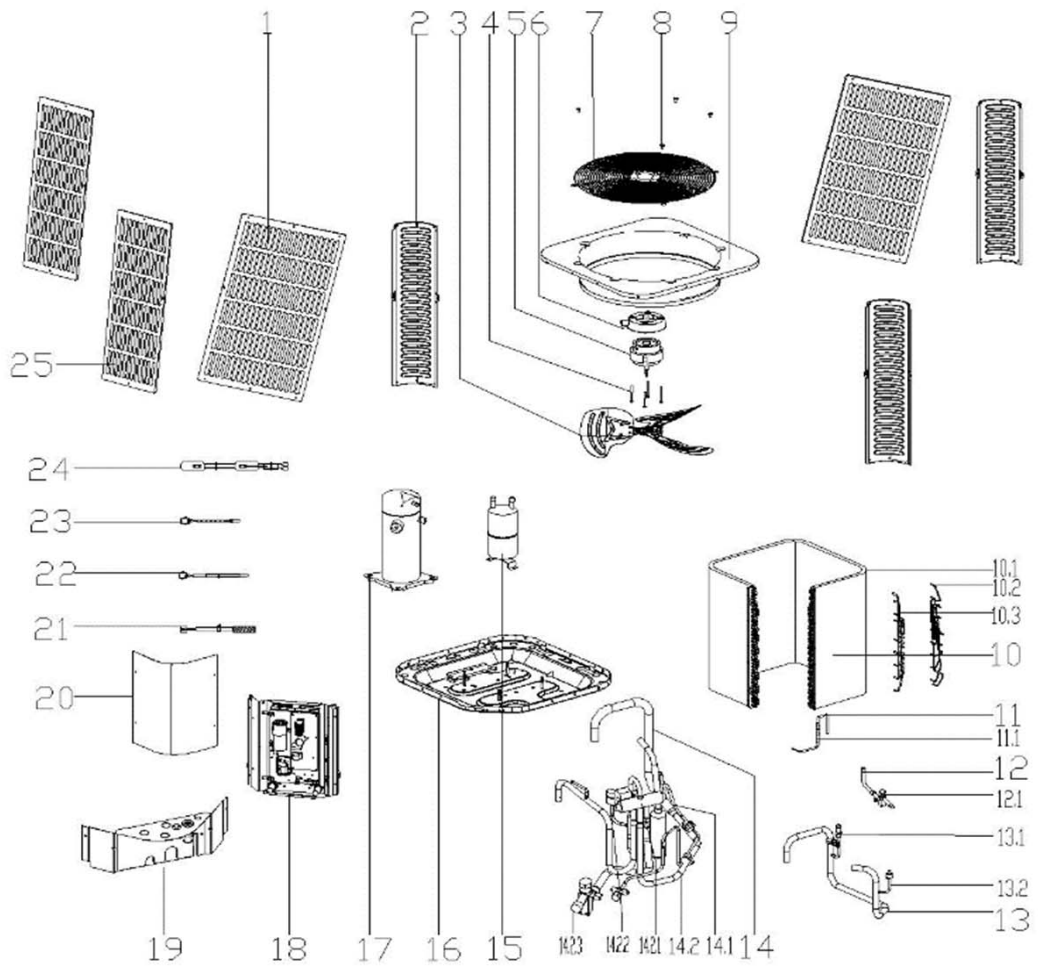


Exploded View

MOVA36HN1M152L





18.4

EX_ID	Spare Parts Code	Price	Part Name(EN)	Qty.
3	12200104000032	27	Fan,3 blade count,aluminum alloy galvanized,D 23inch,60DEG(60),1/2inch Shaft Bore,CW(along air flow direction)	1
4	11301805000012	1	Motor Mounting bolt	4
5	11002015015328	49	Brushless DC Motor	1
6	12123000000464	10	Motor installation board ass'y	1
7	12923000000028	28	Grille, top cover	1
8	11301002000001	1	Stainless steel bolts	8
9	12223000001097	34	Top cover assembly	1
10	15823000004429	294	Condenser ass'y	1
10.1	15823000004430	379	Condenser A	1
10.2	15123000010945	14	Condenser inlet pipe ass'y	1
10.3	15423000004597	18	Condenser outlet pipe ass'y	1
11	15423000004595	5	Throttle assembly	1
11.1	15500210000377	6	One-way throttle valve pipe	1
12	15423000003178	7	Stop valve ass'y	1
12.1	15500206000018	8	Block valve	1
13	15423000005733	#N/A	Suction pipe ass'y	1
13.1	15427000001439	13	Fusible plug assembly	1
13.2	17400516000149	5	Pressure switch	1
14	15423000005732	72	4-way valve ass'y	1
14.1	15123000013420	#N/A	Pipe joint ass'y	1
14.2	15423000005730	55	4-way valve assembly	1
14.2.1	15500216000091	16	4-way valve ass'y	1
14.2.2	17400516000032	6	Pressure switch	1
14.2.3	15500206000026	13	Block valve	1
15	15500508001115	19	Accumulator cylinder	1
16	12223000005895	34	Base assembly	1
17	11102010000410	298	Fixed Speed Scroll compressor	1
18	17223000008828	122	E-part box assembly	1
18.1	12223000015849	#N/A	Installation plate of electric parts subassembly	1
18.2	17123000A03565	84	Outdoor main control board assembly	1
18.3	17400103000150	5	Capacitor	1
18.4	11203502000032	15	AC contactor	1
21	17400513003814	2	Discharge Temperature switch	1
22	11201007000073	1	Room Temperature Sensor	1
23	11201007000136	1	Pipe Temperature Sensor	1
24	17402001000053	5	Compressor electric heater	1